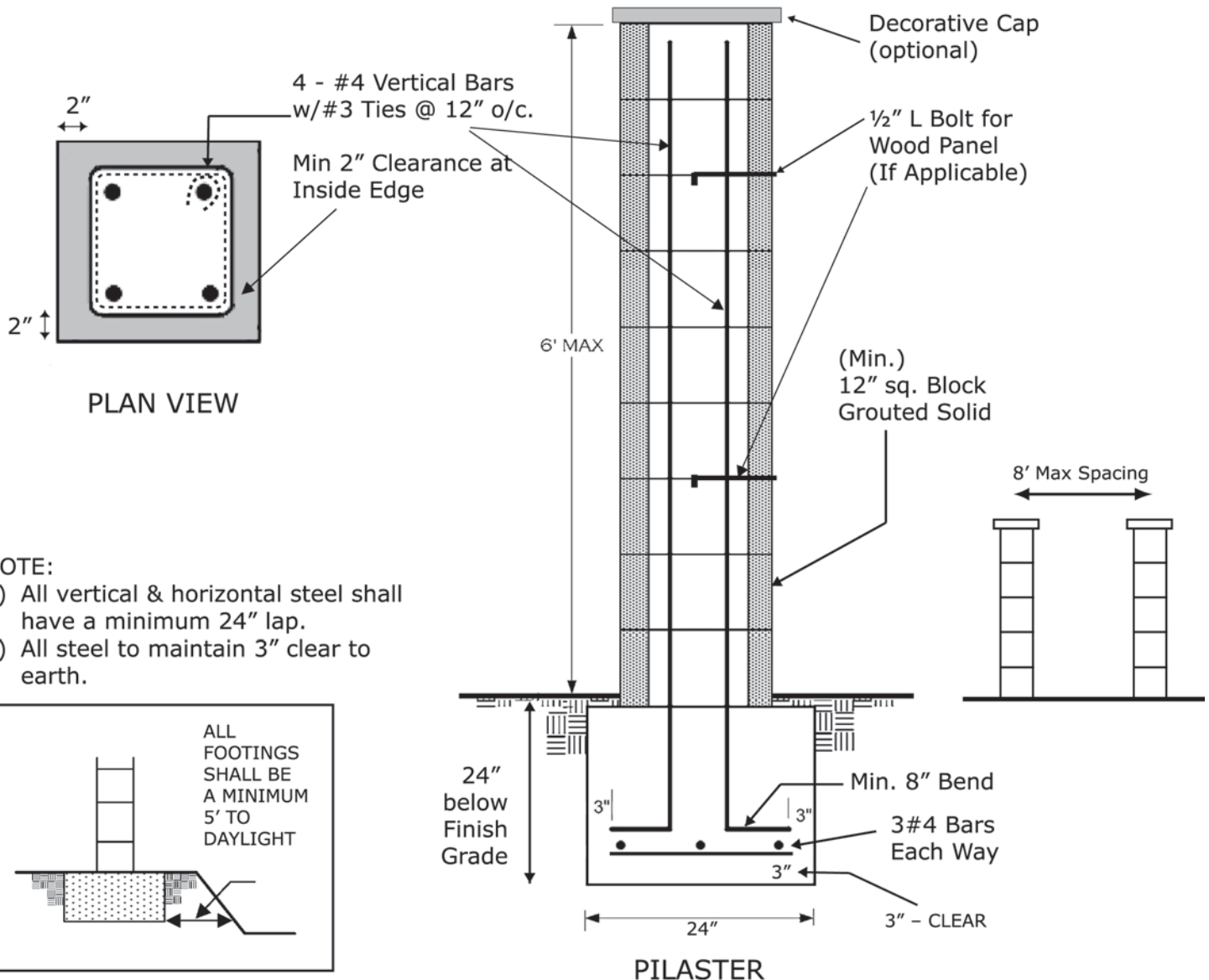
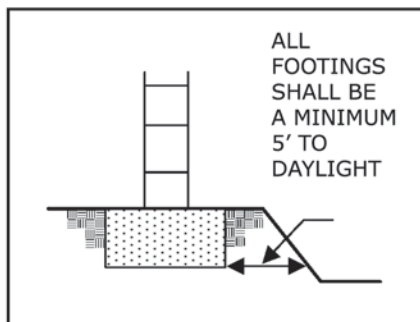


PILASTER STANDARD DETAIL



- NOTE:**
- 1) All vertical & horizontal steel shall have a minimum 24" lap.
 - 2) All steel to maintain 3" clear to earth.



All footings are to be placed against undisturbed soil.

1. Concrete in footing to be 2500 p.s.i. @ 28 days
2. Concrete block - Grade "N" units A.S.T.M. C-90
3. Grout - 1 part cement, 3 parts sand, 2 parts pea gravel
4. Mortar - 2 parts cement, 1 part lime putty, 9 parts sand
5. Reinforcing steel minimum grade 40

Inspection Procedures

- Inspection requests shall be made before 4:00 p.m. on the business day PRIOR to the desired date of inspection.
1. **FOUNDATION:** After trenches are dug, steel is tied in place and before any concrete placement.
 2. **PRE-GROUT:** After all concrete masonry units are laid up, grout stop, horizontal and vertical reinforcement is in place, and before placement of grout.
 3. **FINAL INSPECTION:** After grout placement but before cap is installed.