

# GARDEN GROVE *connections* FALL 2020



## GARDEN GROVE **HOUSING ELEMENT**



The City is updating components of the general plan that include Housing, Safety, and Land Use Elements, as well as creating an Environmental Justice Element.

Visit [ggcity.org/housing-element](https://ggcity.org/housing-element) for details and to receive emails on upcoming public workshops, meetings, and surveys.



# **HOUSING ELEMENT** *Community* **STARTS** WITH *Housing*

**HOUSING ELEMENT** identifies goals and strategies to meet the housing needs for all income levels, and for the production of safe, decent, and affordable housing.

**SAFETY ELEMENT** establishes policies that will minimize the risk of personal injury, loss of life, property damage, and environmental damage associated with natural and man-made hazards.

**LAND USE ELEMENT** reviews the uses of land for housing, businesses, industries, agriculture, open space, public facilities, and other categories.

**ENVIRONMENTAL JUSTICE ELEMENT (NEW)** will establish policies to reduce pollution, and to provide residents with access to healthy food, physical activity, and safe and sanitary homes.

## **PUBLIC PARTICIPATION IS ENCOURAGED.**

Upcoming public workshops, meetings, and surveys:

First Community Online Survey	Virtual Neighborhood and Homeowner Associations	Joint PC/NICC Meeting Study Session	Second Community Online Survey	Virtual Community Meeting	Planning Commission Study Session	City Council Study Session	City Council Public Hearing
Aug 31, 2020- Sept 25, 2020	Sept 3, 2020	Sept 17, 2020	Oct 19, 2020- Nov 5, 2020 (Tentative)	Nov 4, 2020	Nov 19, 2020	Nov 24, 2020	Dec 8, 2020

\*PC/NICC: Planning Commission/Neighborhood Improvement Conservation Commission  
Please visit [ggcity.org/housing-element](http://ggcity.org/housing-element) for details or contact the Planning Division at (714) 741-5312 or [planning@ggcity.org](mailto:planning@ggcity.org).

## ACCESSIBLE BUSINESSES

Garden Grove restaurants and other local establishments that include churches and gyms can apply for no-fee, 60-day temporary outdoor business permits to expand areas onto adjacent sidewalks or street parking, within a shopping center, or in privately-owned parking lots.

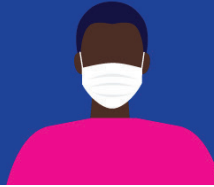
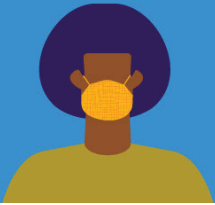
Online applications are available at [ggcity.org/businesses](http://ggcity.org/businesses) or by contacting the City's Planning Division at (714) 741-5312.







# Reduce the Spread of COVID-19 **WEAR A MASK**



## **CORONAVIRUS** COVID-19 UPDATES

Visit [ggcity.org/coronavirus](https://ggcity.org/coronavirus) for COVID-19 resources, testing sites, and updates. Download the City's mobile app, available on iOS and Android devices to receive instant notifications.



Garden Grove's Community Emergency Response Team (CERT) was recently sworn-in to help residents and businesses when the need arises.

To find out how you can be trained to become a CERT volunteer, visit [ggcity.org/cert](https://ggcity.org/cert).







# BLACK FRIDAY - GOES - BiGG

**Buy in Garden Grove and win during Black Friday Goes BiGG!**  
**Now, more than ever, local businesses need your support.**

- Delivery/Take Out - Local restaurants are still open. Order your favorite dish for delivery or take-out.
- Gift Cards/Certificates - Support your favorite small businesses by buying gift cards/certificates.
- Shop locally first, whether it's for gas or groceries.

Visit [ggcity.org/bigg](http://ggcity.org/bigg) or [gardengrovechamber.com](http://gardengrovechamber.com) for special offers and how to win BiGG!



## BiGG Vehicle Rebate Program

Garden Grove residents and businesses purchasing a new vehicle from one of the six franchised local auto dealers are eligible to receive a \$500 rebate with proof of Garden Grove residency or business address. Visit [ggcity.org/bigg/vrp](http://ggcity.org/bigg/vrp) for more information.



11222 Acacia Parkway  
Garden Grove, CA 92840  
(714) 741-5000 • [ggcity.org](http://ggcity.org)