

GARDEN GROVE NEW ENVIRONMENTAL JUSTICE ELEMENT



The City of Garden Grove is adopting a new Environmental Justice Element to the Garden Grove General Plan to minimize and equalize the effect of environmental hazards among all residents regardless of race and income level.

WHAT IS THE ENVIRONMENTAL JUSTICE ELEMENT?

The California Government Code (Section 65040.12) defines Environmental Justice Element as: “The fair treatment and meaningful participation of people of all races, cultures, and incomes with respect to the development, adoption, implementation, and enforcement of environmental laws, regulations, and policies.”

The new Environmental Justice Element will minimize pollution and its effects for all communities and ensure that residents have a say in decisions that affect their quality of life.

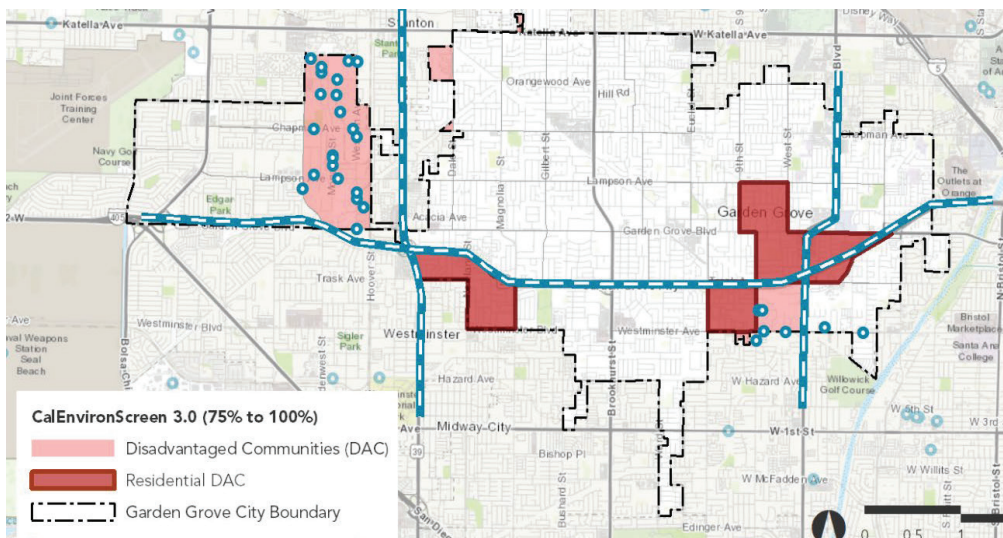
SEVEN PRIMARY OBJECTIVES OF THE ENVIRONMENTAL JUSTICE ELEMENT

- Identify objectives and policies to reduce health risks in disadvantaged communities
- Reduce pollution exposure
- Improve air quality
- Promote public facilities
- Promote food access
- Promote safe and sanitary homes
- Promote physical activity

DISADVANTAGED COMMUNITIES

Garden Grove has nine census tracts identified as disadvantaged communities. These communities are disproportionately affected by environmental pollution in the air, soil, or water from industrial businesses and traffic releasing toxic chemicals. The resulting health conditions include a higher percentage of cardiovascular disease, low birth weight in infants, and asthma.

These communities also have concentrations of people that experience low income, high unemployment, low levels of homeownership, high-rent burden, and/or low levels of educational attainment.



To view the disadvantaged communities identified by CalEnviroScreen 3.0, visit ggcity.org/housing-element.

WHY IS THE CITY ADOPTING A NEW ENVIRONMENTAL JUSTICE ELEMENT?

In September 2016, the State Legislature passed Senate Bill 1000, which requires cities and counties with disadvantaged communities to incorporate environmental justice policies into the general plan when adopting or revising two or more elements concurrently, on or after January 1, 2018. The City is in the process of updating both the Housing Element and the Safety Element, which requires the City to adopt a new Environmental Justice Element.

WHY IS IT IMPORTANT TO ADOPT A NEW ENVIRONMENTAL JUSTICE ELEMENT?

- Ensures that all people, regardless of race, ethnicity, or income, have equal protection from environmental hazards where they live, work, and play.
- Allows all people to have the equal ability to participate in, and influence, the decision-making process regarding environmental regulations.

HOW CAN YOU PARTICIPATE IN THE ADOPTION OF THE NEW ENVIRONMENTAL JUSTICE ELEMENT?

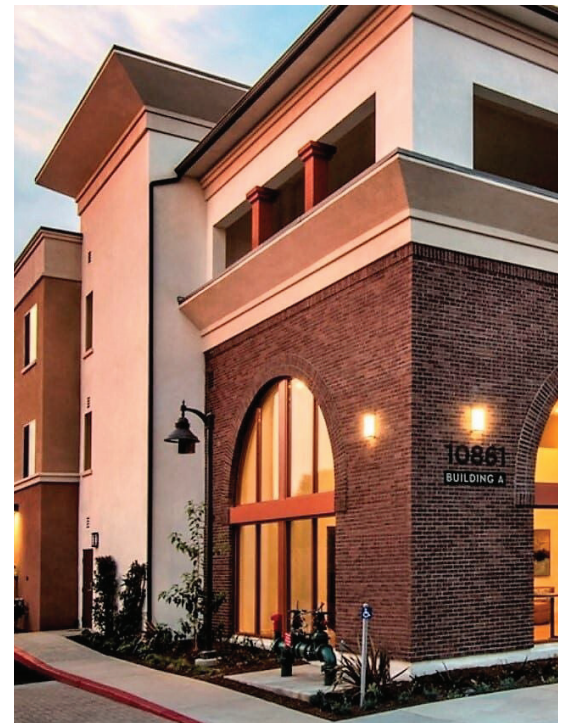
The success of the Housing Element update and the adoption of a new Environmental Justice Element requires extensive community engagement and input. There will be multiple opportunities to participate throughout the planning process:

- Join the email list at ggcity.org/housing-element
- Join meetings (see schedule below)
- Complete a community survey

To prevent the spread of COVID-19 and stay consistent with the state and county stay-at-home orders, the City is exploring various options for engaging the community safely.

Below are meeting and survey dates.

Please visit ggcity.org/housing-element for more details and meeting times.



First Community Online Survey	Virtual Neighborhood and Homeowner Associations	Joint PC/NICC Meeting Study Session	Second Community Online Survey	Virtual Community Meeting	Planning Commission Study Session	City Council Study Session	City Council Public Hearing
Aug 31, 2020- Sept 25, 2020	Sept 3, 2020	Sept 17, 2020	Oct 19, 2020- Nov 5, 2020 (Tentative)	Nov 4, 2020	Nov 19, 2020	Nov 24, 2020	Dec 8, 2020

*PC/NICC: Planning Commission/Neighborhood Improvement Conservation Commission

Please visit ggcity.org/housing-element for details or contact the Planning Division at (714) 741-5312 or planning@ggcity.org.



(714) 741-5000 | 11222 Acacia Parkway, Garden Grove, CA 92840