



City of Garden Grove

HOUSING, ENVIRONMENTAL JUSTICE, AND SAFETY ELEMENTS

Community Workshop April 21, 2021

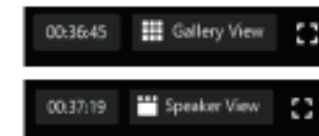


Agenda

- Introductions and Welcome
- What is a General Plan?
- Environmental Justice
- Community Needs
- Next Steps
- Public Input

How to Use Zoom Video Conferencing

Black menu bar at top or bottom of screen:



Audio

Please mute yourself when not speaking

Video

Participants

- See Others
- Rename Yourself (Name & Group/Agency Affiliation if applicable)
- Raise Hand (remember to lower after)

Chat Feature

Questions can be chatted at any time

View

Gallery/Speaker View of videos and screen share can be changed in top right corner

Meeting Guidelines

- One person speaks at a time. Keep comments brief.
- Technology happens – please be flexible and patient.
- Respect others' opinions.
- Please mute yourself when you're not speaking.
- Share video so we can stay visually connected.
- Remember: This is just one meeting in a longer process.



City of Garden Grove

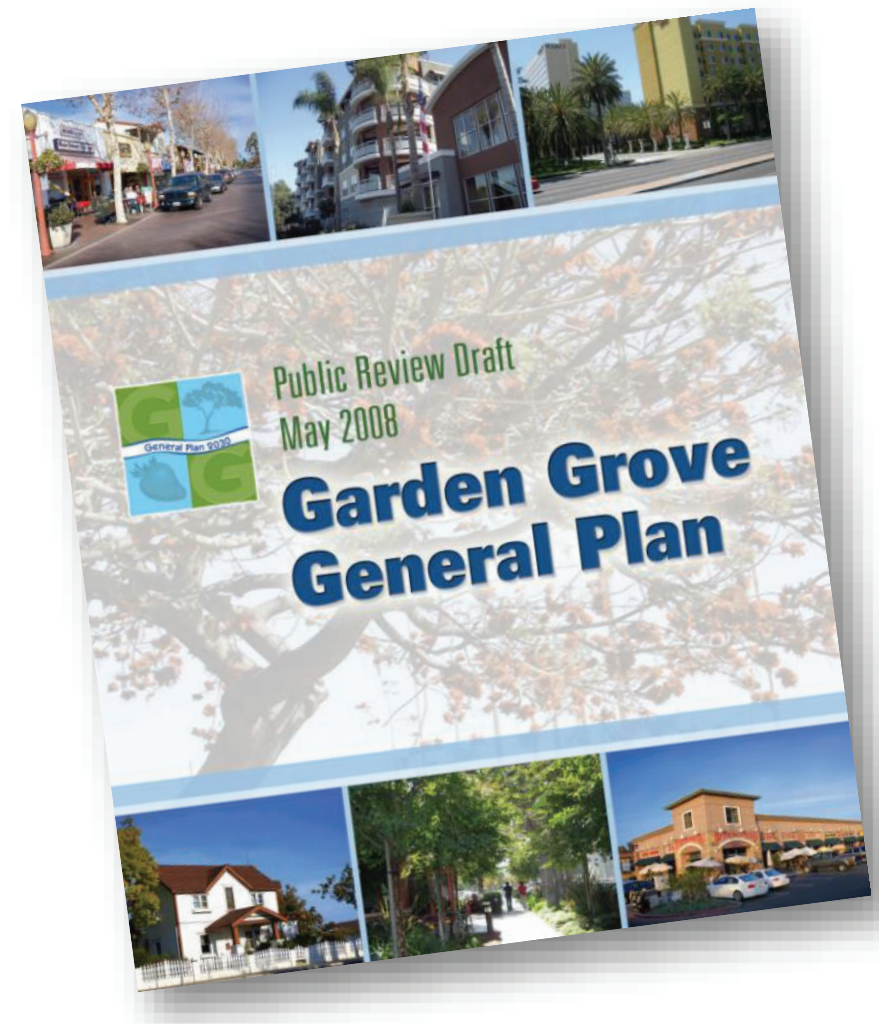
HOUSING, ENVIRONMENTAL JUSTICE, AND SAFETY ELEMENTS

What is a General Plan?



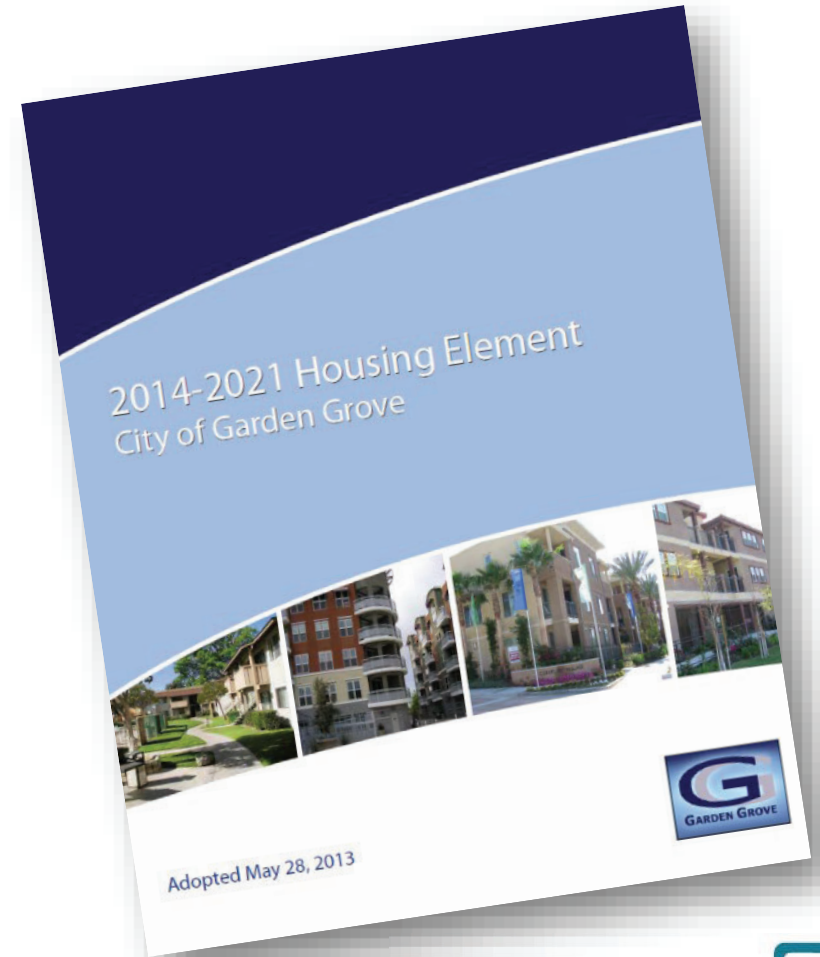
A General Plan...

- Belongs to the community and reflects local vision and values
- Long-term plan for maintenance and change
- A “living” document that can be adjusted over time
- Comprehensive
 - Required topics
 - Defined planning area and/or subareas
 - Planning horizon: 15 to 25 years



General Plan Update and Zoning Amendments

- 2021-2029 Housing Element Update
- New Environmental Justice Element
- Safety Element Update
- Land Use Element Update





City of Garden Grove

HOUSING, ENVIRONMENTAL JUSTICE, AND SAFETY ELEMENTS

Environmental Justice



What is Environmental Justice?



Some communities bear a disproportionate burden of pollution and health risks. Environmental justice seeks to correct this inequality.

Disadvantaged Communities

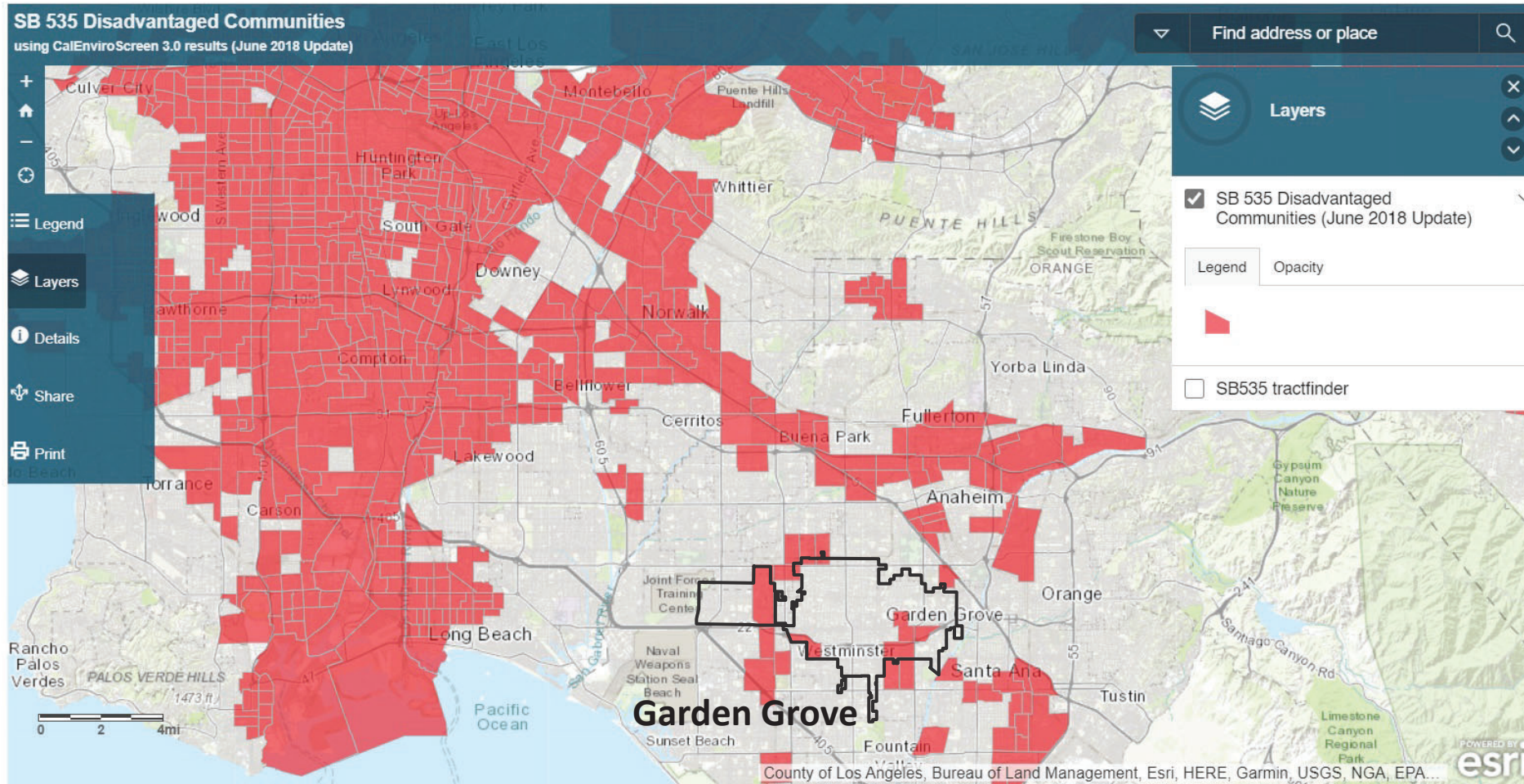
Figure 1. CalEnviroScreen 3.0 Indicator and Component Scoring

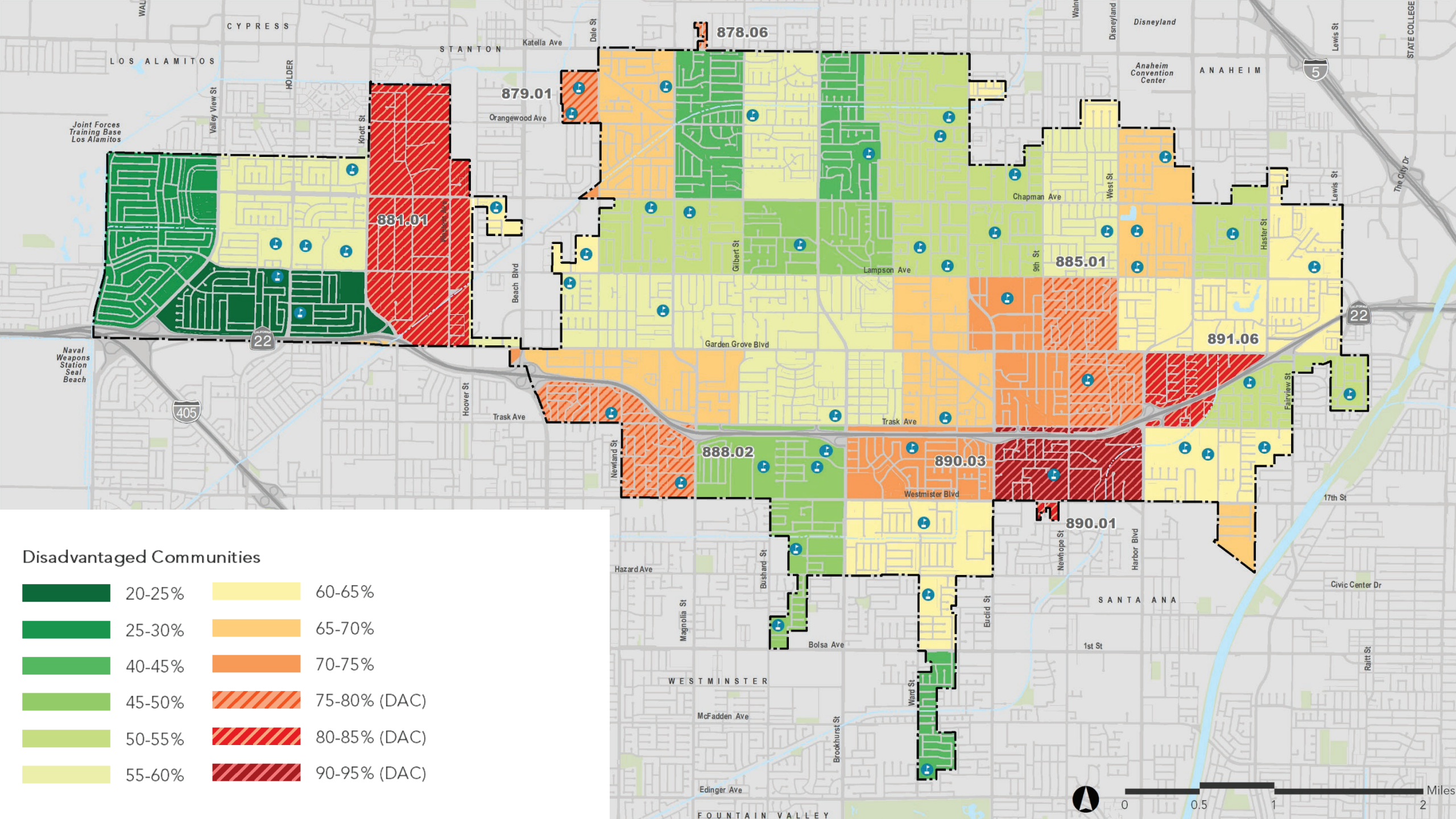
Pollution Burden		Population Characteristics	
<i>Exposures</i>	Ozone Concentrations PM2.5 Concentrations Diesel PM Emissions Drinking Water Quality Pesticide Use Toxic Releases from Facilities Traffic Density	×	<div> <i>Sensitive Populations</i> <ul style="list-style-type: none"> Cardiovascular Disease Low Birth-Weight Births Asthma Emergency Department Visits </div>
	<div> <i>Environmental Effects</i> <ul style="list-style-type: none"> Cleanup Sites Groundwater Threats Hazardous Waste Impaired Water Bodies Solid Waste Sites and Facilities </div>		<div> <i>Socioeconomic Factors</i> <ul style="list-style-type: none"> Educational Attainment Linguistic Isolation Poverty Unemployment Housing Burdened Low Income Households </div>
		= CalEnviroScreen Score	

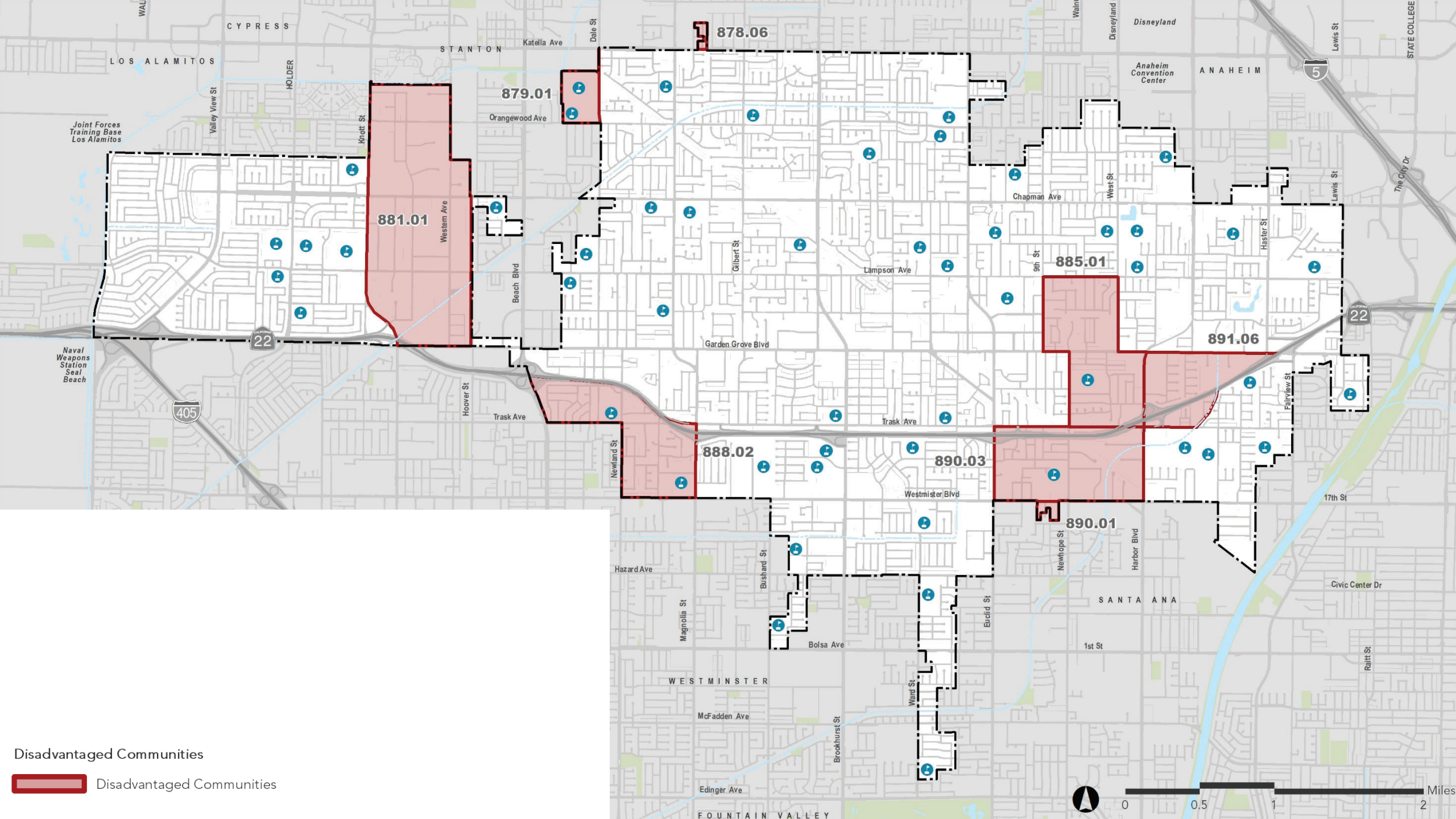
Disadvantaged communities are defined as the top 25% scoring areas from CalEnviroScreen

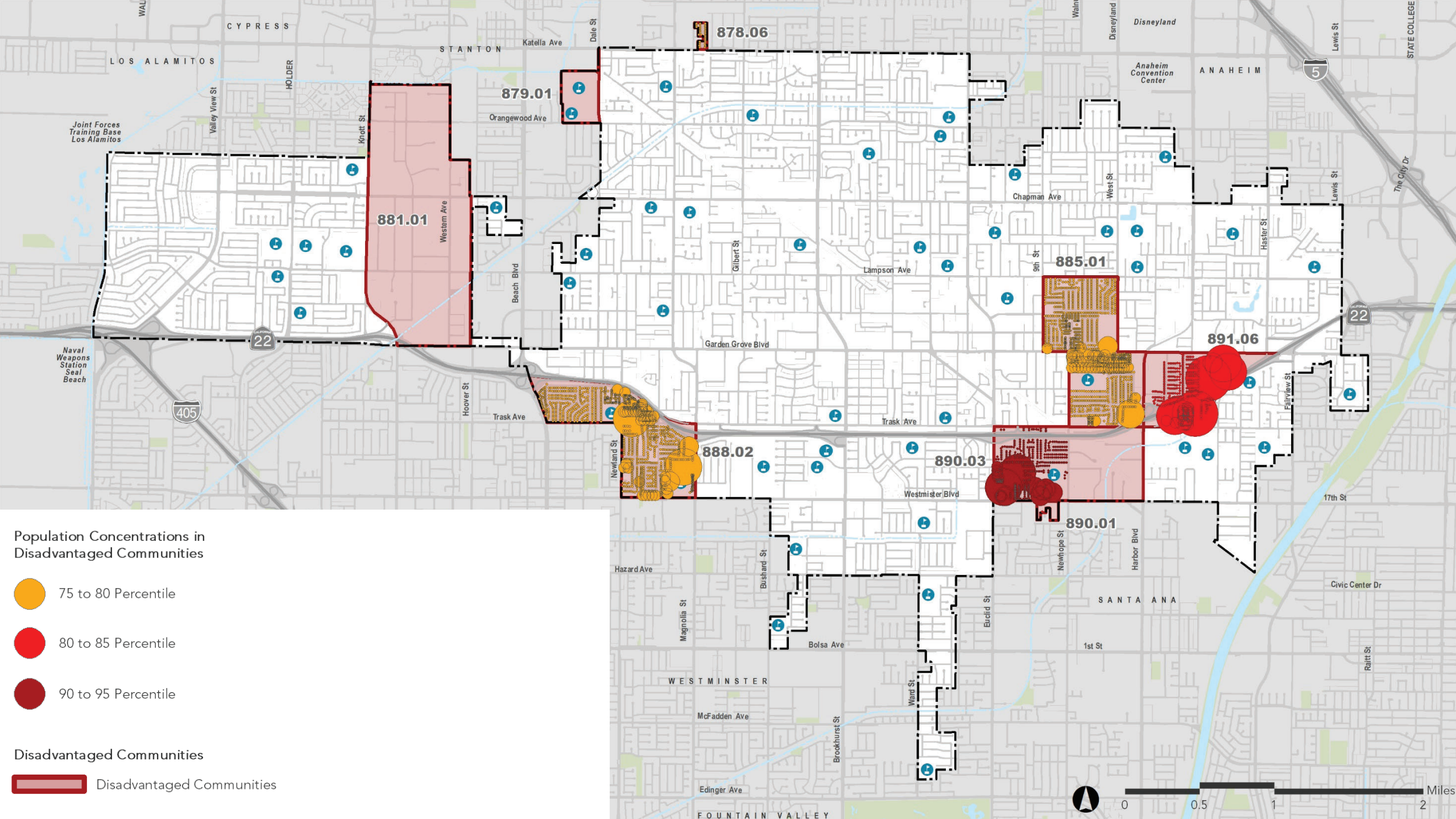


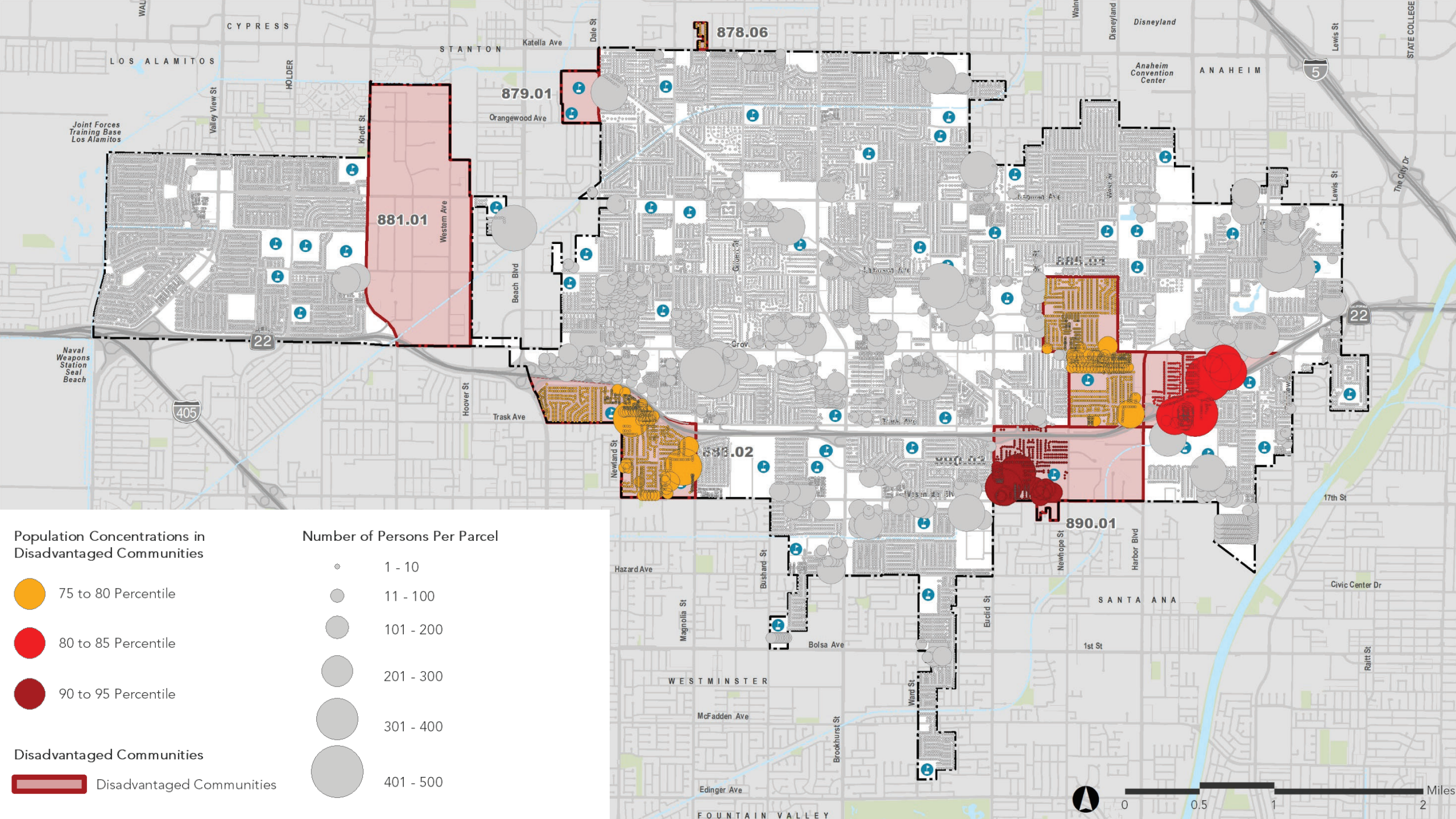
Disadvantaged Communities

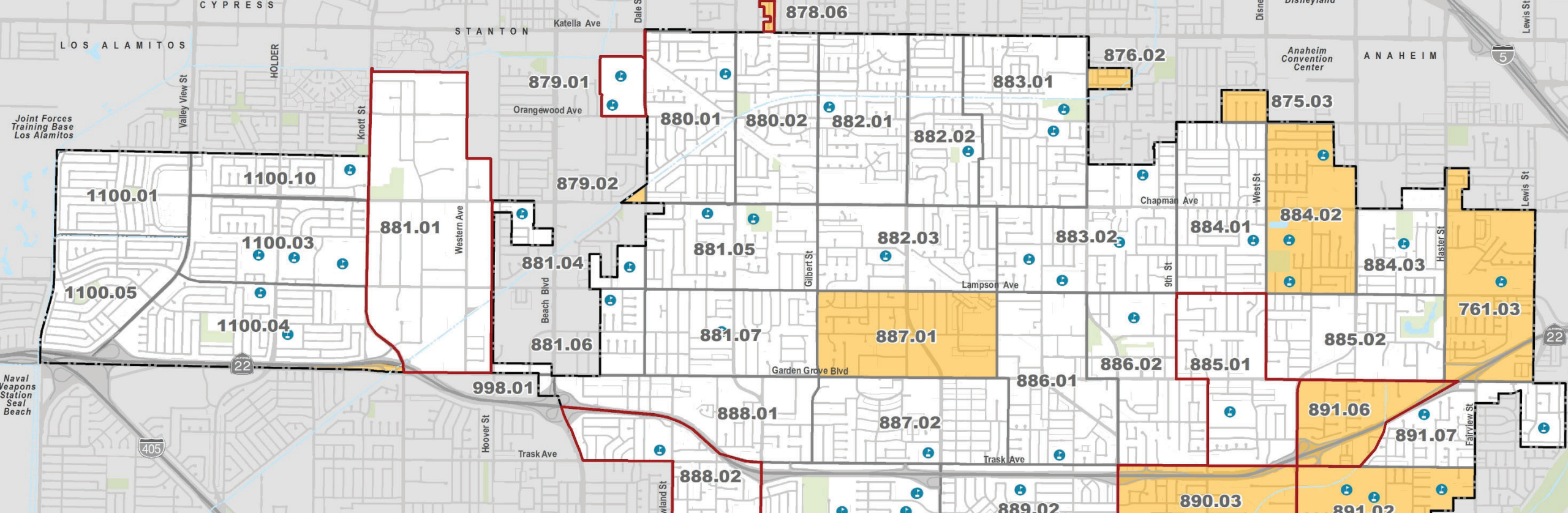










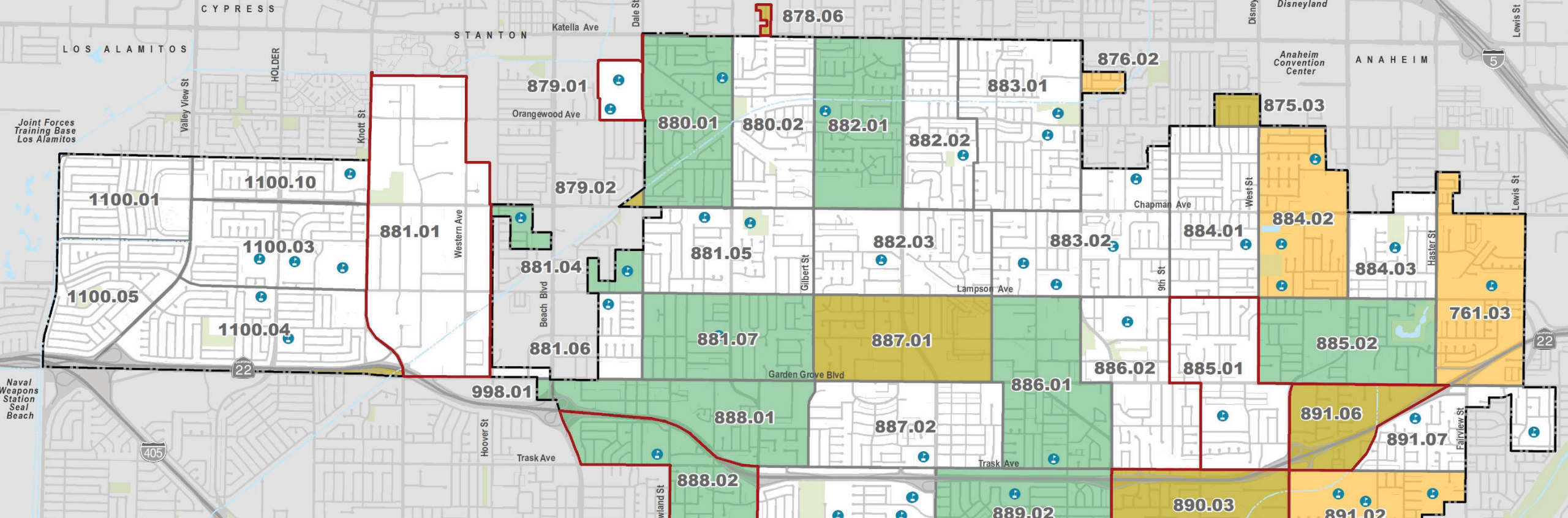


Map 4: Population Characteristics

Educational Attainment

30.1% - 50.4%

Percent of population over 25 years of age not having completed high school.



Map 4: Population Characteristics

Educational Attainment

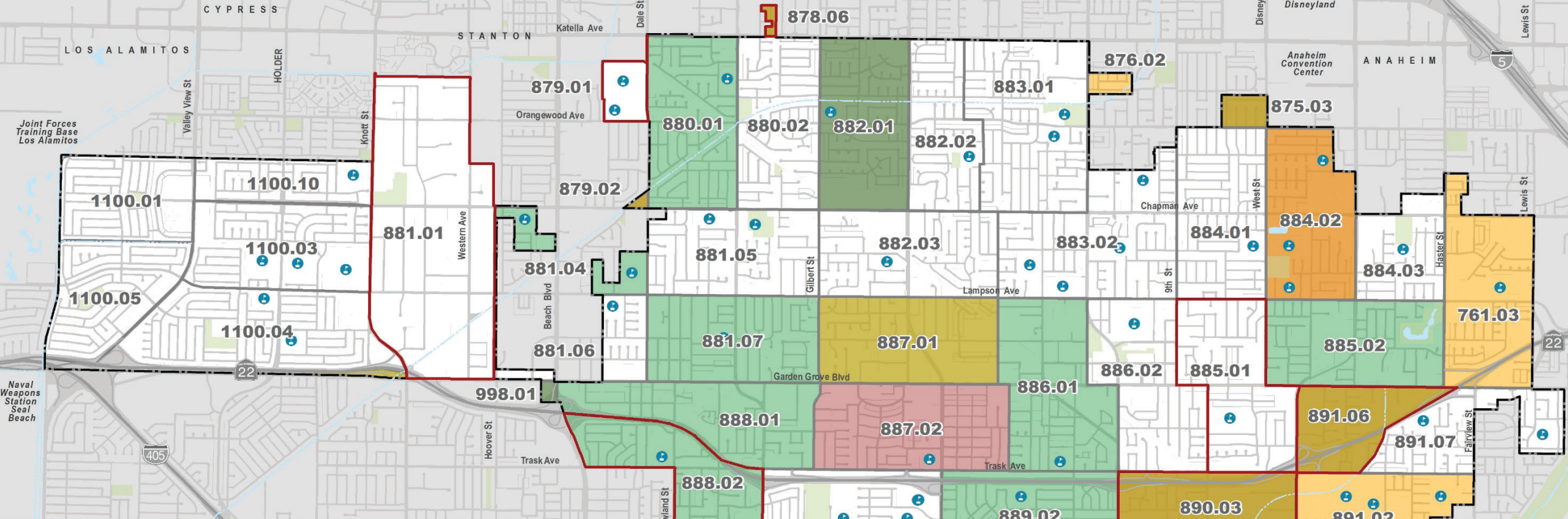
30.1% - 50.4%

Percent of population over 25 years of age not having completed high school.

Linguistic Isolation

20.1% - 36.5%

Percentage of limited English speaking households.



Map 4: Population Characteristics

Educational Attainment

30.1% - 50.4%

Percent of population over 25 years of age not having completed high school.

Linguistic Isolation

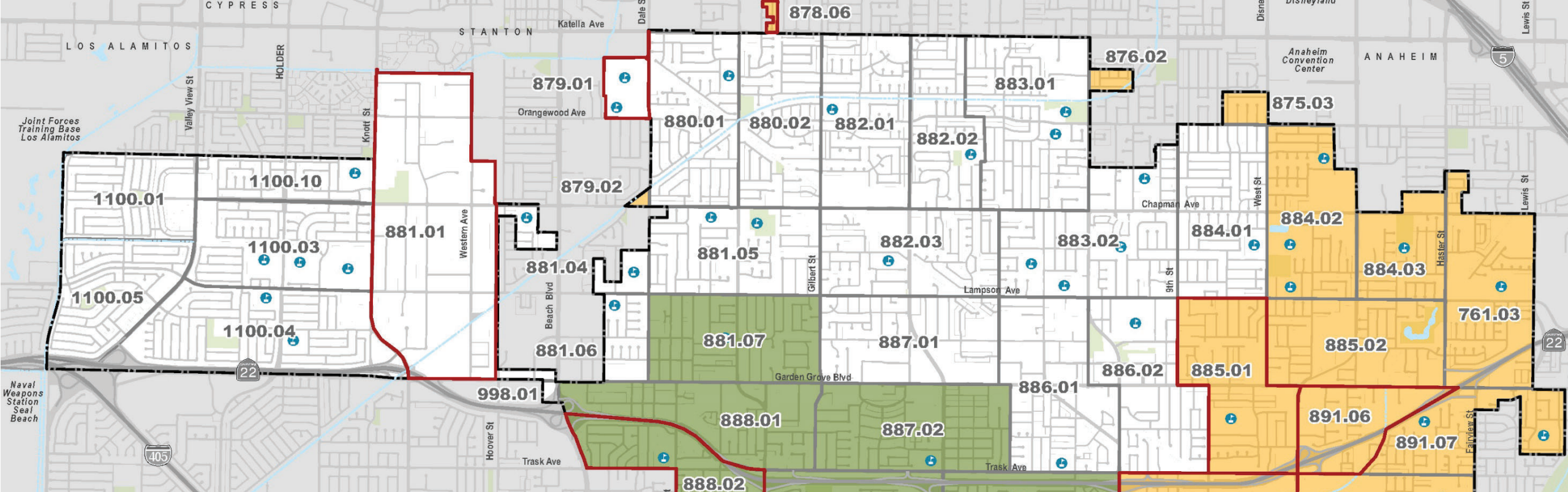
20.1% - 36.5%

Percentage of limited English speaking households.

Poverty

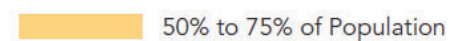
50.1% - 64.5%

Percent of population living below twice the Federal poverty level.

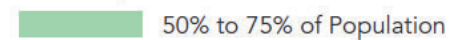


Map 5: Race and Ethnicity

Hispanic/Latino Population



Asian Population

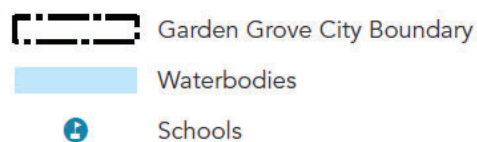


No other census tracts include a race/ethnicity that is greater than 50% of the census tract population.

Disadvantaged Communities

Disadvantaged Communities

Base Map Features



What are the Pollution Burdens?

Toxic Release



98th
Percentile

Traffic
Density



87th
Percentile

PM 2.5



66th
Percentile

Groundwater
Threats



57th
Percentile

Hazardous
Waste



47th
Percentile

Cleanup Sites



43rd
Percentile

Solid Waste
Facilities

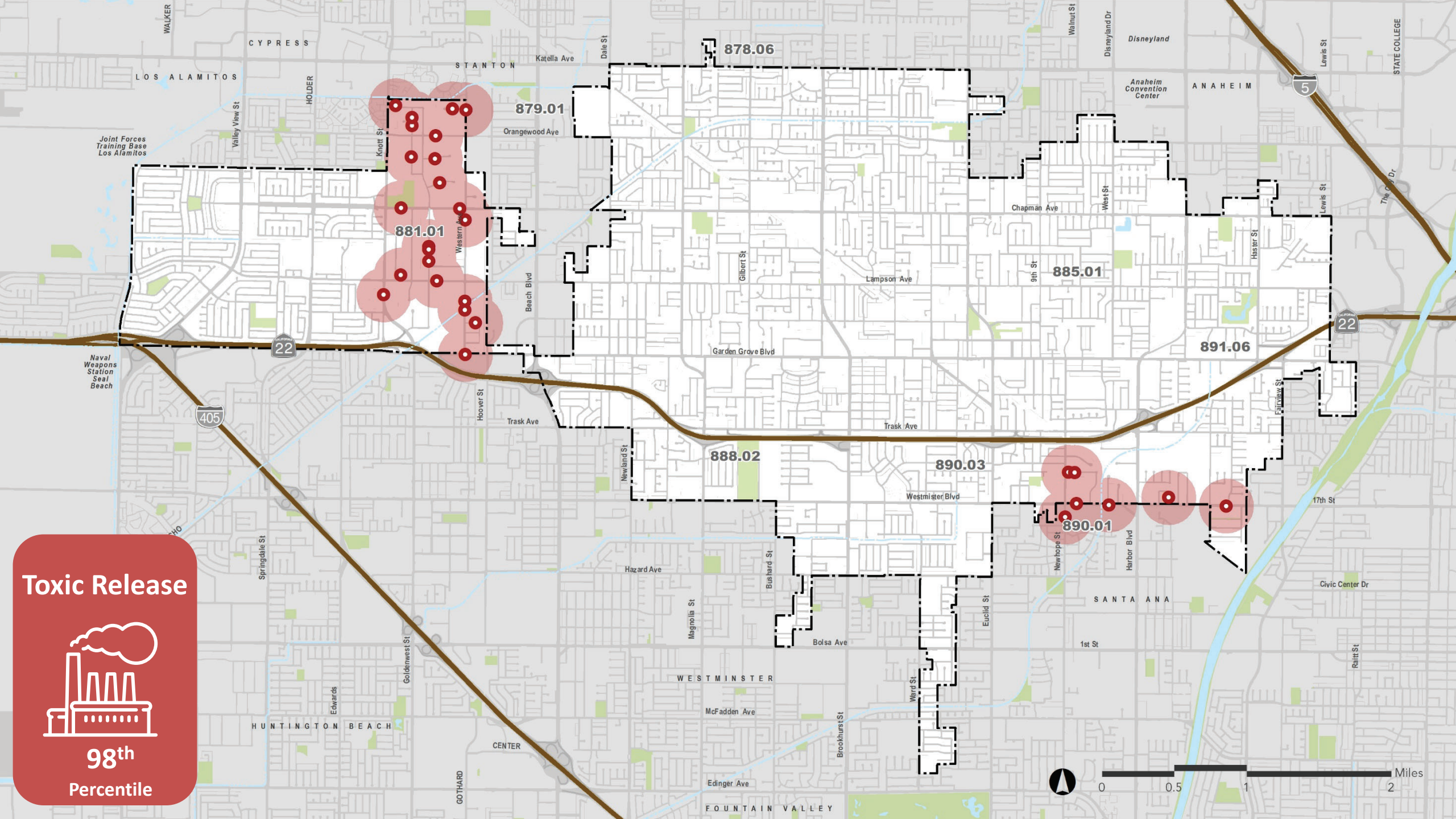


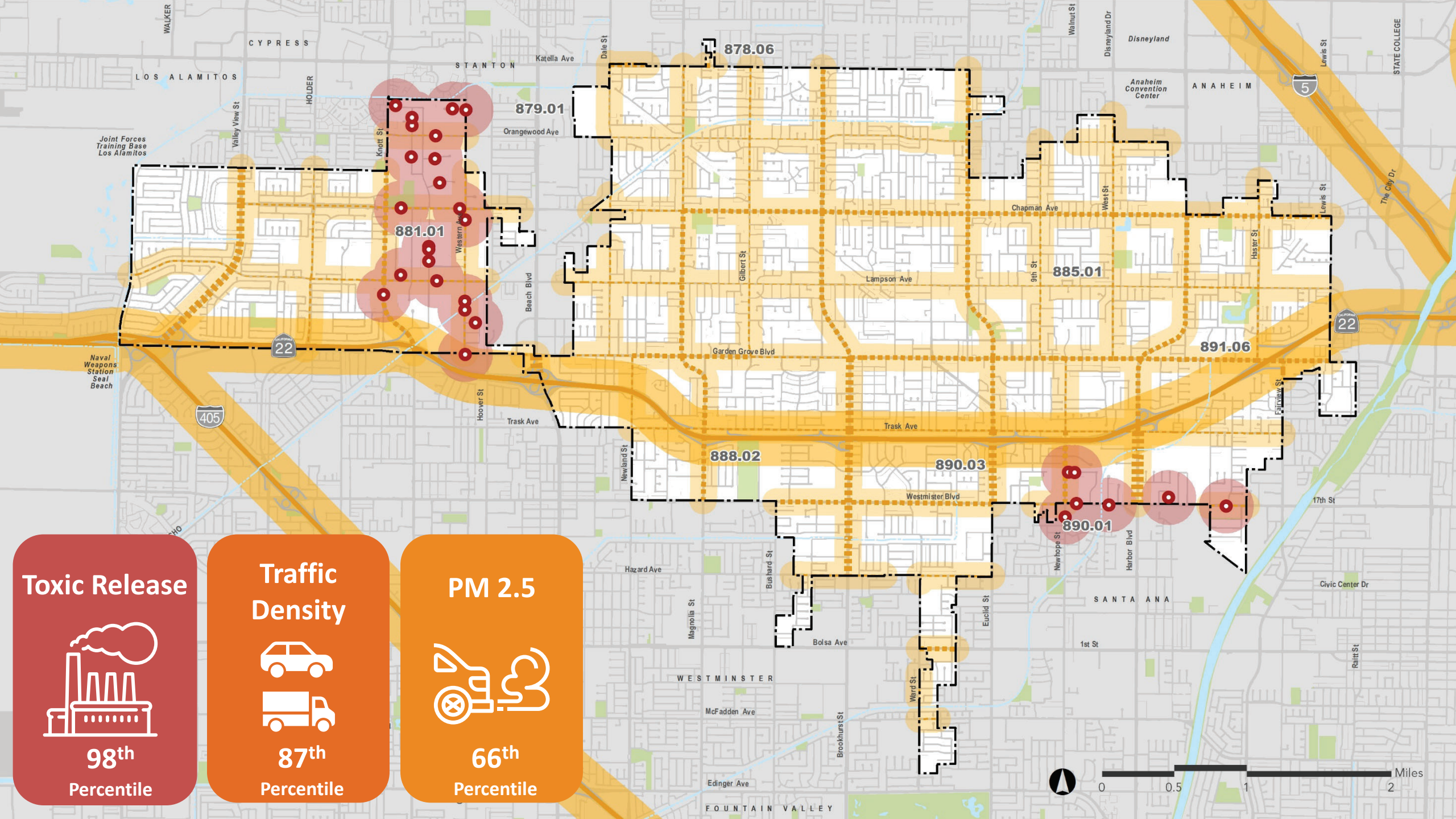
43rd
Percentile

Toxic Release



98th
Percentile





Toxic Release



98th
Percentile

Traffic Density

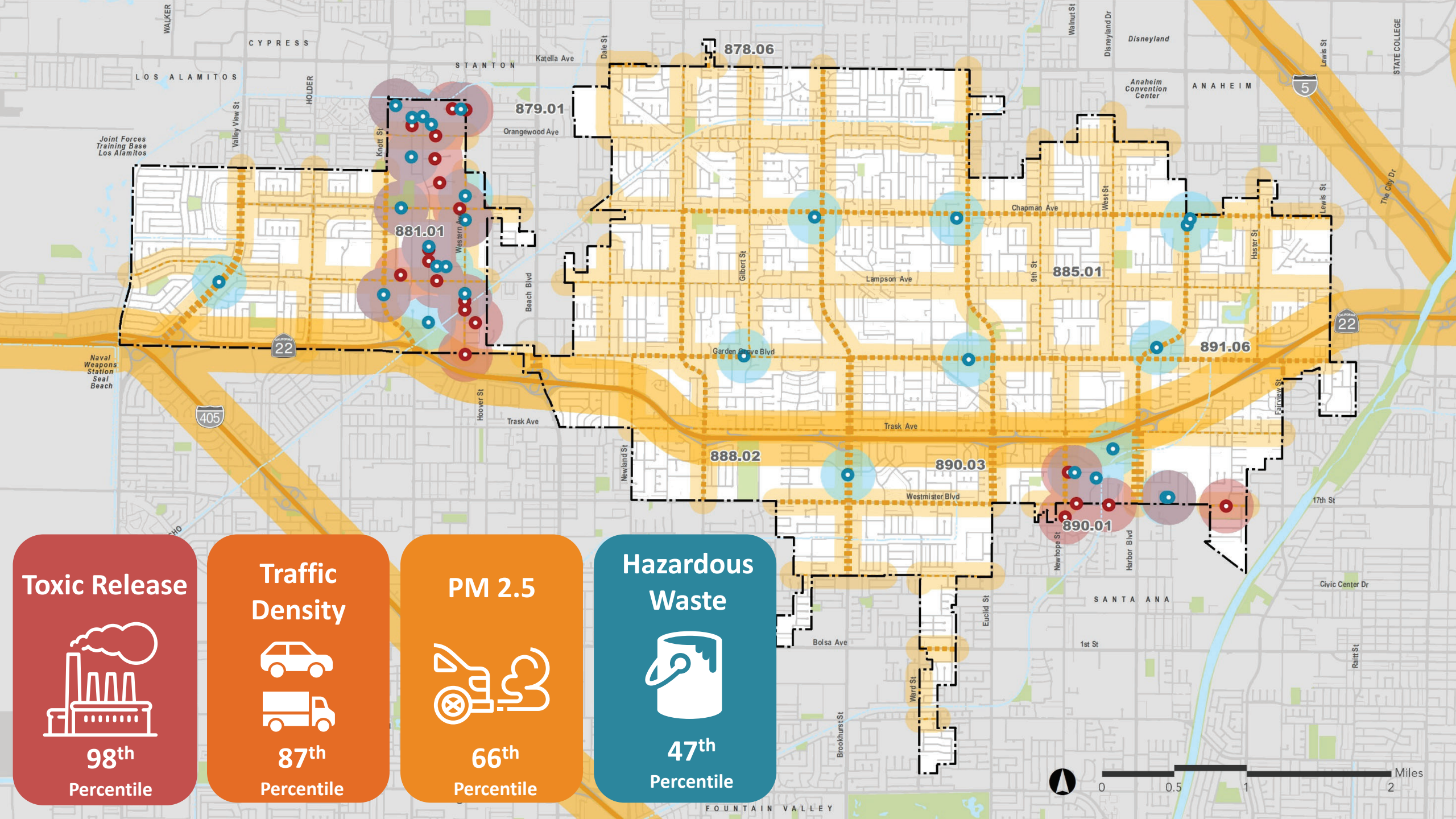


87th
Percentile

PM 2.5



66th
Percentile



Toxic Release



98th
Percentile

Traffic Density



87th
Percentile

PM 2.5

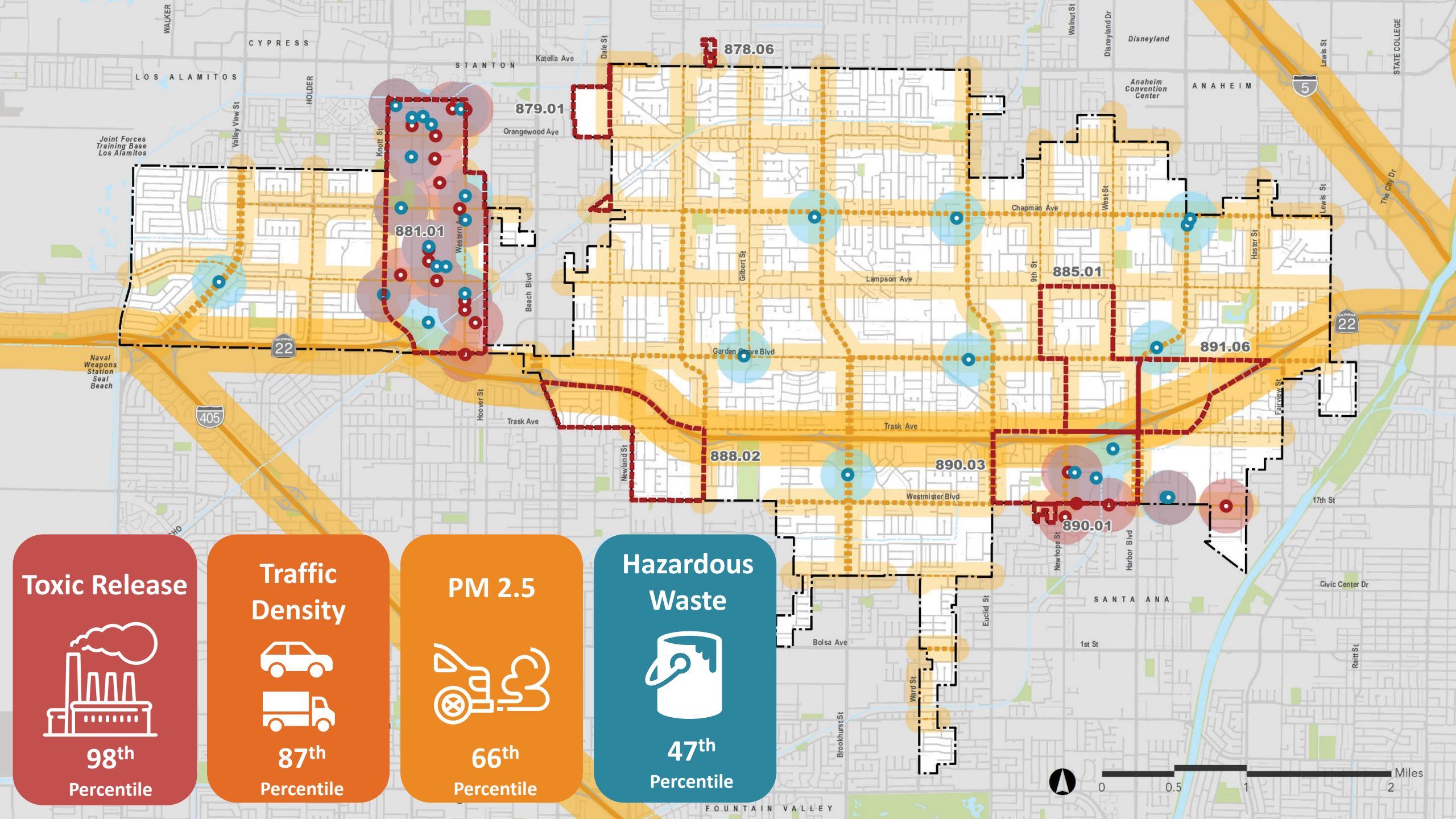


66th
Percentile

Hazardous Waste



47th
Percentile



Toxic Release



98th
Percentile

Traffic Density



87th
Percentile

PM 2.5



66th
Percentile

Hazardous Waste



47th
Percentile

1

Sound Walls and Berms



Create walls and space between polluters and people.

2

Pollution Prevention Plan



Prepare Pollution Prevention Plan: apply methods to prevent pollution.

3

Trees and Green Buffers



Add plants and trees to soak up noise and pollution.

4

Clean Indoor Air



Make indoor air cleaner and quieter by improving windows, adding insulation, and central air in homes, schools, etc.

5

Enforcement/Monitoring



Consult with regional agencies to support rigorous monitoring and enforcement of air pollution areas.

6

Site Polluters Away from Residential Areas



Restrict high pollution businesses near residential neighborhoods.

Minimize pollution burdens

Choose your top strategy to improve air quality and reduce pollution.



City of Garden Grove

HOUSING, ENVIRONMENTAL JUSTICE, AND SAFETY ELEMENTS

Addressing Community Needs



Addressing Community Needs



Increase
Walking,
Biking, and
Transit Use



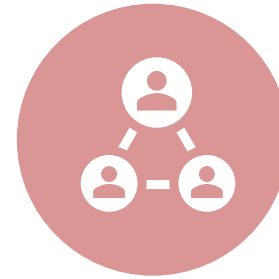
Park Access
and Active
Living



Access to
Healthy Foods



Community
Services



Community
Engagement
and
Participation



Safe and
Affordable
Housing



Increase Walking, Biking, and Transit Use





1

More bike and trail facilities

Support additional bicycle and trail facilities.



2

Pedestrian Improvements

Support pedestrian improvements and amenities along streets and intersections.



3

More Shade Trees

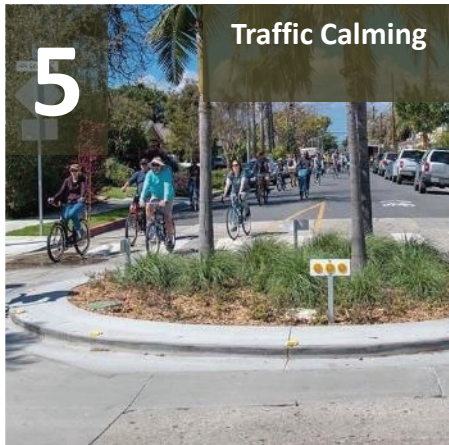
Increases tree coverage, providing more shade and reducing air pollution impacts.



4

Improving access to transit

Improve access to bus stops and support future transit station(s).



5

Traffic Calming

Slow vehicles to safe speeds and minimize cut-through traffic in neighborhoods.



6

Way-finding Signage

Provides signage to guide visual connectivity to destinations.



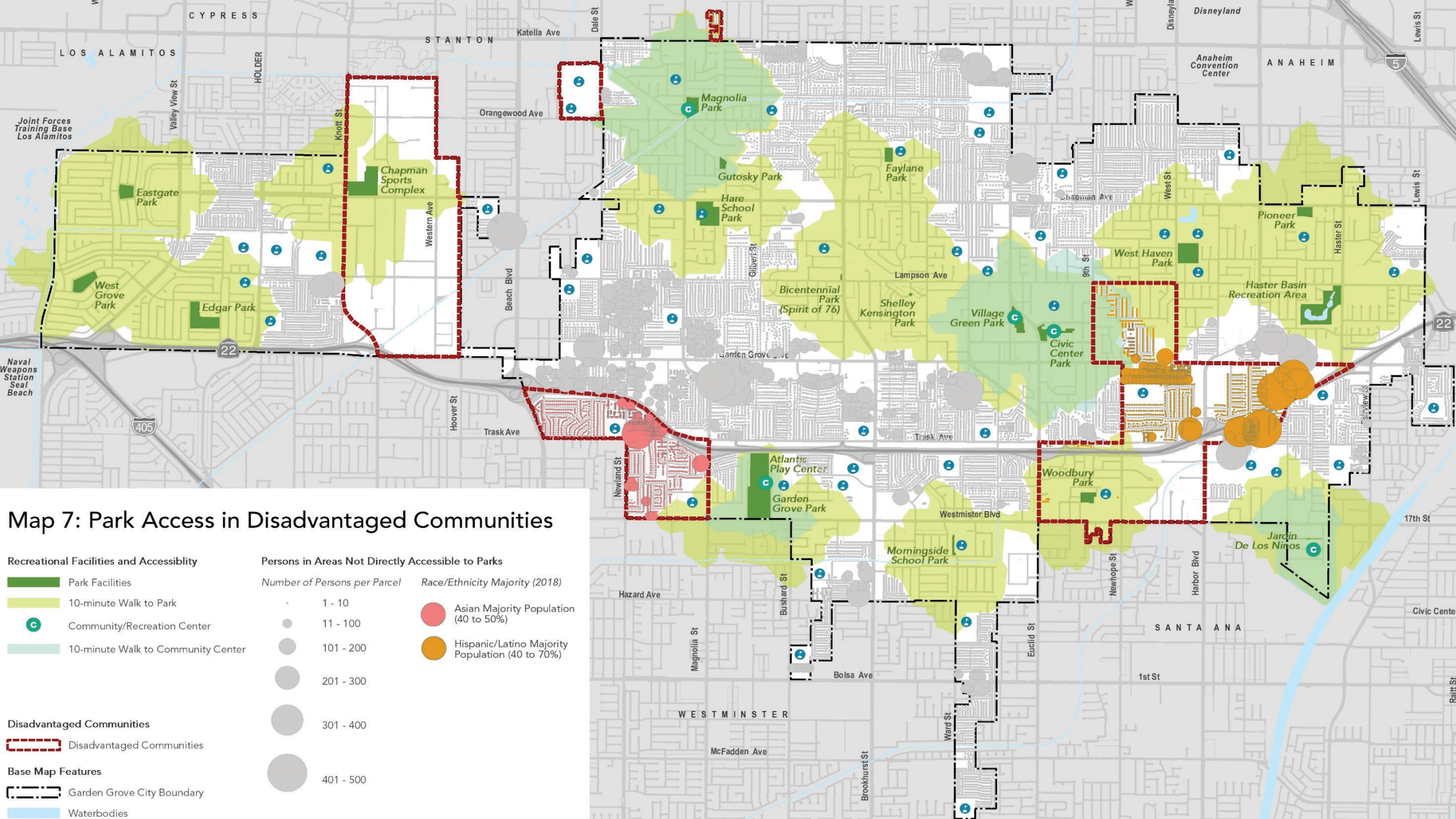
Increase Walking, Biking, and Transit Use

Choose your top priority for increasing walkability, biking, and transit use.



Park Access and Active Living







1

Park/Open Spaces

Require new development to provide public park/open space as part of their development.



2

Reuse of excess right-of-way

Build recreation amenities utilizing remnant properties along freeways, utility corridors, and storm channels.



3

Park Improvements

Ensure park improvements are designed strategically per community needs.



4

Special Events and Activities

Operate and expand citywide special events that are popular with the community.



5

Park Mobile Activities, Vendors, and Kiosks

Support rotating mobile activities, portable kiosks, and traveling vendors at parks throughout the City.



6

Park Maintenance

Ensure ongoing park and recreational facilities maintenance.



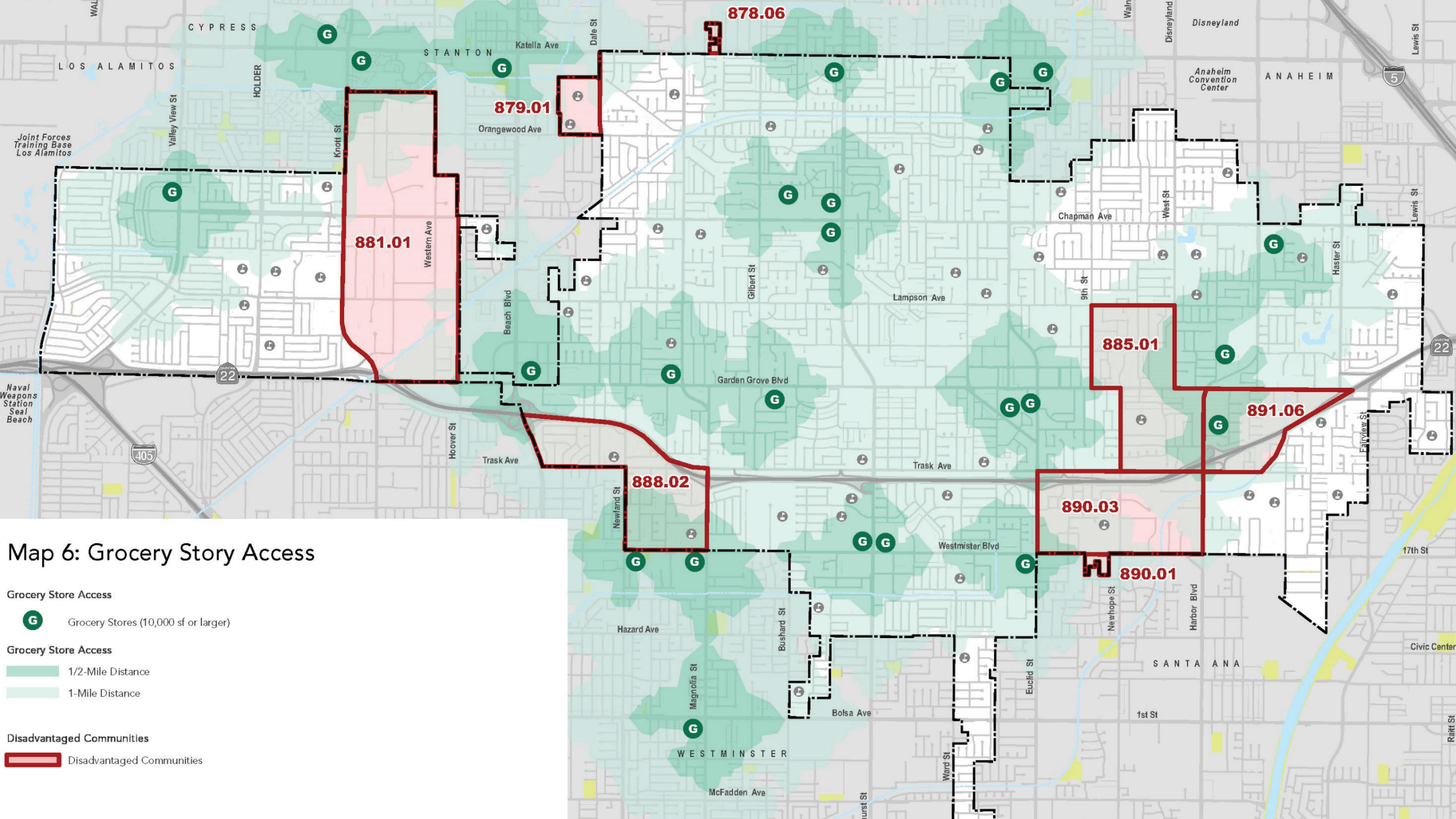
Park Access and Active Living

Choose your top strategy for promoting access to parks and active living.



Access to Healthy Foods







**Community
Gardens**

1

Increase access to community gardens.



Increase access to local and nutritious foods.



**Affordable
Foods**

3

More fresh, healthy foods affordable and available to everyone in need.



**Local Grocery
Stores**

4

Local stores with quality fresh produce and healthy foods.



**Cooking
Classes**

5

Establish a healthy food campaign that promotes healthy cooking.



Food Programs

6

Continue food service programs for seniors, families, and individuals in need.



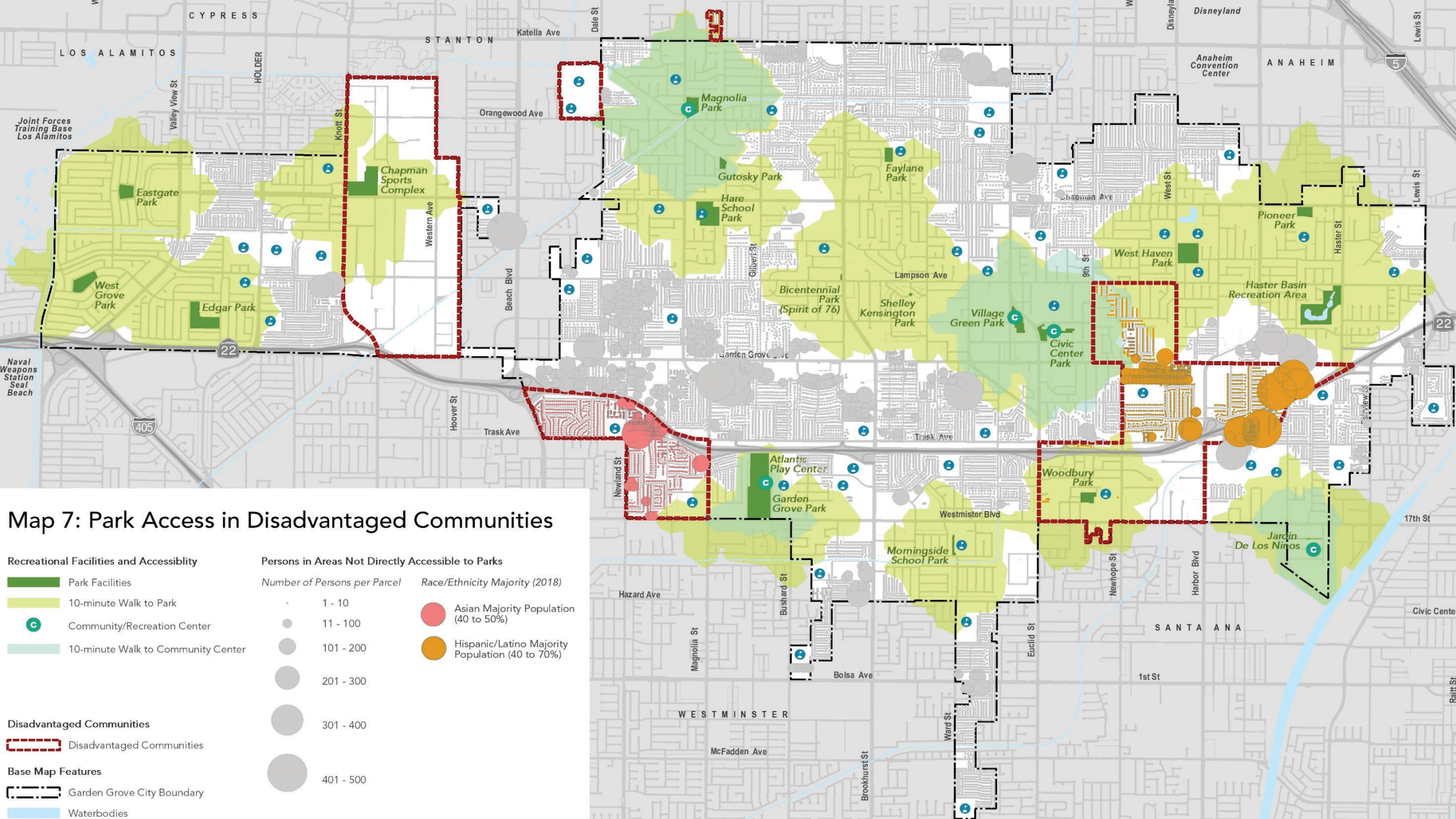
Access to Healthy Foods

Choose your top strategy for promoting access to healthy foods.



Community Services







1

Youth Programs

Provide youth and teens with programs, events, and activities.



2

Workforce Development

Provide resources for residents seeking to advance in their careers.



3

Library Services

Expand library services and facilities.



4

After-school Programs

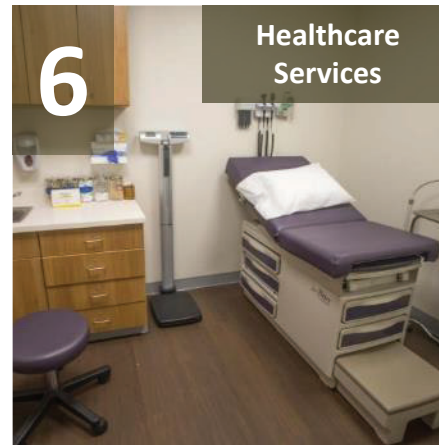
Increase after-school programs and childcare facilities.



5

Senior Programs

Senior services and programs (housing, recreation, social network).



6

Healthcare Services

Enhance physical/mental healthcare services.



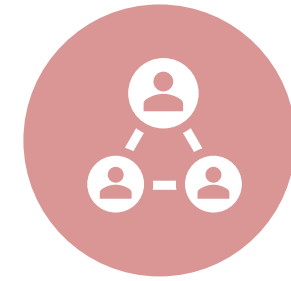
Community Services

Choose your top priority for additional community services.



Community Engagement and Participation





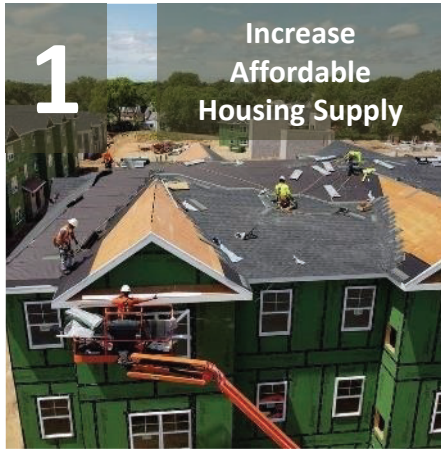
Civic Engagement

Choose your top strategy for promoting civic engagement.



Affordable Housing and Housing Services





1

Increase
Affordable
Housing Supply

Require affordable housing units as a percentage of new large residential projects.



2

Accessory
Dwelling Units

Actively encourage the development of accessory dwelling units.



3

Housing
Assistance

Housing assistance programs for first time homeowners.



4

Homeless
Services

Provide more services for homeless population and those at-risk of becoming homeless.



5

Supportive Housing
Services

Supportive services to help people with chronic physical and mental health issues maintain stable housing and receive health care.



6

Equal Access to
Housing

Address housing discrimination issues.



Expanding Affordable Housing and Services

Choose your top strategy for expanding housing and services.



City of Garden Grove

HOUSING, ENVIRONMENTAL JUSTICE, AND SAFETY ELEMENTS

Public Comments





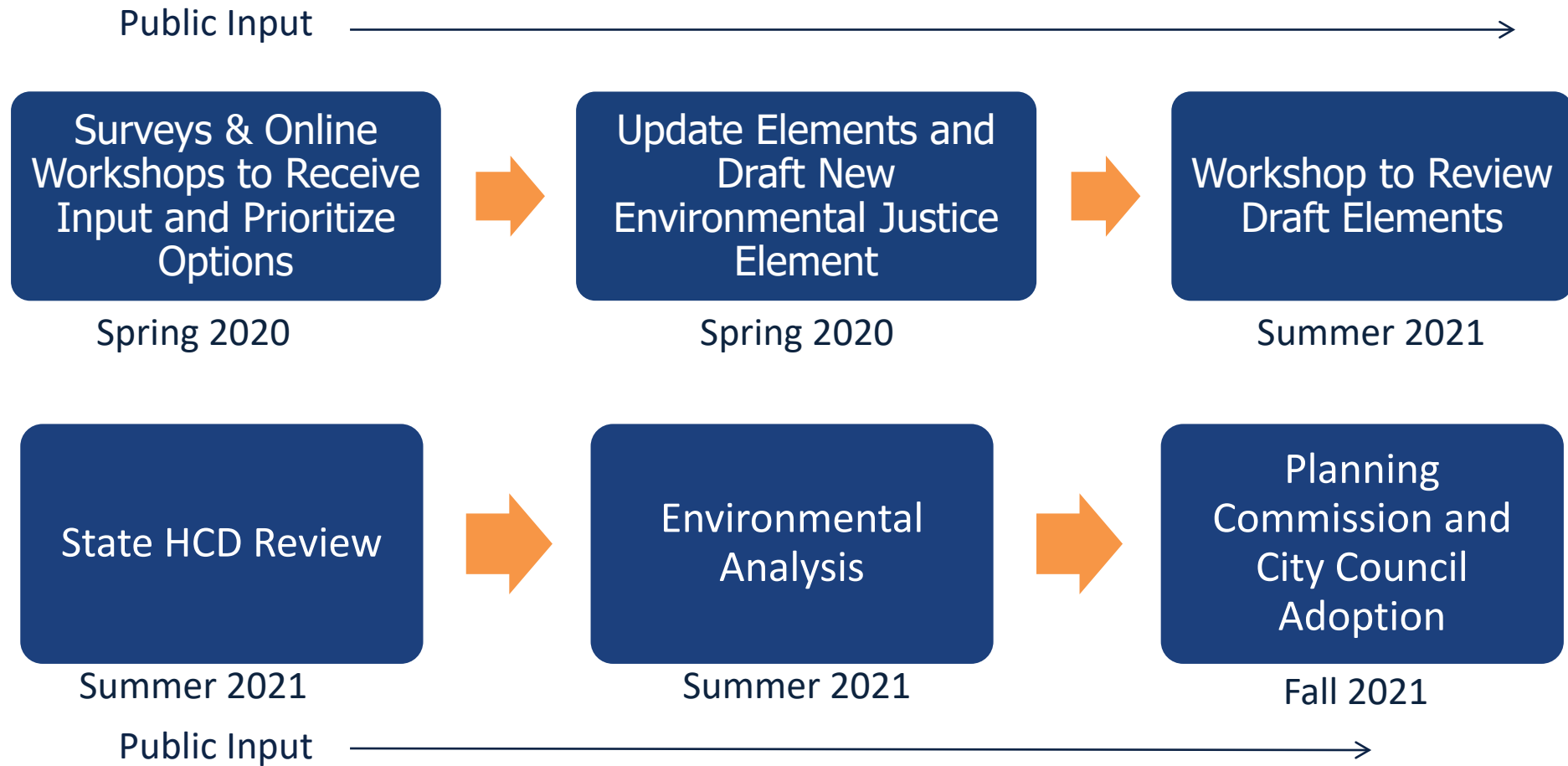
City of Garden Grove

HOUSING, ENVIRONMENTAL JUSTICE, AND SAFETY ELEMENTS

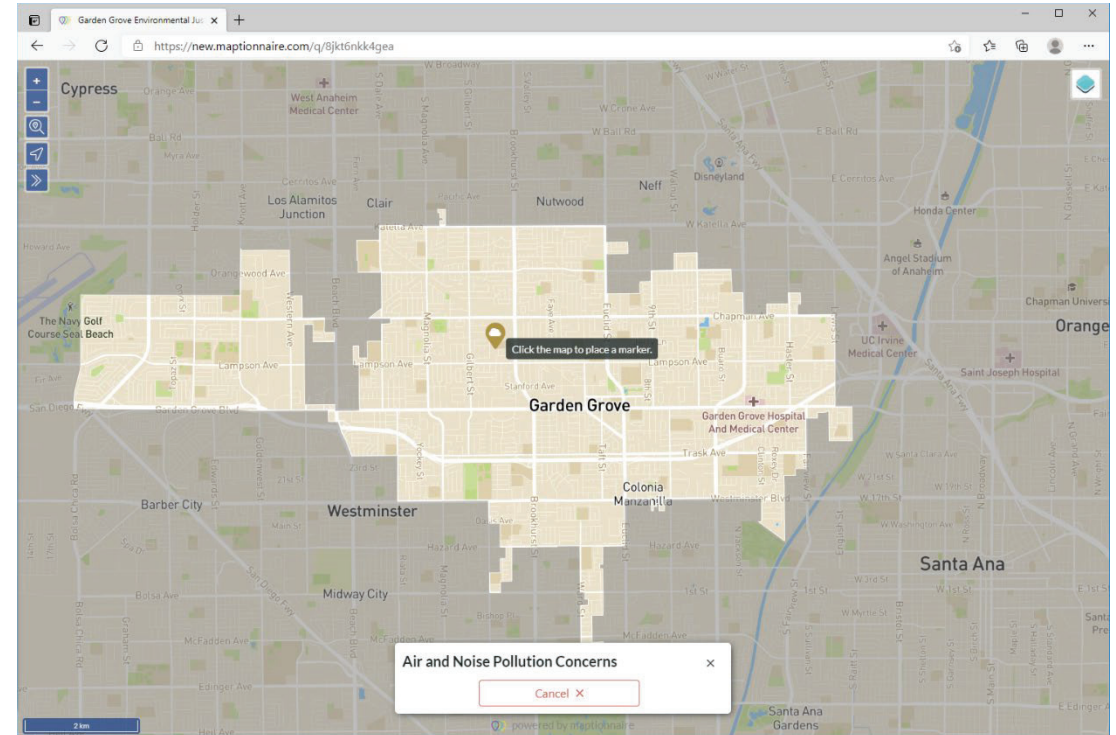
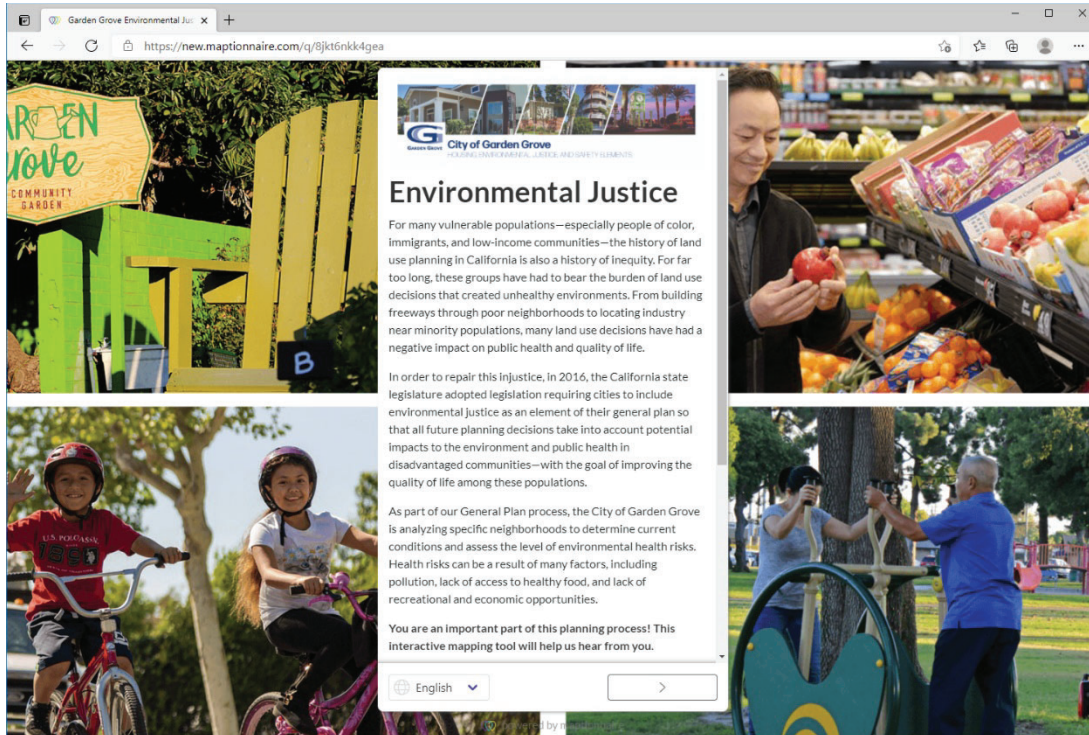
Next Steps



Program Timeline



Online Mapping Survey



<https://ggcity.org/housing-element>



City of Garden Grove

HOUSING, ENVIRONMENTAL JUSTICE, AND SAFETY ELEMENTS

Community Workshop April 21, 2021

