

## APPENDIX A:

---

# CONCEPT PLANS

---

### Downtown Focus Corridors

1. Acacia Parkway
2. Nelson Street
3. Stanford Avenue
4. 9th Street

### Primary Downtown Corridors

5. Euclid Street
6. Garden Grove Boulevard
7. Main Street

### Other Sidewalk Improvements

8. 7th Street
9. 8th Street
10. Grove Avenue

NELSON STREET

ACACIA PARKWAY

MATCH LINE - PAGE 2



MATCH LINE - PAGE 1

GROVE AVENUE

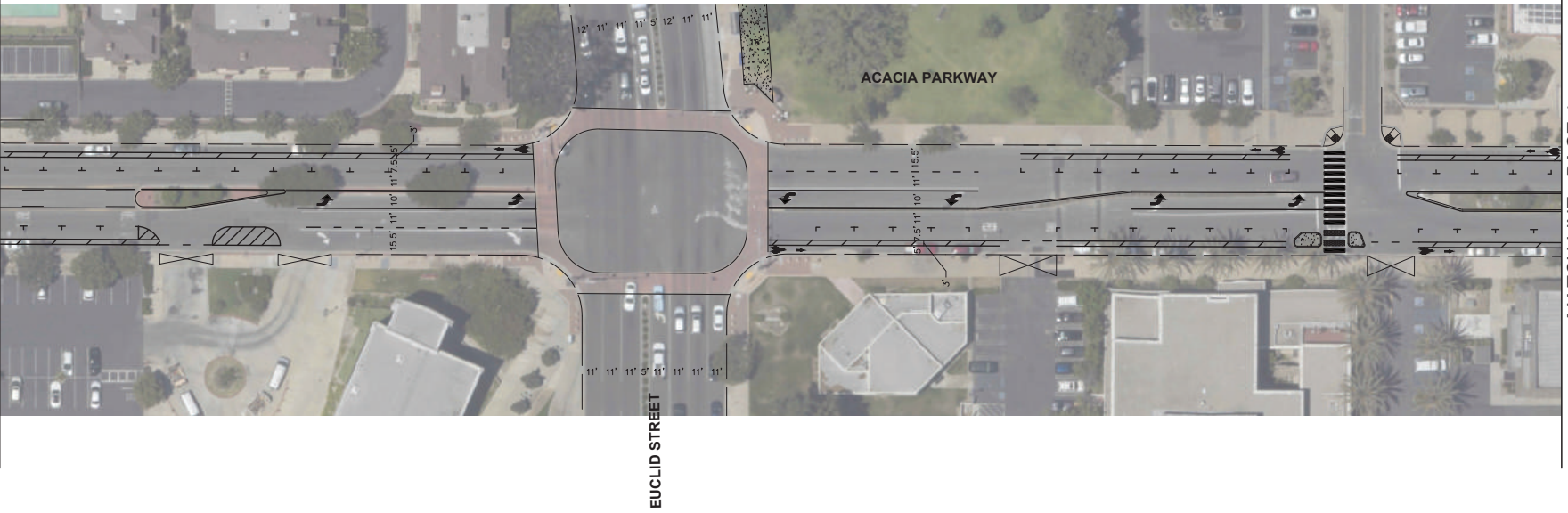
MAIN STREET

ACACIA PARKWAY

MATCH LINE - PAGE 3

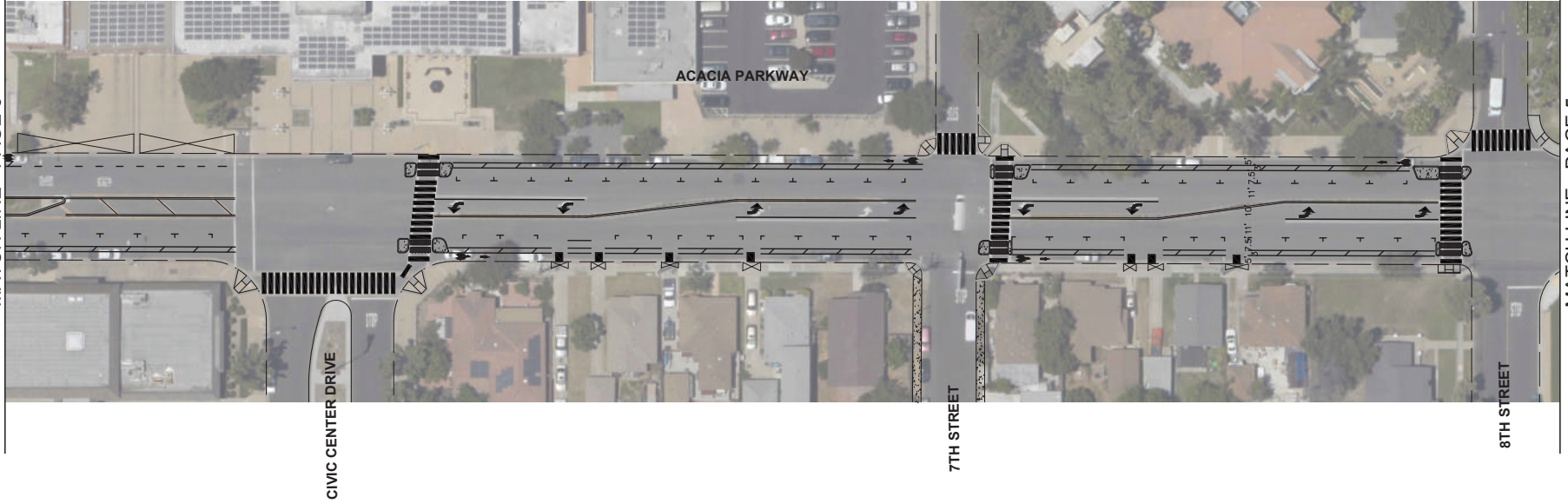


MATCH LINE - PAGE 2



MATCH LINE - PAGE 4

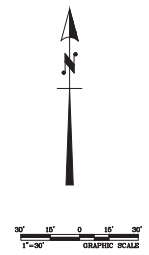
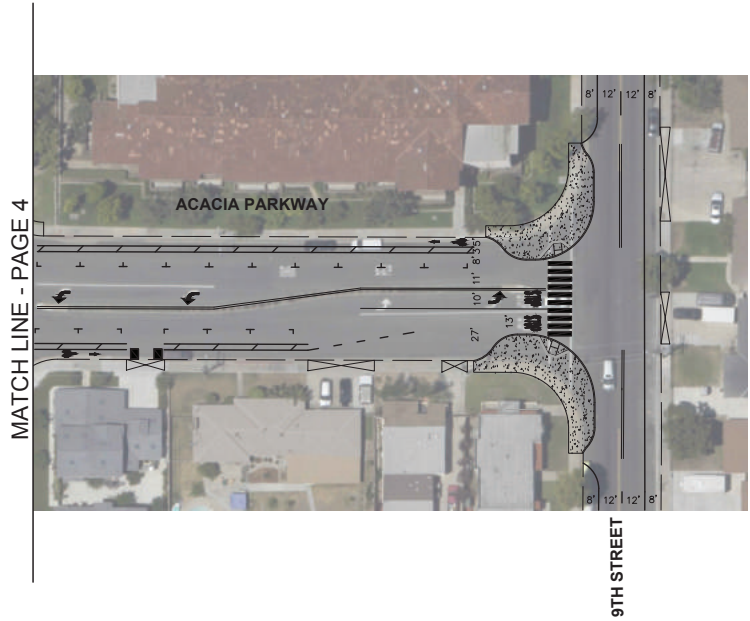
MATCH LINE - PAGE 3



CITY OF GARDEN GROVE

Acacia Parkway

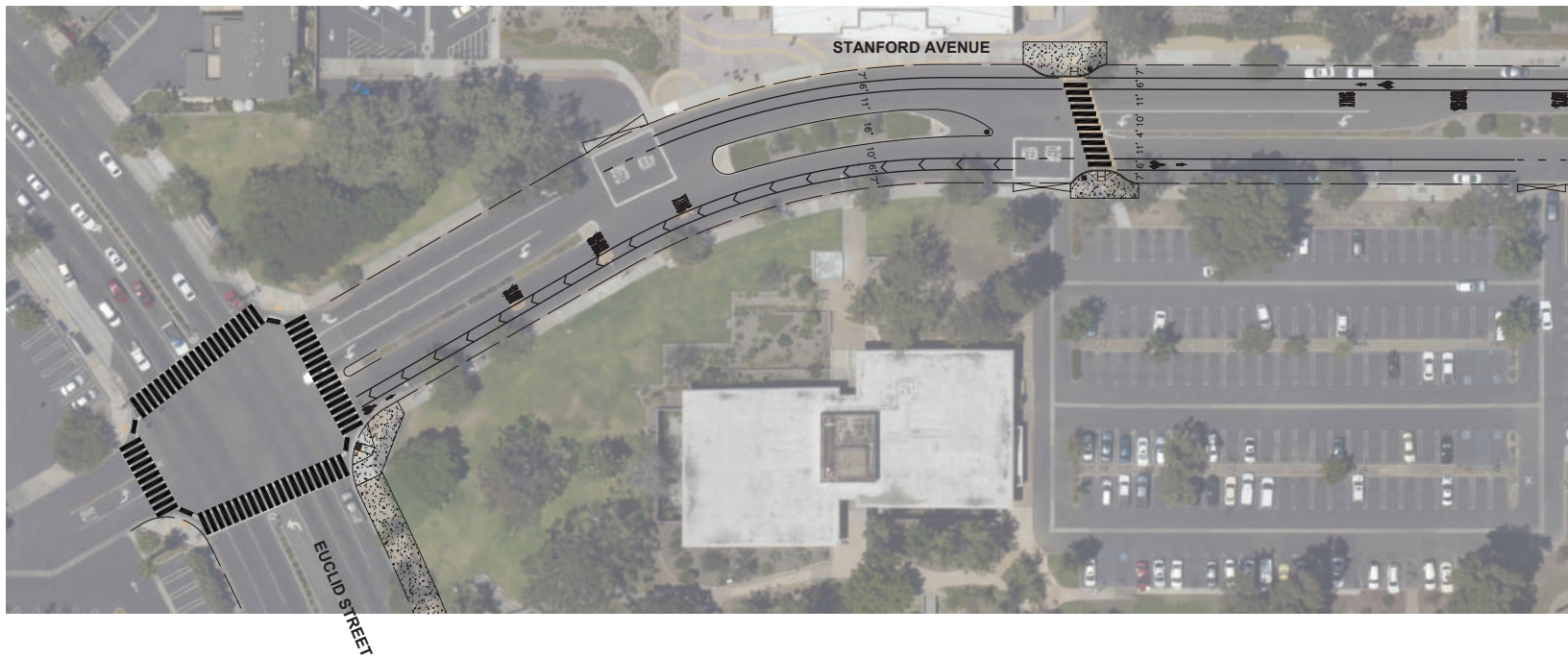
PG-4



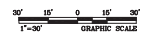
CITY OF GARDEN GROVE	
Acacia Parkway	PG-5







MATCH LINE - PAGE 2



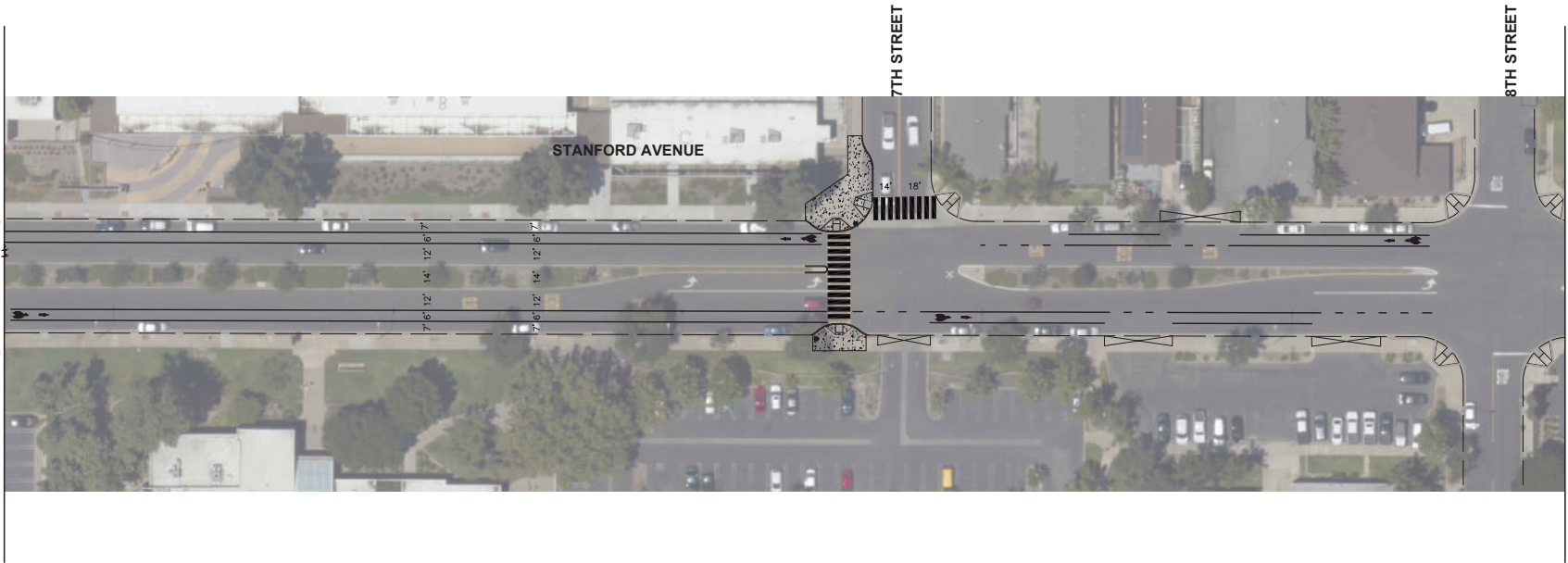
CITY OF GARDEN GROVE

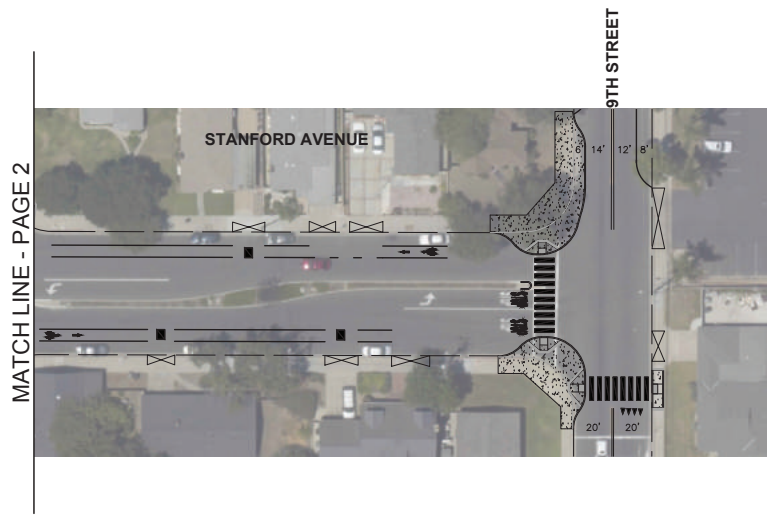
Stanford Avenue

PG-1



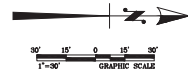
MATCH LINE - PAGE 1





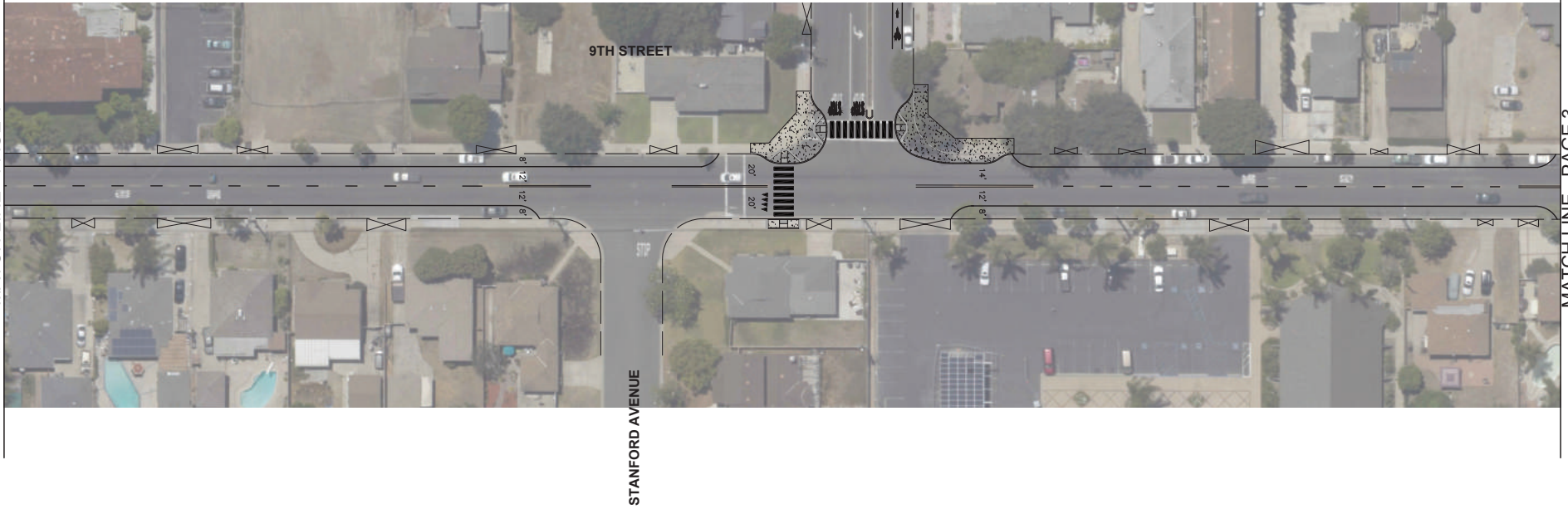


MATCH LINE - PAGE 2

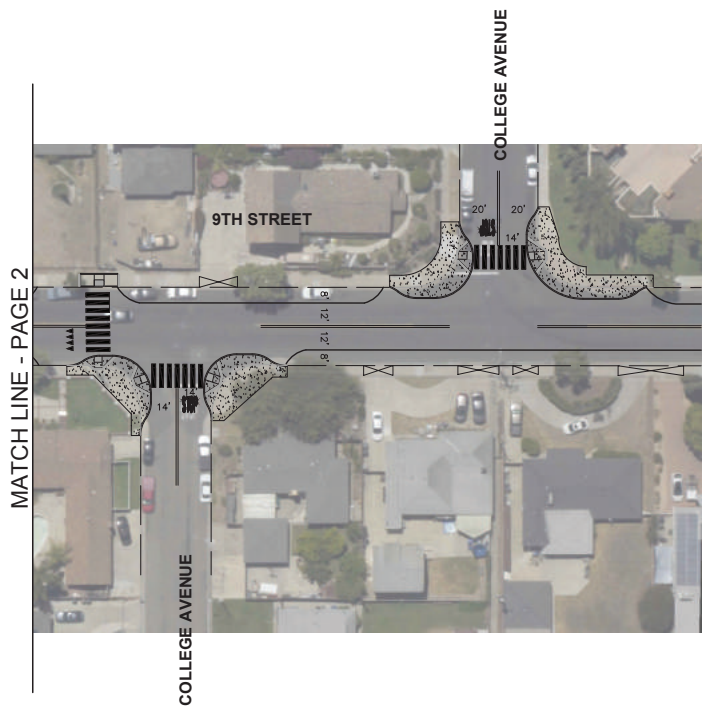


CITY OF GARDEN GROVE	
9th Street	PG-1

MATCH LINE - PAGE 1

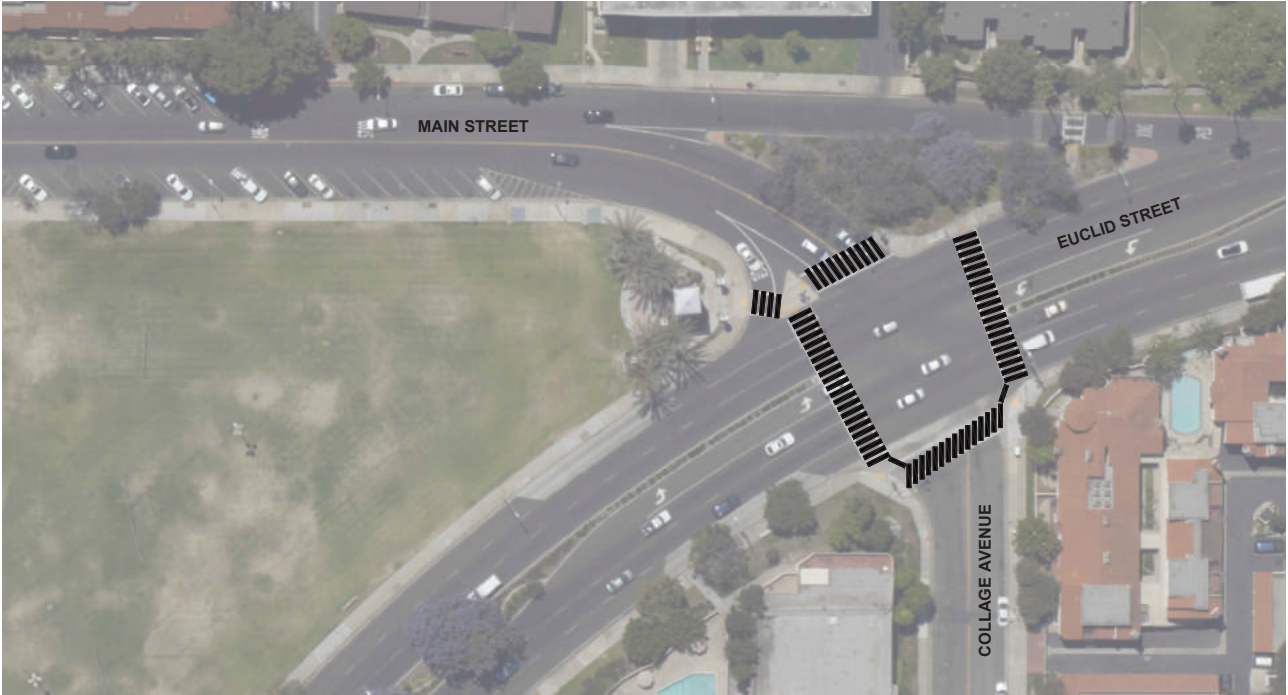


MATCH LINE - PAGE 3











NELSON STREET

GARDEN GROVE BOULEVARD

MATCH LINE - PAGE 2



MATCH LINE - PAGE 1

GROVE AVENUE

MAIN STREET

MATCH LINE - PAGE 3





MATCH LINE - PAGE 2

EUCLID STREET

GARDEN GROVE BOULEVARD

MATCH LINE - PAGE 4



MATCH LINE - PAGE 3

MATCH LINE - SEE TOP RIGHT

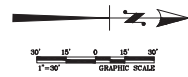


CITY OF GARDEN GROVE

Garden Grove Boulevard

PG-4





CITY OF GARDEN GROVE

7TH STREET

PG-1









## APPENDIX B:

# COST ESTIMATES

### Downtown Focus Corridors

1. Acacia Parkway
2. Nelson Street
3. Stanford Avenue
4. 9th Street

### Primary Downtown Corridors

5. Euclid Street
6. Garden Grove Boulevard
7. Main Street

### Other Sidewalk Improvements

8. 7th Street
9. 8th Street
10. Grove Avenue



## Preliminary Engineers Cost Estimate

**City:** Garden Grove  
**Project:** Garden Grove Active Downtown  
**Location:** Acacia Parkway from Nelson Street to 9th Street  
**Date:** 1/30/2020

ITEM NO.	ITEM DESCRIPTION	ESTIMATED QUANTITY	UNIT OF MEASURE	UNIT PRICE	ITEM TOTAL
<b>GENERAL</b>					
1	Mobilization	1	LS	\$49,000	\$49,000
1.01	Traffic control	1	LS	\$24,500	\$24,500
1.02	Construction survey and monumentation	1	LS	\$24,500	\$24,500
<b>GENERAL SUBTOTAL</b>					<b>\$98,000</b>
<b>STREET</b>					
Median Island					
2	Demo/Unclassified excavation	130	CY	\$70	\$9,100
2.01	Stamped decorative concrete	250	SF	\$40	\$10,000
2.02	PCC curb and gutter	1800	LF	\$50	\$90,000
Pedestrian refuge island					
2.03	Demo/Unclassified excavation	25	CY	\$70	\$1,750
2.04	PCC sidewalk	650	SF	\$8	\$5,200
2.05	PCC curb and gutter	410	LF	\$50	\$20,500
2.06	Detectable warning surface	14	EA	\$1,000	\$14,000
Sidewalk					
2.07	PCC curb ramp	19	EA	\$5,000	\$95,000
Curb Extension					
2.08	Demo/Unclassified excavation	75	CY	\$70	\$5,250
2.09	PCC sidewalk	1360	SF	\$8	\$10,880
2.1	Stamped concrete	450	SF	\$40	\$18,000
2.11	PCC curb and gutter	750	LF	\$50	\$37,500
2.12	PCC curb ramp	8	EA	\$5,000	\$40,000
Roundabout					
2.13	Demo/Unclassified excavation	105	CY	\$70	\$7,350
2.14	Mountable stamped concrete with rebar	1330	SF	\$50	\$66,500
2.15	Landscape	1150	SF	\$12	\$13,800
2.16	PCC curb and gutter	200	LF	\$50	\$10,000
2.17	PCC curb	120	LF	\$40	\$4,800
Diverter Island					
2.18	Demo/Unclassified excavation	55	CY	\$70	\$3,850
2.19	Stamped concrete	1370	SF	\$40	\$54,800
2.2	PCC curb and gutter	430	LF	\$50	\$21,500
Asphalt Concrete Pavement					
2.21	Demo/Unclassified excavation	400	CY	\$70	\$28,000
2.22	Asphalt concrete pavement	30	TON	\$200	\$6,000
<b>STREET SUBTOTAL</b>					<b>\$573,780</b>
<b>SIGNING &amp; STRIPING</b>					
3.00	Remove signing/striping	1	LS	\$5,000	\$5,000
3.01	Contintental x-walk	4300	SF	\$2	\$8,600
3.02	Linear x-walk	650	LF	\$2	\$1,300
3.03	Install 12" limit line	50	LF	\$2	\$100



**City:** Garden Grove  
**Project:** Garden Grove Active Downtown  
**Location:** Acacia Parkway from Nelson Street to 9th Street  
**Date:** 1/30/2020

ITEM NO.	ITEM DESCRIPTION	ESTIMATED QUANTITY	UNIT OF MEASURE	UNIT PRICE	ITEM TOTAL
3.04	Install yield line marking	50	LF	\$2	\$100
3.05	Install pavement marking	57	EA	\$500	\$28,500
3.06	Detail 9 - Lane line	125	LF	\$1	\$125
3.07	Detail 22 - Double yellow	2000	LF	\$1	\$2,000
3.08	Detail 24 - Left edgeline	550	LF	\$1	\$550
3.09	Detail 25 - Left edgeline	1750	LF	\$1	\$1,750
3.10	Detail 32 - Two-way left turn lane	260	LF	\$1	\$260
3.11	Detail 38 - Channelizing Line	1500	LF	\$1	\$1,500
3.12	Detail 39 - Bike lane line	9050	LF	\$1	\$9,050
3.13	Detail 39A - Intersection line bike lane line	1000	LF	\$1	\$1,000
3.14	Detail 40 - Lane line extension	125	LF	\$1	\$125
3.15	Install parking T	1500	LF	\$1	\$1,500
3.16	Install 6" diagonal stripe	1000	LF	\$1	\$1,000
3.17	Install signage	1	LS	\$5,000	\$2,500
<b>SIGNING AND STRIPING SUBTOTAL</b>					<b>\$64,960</b>
<b>TOTAL</b>					<b>\$736,740</b>
<b>30% CONTINGENCY</b>					<b>\$221,022</b>
<b>10% DESIGN</b>					<b>\$73,674</b>
<b>15% CONSTRUCTION ENGINEERING</b>					<b>\$110,511</b>
<b>GRAND TOTAL</b>					<b>\$1,141,947</b>

**Creative Crosswalks** - Cost estimate only includes cost for high visibility continental crosswalks. Implementation of creative crosswalks will increase actual cost of Acacia Parkway corridor project. If the City chooses to pursue implementation of engineering infrastructure improvements first, creative crosswalks can be implemented at a later date. Eligibility of creative crosswalks will vary from funding source to funding source. However, formally developed creative crosswalk programs or guidelines (as recommended in the Plan) can help better plan for future maintenance costs and funding sponsorships. Location, artist fees, actual design, materials used, installation, and maintenance will all factor into actual cost. Implementation of creative crosswalks and crosswalk art in other cities have ranged between \$4,000<sup>1</sup> to \$40,000<sup>2</sup> for each crosswalk.

<sup>1</sup> [https://www.oregonlive.com/commuting/2015/06/portland\\_unveils\\_citys\\_first\\_c.html](https://www.oregonlive.com/commuting/2015/06/portland_unveils_citys_first_c.html)

<sup>2</sup> <https://www.presselegram.com/2017/03/29/long-beachs-hip-new-crosswalks-more-like-cross-struts/>



## Preliminary Engineers Cost Estimate

**City:** Garden Grove  
**Project:** Garden Grove Active Downtown  
**Location:** Nelson Street between Garden Grove Boulevard and Stanford Avenue  
**Date:** 1/30/2020

ITEM NO.	ITEM DESCRIPTION	ESTIMATED QUANTITY	UNIT OF MEASURE	UNIT PRICE	ITEM TOTAL
<b>GENERAL</b>					
1	Mobilization	1	LS	\$11,000	\$11,000
1.01	Traffic control	1	LS	\$5,500	\$5,500
1.02	Construction survey and monumentation	1	LS	\$5,500	\$5,500
<b>GENERAL SUBTOTAL</b>					<b>\$22,000</b>
<b>STREET</b>					
Curb Extension					
2	Demo/Unclassified excavation	35	CY	\$70	\$2,450
2.01	PCC sidewalk	900	SF	\$8	\$7,200
2.02	PCC curb and gutter	100	LF	\$50	\$5,000
2.03	PCC curb ramp	3	EA	\$5,000	\$15,000
Median Island					
2.04	Demo/Unclassified excavation	60	CY	\$70	\$4,200
2.05	Stamped decorative concrete	1500	SF	\$40	\$60,000
2.06	PCC curb and gutter	350	LF	\$50	\$17,500
Sidewalk					
2.07	Demo/Unclassified excavation	15	CY	\$70	\$1,050
2.08	PCC sidewalk	400	SF	\$8	\$3,200
2.09	PCC curb ramp	2	EA	\$5,000	\$10,000
Asphalt Concrete Pavement					
2.1	Demo/Unclassified excavation	10	CY	\$70	\$700
2.11	Asphalt concrete Pavement	2	TON	\$200	\$400
<b>STREET SUBTOTAL</b>					<b>\$126,700</b>
<b>TRAFFIC SIGNAL</b>					
Protected left-turn signal heads (NB and SB approaches at Nelson St/Century Blvd & Garden Grove Blvd)					
3	Traffic signal improvements (Furnish and install signal equipment and wiring)	1	LS	\$10,000	\$10,000
<b>TRAFFIC SIGNAL SUBTOTAL</b>					<b>\$10,000</b>
<b>SIGNING &amp; STRIPING</b>					
4.00	Remove striping	1	LS	\$1,000	\$1,000
4.01	Contintental x-walk	350	SF	\$2	\$700
4.02	Install pavement marking	16	EA	\$500	\$8,000
4.03	Detail 9 - Lane line	250	LF	\$1	\$250
4.04	Detail 38 - Channelizing Line	850	LF	\$1	\$850
4.05	Detail 39 - Bike lane line	1850	LF	\$1	\$1,850
4.06	Detail 39A - Intersection line bike lane line	250	LF	\$1	\$250
4.07	Install 6" diagonal white line	500	LF	\$1	\$500
4.08	Install 12" white line	350	LF	\$2	\$700
<b>SIGNING &amp; STRIPING SUBTOTAL</b>					<b>\$14,100</b>
<b>TOTAL</b>					<b>\$172,800</b>
<b>30% CONTINGENCY</b>					<b>\$51,840</b>
<b>10% DESIGN</b>					<b>\$17,280</b>



**City:** Garden Grove  
**Project:** Garden Grove Active Downtown  
**Location:** Nelson Street between Garden Grove Boulevard and Stanford Avenue  
**Date:** 1/30/2020

ITEM NO.	ITEM DESCRIPTION	ESTIMATED QUANTITY	UNIT OF MEASURE	UNIT PRICE	ITEM TOTAL
15% CONSTRUCTION ENGINEERING					\$25,920
GRAND TOTAL					\$267,840





## Preliminary Engineers Cost Estimate

**City:** Garden Grove  
**Project:** Garden Grove Active Downtown  
**Location:** Stanford Avenue from Euclid Street to 9th Street  
**Date:** 1/30/2020

ITEM NO.	ITEM DESCRIPTION	ESTIMATED QUANTITY	UNIT OF MEASURE	UNIT PRICE	ITEM TOTAL
<b>GENERAL</b>					
1	Mobilization	1	LS	\$20,000	\$20,000
1.01	Traffic control	1	LS	\$10,000	\$10,000
1.02	Construction survey and monumentation	1	LS	\$10,000	\$10,000
<b>GENERAL SUBTOTAL</b>					<b>\$40,000</b>
<b>STREET</b>					
Median Island					
2	Demo/Unclassified excavation	40	CY	\$70	\$2,800
2.01	Landscape	1000	SF	\$12	\$12,000
2.02	PCC curb and gutter	250	LF	\$50	\$12,500
Curb Extension					
2.03	Demo/Unclassified excavation	100	CY	\$70	\$7,000
2.04	PCC sidewalk	2600	SF	\$8	\$20,800
2.05	PCC curb and gutter	250	LF	\$50	\$12,500
2.06	PCC curb ramp	5	EA	\$5,000	\$25,000
Asphalt Concrete Pavement					
2.07	Demo/Unclassified excavation	40	CY	\$70	\$2,800
2.08	Asphalt Concrete Pavement	1	TON	\$200	\$200
Sidewalk					
2.09	PCC curb ramp	5	EA	\$5,000	\$25,000
<b>STREET SUBTOTAL</b>					<b>\$120,600</b>
<b>SIGNING &amp; STRIPING</b>					
3.00	Remove signing/stripping	1	LS	\$2,500	\$2,500
3.01	Contintental x-walk	2850	SF	\$2	\$5,700
3.02	Install pavement marking	16	EA	\$500	\$8,000
3.03	Detail 39 - Bike lane line	5200	LF	\$1	\$5,200
3.04	Detail 39A - Intersection line bike lane line	400	LF	\$1	\$400
3.05	Install 6" diagonal stripe	150	LF	\$1	\$150
3.06	Install signage	1	LS	\$2,500	\$2,500
3.07	Install RRFB system	2	LS	\$60,000	\$120,000
<b>SIGNING AND STRIPING SUBTOTAL</b>					<b>\$144,450</b>
<b>TOTAL</b>					<b>\$305,050</b>
<b>30% CONTINGENCY</b>					<b>\$91,515</b>
<b>10% DESIGN</b>					<b>\$30,505</b>
<b>15% CONSTRUCTION ENGINEERING</b>					<b>\$45,758</b>
<b>GRAND TOTAL</b>					<b>\$472,828</b>



## Preliminary Engineers Cost Estimate

**City:** Garden Grove  
**Project:** Garden Grove Active Downtown  
**Location:** 9th Street from College Avenue to Garden Grove Boulevard  
**Date:** 1/30/2020

ITEM NO.	ITEM DESCRIPTION	ESTIMATED QUANTITY	UNIT OF MEASURE	UNIT PRICE	ITEM TOTAL
<b>GENERAL</b>					
1	Mobilization	1	LS	\$15,000	\$15,000
1.01	Traffic control	1	LS	\$7,500	\$7,500
1.02	Construction survey and monumentation	1	LS	\$7,500	\$7,500
<b>GENERAL SUBTOTAL</b>					<b>\$30,000</b>
<b>STREET</b>					
Curb Extension					
2	Demo/Unclassified excavation	320	CY	\$70	\$22,400
2.01	PCC sidewalk	8610	SF	\$8	\$68,880
2.02	PCC curb and gutter	750	LF	\$50	\$37,500
2.03	PCC curb ramp	11	EA	\$5,000	\$55,000
2.04	Asphalt concrete pavement	5	TON	\$200	\$1,000
<b>STREET SUBTOTAL</b>					<b>\$184,780</b>
<b>SIGNING &amp; STRIPING</b>					
3.00	Remove signing/stripping	1	LS	\$2,500	\$2,500
3.01	Contintental x-walk	1200	SF	\$2	\$2,400
3.02	Install yield line marking	24	LF	\$2	\$48
3.03	Install pavement marking	1	EA	\$500	\$500
3.04	Edgeline stripe	4300	LF	\$1	\$4,300
3.05	Detail 9 - Lane line	1100	LF	\$1	\$1,100
3.06	Detail 22 - Double yellow	650	LF	\$1	\$650
3.07	Install signage	1	LS	\$2,500	\$2,500
<b>SIGNING AND STRIPING SUBTOTAL</b>					<b>\$13,998</b>
<b>TOTAL</b>					<b>\$228,778</b>
<b>30% CONTINGENCY</b>					<b>\$68,633</b>
<b>10% DESIGN</b>					<b>\$22,878</b>
<b>15% CONSTRUCTION ENGINEERING</b>					<b>\$34,317</b>
<b>GRAND TOTAL</b>					<b>\$354,606</b>



## Preliminary Engineers Cost Estimate

**City:** Garden Grove  
**Project:** Garden Grove Active Downtown  
**Location:** Euclid Street from Stanford Avenue to Acacia Parkway  
**Date:** 1/30/2020

ITEM NO.	ITEM DESCRIPTION	ESTIMATED QUANTITY	UNIT OF MEASURE	UNIT PRICE	ITEM TOTAL
<b>GENERAL</b>					
1	Mobilization	1	LS	\$9,000	\$9,000
1.01	Traffic control	1	LS	\$4,500	\$4,500
1.02	Construction survey and monumentation	1	LS	\$4,500	\$4,500
<b>GENERAL SUBTOTAL</b>					<b>\$18,000</b>
<b>STREET</b>					
Shared Path					
2	Demo/Unclassified excavation	275	CY	\$70	\$19,250
2.01	PCC curb and gutter	500	LF	\$50	\$25,000
2.02	PCC sidewalk	7400	SF	\$8	\$59,200
2.03	PCC curb ramp	1	EA	\$5,000	\$5,000
2.04	Asphalt concrete pavement	5	TON	\$200	\$1,000
<b>STREET SUBTOTAL</b>					<b>\$109,450</b>
<b>SIGNING &amp; STRIPING</b>					
3.00	Remove signing/striping	1	LS	\$1,000	\$1,000
3.01	Contintental x-walk	1800	SF	\$2	\$3,600
3.02	Install signage	1	LS	\$2,500	\$2,500
<b>SIGNING AND STRIPING SUBTOTAL</b>					<b>\$7,100</b>
<b>TOTAL</b>					<b>\$134,550</b>
<b>30% CONTINGENCY</b>					<b>\$40,365</b>
<b>10% DESIGN</b>					<b>\$13,455</b>
<b>15% CONSTRUCTION ENGINEERING</b>					<b>\$20,183</b>
<b>GRAND TOTAL</b>					<b>\$208,553</b>



## Preliminary Engineers Cost Estimate

**City:** Garden Grove  
**Project:** Garden Grove Active Downtown  
**Location:** Garden Grove Boulevard between Nelson Street and 9th Street  
**Date:** 1/30/2020

ITEM NO.	ITEM DESCRIPTION	ESTIMATED QUANTITY	UNIT OF MEASURE	UNIT PRICE	ITEM TOTAL
<b>GENERAL</b>					
1	Mobilization	1	LS	\$1,500	\$1,500
1.01	Traffic control	1	LS	\$750	\$750
1.02	Construction survey and monumentation	1	LS	\$750	\$750
<b>GENERAL SUBTOTAL</b>					<b>\$3,000</b>
<b>STREET</b>					
Median Island					
2	Demo/Unclassified excavation	10	CY	\$70	\$700
2.01	Stamped decorative concrete	125	SF	\$40	\$5,000
2.02	PCC curb and gutter	100	LF	\$50	\$5,000
2.03	Asphalt concrete pavement	1	TON	\$200	\$200
<b>STREET SUBTOTAL</b>					<b>\$10,900</b>
<b>SIGNING &amp; STRIPING</b>					
3.00	Remove striping	1	LS	\$1,000	\$1,000
3.01	Contintental x-walk	2250	SF	\$2	\$4,500
3.02	Linear x-walk	2100	LF	\$2	\$4,200
<b>SIGNING &amp; STRIPING SUBTOTAL</b>					<b>\$9,700</b>
<b>TOTAL</b>					<b>\$23,600</b>
<b>30% CONTINGENCY</b>					<b>\$7,080</b>
<b>10% DESIGN</b>					<b>\$2,360</b>
<b>15% CONSTRUCTION ENGINEERING</b>					<b>\$3,540</b>
<b>GRAND TOTAL</b>					<b>\$36,580</b>



## Preliminary Engineers Cost Estimate

**City:** Garden Grove  
**Project:** Garden Grove Active Downtown  
**Location:** Main Street at Stanford Avenue  
**Date:** 1/30/2020

ITEM NO.	ITEM DESCRIPTION	ESTIMATED QUANTITY	UNIT OF MEASURE	UNIT PRICE	ITEM TOTAL
<b>GENERAL</b>					
1	Mobilization	1	LS	\$6,500	\$6,500
1.01	Traffic control	1	LS	\$3,250	\$3,250
1.02	Construction survey and monumentation	1	LS	\$3,250	\$3,250
<b>GENERAL SUBTOTAL</b>					<b>\$13,000</b>
<b>STREET</b>					
Curb Extension					
2	Demo/Unclassified excavation	160	CY	\$70	\$11,200
2.01	PCC Sidewalk	3800	SF	\$8	\$30,400
2.02	PCC curb and gutter	250	LF	\$50	\$12,500
2.03	PCC curb ramp	5	EA	\$5,000	\$25,000
2.04	Asphalt concrete pavement	2	TON	\$200	\$400
<b>STREET SUBTOTAL</b>					<b>\$79,500</b>
<b>SIGNING &amp; STRIPING</b>					
3.00	Remove signing/striping	1	LS	\$1,000	\$1,000
3.01	Contintental x-walk	770	SF	\$2	\$1,540
3.02	Install signage	1	LS	\$2,500	\$2,500
<b>SIGNING AND STRIPING SUBTOTAL</b>					<b>\$5,040</b>
<b>TOTAL</b>					<b>\$97,540</b>
<b>30% CONTINGENCY</b>					<b>\$29,262</b>
<b>10% DESIGN</b>					<b>\$9,754</b>
<b>15% CONSTRUCTION ENGINEERING</b>					<b>\$14,631</b>
<b>GRAND TOTAL</b>					<b>\$151,187</b>





## Preliminary Engineers Cost Estimate

**City:** Garden Grove  
**Project:** Garden Grove Active Downtown  
**Location:** 7th St from Acacia Parkway to Garden Grove Blvd  
**Date:** 1/30/2020

ITEM NO.	ITEM DESCRIPTION	ESTIMATED QUANTITY	UNIT OF MEASURE	UNIT PRICE	ITEM TOTAL
<b>GENERAL</b>					
1	Mobilization	1	LS	\$6,000	\$6,000
1.01	Traffic control	1	LS	\$3,000	\$3,000
1.02	Construction survey and monumentation	1	LS	\$3,000	\$3,000
<b>GENERAL SUBTOTAL</b>					<b>\$12,000</b>
<b>STREET</b>					
Sidewalk					
2	Demo/Unclassified excavation	180	CY	\$70	\$12,600
2.01	PCC curb and gutter and slot patch	650	LF	\$55	\$35,750
2.02	PCC Sidewalk	3500	SF	\$8	\$28,000
2.03	PCC curb ramp	1	EA	\$5,000	\$5,000
<b>STREET SUBTOTAL</b>					<b>\$81,350</b>
<b>SIGNING &amp; STRIPING</b>					
3	Remove signage (stop sign)	1	LS	\$1,000	\$1,000
3.01	Install signage (stop sign)	1	LS	\$1,000	\$1,000
<b>SIGNING &amp; STRIPING SUBTOTAL</b>					<b>\$2,000</b>
<b>TOTAL</b>					<b>\$95,350</b>
<b>30% CONTINGENCY</b>					<b>\$28,605</b>
<b>10% DESIGN</b>					<b>\$9,535</b>
<b>15% CONSTRUCTION ENGINEERING</b>					<b>\$14,303</b>
<b>GRAND TOTAL</b>					<b>\$147,793</b>



## Preliminary Engineers Cost Estimate

**City:** Garden Grove  
**Project:** Garden Grove Active Downtown  
**Location:** 8th Street from Acacia Parkway to Garden Grove Boulevard  
**Date:** 1/30/2020

ITEM NO.	ITEM DESCRIPTION	ESTIMATED QUANTITY	UNIT OF MEASURE	UNIT PRICE	ITEM TOTAL
<b>GENERAL</b>					
1	Mobilization	1	LS	\$3,000	\$3,000
1.01	Traffic control	1	LS	\$1,500	\$1,500
1.02	Construction survey and monumentation	1	LS	\$1,500	\$1,500
<b>GENERAL SUBTOTAL</b>					<b>\$6,000</b>
<b>STREET</b>					
Sidewalk					
2	Demo/Unclassified excavation	90	CY	\$70	\$6,300
2.01	PCC curb and gutter and slot patch	350	LF	\$55	\$19,250
2.02	PCC Sidewalk	1650	SF	\$8	\$13,200
<b>STREET SUBTOTAL</b>					<b>\$38,750</b>
<b>TOTAL</b>					<b>\$44,750</b>
<b>30% CONTINGENCY</b>					<b>\$13,425</b>
<b>10% DESIGN</b>					<b>\$4,475</b>
<b>15% CONSTRUCTION ENGINEERING</b>					<b>\$6,713</b>
<b>GRAND TOTAL</b>					<b>\$69,363</b>



## Preliminary Engineers Cost Estimate

**City:** Garden Grove  
**Project:** Garden Grove Active Downtown  
**Location:** Grove Avenue between Acacia Parkway and Garden Grove Boulevard  
**Date:** 1/30/2020

ITEM NO.	ITEM DESCRIPTION	ESTIMATED QUANTITY	UNIT OF MEASURE	UNIT PRICE	ITEM TOTAL
<b>GENERAL</b>					
1	Mobilization	1	LS	\$5,000	\$5,000
1.01	Traffic control	1	LS	\$2,500	\$2,500
1.02	Construction survey and monumentation	1	LS	\$2,500	\$2,500
<b>GENERAL SUBTOTAL</b>					<b>\$10,000</b>
<b>STREET</b>					
Sidewalk					
2	Demo/Unclassified excavation	100	CY	\$70	\$7,000
2.01	PCC curb and gutter	700	LF	\$50	\$35,000
2.02	PCC sidewalk	2550	SF	\$8	\$20,400
2.03	PCC curb ramp	2	EA	\$5,000	\$10,000
2.04	Asphalt concrete pavement	5	TON	\$200	\$1,000
<b>STREET SUBTOTAL</b>					<b>\$73,400</b>
<b>TOTAL</b>					
					<b>\$83,400</b>
<b>30% CONTINGENCY</b>					<b>\$25,020</b>
<b>10% DESIGN</b>					<b>\$8,340</b>
<b>15% CONSTRUCTION ENGINEERING</b>					<b>\$12,510</b>
<b>GRAND TOTAL</b>					<b>\$129,270</b>