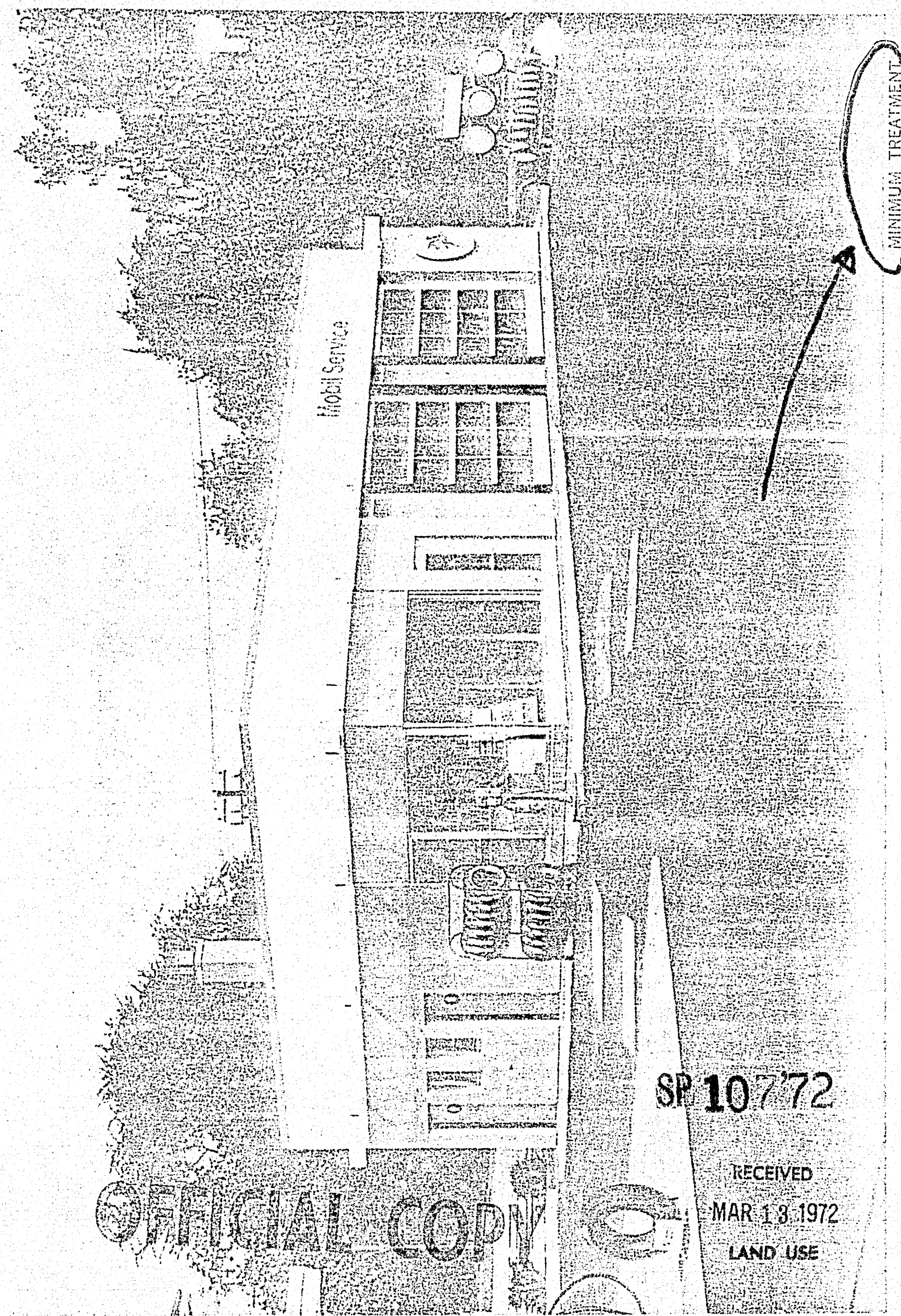


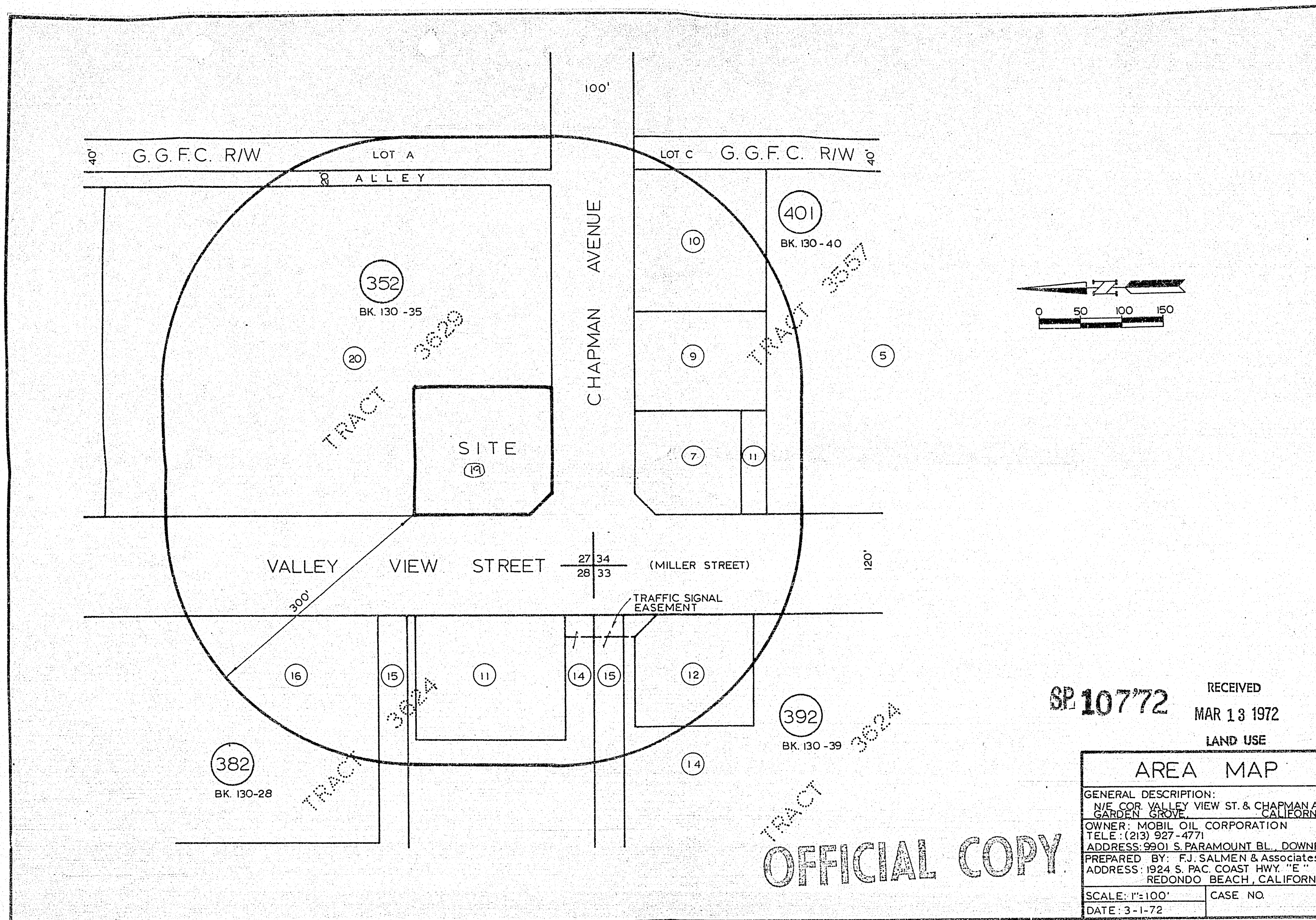
S.P 107-72



SP 10772

RECEIVED
MAR 13 1972
LAND USE

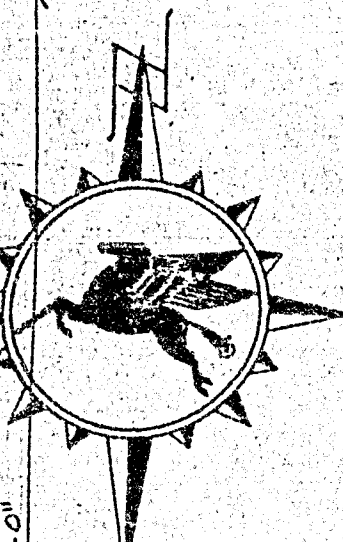
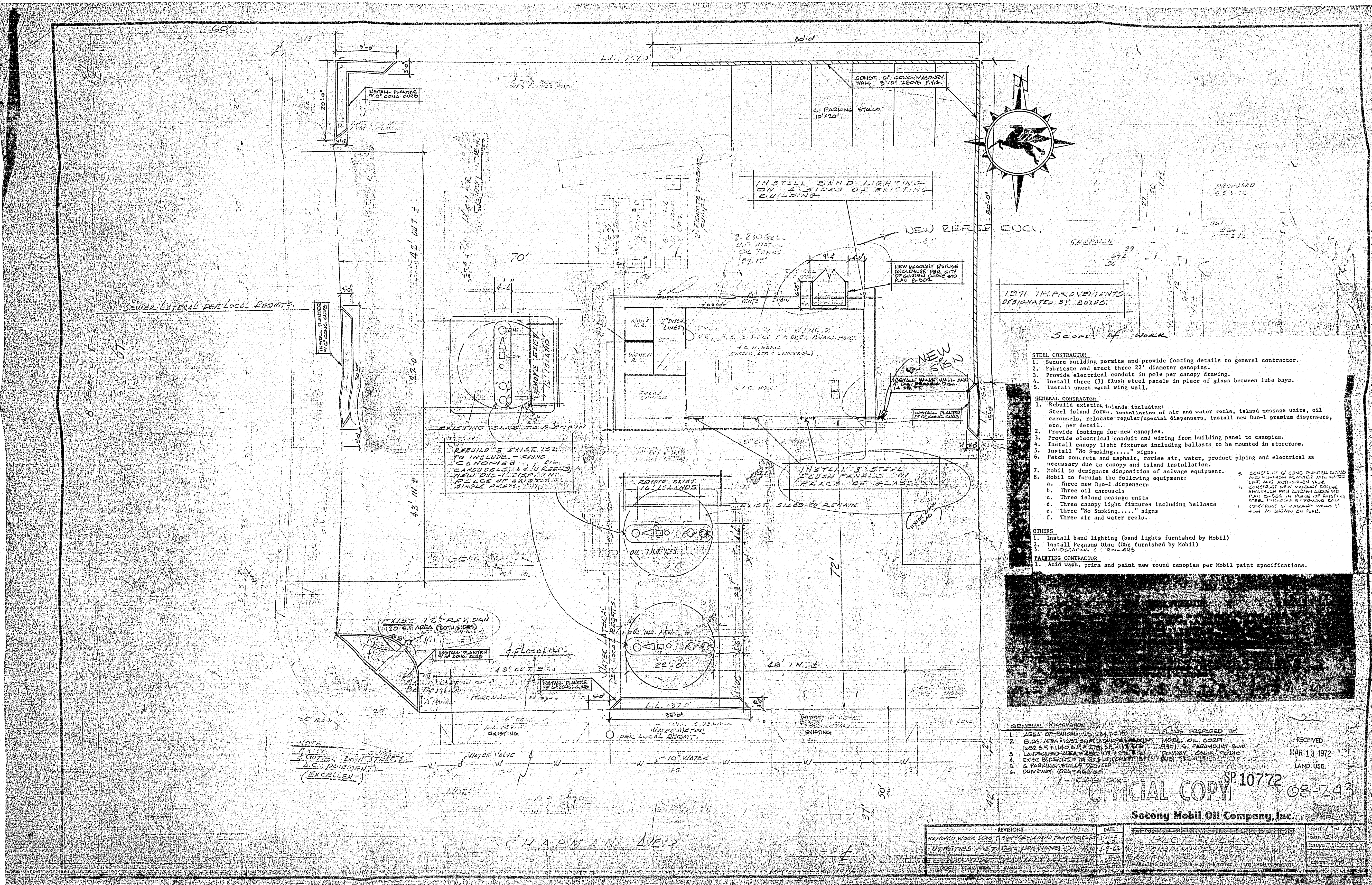
PAGE 17A



SP 10772 RECEIVED
MAR 13 1972
LAND USE

AREA MAP	
GENERAL DESCRIPTION: N/E COR VALLEY VIEW ST. & CHAPMAN AVE GARDEN GROVE CALIFORNIA	
OWNER: MOBIL OIL CORPORATION TELE: (213) 927-4771	
ADDRESS: 9901 S. PARAMOUNT BL., DOWNEY	
PREPARED BY: F.J. SALMEN & Associates ADDRESS: 1924 S. PAC. COAST HWY. "E" REDONDO BEACH, CALIFORNIA	
SCALE: 1"=100'	CASE NO.
DATE: 3-1-72	

OFFICIAL COPY



1971 IMPROVEMENTS DESIGNATED BY BOXES

Scope of Work

- STEEL CONTRACTOR**
1. Secure building permits and provide footing details to general contractor.
 2. Fabricate and erect three 22" diameter canopies.
 3. Provide electrical conduit in pole per canopy drawing.
 4. Install three (3) flush steel panels in place of glass between lube bays.
 5. Install sheet metal wing wall.
- GENERAL CONTRACTOR**
1. Rebuild existing islands including: Steel island forms, installation of air and water reels, island message units, oil carousels, relocate regular/special dispensers, install new Duo-1 prenum dispensers, etc. per detail.
 2. Provide footings for new canopies.
 3. Provide electrical conduit and wiring from building panel to canopies.
 4. Install canopy light fixtures including ballasts to be mounted in storeroom.
 5. Install "No Smoking..." signs.
 6. Patch concrete and asphalt, revise air, water, product piping and electrical as necessary due to canopy and island installation.
 7. Mobil to designate disposition of salvage equipment.
 8. Mobil to furnish the following equipment:
 - a. Three new Duo-1 dispensers
 - b. Three oil carousels
 - c. Three island message units
 - d. Three canopy light fixtures including ballasts
 - e. Three "No Smoking..." signs
 - f. Three air and water reels.

- OTHERS**
1. Install band lighting (band lights furnished by Mobil)
 2. Install Pegasus Disc (Disc furnished by Mobil)
- PAINTING CONTRACTOR**
1. Acid wash, prime and paint new round canopies per Mobil paint specifications.

GENERAL INFORMATION

1. AREA OF PARCEL: 75,000 SQ. FT.
2. BLDG. AREA: 11,000 SQ. FT.
3. LANDSCAPED AREA: 10,000 SQ. FT.
4. EXIST. BUILDING: 11,000 SQ. FT.
5. PARKING STALLS: 10
6. DRIVEWAY: 120' x 40'

DESIGNED BY: MOBIL OIL CORP.

PREPARED BY: CHAPMAN & ASSOCIATES, INC.

DATE: 10/15/71

SCALE: 1" = 10'

RECEIVED MAR 13 1972 LAND USE

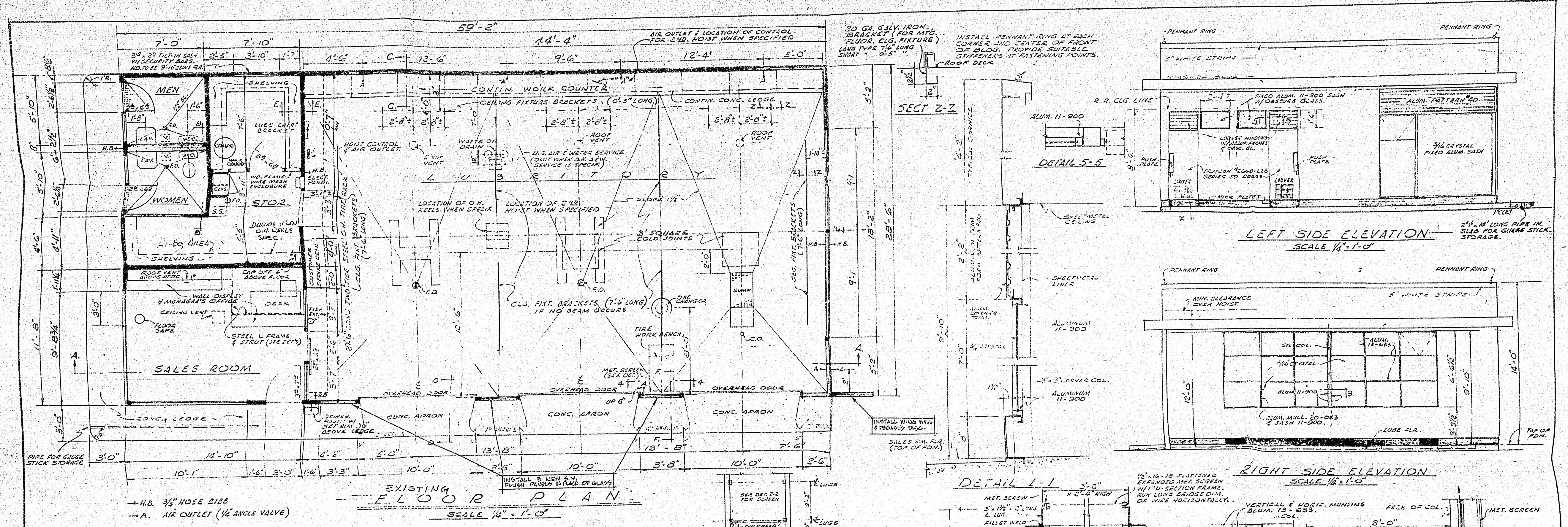
OFFICIAL COPY

SP 10772 08-243

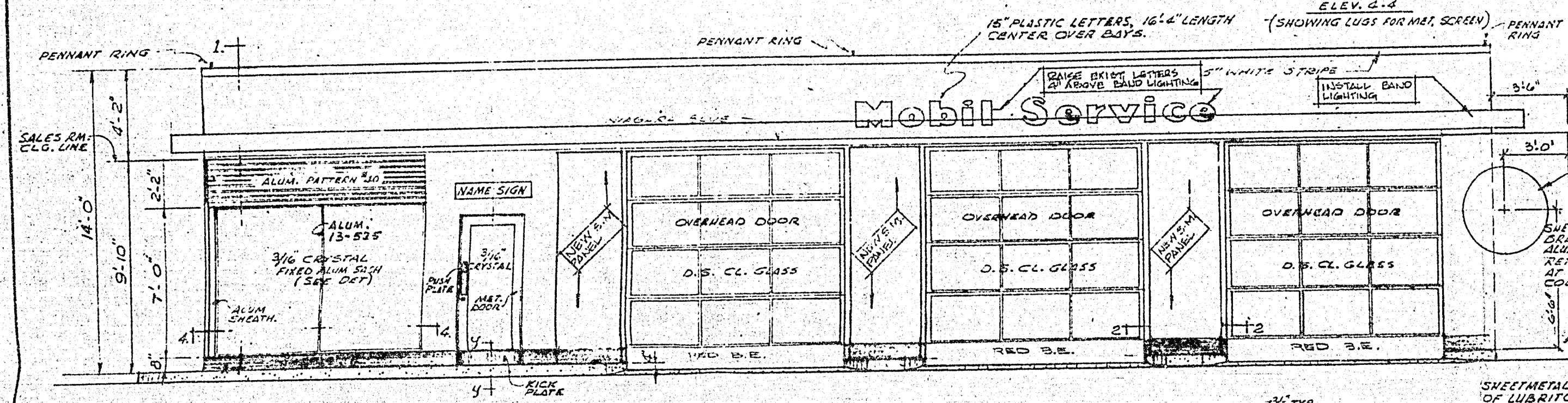
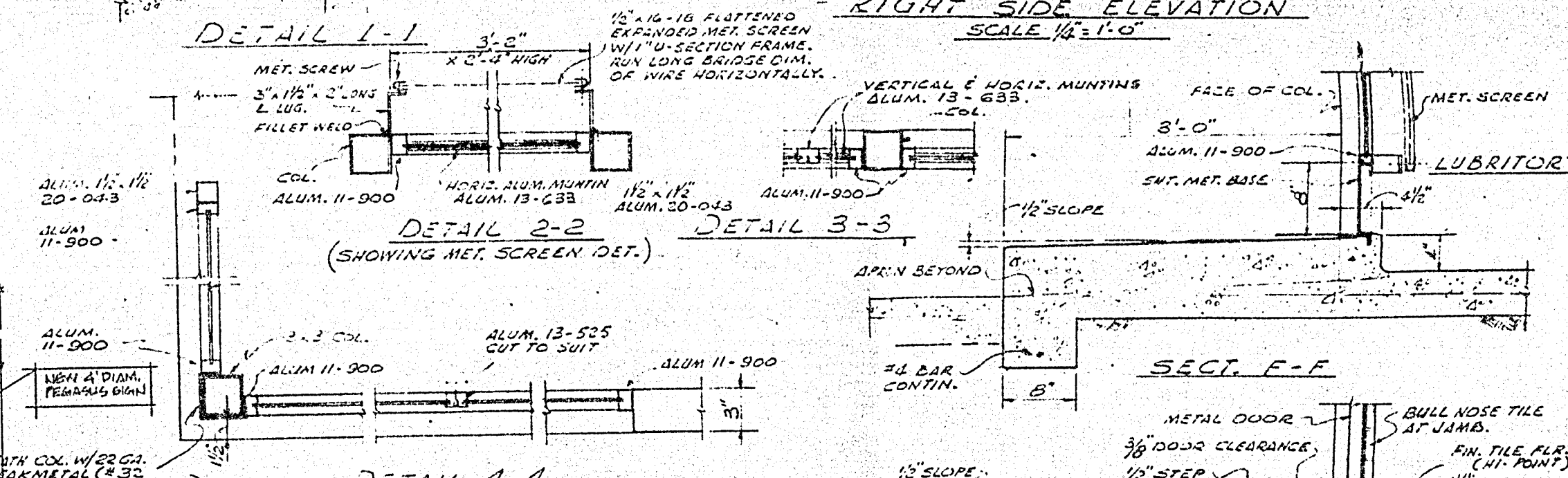
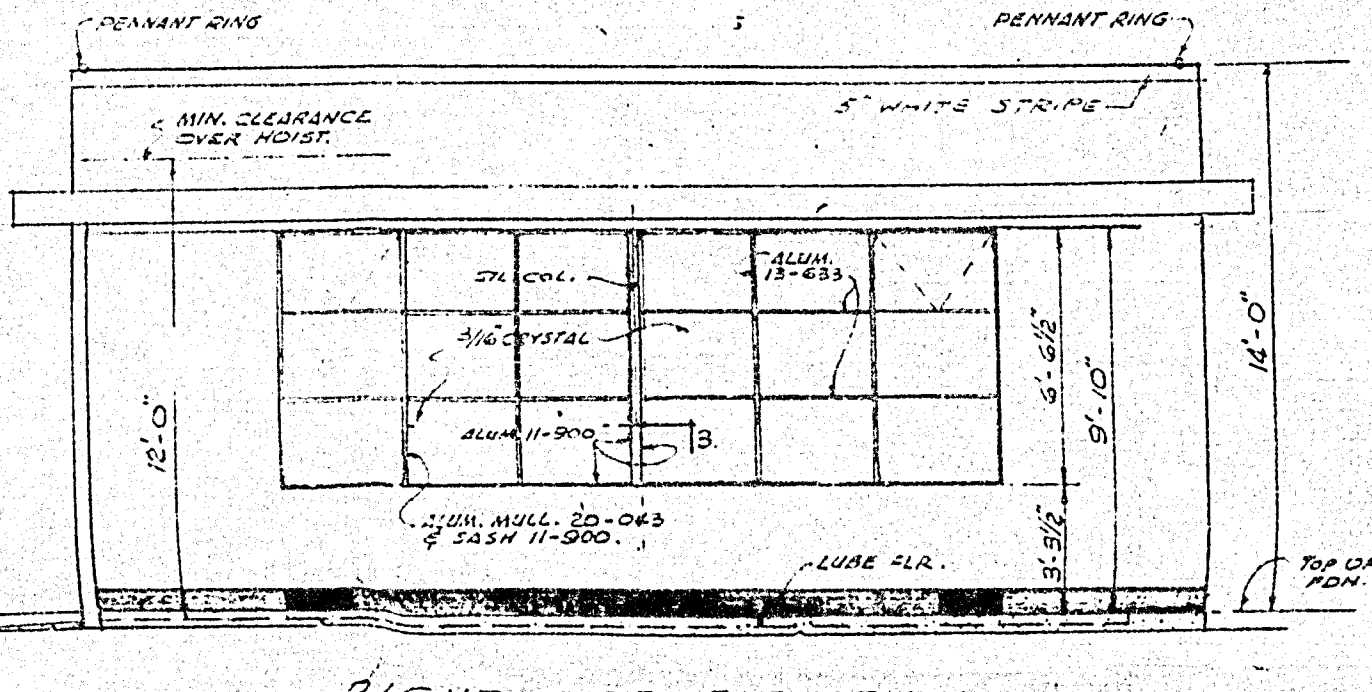
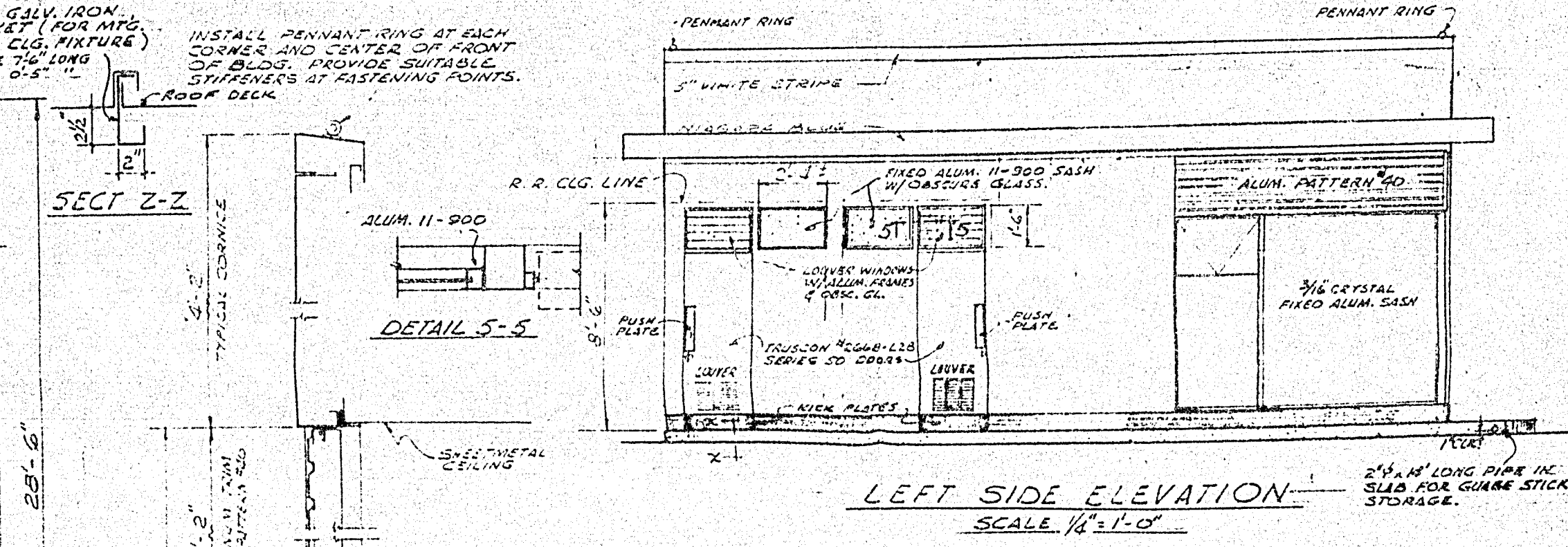
Socony Mobil Oil Company, Inc.

REVISIONS	DATE	GENERAL SUPERVISOR	SCALE
1. REVISED WORK LOG	10/15/71		1" = 10'
2. UPGRADES TO ST. DATA PER DRAWING	10/20/71		1" = 10'
3. GENERAL SUPERVISOR			
4. DATE			
5. SCALE			

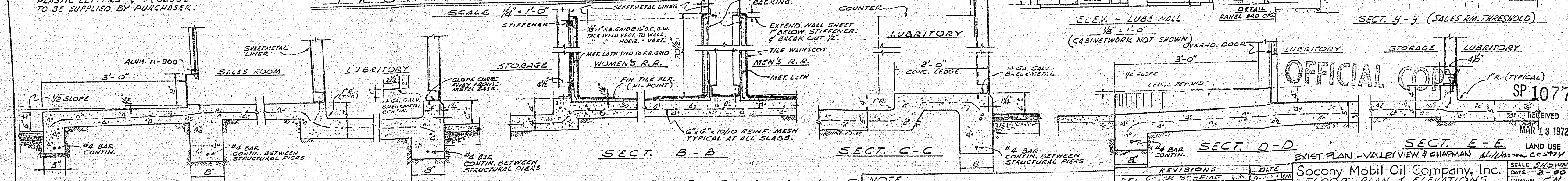
CHAPMAN AVE.



+ H.B. 3/4" HOSE BIBB
 - A. AIR OUTLET (1/2" ANGLE VALVE)



NOTE:
 PLASTIC LETTERS & PEGASUS
 TO BE SUPPLIED BY PURCHASER.



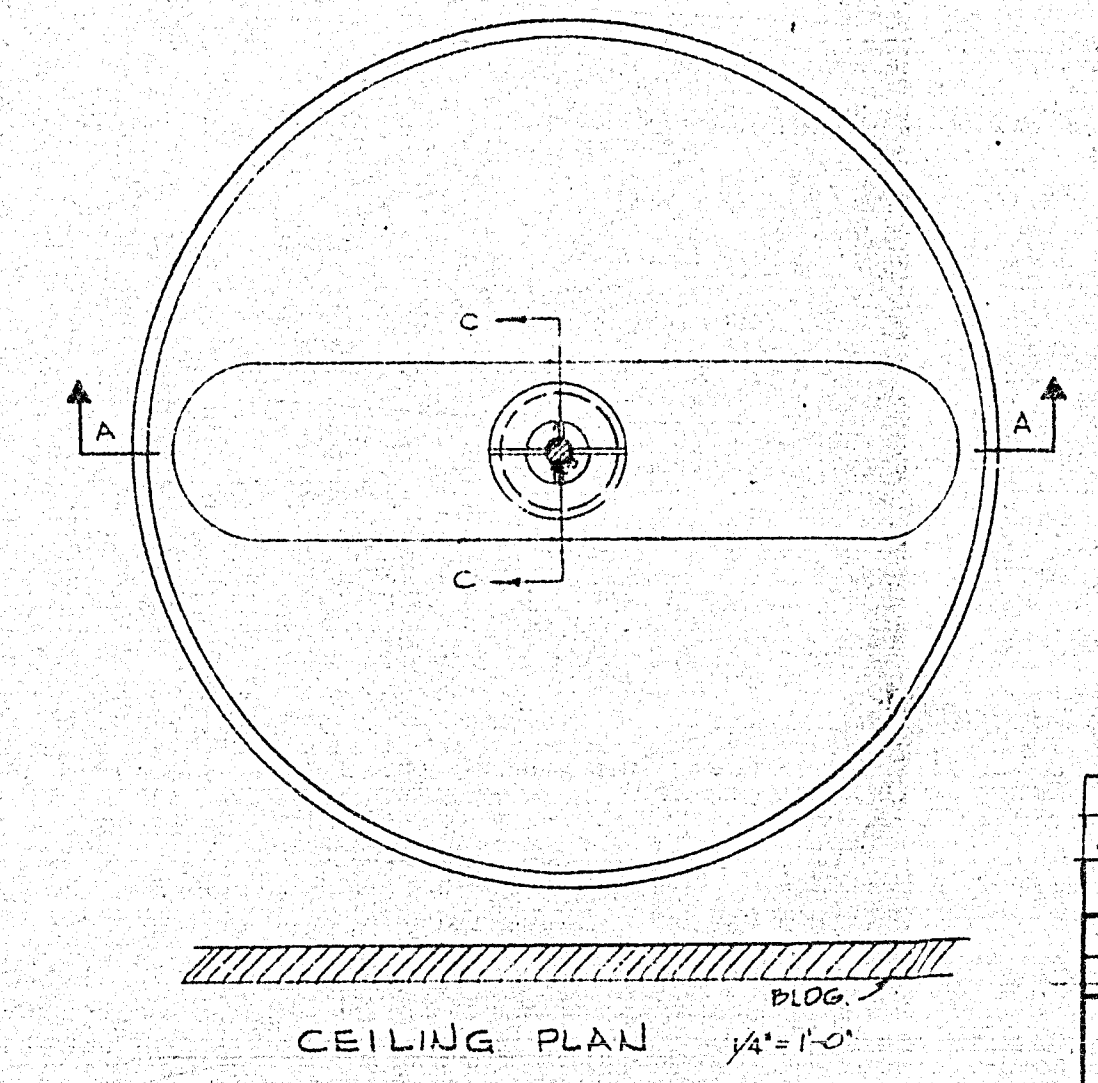
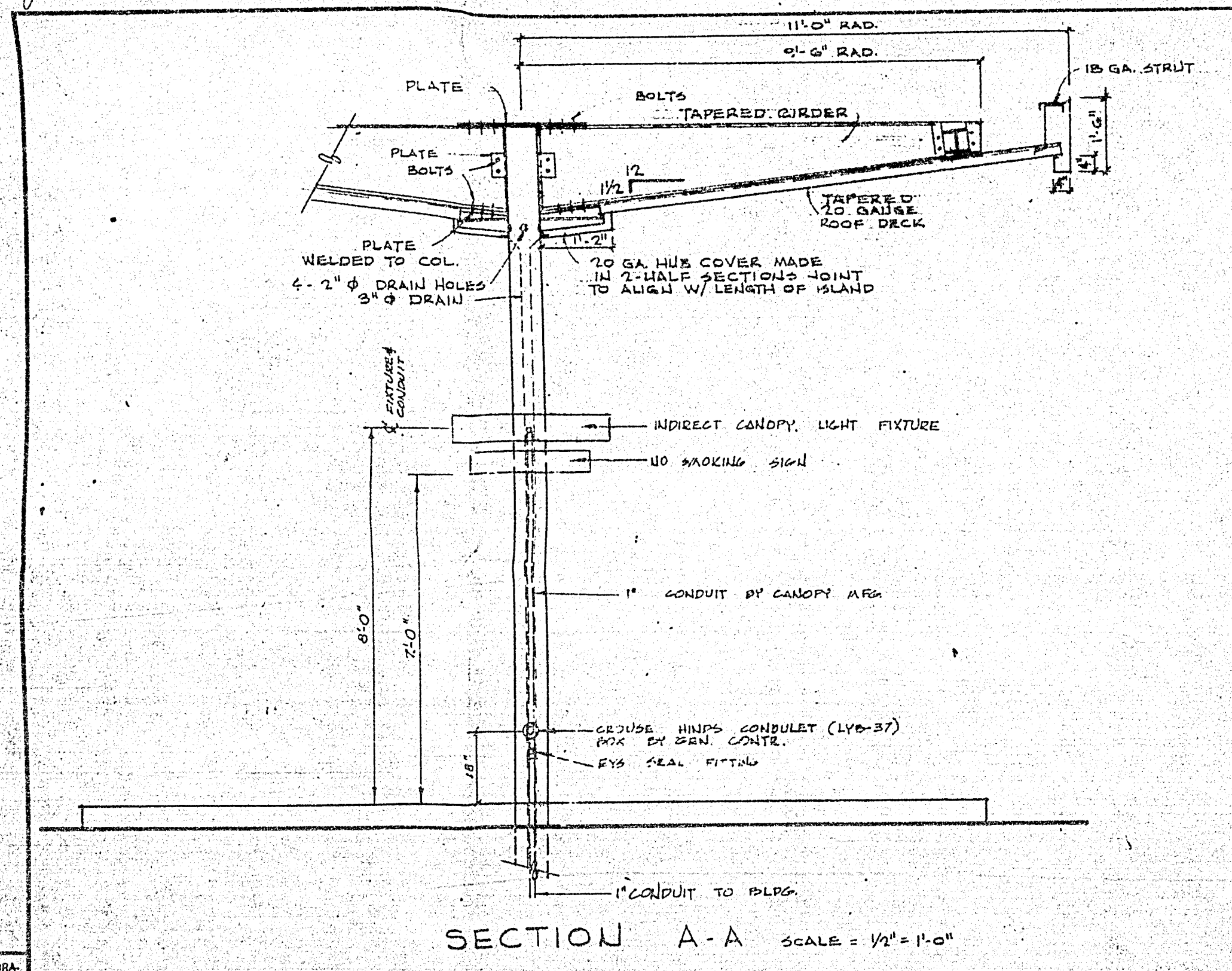
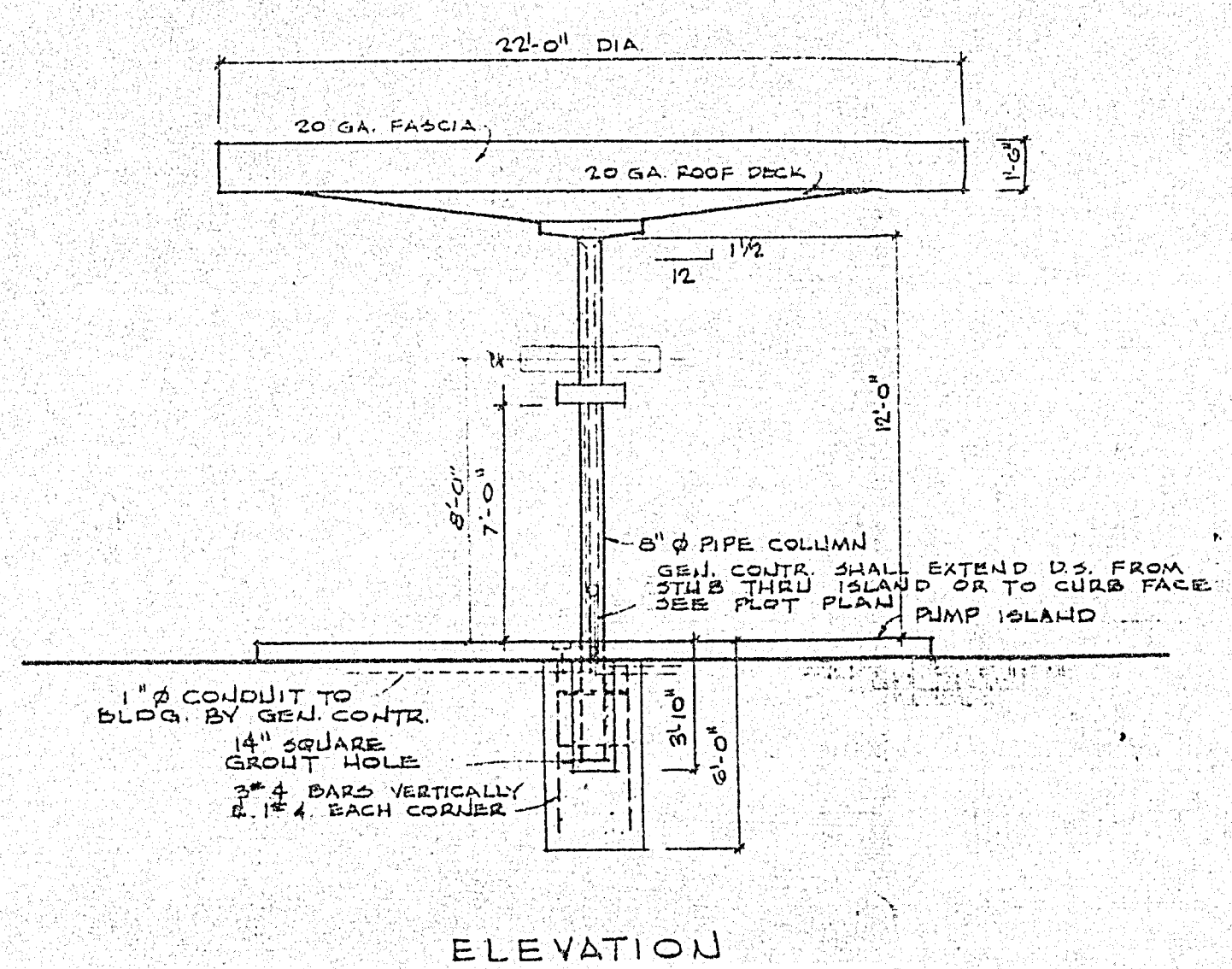
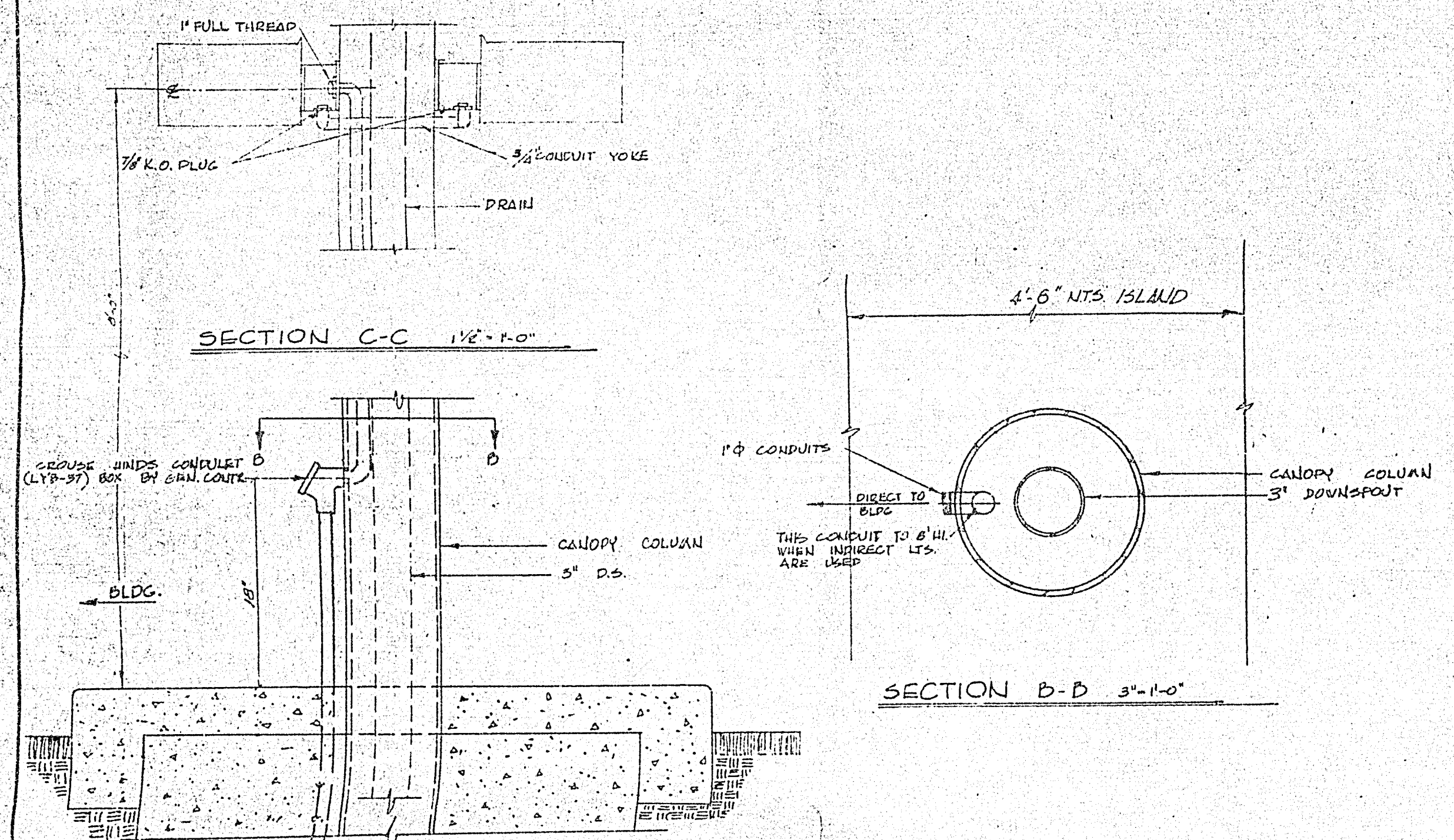
NOTE:
 REFER TO PLOT PLAN FOR EXCEPTIONS
 TO THIS STANDARD DWG. SUCH AS FIRE
 WALLS, PORCELAIN ENAMEL FACINGS, ETC.

REVISIONS	DATE	BY	CHKD.
1. REMOVED LOUVER	11-11-54	W. J. B.	J. L. B.
2. ALUM. BASH & CLG. BRACKET	11-11-54	W. J. B.	J. L. B.
3. CHANGED TO STANDARD DWG.	11-11-54	W. J. B.	J. L. B.

Socony Mobil Oil Company, Inc.
 FLOOR PLAN & ELEVATIONS
 TYPE 3-45 (UNGLAZED) W/ (R.R.) NO. 1
 MARKETING ENG. 2415 EAST 87th STREET LOS ANGELES 58, CALIF.

RECEIVED
 MAR 18 1972
 LAND USE
 SCALE SHOWN
 DATE 2-20
 DRAWN BY
 CHECKED BY
 SD-16622
 (L.H.)

NEW
KJD



NOTE:
GEN. CONTR. TO INSTALL CANOPY LIGHT INDIRECT LIT.

3	10-6-70	Y.C.	GEN. REV.			
2	6-25-70	Y.C.	INDIRECT LIGHTING			
1	6-22-69	F.S.	CONDULET BOX			
NO.	DATE	BY	DESCRIPTION	CHK'D	SEAL	APP'D

MOBIL OIL CORPORATION
WEST COAST DIVISION MARKETING DEPARTMENT
LOS ANGELES, CALIFORNIA

OFFICIAL COPY 10772 RECEIVED
22' DIA. CANOPY MAR 18 1972
LAND USE

COLUMN FOOTING NOTE:
FOOTINGS SHOWN FOR BID PURPOSES ONLY. STEEL FABRICATOR SHALL DESIGN COLUMN FOOTINGS (INCLUDING REINFORCING STEEL) AND WILL FURNISH DESIGN DWGS. TO GENERAL CONTRACTOR WHO WILL CONSTRUCT FTGS.

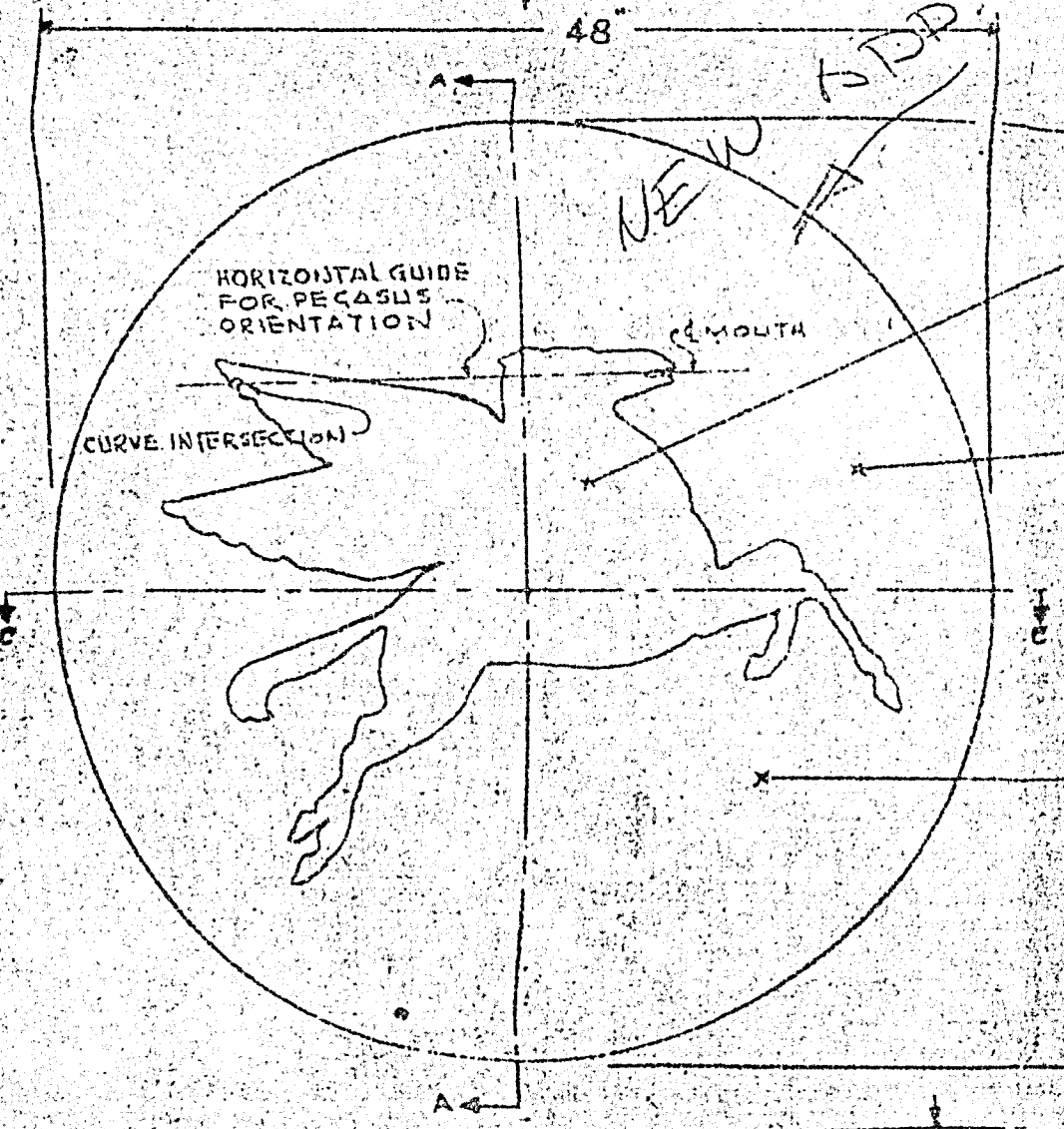
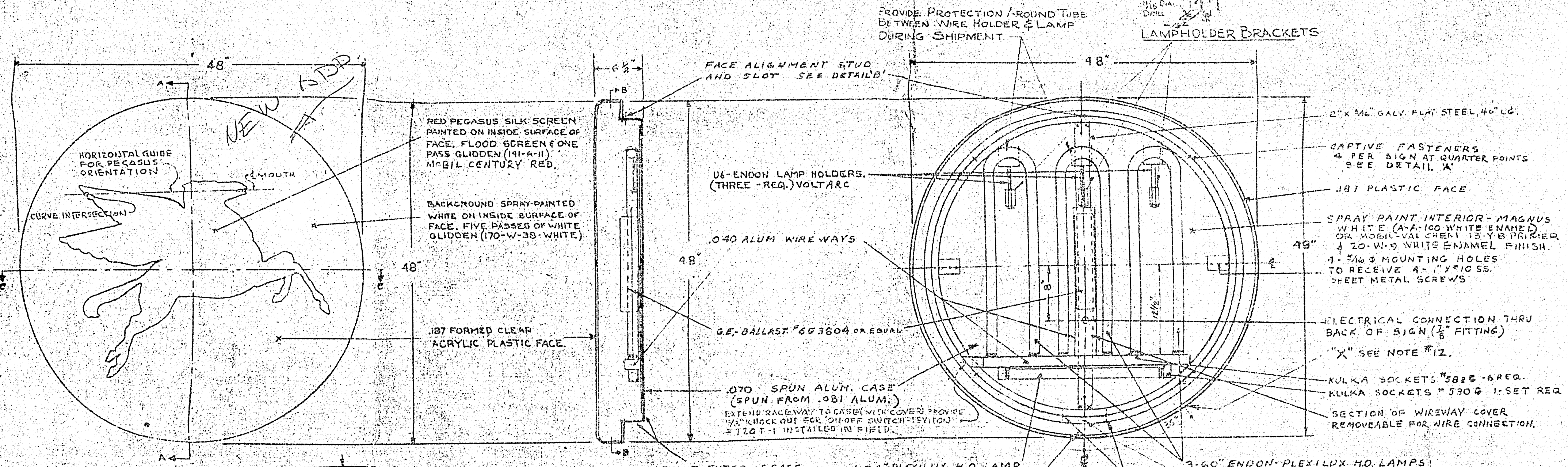
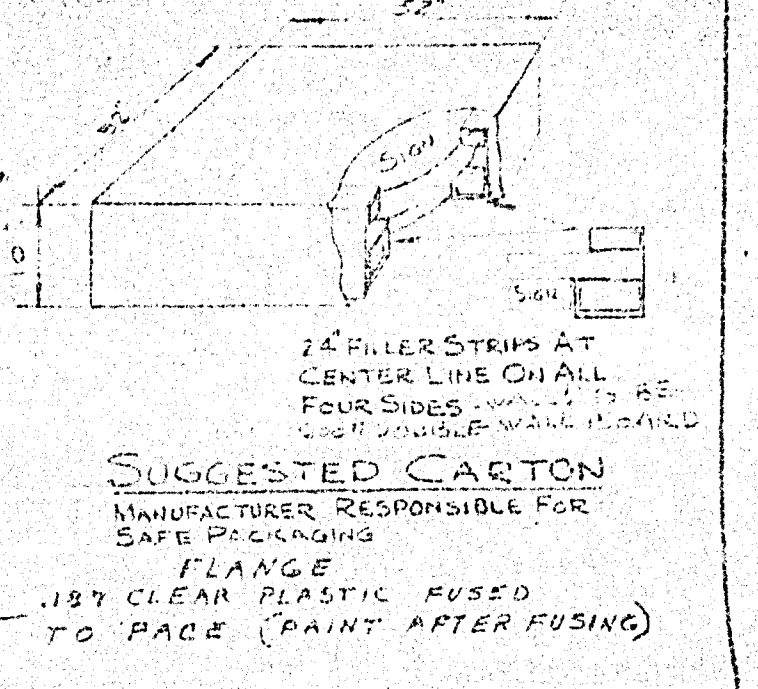
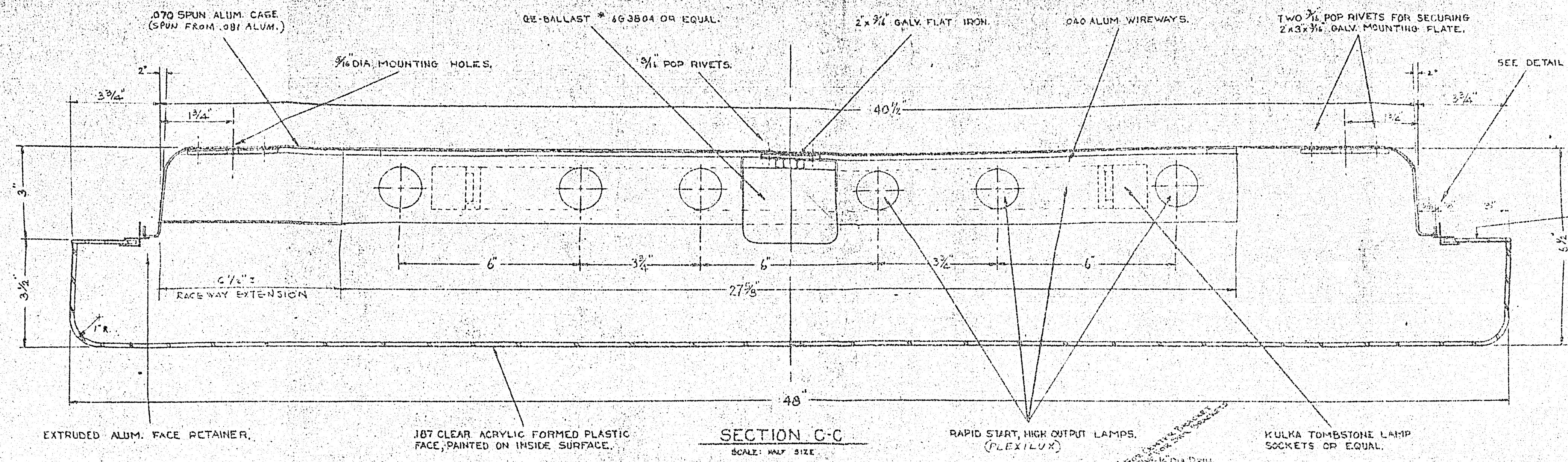
DRAWN BY: JEA CHECKED BY: SCALE: 1/4" = 1'-0"
DATE STARTED: DATE COMPLETED: 3-15-71

THIS DRAWING IS NOT TO BE USED FOR CONSTRUCTION OR FOR ORDERING MATERIAL UNLESS CERTIFIED AND DATED

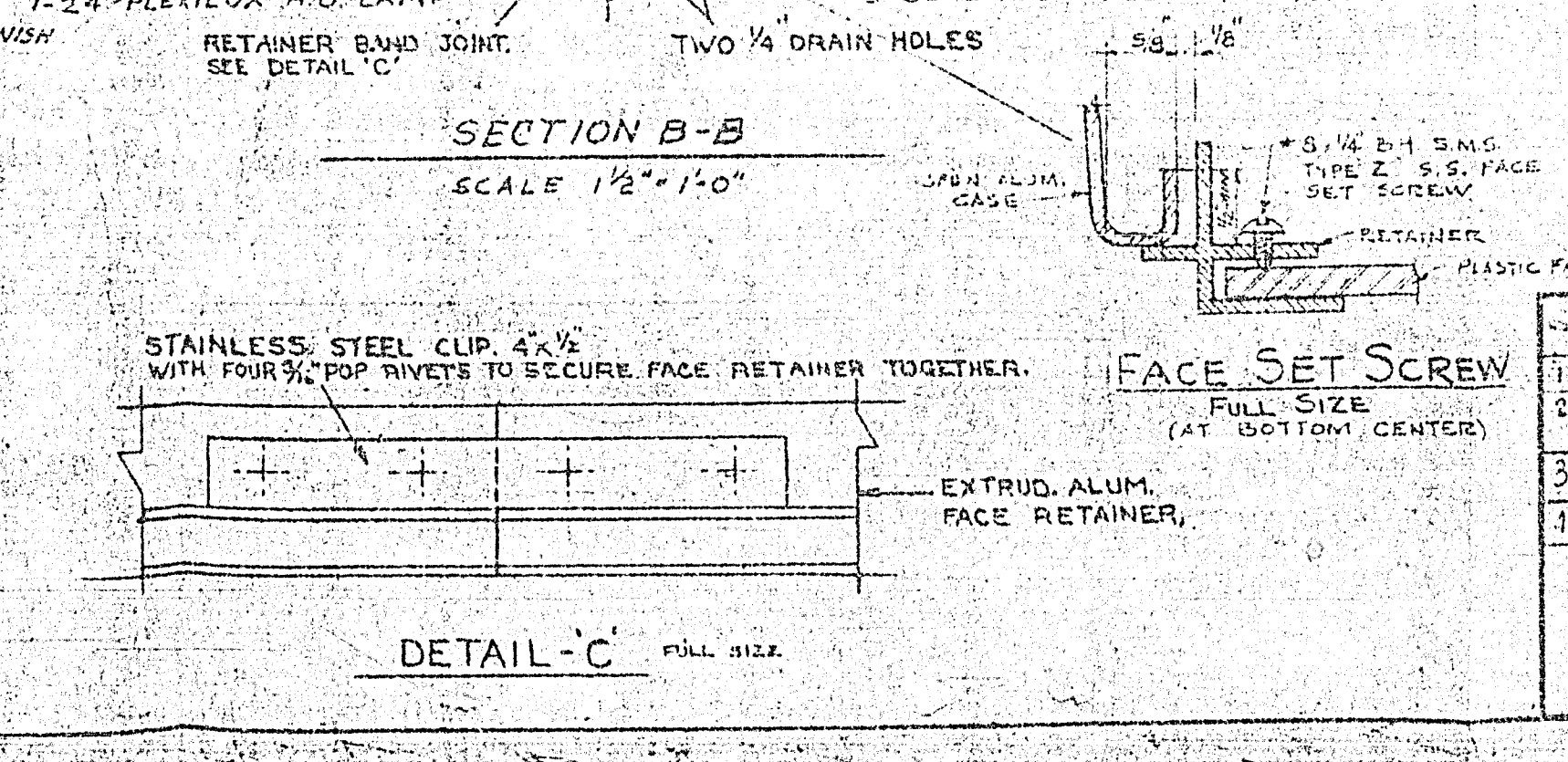
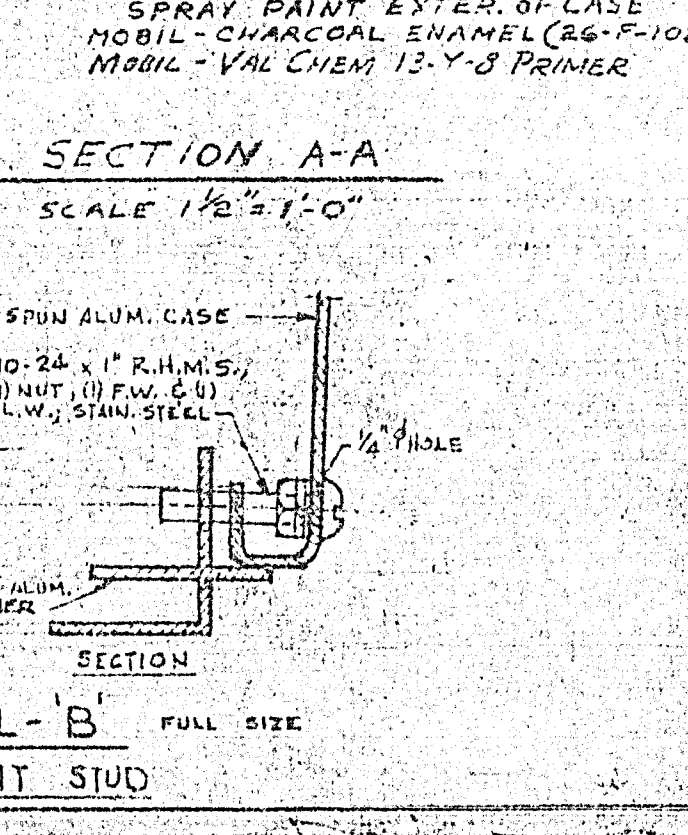
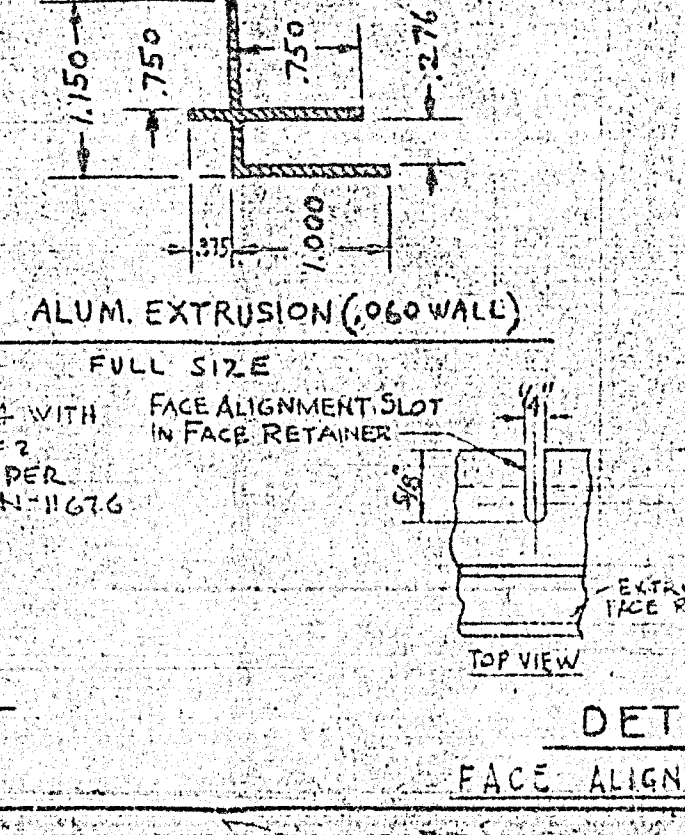
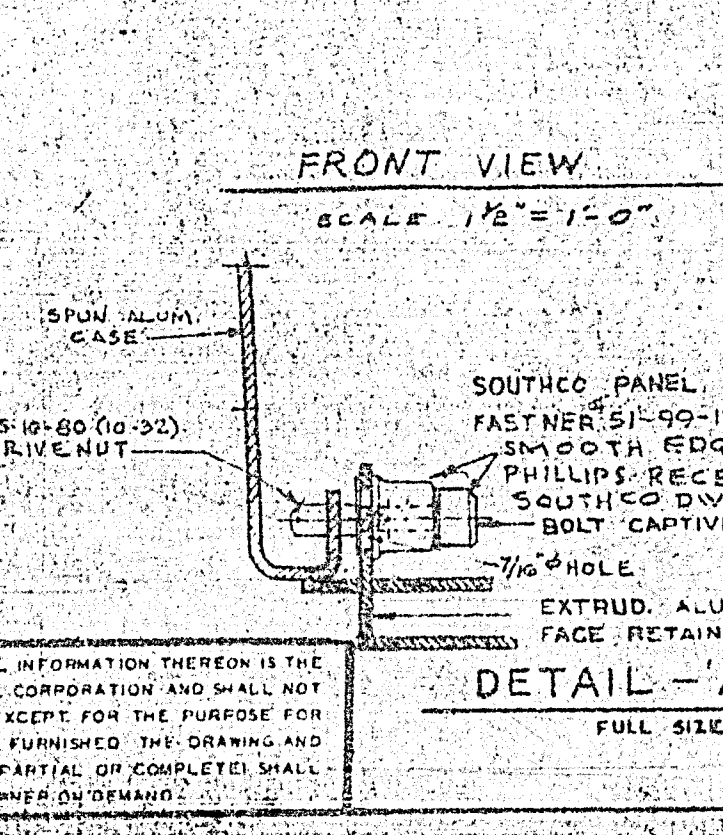
APPROVALS: _____ DATED: _____

DWG. NO. SD-17741

THIS DRAWING IS THE PROPERTY OF MOBIL OIL CORPORATION. IT CONTAINS INFORMATION REGARDED AS CONFIDENTIAL BY MOBIL OIL. THIS DRAWING AND THE INFORMATION THEREON IS NOT TO BE USED OR DISCLOSED TO OTHERS EXCEPT WITH WRITTEN MOBIL OIL AUTHORIZATION. THIS DRAWING IS NOT TO BE REPRODUCED OR COPIED WITHOUT PERMISSION AND IS TO BE RETURNED TO MOBIL OIL WITH ANY COPIES (PARTIAL OR COMPLETE) ON DEMAND.



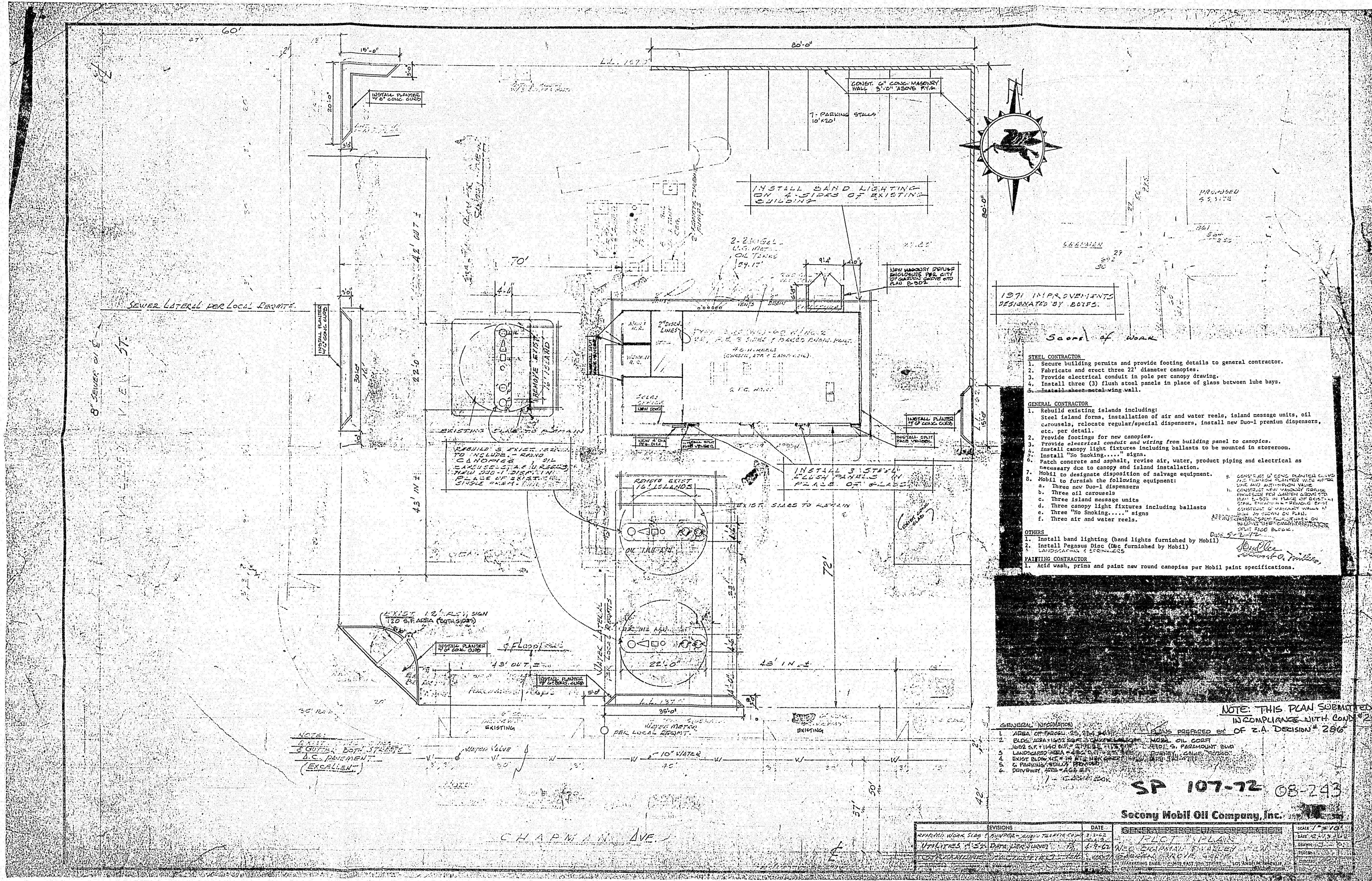
- GENERAL NOTES:**
1. THE MATERIAL FOR THE FACES AND BACK OF SIGN SHALL BE TYPE G-187 CAST ACRYLIC SHEET AS MANUFACTURED BY ROHM & HAAS CO. OR APPROVED EQUAL.
 2. THE BACK WILL BE BONDED TO FACE BY DIPPING THE EDGES OF THE FACE IN METHYLENE CHLORIDE.
 3. RED PEGASUS SILK SCREENED ON INSIDE SURFACE OF FACE. FLOOD SCREEN (ONE PASS GLIDDEN (191-R-11) MOBIL CENTURY RED).
 4. BACKGROUND SPRAY-PAINTED WHITE ON INSIDE SURFACE OF FACE. FIVE PASSES OF WHITE GLIDDEN (70-W-38 WHITE).
 5. ALUM. CASING: SPRAYED WITH MOBIL-CHARCOAL ENAMEL (26-F-102) ON OUTSIDE, & MAGNUS (A-A-100) WHITE ENAMEL INSIDE.
 6. CASING IS SPUN FROM .081 ALUM. (.070 FINISHED).
 7. FOUR CAPTIVE FASTENERS USED TO SECURE FACE TO CASING. (SOUTHCO PANEL FASTNER #51-02-11(12)).
 8. ENDON PLEXILUX H.O. LAMPS, VOLTAGE OR EQUAL (THREE U6-6012/PLX/HO LAMPS, ONE F24T12/PLX/HO LAMP).
 9. ALL SIGNS TO BE UNDERWRITERS LABORATORIES APPROVED AND LABELED.
 10. ALL SIGNS TO BE UNION MADE AND LABELED.
 11. ALL MATERIALS TO BE OF A NON-CORROSIVE, WEATHER RESISTANT NATURE.
 12. IDENTIFICATION OF SIGN FABRICATOR YEAR OF FABRICATION AND DRAWING NUMBER SHALL APPEAR ON PLATE IN A PERMANENT MANNER IN THESE DIMENSIONS: 1 1/2" x 1 1/2" x 1/8" (MIN).
 13. PEGASUS TO BE PRECISE COPY OF MASTER ART FURNISHED BY MOBIL.
 14. ALL SIGN WIRING SHALL BE INSULATED FOR 1000 VOLT SERVICE. SOCKETS & BALLASTS SHALL BE FOR LOW TEMPERATURE OUTDOOR SERVICE. THE ENTIRE INSTALLATION SHALL BE IN ACCORDANCE WITH MANUFACTURERS RECOMMENDATIONS, NATIONAL ELECTRIC CODE AND APPLICABLE ELECTRICAL CODES. DESIGN WATTAGE IS 340W.
 15. ASSEMBLIES SHALL BE SHIPPED IN SUBSTANTIAL CONTAINERS, ONE PER CONTAINER AS ORDERED. CARE SHALL BE TAKEN TO PROTECT THE PLASTIC FACES AND TO PROPERLY BRACE THE SIGN TO AVOID POSSIBLE DAMAGE TO FACES & FLUORESCENT LAMPS DURING TRANSPORT.
 16. THE SURFACE AREA OF THE SIGN IS 12.56 SQ. FT.



REVISIONS		MOBIL OIL CORPORATION RECEIVED	
NO.	DESCRIPTION	DATE	BY
1	ORIGINAL ISSUE		
2	REVISED ALUM. CASE EXTENSION		
3	REVISED DETAIL A-A TO SET DETAIL B-B AND C-C TO DETAIL A-A		
4	REVISED DETAIL C-C TO SET DETAIL B-B TO DETAIL A-A		
5	REVISED DETAIL C-C TO SET DETAIL B-B TO DETAIL A-A		

MOBIL OIL CORPORATION SERVICE STATION ENGINEERING NEW YORK, N. Y. 10017	MAR 18 1972
27 PEGASUS DISC INTERNALLY ILLUMINATED SINGLE-FACE FOR WALL MOUNT	LAND USE
1035	4
3-21-67	1 of 1

THIS DRAWING AND ALL INFORMATION THEREON IS THE PROPERTY OF MOBIL OIL CORPORATION AND SHALL NOT BE COPIED OR USED EXCEPT FOR THE PURPOSE FOR WHICH IT IS EXPRESSLY FURNISHED. THIS DRAWING AND ANY CORRECTIONS THEREOF SHALL BE RETURNED TO THE OWNER ON DEMAND.



- SCOPE OF WORK**
- STEEL CONTRACTOR**
1. Secure building permits and provide footing details to general contractor.
 2. Fabricate and erect three 22' diameter canopies.
 3. Provide electrical conduit in pole per canopy drawing.
 4. Install three (3) flush steel panels in place of glass between lube bays.
 5. Install sheet metal wing wall.
- GENERAL CONTRACTOR**
1. Rebuild existing islands including: Steel island forms, installation of air and water reels, island message units, oil canopies, relocate regular/special dispensers, install new Duo-1 premium dispensers, etc. per detail.
 2. Provide footings for new canopies.
 3. Provide electrical conduit and wiring from building panel to canopies.
 4. Install canopy light fixtures including ballasts to be mounted in storeroom.
 5. Patch concrete and asphalt, revise air, water, product piping and electrical as necessary due to canopy and island installation.
 6. Mobil to designate disposition of salvage equipment.
 7. Mobil to furnish the following equipment:
 - a. Three new Duo-1 dispensers
 - b. Three oil canopies
 - c. Three island message units
 - d. Three canopy light fixtures including ballasts
 - e. Three "No Smoking...." signs
 - f. Three air and water reels.
 8. Construct of concrete masonry wall 8" thick and 8' high above grade. (See detail for wall construction.)
 9. Construct new concrete masonry wall 8" thick and 8' high above grade. (See detail for wall construction.)
 10. Construct new concrete masonry wall 8" thick and 8' high above grade. (See detail for wall construction.)
 11. Construct new concrete masonry wall 8" thick and 8' high above grade. (See detail for wall construction.)
 12. Construct new concrete masonry wall 8" thick and 8' high above grade. (See detail for wall construction.)
 13. Construct new concrete masonry wall 8" thick and 8' high above grade. (See detail for wall construction.)
 14. Construct new concrete masonry wall 8" thick and 8' high above grade. (See detail for wall construction.)
 15. Construct new concrete masonry wall 8" thick and 8' high above grade. (See detail for wall construction.)
 16. Construct new concrete masonry wall 8" thick and 8' high above grade. (See detail for wall construction.)
 17. Construct new concrete masonry wall 8" thick and 8' high above grade. (See detail for wall construction.)
 18. Construct new concrete masonry wall 8" thick and 8' high above grade. (See detail for wall construction.)
 19. Construct new concrete masonry wall 8" thick and 8' high above grade. (See detail for wall construction.)
 20. Construct new concrete masonry wall 8" thick and 8' high above grade. (See detail for wall construction.)
- OTHERS**
1. Install band lighting (band lighters furnished by Mobil)
 2. Install Pegasus Disc (Disc furnished by Mobil)
 3. Landscaping & Signage
- PAINTING CONTRACTOR**
1. Acid wash, prime and paint new round canopies per Mobil paint specifications.

NOTE: THIS PLAN SUBMITTED IN COMPLIANCE WITH CODE #2 OF Z.A. DECISION # 286

GENERAL INFORMATION

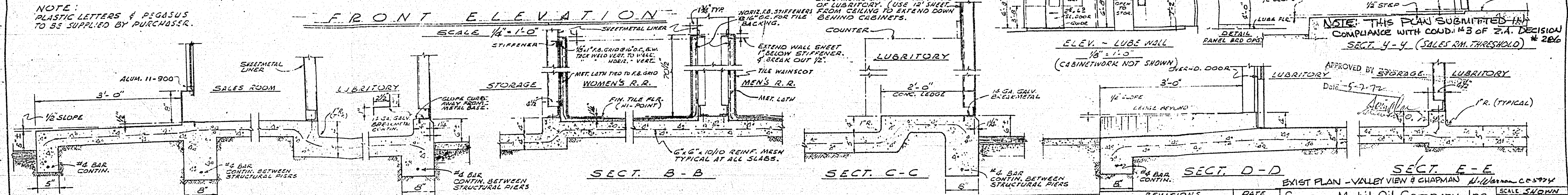
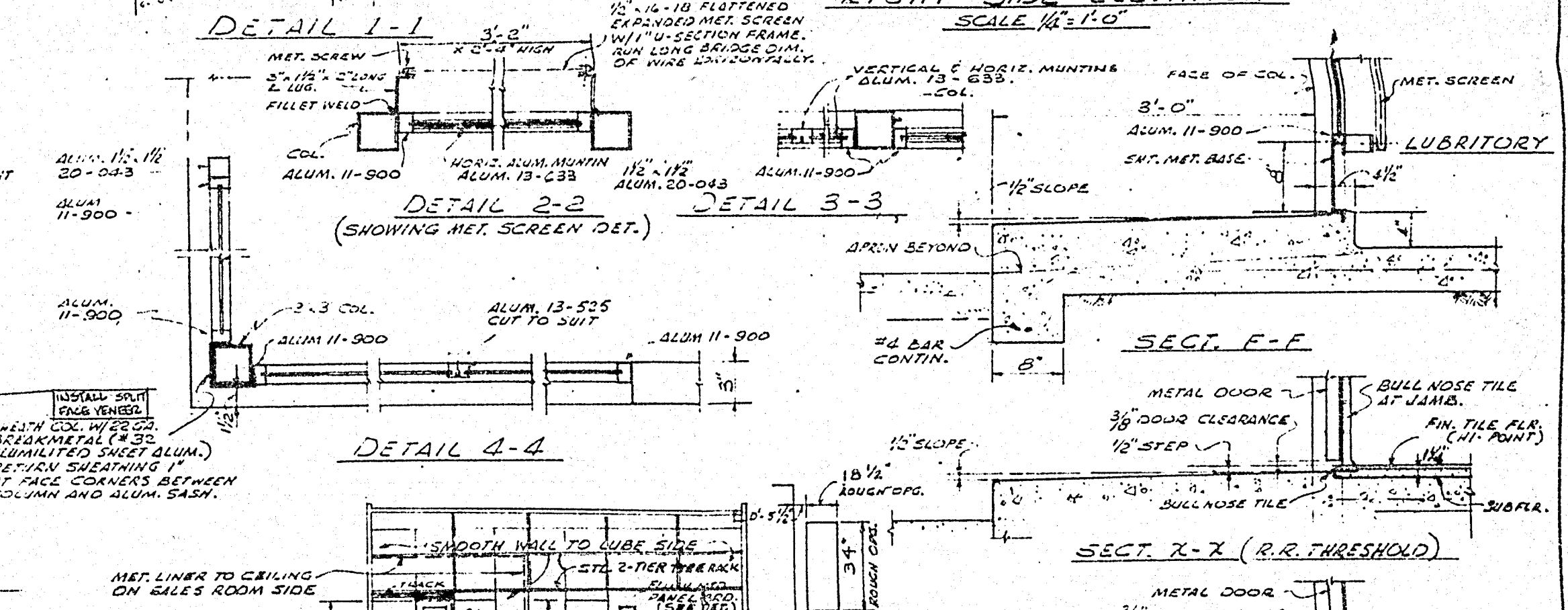
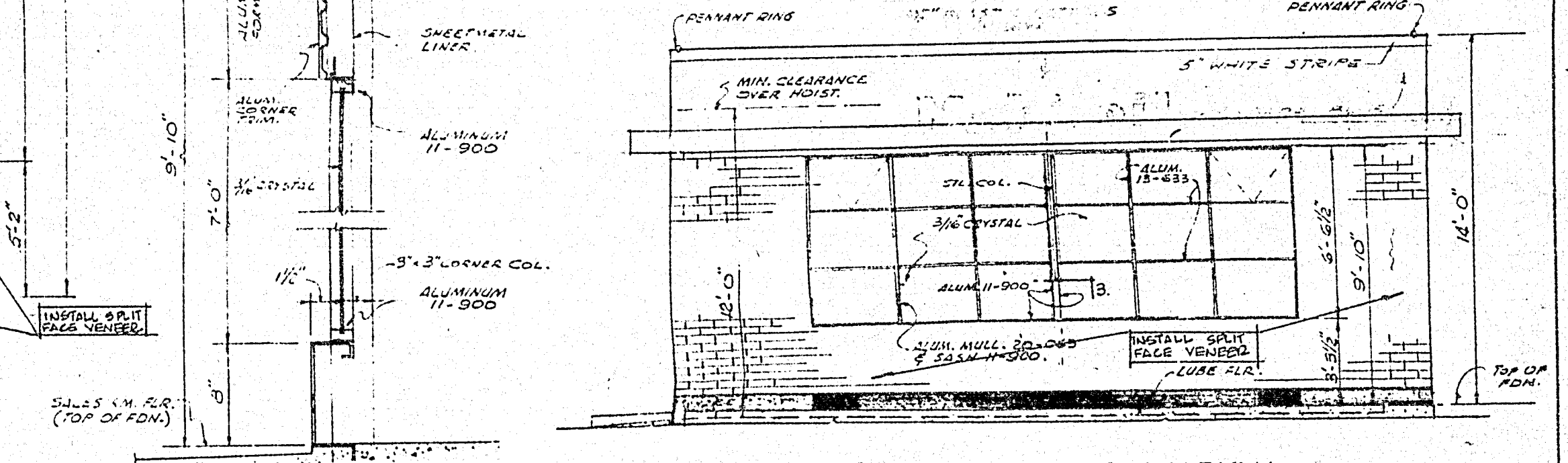
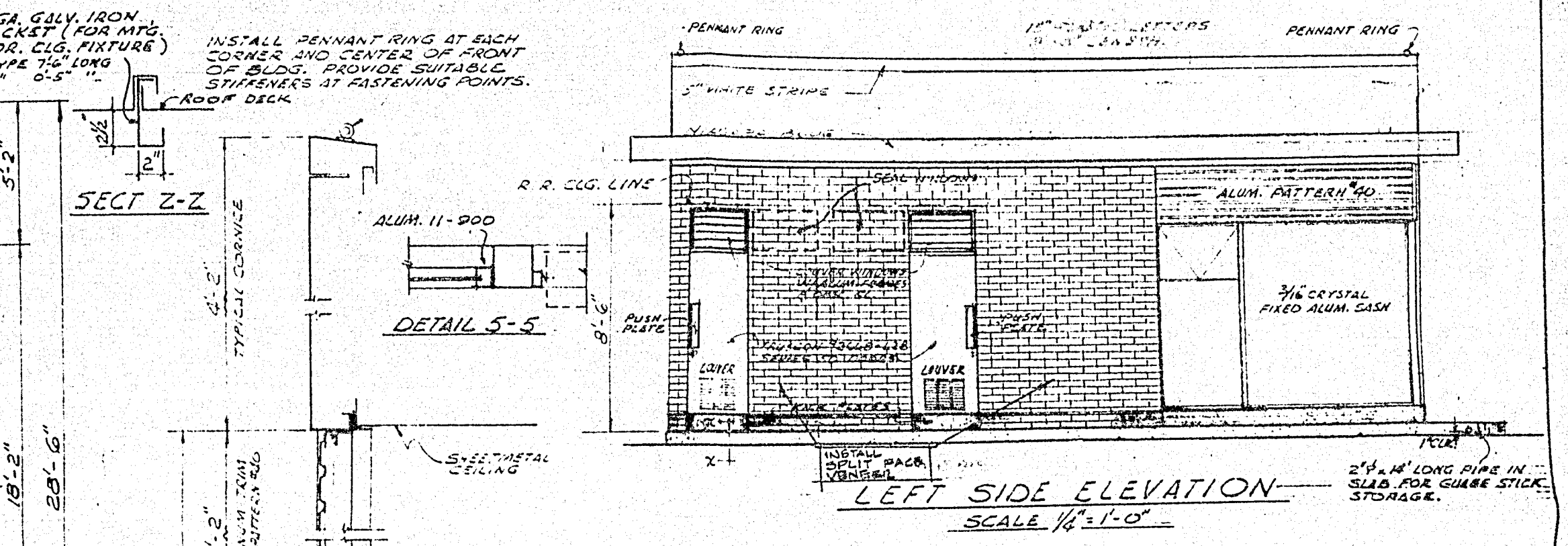
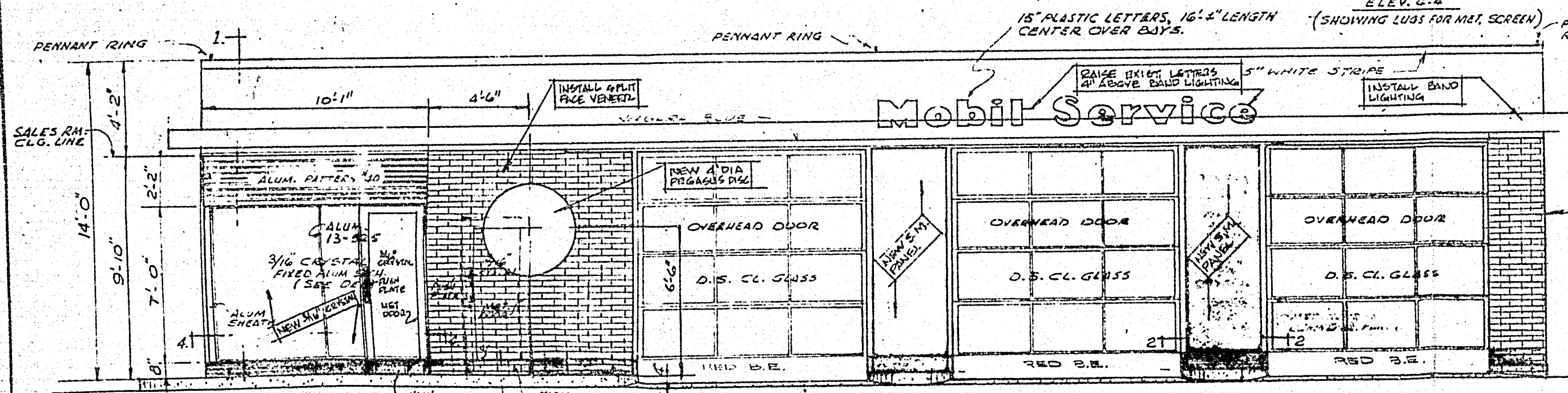
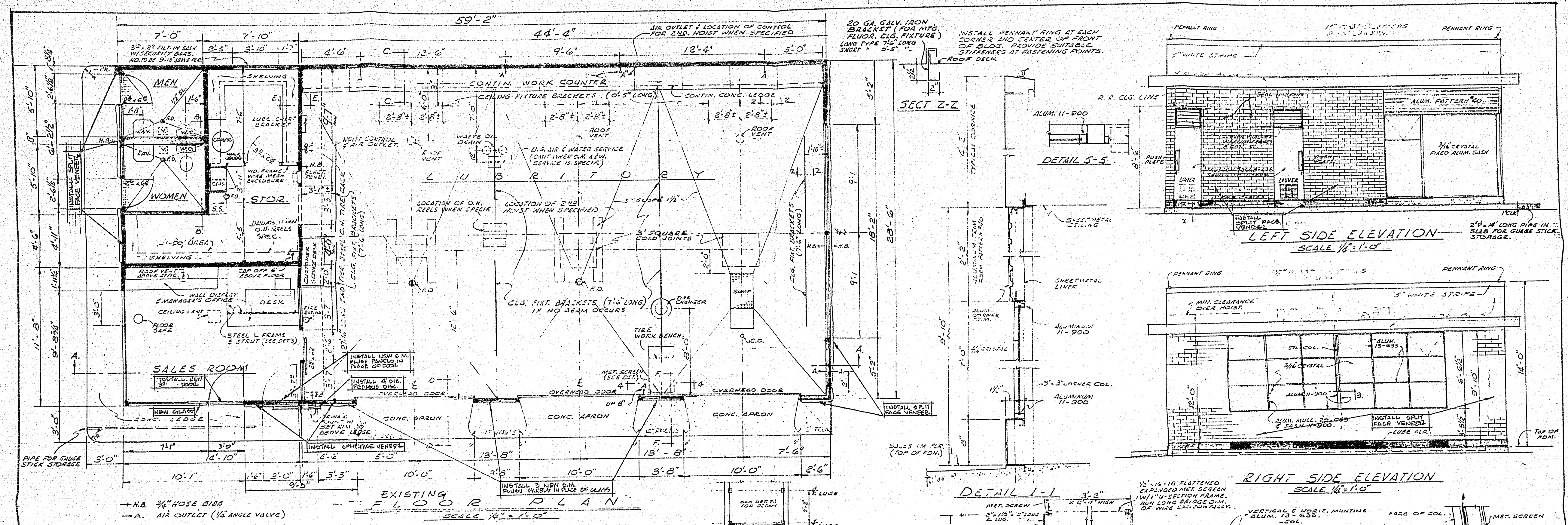
1. AREA OF PROJECT: 25, 1st, 2nd, 3rd, 4th, 5th, 6th, 7th, 8th, 9th, 10th, 11th, 12th, 13th, 14th, 15th, 16th, 17th, 18th, 19th, 20th, 21st, 22nd, 23rd, 24th, 25th, 26th, 27th, 28th, 29th, 30th, 31st, 32nd, 33rd, 34th, 35th, 36th, 37th, 38th, 39th, 40th, 41st, 42nd, 43rd, 44th, 45th, 46th, 47th, 48th, 49th, 50th, 51st, 52nd, 53rd, 54th, 55th, 56th, 57th, 58th, 59th, 60th, 61st, 62nd, 63rd, 64th, 65th, 66th, 67th, 68th, 69th, 70th, 71st, 72nd, 73rd, 74th, 75th, 76th, 77th, 78th, 79th, 80th, 81st, 82nd, 83rd, 84th, 85th, 86th, 87th, 88th, 89th, 90th, 91st, 92nd, 93rd, 94th, 95th, 96th, 97th, 98th, 99th, 100th.
2. BLOCK: 1000
3. LANDSCAPE AREA: 1000
4. EXIST. BLDG. NO. 1000
5. C. PARKING: 1000
6. DRIVEWAY: 1000

SP 107-72 08-243

Secony Mobil Oil Company, Inc.

REVISIONS	DATE	BY	APPROVED BY
1. REVISED WORK SHEET	5/2/72	J. A. CHAPMAN	J. A. CHAPMAN
2. REVISED WORK SHEET	5/2/72	J. A. CHAPMAN	J. A. CHAPMAN
3. REVISED WORK SHEET	5/2/72	J. A. CHAPMAN	J. A. CHAPMAN
4. REVISED WORK SHEET	5/2/72	J. A. CHAPMAN	J. A. CHAPMAN
5. REVISED WORK SHEET	5/2/72	J. A. CHAPMAN	J. A. CHAPMAN
6. REVISED WORK SHEET	5/2/72	J. A. CHAPMAN	J. A. CHAPMAN
7. REVISED WORK SHEET	5/2/72	J. A. CHAPMAN	J. A. CHAPMAN
8. REVISED WORK SHEET	5/2/72	J. A. CHAPMAN	J. A. CHAPMAN
9. REVISED WORK SHEET	5/2/72	J. A. CHAPMAN	J. A. CHAPMAN
10. REVISED WORK SHEET	5/2/72	J. A. CHAPMAN	J. A. CHAPMAN

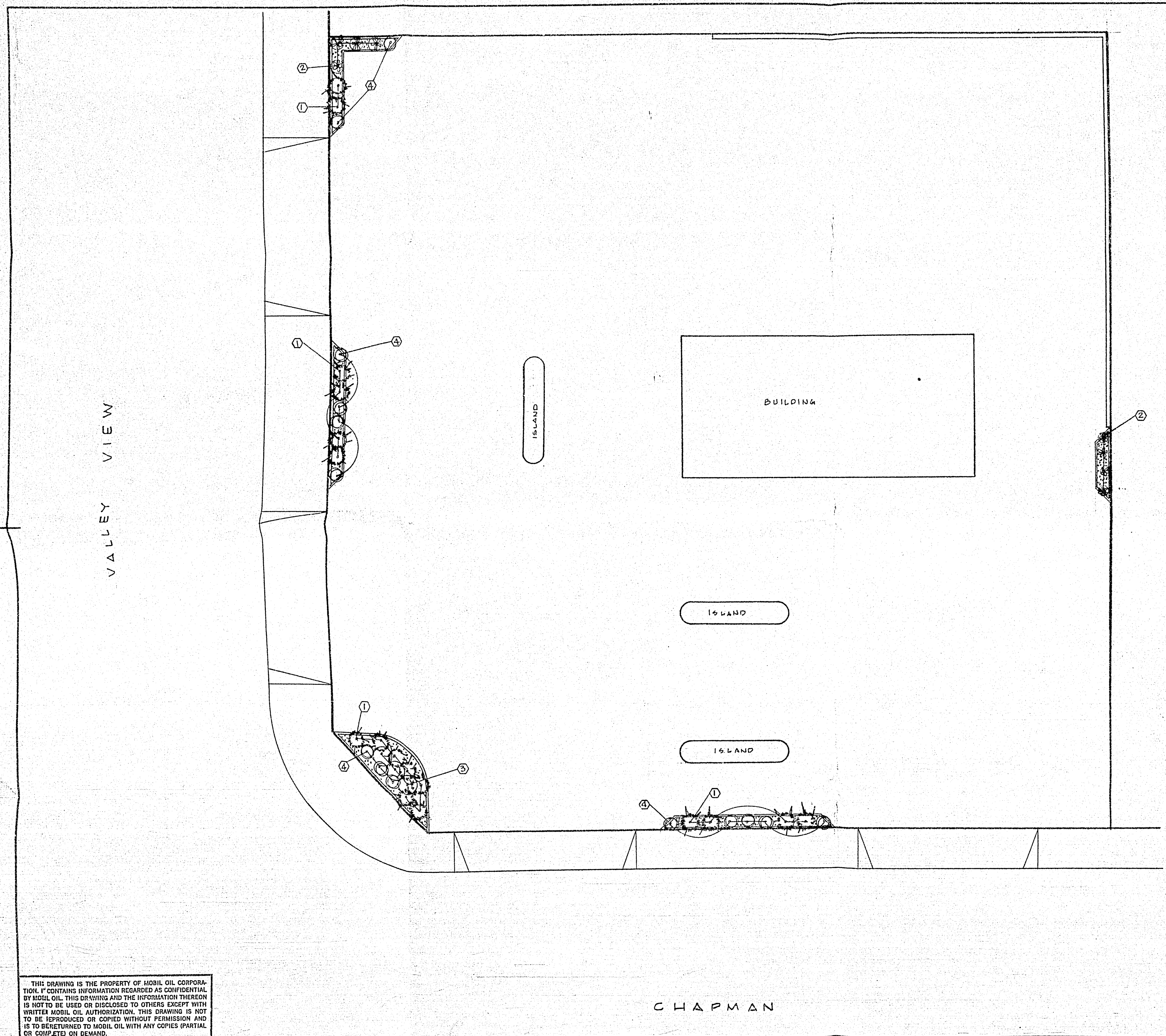
CHAPMAN AVE.



REVISIONS	DATE	BY
1. CORRECTED LINES	11-15-62	[Signature]
2. CORRECTED LINES	11-15-62	[Signature]
3. CORRECTED LINES	11-15-62	[Signature]
4. CORRECTED LINES	11-15-62	[Signature]
5. CORRECTED LINES	11-15-62	[Signature]

EXIST. PLAN - VALLEY VIEW & CHAPMAN
Socony Mobil Oil Company, Inc.
FLOOR PLAN & ELEVATIONS
TYPE 3 HAS (W) 60 BLDG. W/ R.R. NO. 1
STANDARD DWG. 5 STANDARD DWG.
MARKETING ENG. 500 EAST 37th STREET, LOS ANGELES 58, CALIF.
SCALE 1/4" = 1'-0"
DATE 11-15-62
DRAWN [Signature]
CHECKED [Signature]
5D-16622
REV. PLAN 4-10-72
SP 107P (L.T.)

VALLEY VIEW



PLANT LIST			
KEY	PLANT NAMES	QUANTITY	SIZE
①	JUNIPERUS 'GOLDEN PRITZER'	17	5 GALS
②	JUNIPERUS 'SEA GREEN'	8	5 GALS
③	JUNIPERUS HORIZONTALIS PLUMOSA 'ANDORRA JUNIPER'	3	5 GALS
④	NANDINA DOMESTICA 'HEAVENLY BAMBOO'	14	5 GALS

- NOTES:**
1. 6" MIN TOP SOIL IN ALL PLANTERS.
 2. 2" REDWOOD BARK GROUND COVER IN ALL OPEN AREAS.
 3. INSTALL LOOSE BIBBS w/ ANTI-SIPHON VALVES & MANUAL CONTROL SPRINKLERS w/ BUBBLER HEADS @ 6'-0" O.C. TYP IN ALL PLANTERS.

NOTE: THIS PLAN SUBMITTED IN COMPLIANCE WITH COND. #1 OF Z.A. DECISION # 286

THIS DRAWING IS THE PROPERTY OF MOBIL OIL CORPORATION. IT CONTAINS INFORMATION REGARDED AS CONFIDENTIAL BY MOBIL OIL. THIS DRAWING AND THE INFORMATION THEREON IS NOT TO BE USED OR DISCLOSED TO OTHERS EXCEPT WITH WRITTEN MOBIL OIL AUTHORIZATION. THIS DRAWING IS NOT TO BE REPRODUCED OR COPIED WITHOUT PERMISSION AND IS TO BE RETURNED TO MOBIL OIL WITH ANY COPIES (PARTIAL OR COMPLETE) ON DEMAND.

NO.	REVISIONS	DATE	BY

Mobil Oil Corporation
WEST COAST DIVISION
MARKETING DEPARTMENT
LOS ANGELES, CALIFORNIA

LANDSCAPE PLAN
N/E.C. VALLEY VIEW & CHAPMAN
GARDEN GROVE, CALIFORNIA

DRAWN: AZELOY SCALE: 1/8" = 1'-0"
CHECKED: DATE: 4-20-72

DWG. NO. SP 107-72

08-243