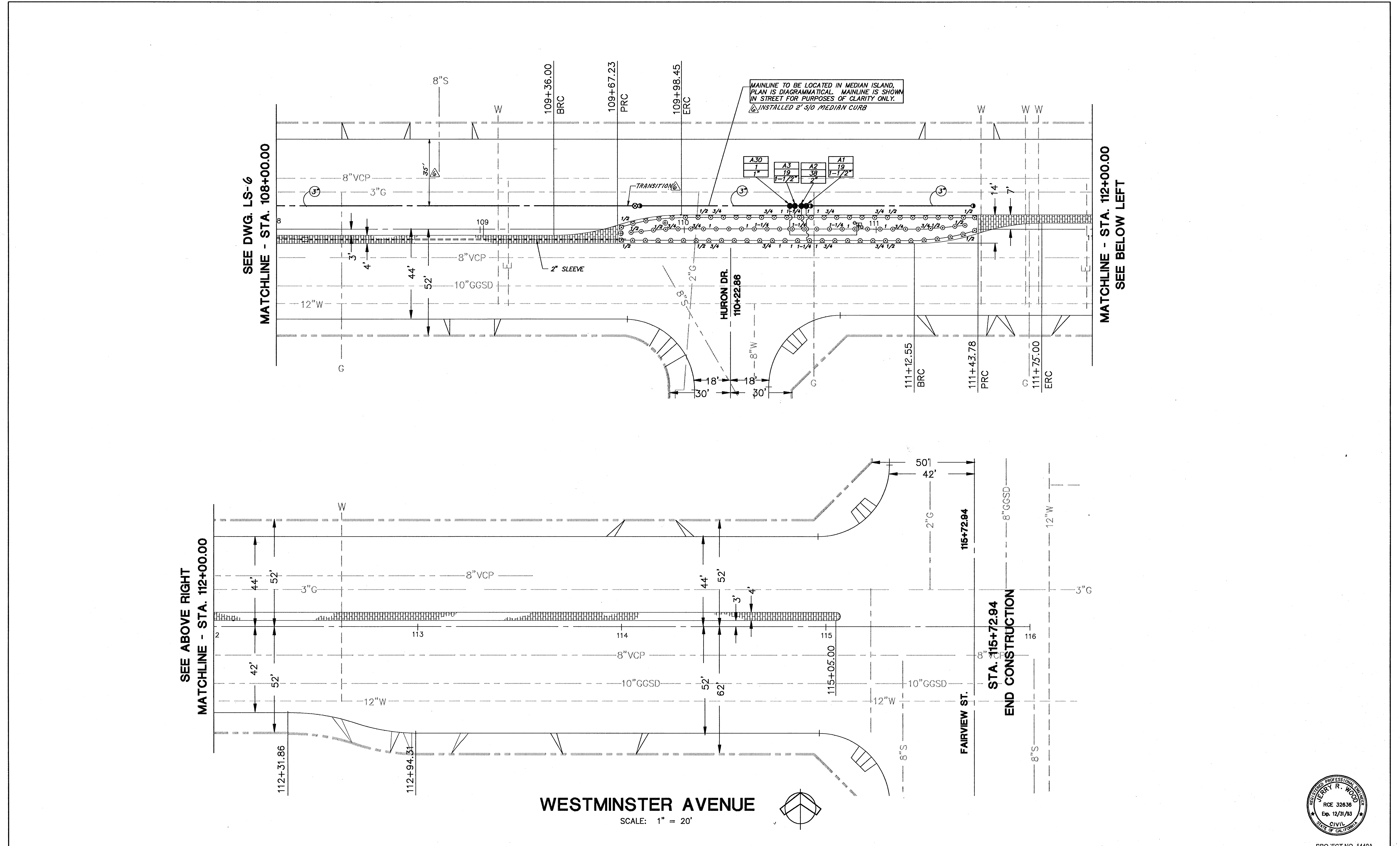


WESTMINSTER AVE WIDENING + REHAB
WEST ST TO FAIRVIEW ST

DRAWING NUMBER
26 of 39

DRAWING NUMBER
PR 1440A

DRAWING NUMBER
1-21-23



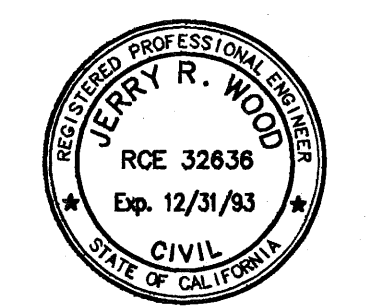
WESTMINSTER AVENUE
SCALE: 1" = 20'

SEE ABOVE RIGHT
MATCHLINE - STA. 112+00.00

SEE DWG. LS-6
MATCHLINE - STA. 108+00.00

MATCHLINE - STA. 112+00.00
SEE BELOW LEFT

FAIRVIEW ST.
STA. 115+72.94
END CONSTRUCTION



PROJ. SECT NO. 1440A

FILE NO. 1-021-23	COMPLETED 4/15/99					REFERENCES		PREPARED UNDER THE SUPERVISION OF		DATE	IRRIGATION PLAN STA. 108+00 TO 115+72.94 PUBLIC WORKS AGENCY	LS-7
	NUMBER	DATE	INITIALS	DESCRIPTION	APP'VD	BENCH MARK NO.	ELEV.	DESIGNED <i>Gerry R. Wood</i>	R.C.E. NO. 32434	11/22/97		
	12-19-96	MDM	"AS BUILT"					R/W APP'VD	DRAWN	CHECKED		
								RECOMMENDED				
								APPROVED: <i>Michael J. ...</i>	FOR S. Amiran	11/95		
								CITY ENGINEER	R.C.E. NO. 36060			

CITY OF SANTA ANA

SHEET 31 OF 41