



GARDEN GROVE PUBLIC WORKS DEPARTMENT SERVICE REQUEST #429575

Service Request: 429575

Department: Public Works

Status: CLOSED

Priority: NORMAL

Created at: August 07, 2017 12:00AM

Requester: Soumelia Gountouma

Home Phone:

Work Phone: 5564

Other Phone:

Created by: liag

Request: NPDES COMMERCIAL INSPECTION OF TOYOTA PLACE OF GARDEN GROVE

Location: 9444 TRASK AVE,

Public Property: NO

Square Feet:

Eng. Permit:

Police Num.:

Fire Num.:

File attachments: 18

Note #1 (08/10/17 by liag): A JOINT FOLLOW-UP INSPECTION WITH A. J. HOLMON, SUPERVISOR WAS CONDUCTED ON 8/9/2017. MET WITH PAT PETTY, SERVICE DIRECTOR ONSITE AND DISCUSSED REGARDING THE LIQUID DISCHARGE FROM THE CAR WASH AREA TO THE STORM DRAIN AND TO THE CAL TRANS BIO SWALE. HE STATED THAT THE PRESSURE WASH OUTSIDE THE CAR WASH HAS BEEN LOCKED OUT AND THE HOSES HAVE BEEN REMOVED IN ORDER TO DISCONTINUE THE PRE WASH OF CARS. ADVISED MR. PETTY, THAT THE WATER FLOWING FROM THE CAR WASH AREA NEEDS BE DISCHARGED IN A PROPER MANNER AND THAT A TRENCH DRAIN IS REQUIRED TO BE INSTALLED AT THE ENTRY OF THE CAR WASH AREA IN ORDER TO CATCH THE WATER AND PREVENT IT FROM FLOWING INTO THE ADJACENT STORM DRAIN. IN ADDITION, HE WAS INFORMED THAT A NOTICE OF CORRECTION MAYBE FORTHCOMING FOR THE FACILITY BY THIS DEPARTMENT.

Note #2 (10/17/17 by liag): ON 10/9/17, A CONSULTATION WAS CONDUCTED WITH SAM, MANAGER. VISITED THE CAR WASH AREA AND OBSERVED THAT A PREWASH SECTION HAS BEEN ADDED ADJACENT TO THE ENTRANCE. A DRAIN WAS OBSERVED BUILT IN THE CENTER AND A BERM WITH TRENCH DRAINS ALONG THE PERIMETER OF THE NEWLY CONSTRUCTED AREA IN ORDER TO CONTAIN THE LEAKING WATER DURING CAR WASH ACTIVITIES. THE CENTRAL DRAIN WAS OBSERVED BEEN CONNECTED TO THE CLARIFIER LOCATED NEAR BY. ADVISED MANAGER TO COMPLETE THE PROJECT AND NOTIFY THIS DEPARTMENT UPON COMPLETION.

Note #3 (10/17/17 by liag): A JOINT FOLLOW-UP AS PER MANAGER'S REQUEST WAS CONDUCTED ON 10/17/17 REGARDING THE PREWASH AREA. ON THIS DATE THE CONSTRUCTION AT THE AREA HAS BEEN COMPLETED AND NO WATER WAS OBSERVED LEAKING TOWARDS THE CALTRANS STORM DRAIN DURING CAR WASHING ACTIVITIES. THE VIOLATIONS WERE CORRECTED.

Task #1

Status: CLOSED on August 07, 2017 12:00AM by Soumelia Gountouma

Description: NPDES COMMERCIAL INSPECTION OF TOYOTA PLACE OF GARDEN GROVE

Comments: SPOKE WITH PAT PETTY, PARTS AND SERVICE DIRECTOR. OBSERVED LIQUID FROM THE CAR WASH/PRE-WASH AREA LOCATED IN THE SOUTH WEST SIDE OF THE PROPERTY, DISCHARGING INTO THE ADJACENT STORM DRAIN AND TO THE CAL TRANS BIO SWALE. THE STORM DRAIN WAS OBSERVED DIRTY AND COVERED WITH SLIME AND DIRT. NO

BMPS HAVE BEEN IMPLEMENTED ONSITE. A NOTICE OF CORRECTION MAY FORTHCOMING TO THIS FACILITY (REFER TO ATTACHMENTS). CITY AND NPDES REGULATIONS WERE DISCUSSED. EDUCATIONAL BROCHURES WERE PROVIDED. PHOTOS WERE TAKEN.

Category: 115 NPDES INSPECTION

Assigned to: Albert Holmon III

Division: ENVIRONMENTAL COMP

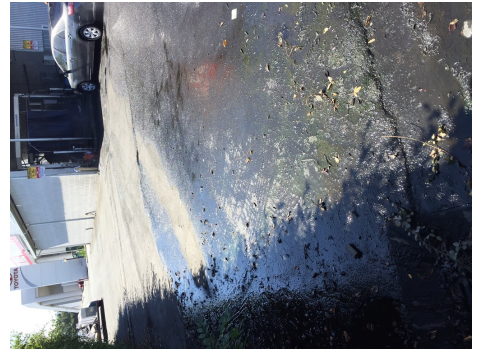
Requester contacted:

Completed by: Soumelia Gountouma

ECD:

Actions: 115.24 NOTICE OF NON-COMPLIANCE SENT, 115.3 COMMERCIAL, 115.17 BMP PARTIALLY IMPLEMENTED, B MEDIUM PRIORITY, 115.12 COMPLETED INSPECTION FORM, 115.10 EXPLAINED NPDES POLICIES, 115.15 OTHER (SEE COMMENTS), 115.3D1 MOBILE DETAILER/VEHICLE WASHING, 115.11 PROVIDED EDUCATIONAL BROCHURES

Photos for Workorder #429575



Photos for Workorder #429575

