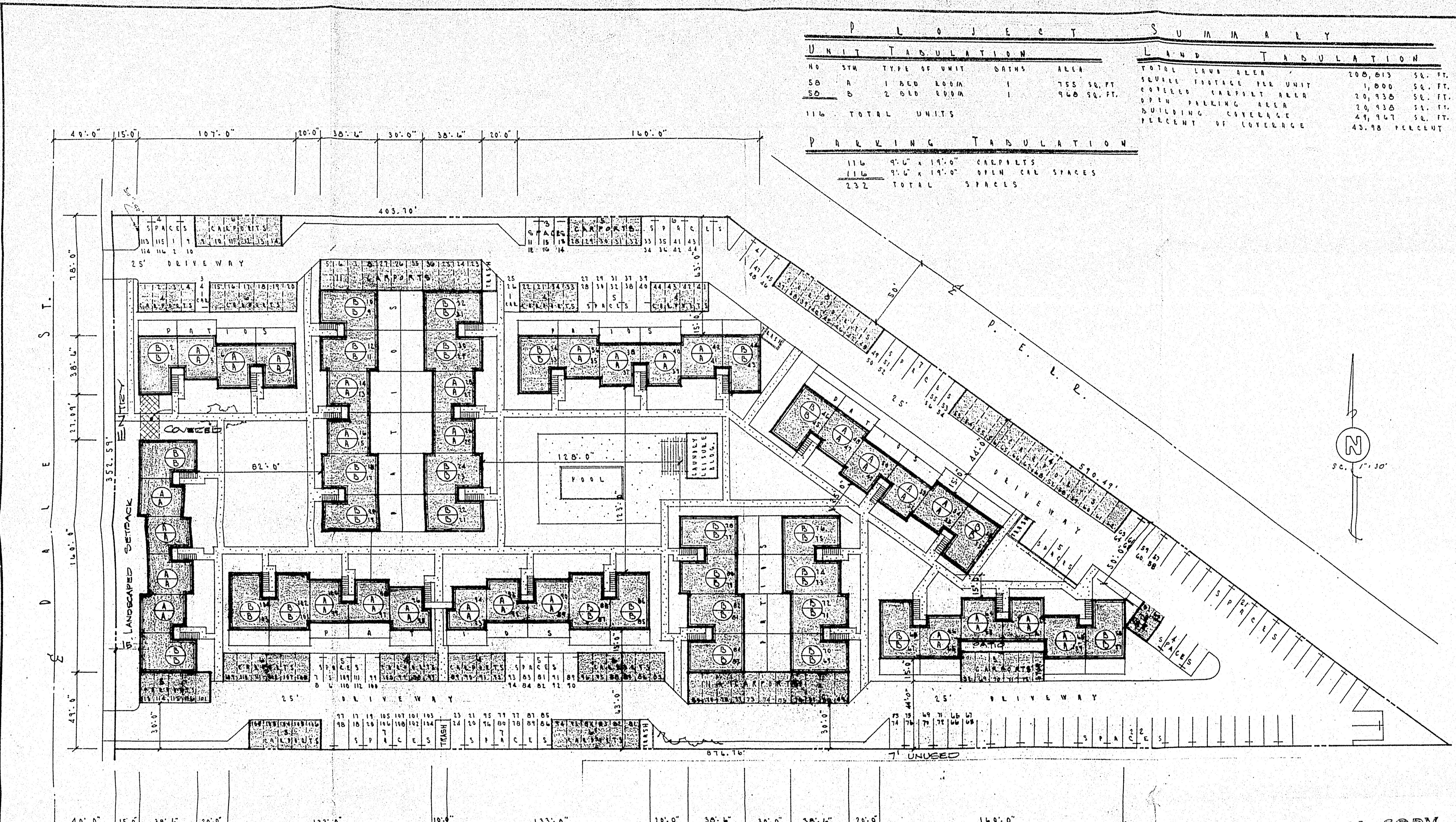


SPA 124-72



UNIT TABULATION				LAND TABULATION	
NO	SYM	TYPE OF UNIT	BATHS	AREA	TOTAL LAND AREA
50	A	1 BED ROOM	1	755 SQ. FT.	100,815 SQ. FT.
50	B	2 BED ROOM	1	960 SQ. FT.	1,000 SQ. FT.
116 TOTAL UNITS					20,938 SQ. FT.

PARKING TABULATION		
116	9'-0" x 19'-0"	CARPETS
116	9'-0" x 19'-0"	OPEN CAR SPACES
232 TOTAL SPACES		

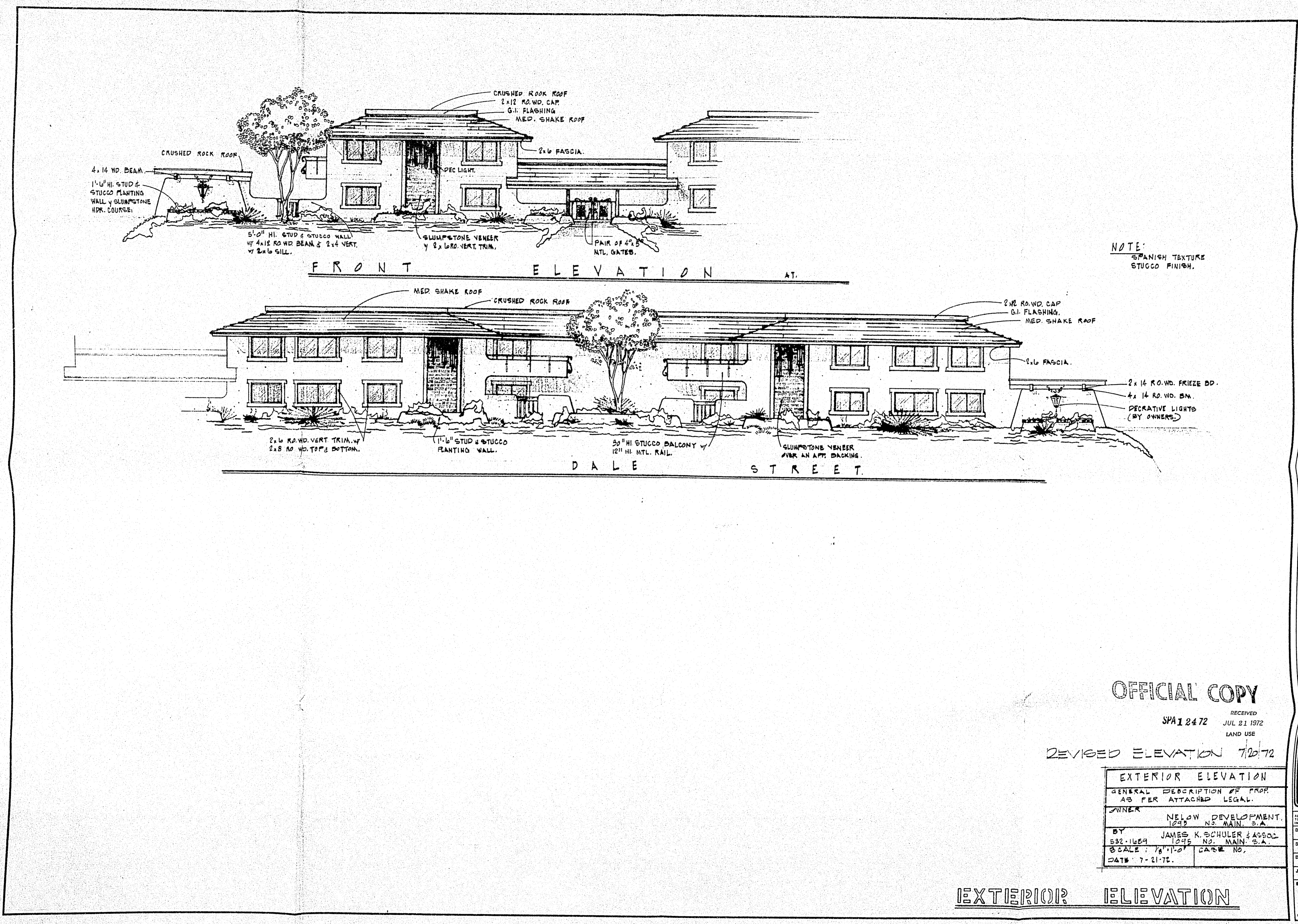
REVISIONS	BY

OFFICIAL COPY
 1st REVISION RECEIVED
 SPA 12472 JUL 21 1972
 LAND USE
 REVISED PLAN 7/20/72

PLOT PLAN	
GENERAL DESCRIPTION OF PLOP.	AS PER ATTACHED LEGAL
OWNER	HELAN DEVELOP. CO. INC.
BY	J.W. SCHULTE, C.A.S.S.C.
DATE	10/15/72
SCALE	1" = 30'
PARTIAL	DATE NO

REVISED PLOT PLAN
 NELSON DEVELOPMENT
 110 UNIT APT. BUILDING
 CITY OF GARDEN GROVE

DATE	6-18-72
SCALE	1" = 30'
DRAWN	
JOB	943-2
SHEET	
OF	SHEETS



REVISIONS	BY

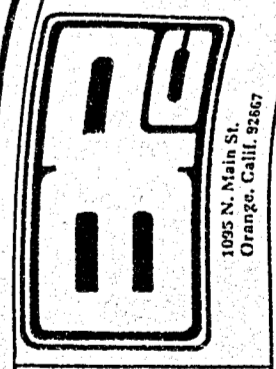
NOTE:
SPANISH TEXTURE
STUCCO FINISH.

OFFICIAL COPY

RECEIVED
SPA 12472 JUL 21 1972
LAND USE

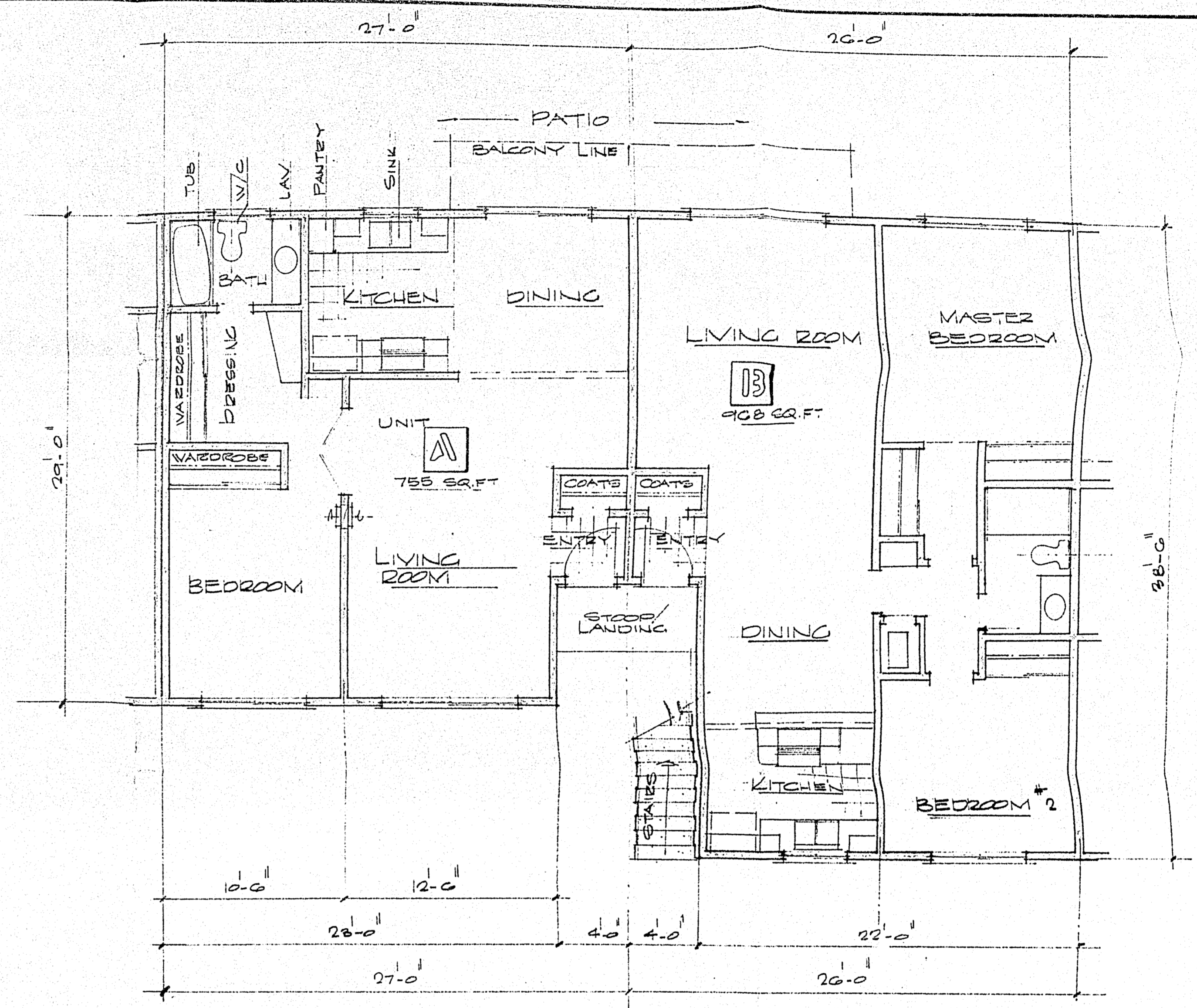
REVISED ELEVATION 7/20/72

EXTERIOR ELEVATION	
GENERAL DESCRIPTION OF PROP. AS PER ATTACHED LEGAL.	
OWNER	NELOW DEVELOPMENT, 1243 N. MAIN ST.
BY	JAMES K. SCHULER & ASSOC., 1245 N. MAIN ST.
SCALE: 1/8" = 1'-0"	CASE NO.
DATE: 7-21-72	



ALL DIMENSIONS AND CONDITIONS TO BE VERIFIED BY CONTRACTOR IN THE FIELD.	
DATE	7-21-72
SCALE	1/8" = 1'-0"
DRAWN	J.M.G.
JOB	743-2
SHEET	
OF	SHEETS

EXTERIOR ELEVATION



TYPICAL FLOOR PLANS

1/4" SCALE

REVISIONS	BY

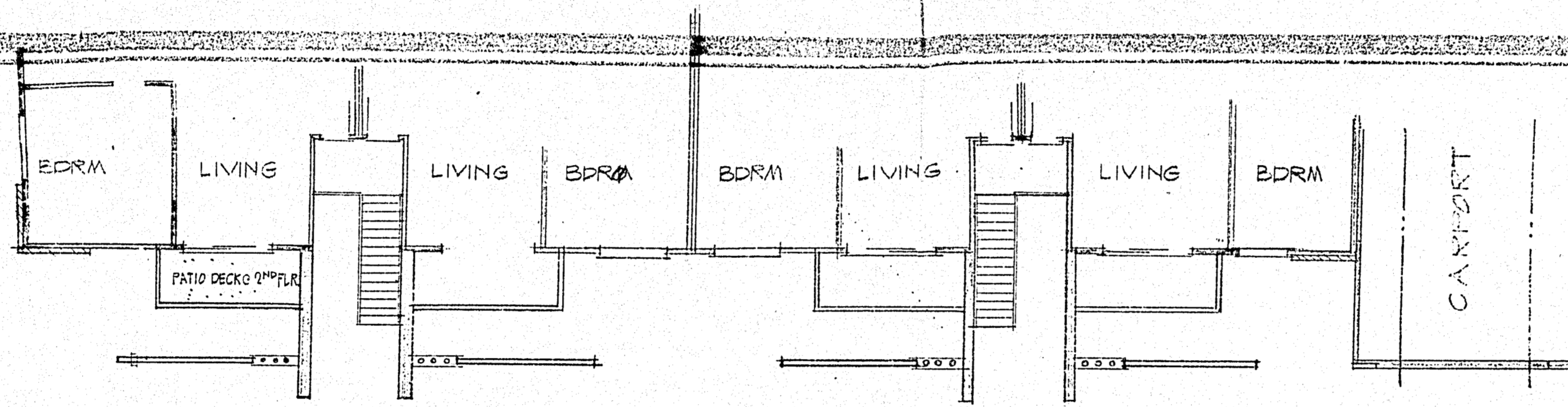
RECEIVED
JUN 29 1972
LAND USE

OFFICIAL COPY

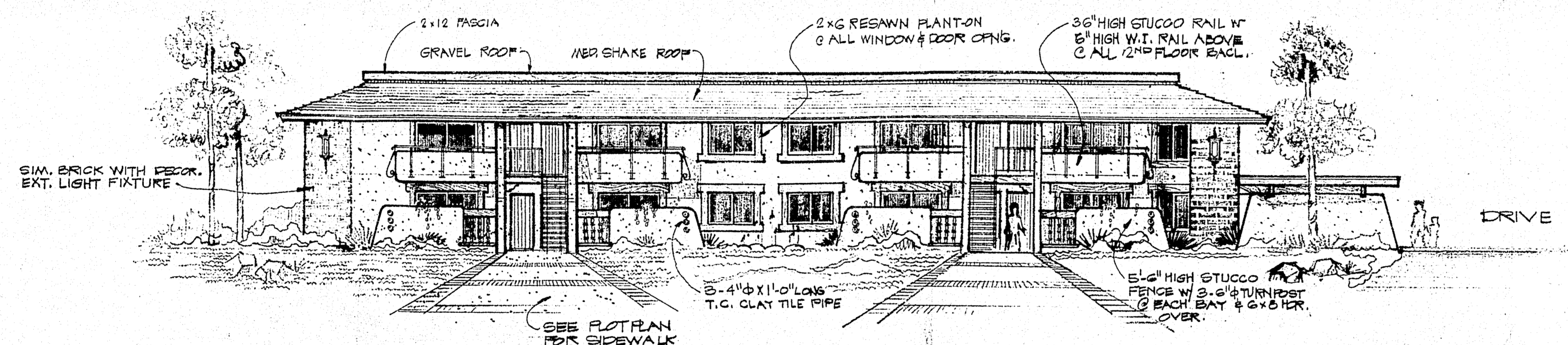
TYPICAL UNITS	
GENERAL DESCRIPTION OF PROP. AS PER ATTACHED LEGAL	
OWNER: NELSON DEVELOPMENT CO. 2125 MAIN ST. OMAHA	
BY: J. K. SHULER & ASSOC. 1025 N. MAIN OMAHA	
SCALE: 1/4"	CASE NO. SPA 2472
DATE: 6/12/72	

DATE: 6/12/72
SCALE: 1/4"
DRAWN: BP
JOB: 943-2
SHEET:
OF SHEETS:

PRINTED ON RECYCLED PAPER



PARTIAL FLOOR PLAN



FRONT EXTERIOR ELEVATION

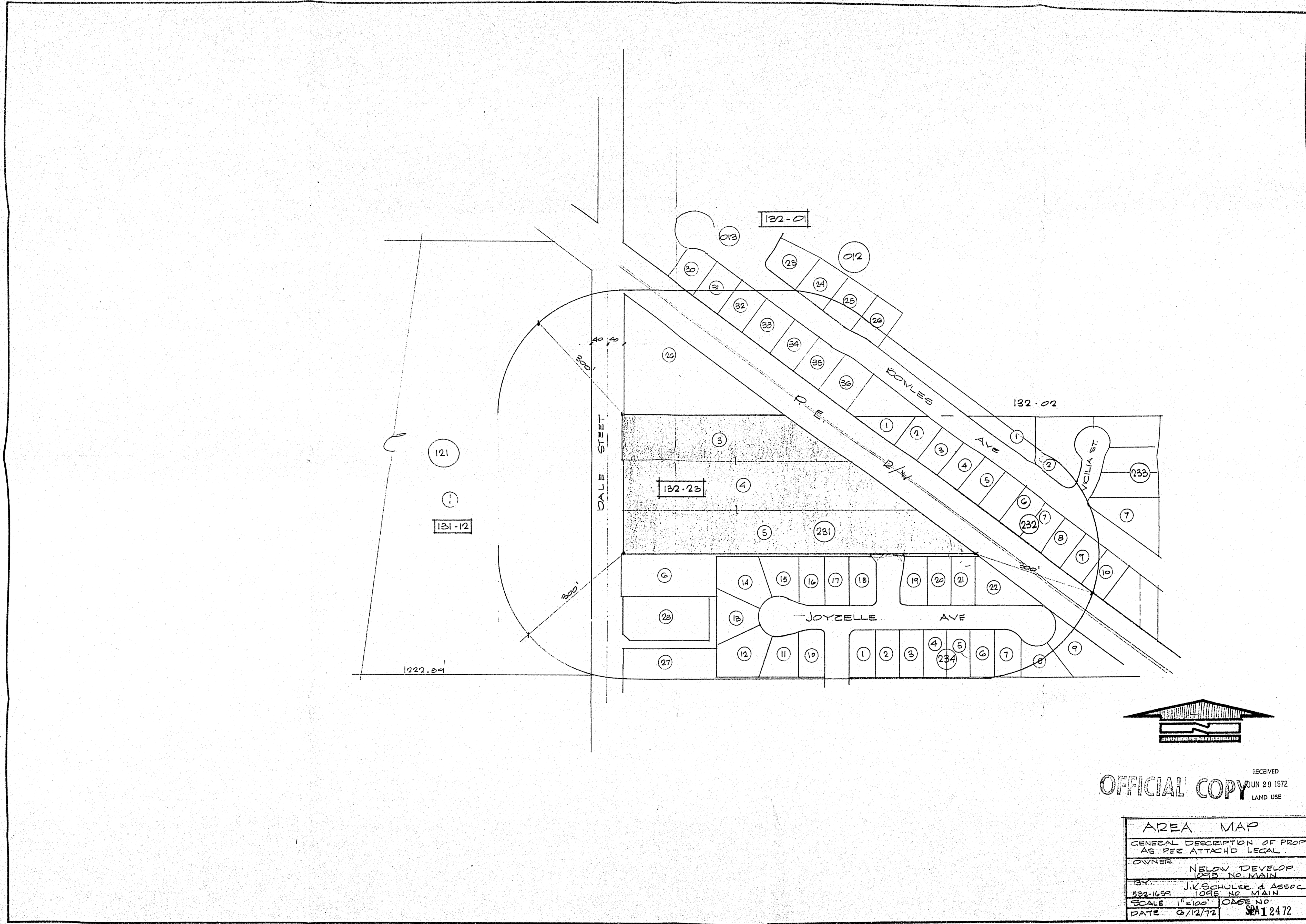
ELEVATION	
GENERAL DESCRIPTION OF PROP. AS PER ATTACHED LEGAL	
OWNER	NELOW DEVELOPMENT 1095 N. MAIN ORANGE
BY	J. K. SCHULER & ASSOC. 1095 N. MAIN ORANGE
SCALE	1/8" = 1'-0" CASE NO.
DATE	6.28.72

OFFICIAL COPY
SPR 1 2472

ELEV. BLDG. No 1

JAMES K. SCHULER & ASSOC. 1095 N. MAIN ST. ORANGE, CALIF.

RECEIVED
JUN 29 1972
LAND USE

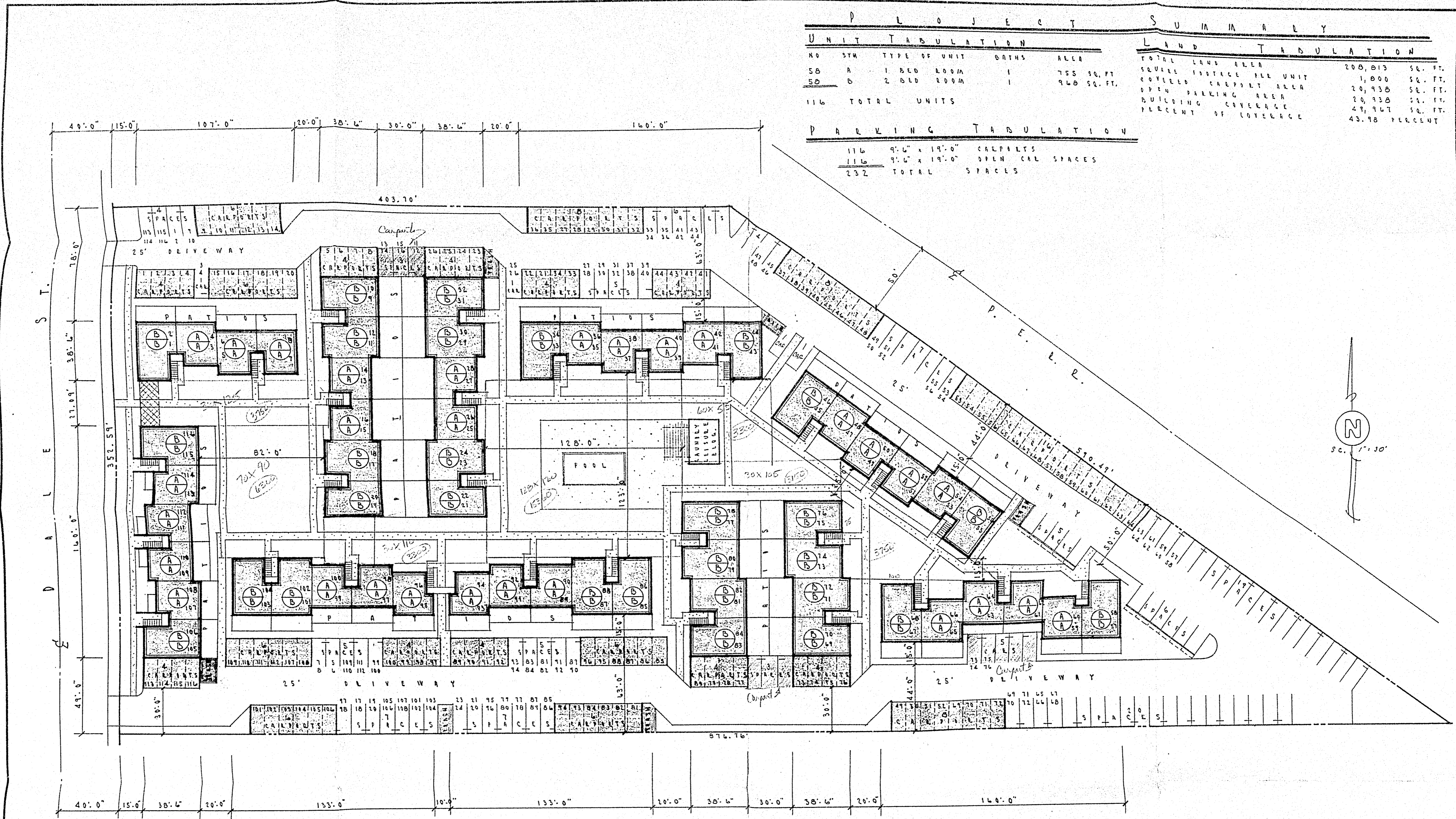


REVISIONS	BY

RECEIVED
OFFICIAL COPY JUN 29 1972
 LAND USE

AREA MAP
 GENERAL DESCRIPTION OF PROP
 AS PER ATTACHED LEGAL
 OWNER: NELSON DEVELOP.
 1235 NO. MAIN
 BY: J.V. SCHULEE & ASSOC.
 532-1659 1095 NO. MAIN
 SCALE 1"=100' CASE NO.
 DATE 6/12/72 SPA 12472

DATE	6-15-72
SCALE	
DRAWN	
JOB	943-2
SHEET	
OF SHEETS	



PROJECT SUMMARY					LAND TABULATION	
UNIT TABULATION					LAND TABULATION	
NO	STM	TYPE OF UNIT	BATHS	AREA		
58	A	1 BED ROOM	1	755 SQ. FT.	TOTAL LAND AREA	200,013 SQ. FT.
59	B	2 BED ROOM	1	960 SQ. FT.	COVERED WALKWAY AREA	1,000 SQ. FT.
116 TOTAL UNITS					OPEN PARKING AREA	20,430 SQ. FT.
					BUILDING COVERAGE	47,967 SQ. FT.
					PERCENT OF COVERAGE	43.98 PERCENT

PARKING TABULATION		
116	9'-6" x 19'-0"	CARPETS
116	9'-6" x 19'-0"	OPEN CAR SPACES
232 TOTAL SPACES		

REVISIONS	BY

R.A. = 28,910
 300 - 28,110
 22 -
 500 - 105 F 1/2 unit

7-24-72
 SUPERSEDED

RECEIVED
 JUN 29 1972
 LAND USE

OFFICIAL COPY

PLAT PLAN		DATE
GENERAL DESCRIPTION OF PROP. AS ALL ATTACHED LEGAL		6-18-72
DRAWN		SCALE 1" = 30'
OWNER NELSON DEVELOP. 1075 N. MAIN ST. ORANGE, CALIF.		JOB 943-2
BY J.W. SCHULE & ASSOC. 532-1659 1075 N. MAIN ORANGE		SHEET
SCALE 1" = 30'	CASE NO. SPA 2472	OF SHEETS
DATE 6-18-72		

PRINTED ON 170 MG. TYPHOGRAPH