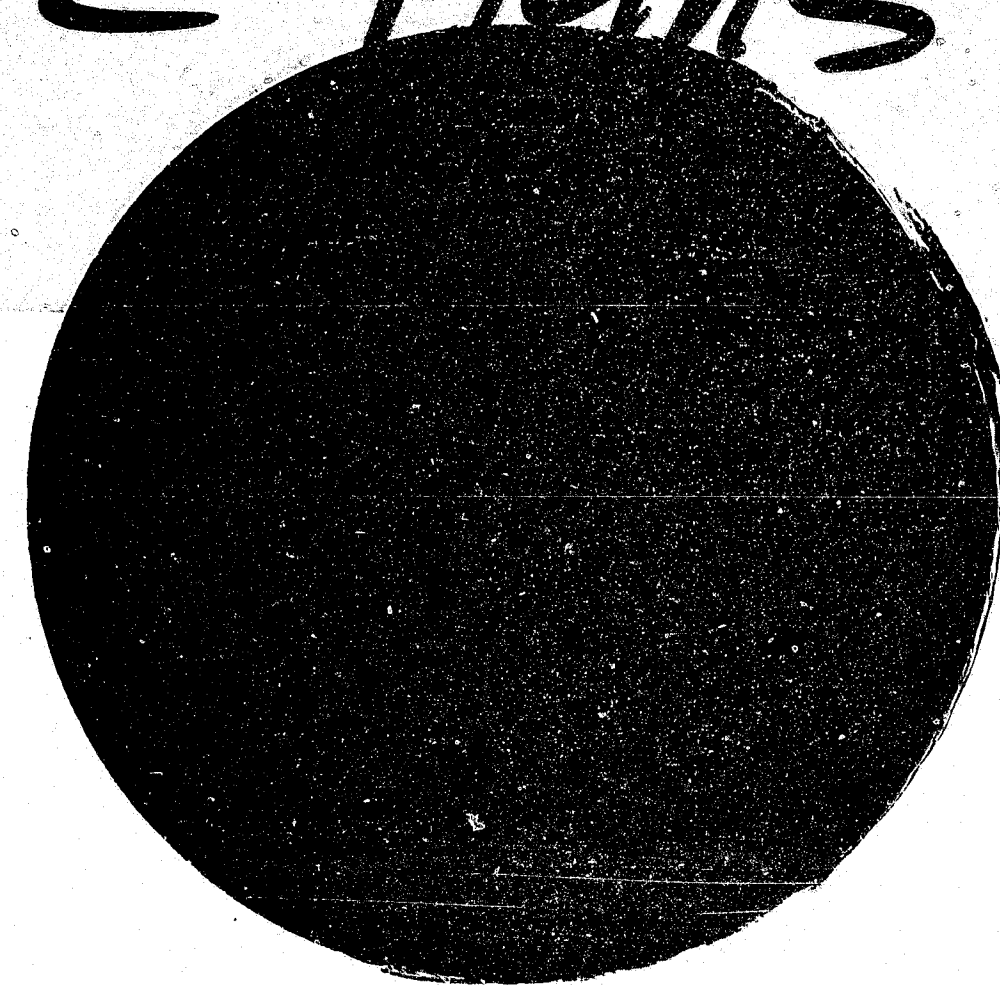


16X

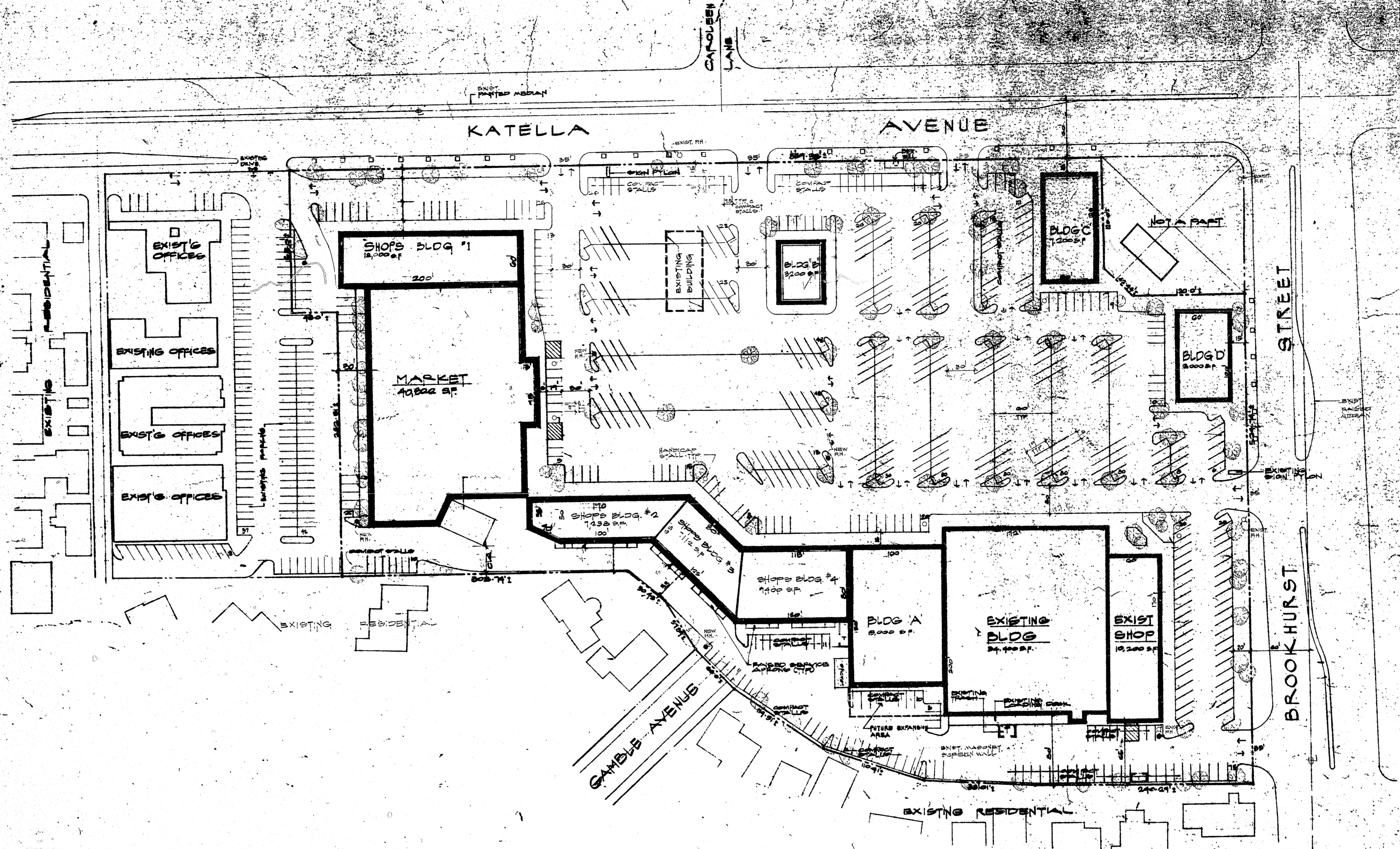
SP-132-82 Plans



16X

SP-132-82 Plans

30X



SP-132-82

SUMMARY
 SITE AREA: 513,044 sq. ft. ACRES: 11.82±
 BLDG AREA: 132,572 sq. ft. RATIO: 2.57:1
 PARKING: TOTAL STALLS: 475 PER 1000 sq. ft. 4.75
 COMPACT STALLS: 195
 HANDICAP STALLS: 10
 PARKING AREA: 302,172 sq. ft.
 LANDSCAPING AREA: 55,470 sq. ft. 9.8% OF TOTAL PARKING AREA

OFFICIAL COPY
 DEC 2 1982
 SP-132-82
 40
 CASE FILE
 COPY

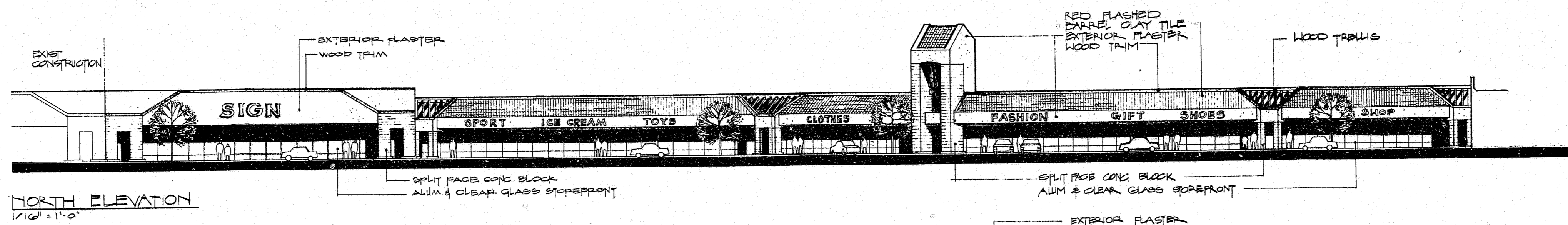
REVISIONS BY

GARDEN GROVE TOWNE CENTER
 GARDEN GROVE, CALIFORNIA

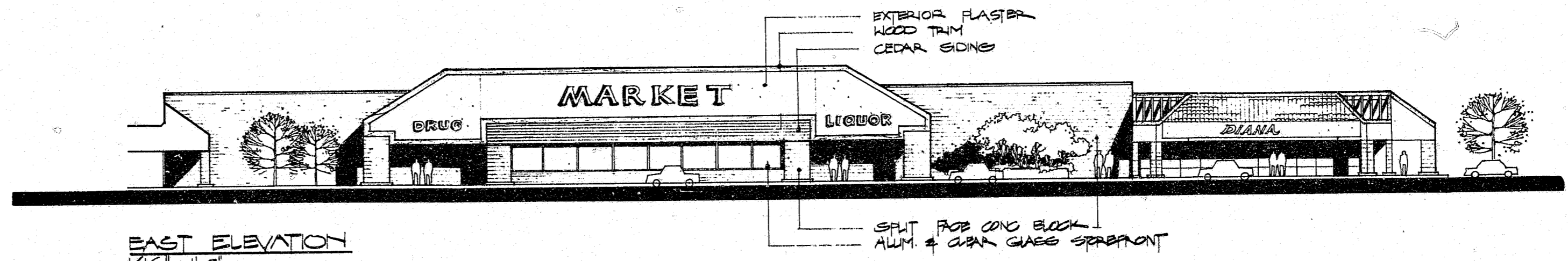
herbert nadel, o.a.
 and partners
 architects

13

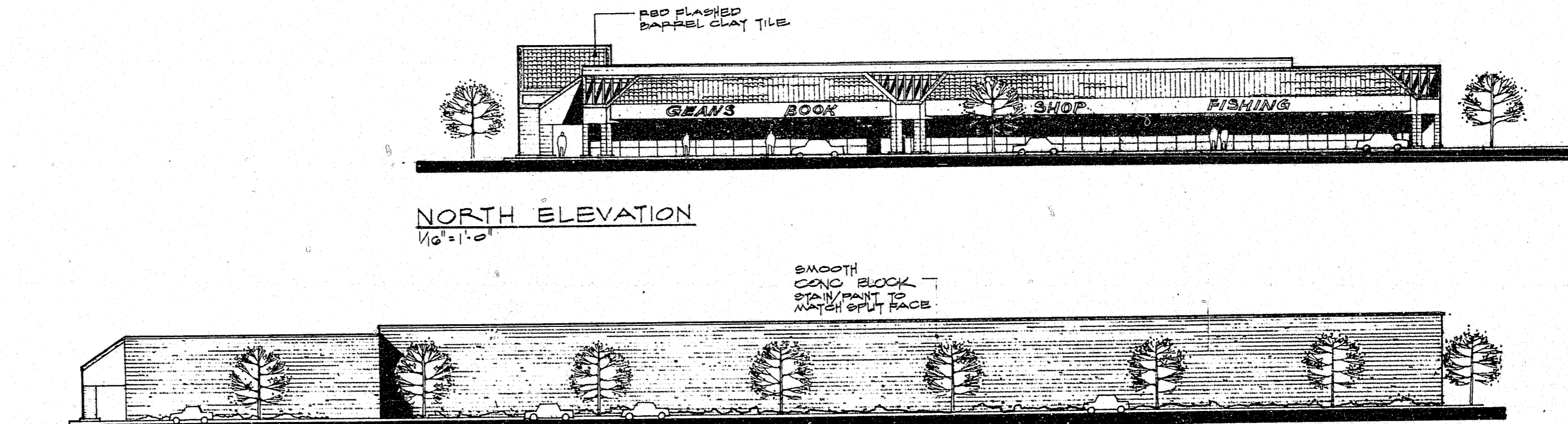
30X



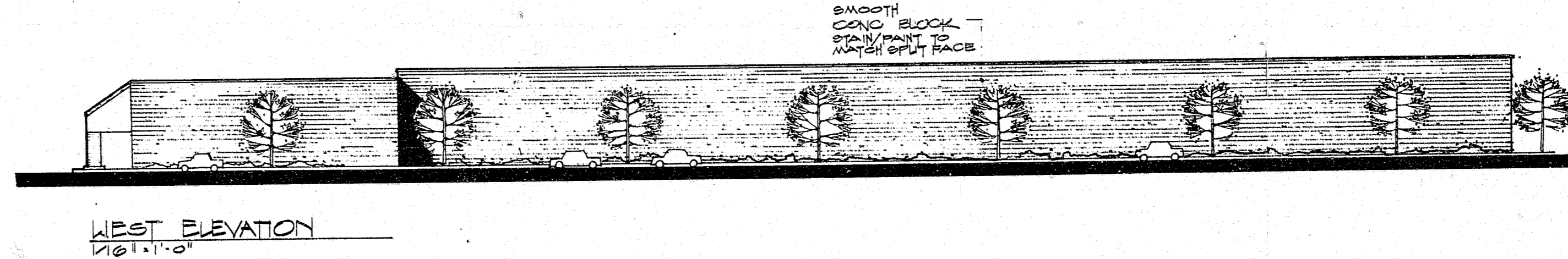
NORTH ELEVATION
1/8" = 1'-0"



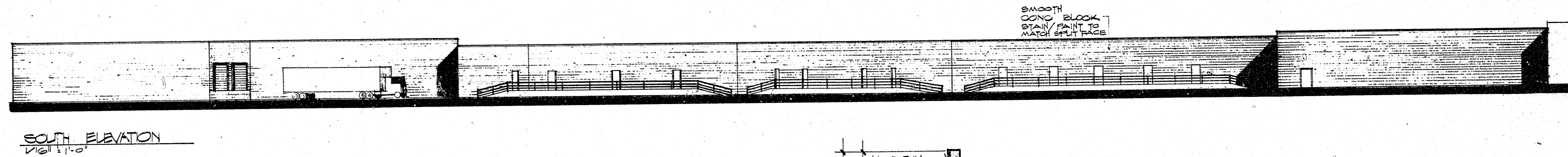
EAST ELEVATION
1/8" = 1'-0"



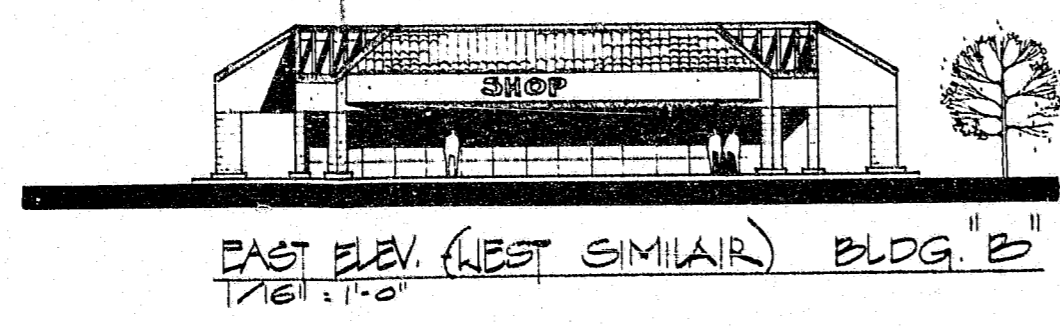
NORTH ELEVATION
1/8" = 1'-0"



WEST ELEVATION
1/8" = 1'-0"



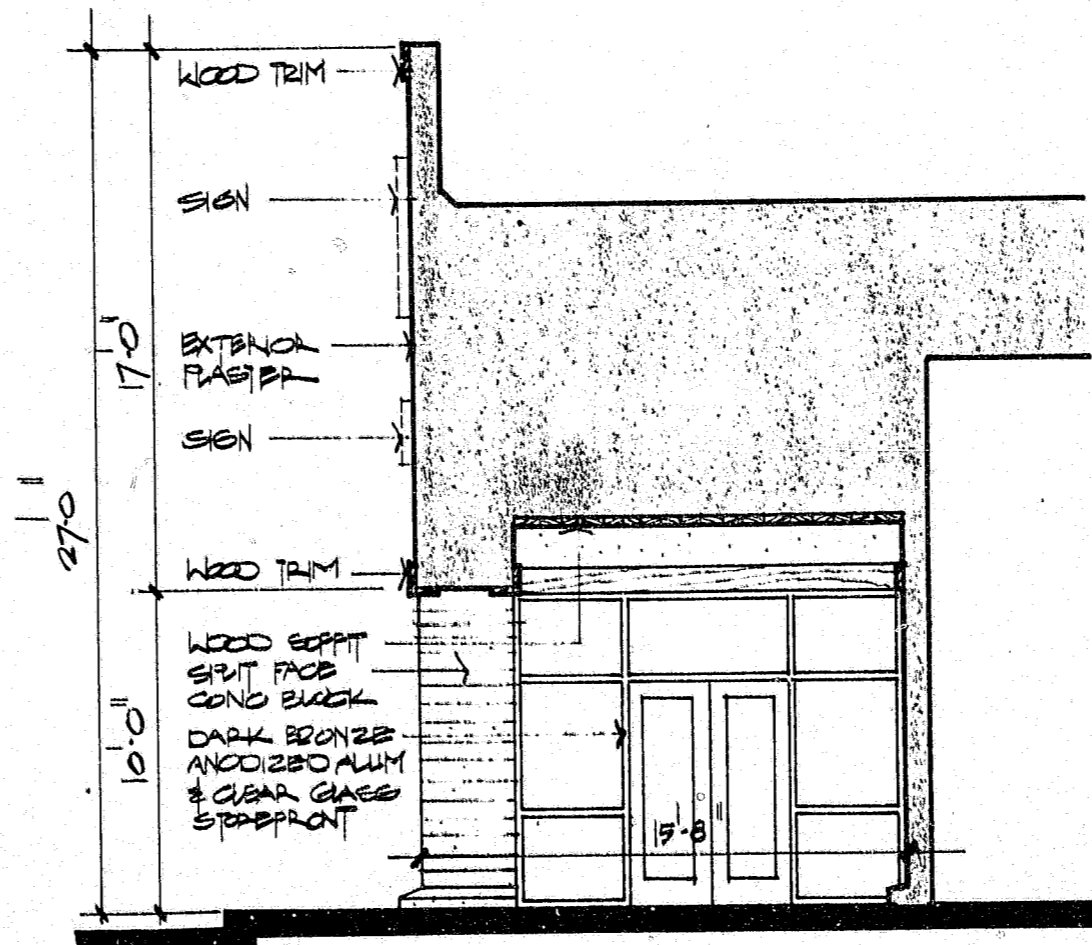
SOUTH ELEVATION
1/8" = 1'-0"



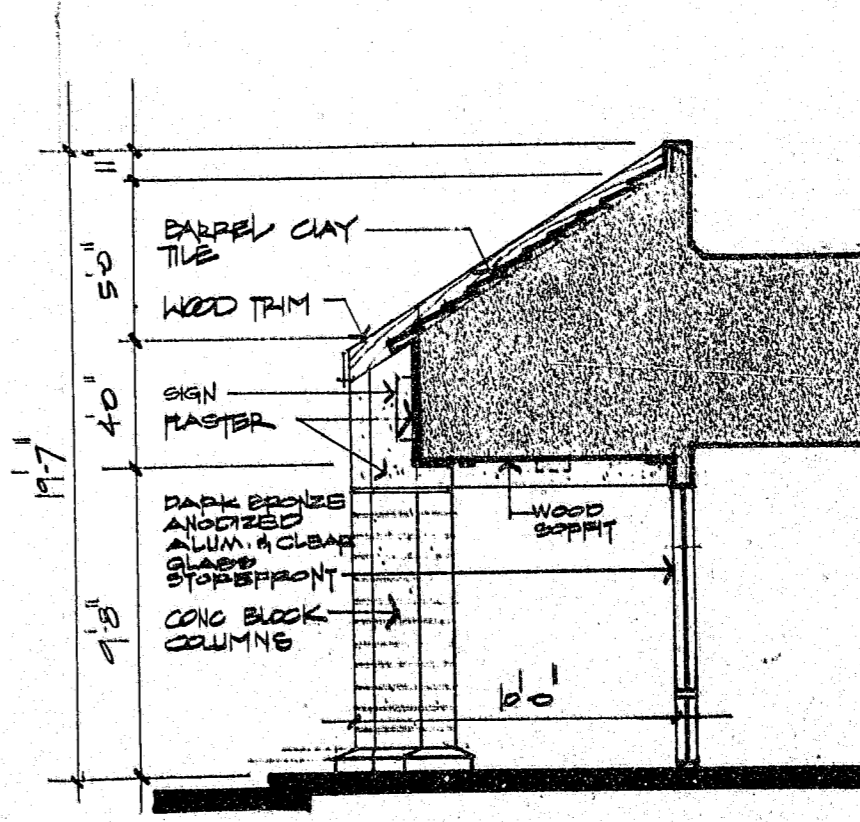
EAST ELEV. (WEST SIMILAR) BLDG. "B"
1/8" = 1'-0"



NORTH ELEV. (SOUTH SIMILAR) BLDG. "B"
1/8" = 1'-0"



CANOPY SECTION THRU MARKET
1/8" = 1'-0"



CANOPY SECTION THRU SHOPS
1/8" = 1'-0"

REVISIONS	BY

FOR: PICKER-WARMINGTON DEVELOP.
8090 HILLMAN STREET
COSTA MESA, CALIFORNIA 92626
(714) 966-1333

GARDEN GROVE TOWN CENTER
CALIFORNIA
GARDEN GROVE

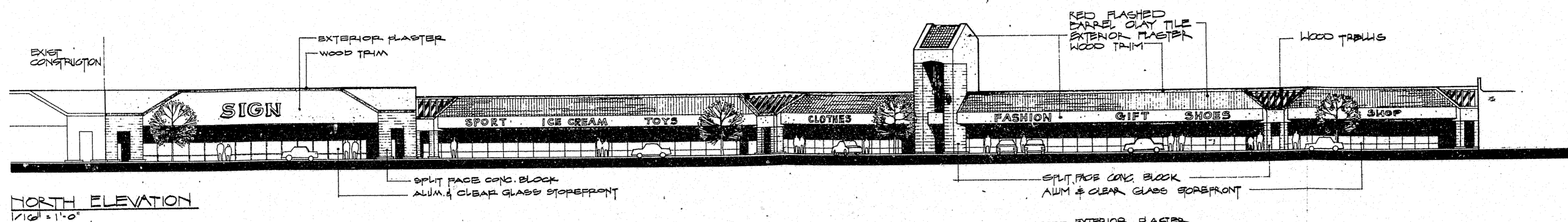
herbert nadel, aia,
and partners
architects

DATE	10-21-82
SCALE	As Noted
DRAWN	W.C.
JOB	00-103
SHEET	1 of 2

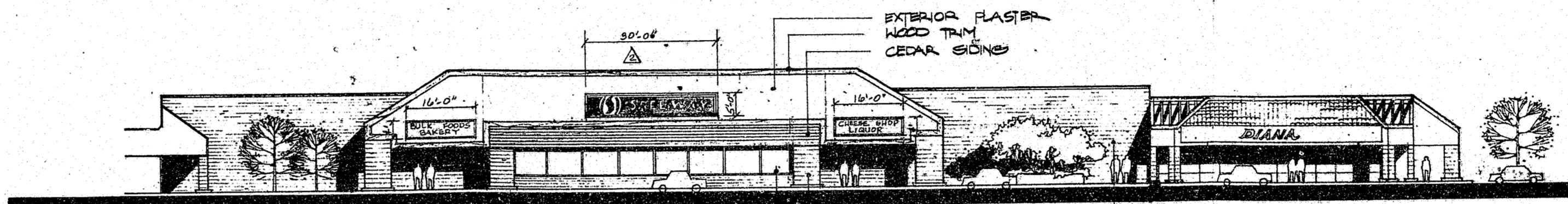
SP-132-82

ALL DRAWINGS AND WRITTEN MATERIAL APPEARING HEREIN CONSTITUTE THE ORIGINAL AND UNPUBLISHED WORK OF THE ARCHITECT AND THE SAME MAY NOT BE REPRODUCED, COPIED, OR ENCLOSED WITHOUT THE WRITTEN CONSENT OF THE ARCHITECT. COPYRIGHT HERBERT NADEL & PARTNERS ALL RIGHTS RESERVED.

30X



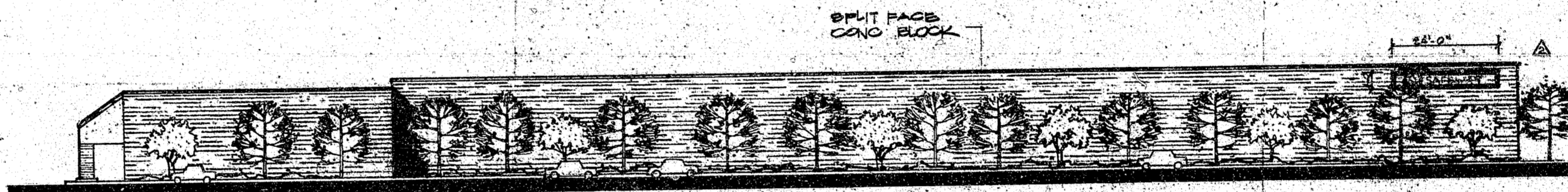
NORTH ELEVATION
1/8" = 1'-0"



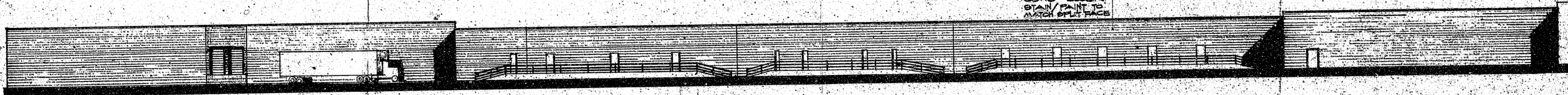
EAST ELEVATION
1/8" = 1'-0"



NORTH ELEVATION
1/8" = 1'-0"



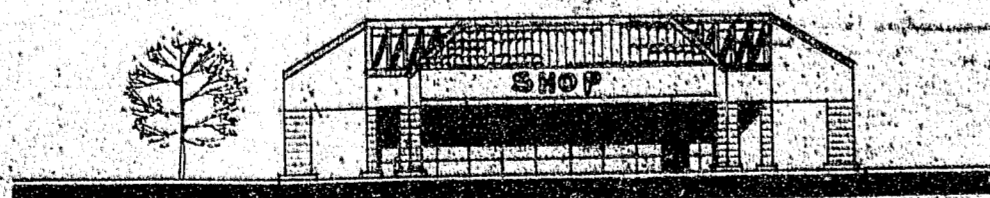
WEST ELEVATION
1/8" = 1'-0"



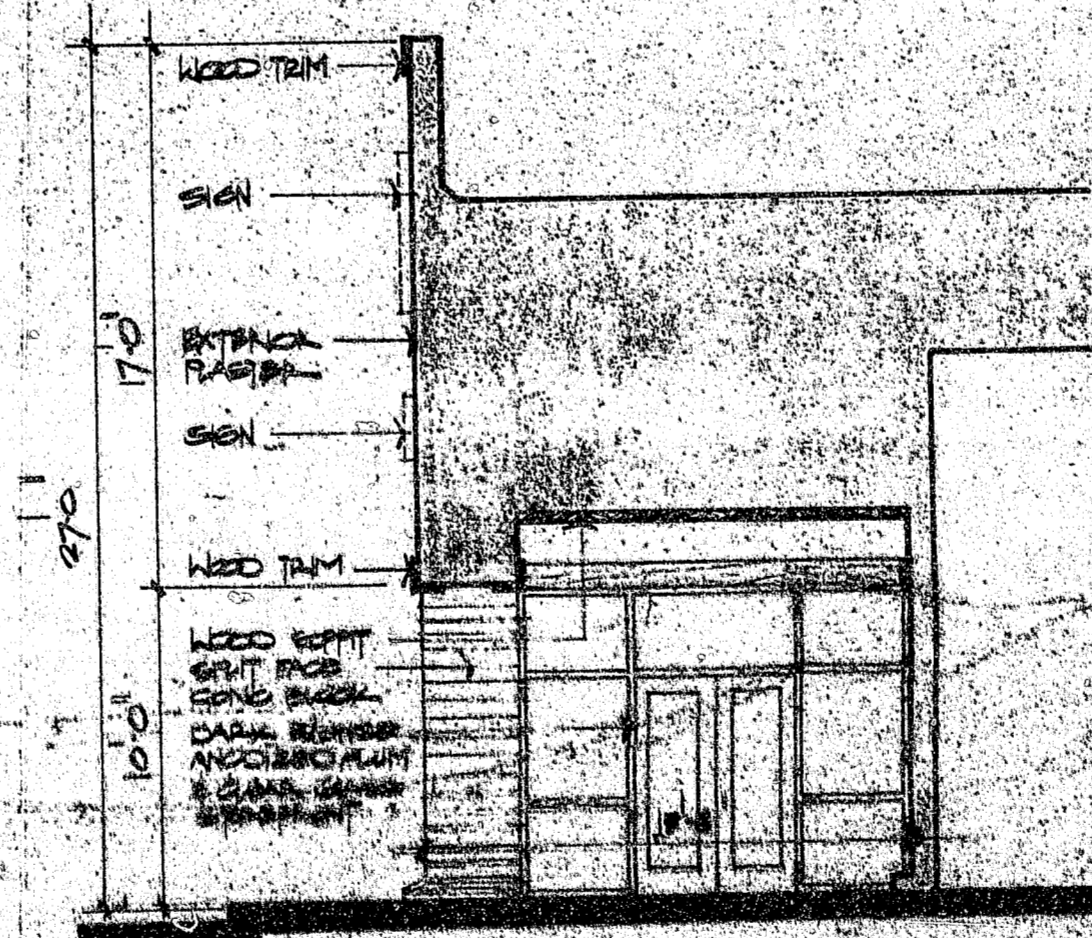
SOUTH ELEVATION
1/8" = 1'-0"



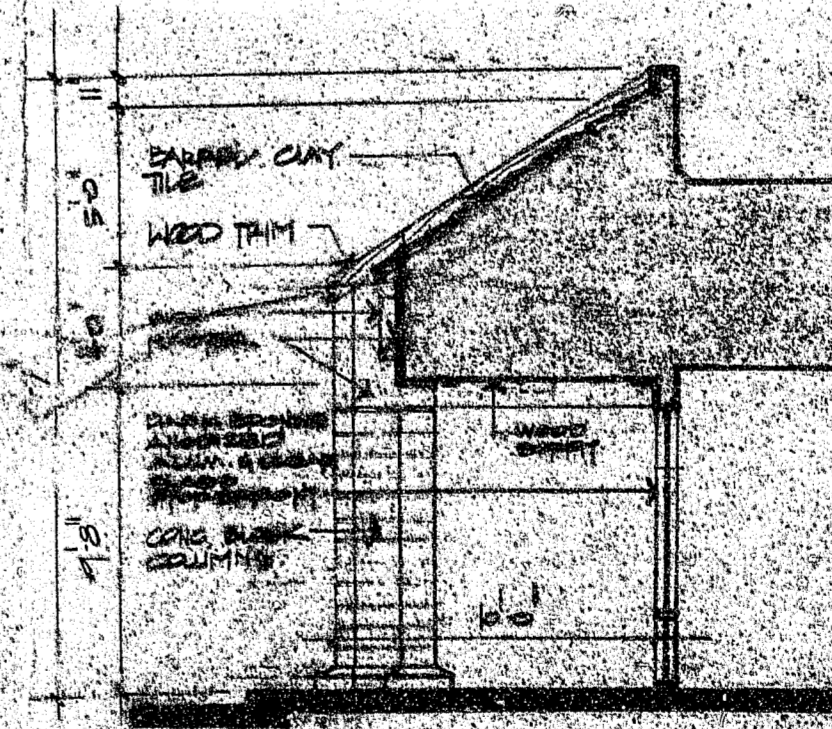
EAST ELEV. (WEST SIMILAR) BLDG. "B"
1/8" = 1'-0"



NORTH ELEV. (SOUTH SIMILAR) BLDG. "B"
1/8" = 1'-0"



CANOPY SECTION THRU MARKET
1/8" = 1'-0"



CANOPY SECTION THRU EAVES
1/8" = 1'-0"

REVISIONS	BY
10-21-82	A.B.
11-22-83	M.C.

DICKER-WASHINGTON DEVELOP.
2000 MILLIKIN STREET
SANTA ANA, CALIFORNIA 92705
(714) 966-1833

GARDEN GROVE TOWN CENTER
GARDEN GROVE, CALIFORNIA

he model, photo and paintings
and paintings architects

RECEIVED
RUSH CROSS
SERVING ARCHITECTS
AIA AND PARTNERS

SP-132-82