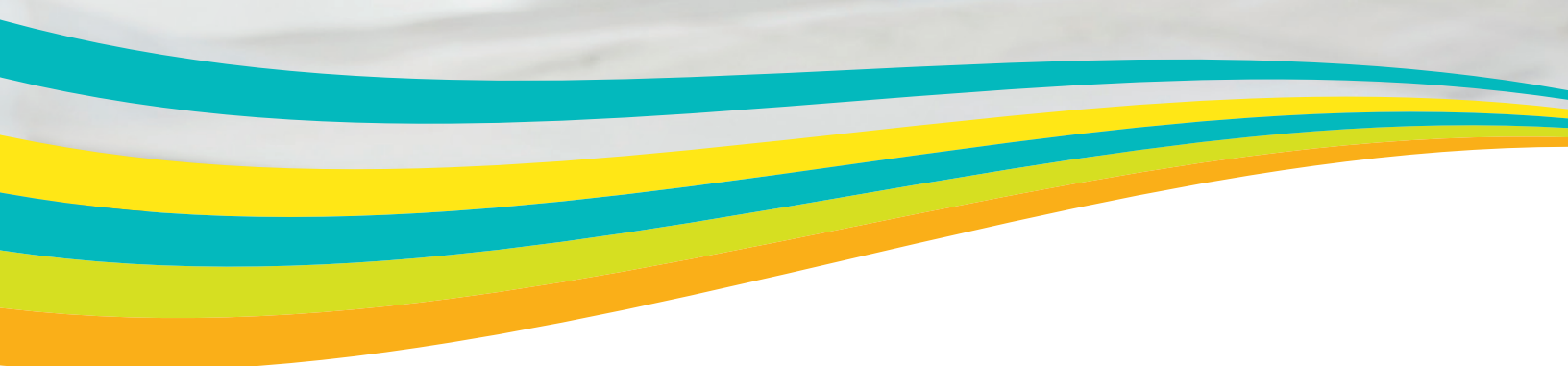


Xerox® WorkCentre®
5945/5955
Tabloid-size
Black-and-white
Multifunction Printer



Xerox® WorkCentre® 5945/5955 Multifunction Printer

Office productivity simplified.





The true value of your office technology investment isn't always in plain sight. It's what it does in the background to help you be more productive and work the way you want. The Xerox® WorkCentre® 5945/5955 gives you that power, improving day-to-day capabilities and helping you work more nimbly, cost effectively and securely – so you can focus on what matters most to your business.



Productivity that will surprise you.

It's not just about getting work done. It's about being productive, flexible and reliable on a consistent basis. The Xerox® WorkCentre® 5945/5955 gives you the ability to do just that with a powerful mix of features and capabilities that help you go above and beyond for your workplace – today and every day.

- **Always up to speed.** The changing pace of your workplace means you need to be able to switch gears on the fly. The WorkCentre 5945/5955 helps you turn out great work at an impressive copy and print rate of 45 to 55 ppm. It's more than enough speed to keep any workgroup up to speed.
- **Ultra fast single-pass duplex scanning.** At up to 200 images per minute, you'll enjoy incredibly fast single-pass color duplex scanning for more impressive color communications and quick electronic distribution.
- **Scanning customized to your workflow.** Create a dedicated, easy-to-use scan button on your device's color touchscreen interface using the Single Touch Scan feature. Each Single Touch Scan button you create can be assigned its own scanning workflow for fast document distribution and archiving.
- **Print more, longer.** A 4,700 sheet paper capacity means longer runs with fewer interruptions. Plus, multiple finishing options give you added flexibility for both simple and complex jobs.
- **Exceptional print and copy quality.** Experience true 1200 x 1200 dpi using the latest Xerox® Emulsion Aggregation (EA) Toner.
- **Print from and scan to any USB memory device.** Enjoy walk-up simplicity and faster document delivery – even when you're not at your computer.
- **Customize your solutions.** Xerox Extensible Interface Platform® Serverless technology allows creation of applications to run on Xerox® devices built on Xerox® ConnectKey® Technology without the need for additional IT infrastructure. This allows you to simplify and personalize the usability of your device with a range of capabilities from support applications to scanning.



Effortless Maintenance

The Xerox® WorkCentre 5945/5955 was designed with ease-of-use in mind. Routine maintenance is streamlined by the completely accessible paper path. No need to call tech support.

All printers have components that eventually wear out. Simple slide-in, slide-out replacement keeps you up and running. And as a result of advanced technology, there are fewer consumables in the end.



Simplicity never looked easier.

Turn complexity into a higher level of simplicity. The Xerox® WorkCentre® 5945/5955 gives you the right tools – so you can focus on work that really matters.

Conservation Built-in

Get a powerful multifunction printer that includes a number of environmental features.

- Power save with quick start-up conserves electricity during downtime while keeping the device ready for action.
- Full compliance with the EU Restriction of Hazardous Substances (RoHS) Directive, Environmental Choice and meets or exceeds ENERGY STAR® v2.0.
- Multiple print settings are available that allow for reduced impact on the environment. Options include default two-sided printing, proof print, printing on recycled paper and draft mode.
- Our innovative Earth Smart print driver settings let you select the most environmentally conscious print options.

- **Intuitive, easy-to-use color touch screen.** Control your workflow with ease right from your home screen interface using the bright intuitive icons and functions Xerox® devices are known for.
- **Less user intervention.** More uptime. Longer lasting toner delivers greater efficiency and superior image quality and can be replaced by any user. A great way to cut down on unnecessary service calls and job interruptions.
- **Quick and easy, step-by-step assistance.** Our help desk is always at your fingertips with help videos that you can access right on the user interface.
- **Install, upgrade and manage devices from a single print driver.** Xerox® Global Print Driver® provides a consistent, easy-to-use interface that allows IT administrators to monitor and manage Xerox® and non-Xerox devices while reducing support calls and simplifying print services management.
- **Simplify everyday office tasks with advanced copy and print features.** Enjoy plenty of support for specialized print applications including Annotation, Bates Stamping, ID Card Copy and page-level programming.
- **User comfort and consistency.** Because it uses the same controller technology as our other current multifunction printers, the Xerox® WorkCentre® 5945/5955 delivers a consistency and comfort level users look for and appreciate. For more information about our groundbreaking Xerox® ConnectKey® Technology, visit www.connectkey.com.



Work more securely than ever before.

Feel safe. Be confident. The Xerox® WorkCentre® 5945/5955 boasts the most complete range of advanced security features and technology from security-industry leaders, ensuring comprehensive, 24/7 protection of your most sensitive data.

- **Protect against data breaches.** Compliant with the 256-bit AES FIPS 140-2 standard, the WorkCentre 5945/5955 safeguards all sensitive data with encrypted PDF files for scanning and hard drive encryption. You can also ensure total deletion of all data fragments with a 3-pass image overwrite feature.
- **Keep unauthorized users out.** Xerox user permissions, network authentications, IP filtering and smart card features ensure that only authorized users have access to the device.
- **Keep a step ahead of security threats.** Xerox proactively monitors security clearinghouses for new threats as they emerge and provides patches when needed. This ensures that your device's security is current and your data is safe. In addition, you can receive up-to-the-minute RSS feeds and stay informed via www.xerox.com/security.
- **Stay current and compliant.** Whether you work in government, finance or healthcare or other industry, WorkCentre 5945/5955 devices comply with the latest security standards including Common Criteria (undergoing evaluation), HIPAA, Data Protection Act, COBIT and more.
- **Achieve total visibility.** By providing total visibility into your device and network, the WorkCentre 5945/5955 prevents IP theft and ensures non-repudiation. With security policy management and tracking of all activity on the device with Audit Log, you can know who accessed what, when and details of most interactions with the device.



Powerful Partnerships

The WorkCentre 5945/5955 includes McAfee® technology integration, resulting in the industry's first lineup of multifunction printers that protect themselves from potential outside threats. McAfee's whitelisting technology ensures only safe, pre-approved files or functions are executed on your devices, minimizing the need to manually update software levels against new security threats. Also, seamless integration with the Xerox® Managed Print Services toolset and McAfee ePolicy (ePO) allows for easy tracking and monitoring.

Plus, automatic Cisco® TrustSec Identity Services Engine (ISE) integration provides comprehensive visibility of all Xerox® ConnectKey® enabled MFPs' endpoints to enforce IT-centric security policies and compliance.



Be ready, wherever business takes you.

In today's workplace, you need access to your technology anywhere, anytime.

Our mobile solutions empower today's professionals with the freedom and flexibility to get work done in the office – and on the go.

Keep pace with your business – wherever it takes you.

- **Be free with optional Wi-Fi connectivity.** Keep workers connected to devices anywhere, without the need for hard-wire cabling and connections.
- **Apple® AirPrint™.** Print email, photos and important office documents directly from your Apple iPhone® or iPad® with no drivers to install and no cables to connect. With AirPrint, your iPhone or iPad automatically locates and connects to the AirPrint-enabled WorkCentre 5945/5955 over your office Wi-Fi network.
- **Xerox® Mobile Print, and more.** Take the mystery and anxiety out of wireless and mobile device printing. Xerox has all the options to enable secure, accurate printing from most mobile devices, to any printer or multifunction printer, regardless of brand. Get industry-leading accuracy when printing native PowerPoint®, Word® and other standard files. Plus, Xerox offers IT-friendly optional

capabilities such as PIN code access, multiple mobile operating systems and more. Whether offsite or onsite, learn more about why Xerox is the only choice for today's mobile professionals by visiting www.xerox.com/mobile.

- **Remote Control Panel.** Remotely and securely operate the WorkCentre 5945/5955 control panel from any office PC as though you were standing at the device. The Remote Control Panel allows IT staff to remotely view and control the user interface and makes it easier and more convenient to train users. And during a remote session, walk-up users are notified at the device to prevent simultaneous system changes. Plus, advanced print drivers and free device management tools let you remotely monitor real-time performance and available resources for greater uptime.
- **Mopria™ certified.** Mopria certification simplifies the mobile printing experience for tablets and smartphones to many printing devices, including the WorkCentre 5945/5955.

Extend Your Possibilities

Whether scanning and managing documents on your office network or a hosted cloud on the Internet, you can access scan workflow solutions right from any WorkCentre 5945/5955 thanks to the power of Xerox® Workflow Solutions*, built on our Xerox Extensible Interface Platform®.

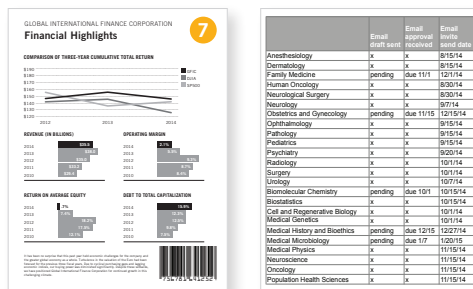
- **Xerox® ConnectKey® for SharePoint® or Xerox® ConnectKey® for DocuShare®.** Scan files directly into Microsoft® SharePoint or Xerox® DocuShare® and other Windows® folders. Plus, you'll go beyond basic file storage and PDF creation by automatically converting documents to intelligent, structured data with easy file naming and routing tools.
- **Xerox® ConnectKey® Share to Cloud.** Our cloud-based scanning solution provides easy, secure, scalable scanning to popular cloud-based repositories such as Google Docs™, Salesforce.com, Office 365 and Dropbox™, using custom-designed workflows that leverage our Xerox Extensible Interface Platform technology. Learn more about Xerox® Workflow Solutions at www.office.xerox.com/software-solutions.

* Optional solutions may vary by geography.



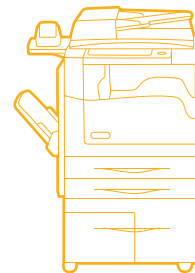
- 1 The optional Convenience Stapler staples up to 50 sheets of paper (Work Surface included).
- 2 Single-pass Automatic Document Feeder automatically scans color or black-and-white documents as fast as 200 images per minute (duplex speed).
- 3 100-sheet Bypass Tray handles heavy paper up to 80 lb. cover.
- 4 Two 500-sheet universal trays are adjustable up to 11 x 17 in.
- 5 Optional Envelope Kit (replaces Tray 2) provides trouble-free feeding of 50 envelopes.
- 6 High Capacity Tandem Tray holds a total of 3,600 sheets of letter-size paper.

- 7 Xerox® Emulsion Aggregation (EA) Toner provides superior sharpness, crisp text, smooth gradients and deep rich blacks, along with consistent, fine detail for reports, invoices, bar codes drawings and more.

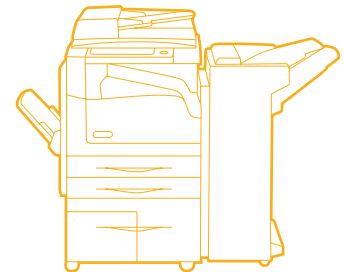


Finishing Options

Multiple finishing options let you add the capabilities that are right for individual workgroups. Choose basic features like staple and hole punch, or advanced capabilities to produce paginated, saddle-stitched and folded booklets.

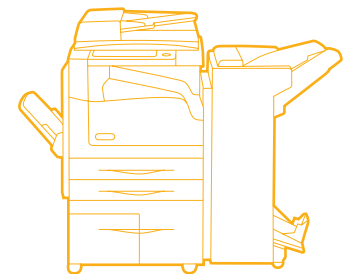


Center Offsetting Tray
Stack up to 400 sheets.



Office Finisher

Get 50-sheet multiposition (single/dual) variable-length stapling and optional 2/3-hole punching. Offset stacking up to 2,000 sheets.



Office Finisher with Booklet Maker

Add booklet making capabilities with the Office Finisher with Booklet Maker. Create booklets with up to 15 sheets, either creased or saddle-stitched.

Xerox® WorkCentre® 5945/5955 Optimized for:



Productivity



Scanning



Security



Networking



Solutions



Wi-Fi

The WorkCentre 5945/5955 Multifunction Printer is built on Xerox® ConnectKey® Technology. For more information, go to www.connectkey.com.

Device Specifications		WorkCentre 5945	WorkCentre 5955
Speed		Up to 45 ppm Letter (A4) / Up to 31 ppm 11 x 17 in. (A3)	Up to 55 ppm Letter (A4) / Up to 31 ppm 11 x 17 in. (A3)
Duty Cycle ¹		Up to 175,000 pages / month	Up to 200,000 pages / month
Hard Drive / Processor / Memory		Minimum 250 GB / 1 GHz Dual-core / 2 GB	
Connectivity		10/100/1000Base-T Ethernet, High-Speed USB 2.0 direct print, Optional Wi-Fi (with Xerox® USB Wireless Adapter)	
Controller Features		Unified Address Book, Remote Control Panel, Online Support (accessed from the user interface and print driver), Configuration Cloning	
Copy and Print			
Copy and Print Resolution		Copy: Up to 600 x 600 dpi; Print: Up to 1200 x 1200 dpi	
First-copy-out Time		As fast as 3.7 seconds from the Platen / 7.6 seconds from the Automatic Document Feeder	
Page Description Languages		Adobe® PostScript® 3™, PDF, PCL 5c / PCL 6, XML Paper Specification (XPS®) (Optional)	
Print Features		Print from USB, Earth Smart Driver Settings, Job Identification, Booklet Creation, Store and Recall Driver Settings, Bi-directional Status, Scaling, Job Monitoring	
Mobile Printing		Apple® AirPrint™, Xerox® PrintBack, Xerox® Mobile Print (Optional), Xerox® Mobile Print Cloud (Optional), Mopria™ certified, Xerox® Print Service (plug-in for Android™)	
Scan	Standard	Destinations: Scan to Mailbox; Scan to USB, Scan to Email, Scan to Network; File Formats: PDF, PDF/A, XPS, JPEG, TIFF; Convenience Features: Scan to Home, Single Touch Scan, Searchable PDF, Single/Multi-Page PDF / XPS / TIFF, Encrypted / Password Protected PDF, Linearized PDF / PDF/A	
	Optional	Software Packages: ConnectKey® for SharePoint®, ConnectKey® for DocuShare®, ConnectKey® Share to Cloud, Xerox® Scan to PC Desktop® Professional, other solutions available through various Xerox Business Innovation Partners	
Fax	Standard	Internet Fax, Fax Build Job, Network Server Fax Enablement	
	Optional	Fax Forward to Email or SMB, Walk-up Fax (one-line and two-line options, includes LAN Fax, Fax Forward to Email or SMB, Walk-up Fax)	
Security	Standard	McAfee® Embedded, McAfee ePolicy (ePO) Compatible, HDD Overwrite, 256-bit Encryption (FIPS 140-2 compliant), Common Criteria Certification (ISO 15408) ² , Secure Print, Secure Scan, Secure Email, Cisco® TrustSec Identity Services Engine (ISE) Integration, Network Authentication, SSL, SNMPv3, Audit Log, Access Controls, User Permissions	
	Optional	McAfee Integrity Control, Xerox Secure Access Unified ID System®, Smart Card Enablement Kit (CAC/PIV/.NET)	
Accounting	Standard	Xerox® Standard Accounting (Copy, Print, Scan, Fax, Email), Network Accounting Enablement	
	Optional	Equitrac Express®, Equitrac Office®, Equitrac Professional®, YSoft® SafeQ®, other network accounting solutions available through various Xerox Business Innovation Partners	
Paper Input	Standard	Single-pass Automatic Document Feeder: 200 sheets; Speed: up to 200 ipm (duplex); Sizes: 4.9 x 5 in. to 11.7 x 17 in. / 125 x 138 mm to 297 x 432 mm Bypass Tray: 100 sheets; Custom sizes: 4.25 x 5.5 to 11 x 17 in. / A6 to A3, 16 lb. bond to 80 lb. cover / 60-216 gsm Trays 1-2: 500 sheets each; Custom sizes: 5.5 x 8.5 to 11 x 17 in. / A5 to A3 High Capacity Tandem Tray: 3,600-sheets total (1,600 and 2,000 sheets); Size 8.5 x 11 in. / A4	
	Optional	Envelope Tray Kit (replaces Tray 2): Up to 50 envelopes: #10 commercial, monarch, DL, C5	
Paper Output / Finishing	Choose One:	Center Offsetting Tray: 400 sheets Office Finisher: 2,000 + 250-sheet trays, 50-sheet multi-position stapling, optional hole punch Office Finisher with Booklet Maker: 2,000 + 250-sheet trays, 50-sheet multi-position stapling, saddle-stitch booklet making, optional hole punch, saddle-stitch and fold up to 40 booklets, 2-15 sheets	
	Optional	Hole Punch for Office Finisher Convenience Stapler: 50-sheet stapling (based on 20 lb. bond), includes Work Surface	

¹ Maximum volume capacity expected in any one month. Not expected to be sustained on a regular basis.; ² Undergoing evaluation

Other Awards



BLI 2013 Outstanding Achievement in Innovation Award for Xerox® ConnectKey® Share to Cloud

[Article](#) [Certificate](#)



BLI 2013 Pick of the Year Award for Xerox® Mobile Print Cloud – Outstanding Small Business Mobile Print Solution

[Article](#) [Certificate](#)



BLI 2014 Pick of the Year Award for Xerox® Mobile Print Solution – Outstanding Enterprise Mobile Print Solution

[Article](#) [Certificate](#)



BLI 2014 Document Imaging Solutions Line of the Year Award

[Article](#) [Certificate](#)

For more detailed specifications, go to www.xerox.com/office/WC5945-5955Specs. Build and configure your own Xerox® WorkCentre 5945/5955 Multifunction Printer at www.buildyourownxerox.com/connectkey.

