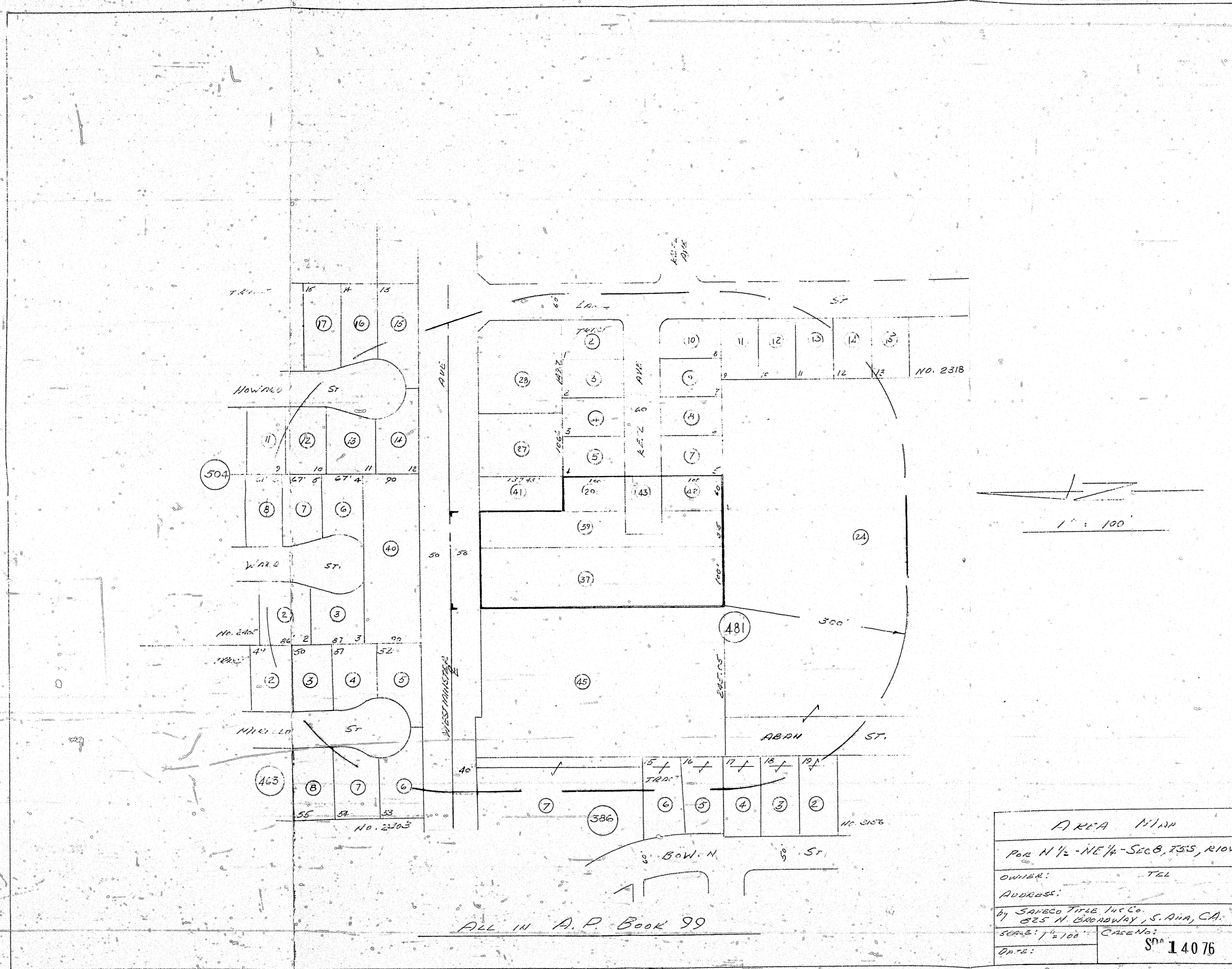


SPA-140-76

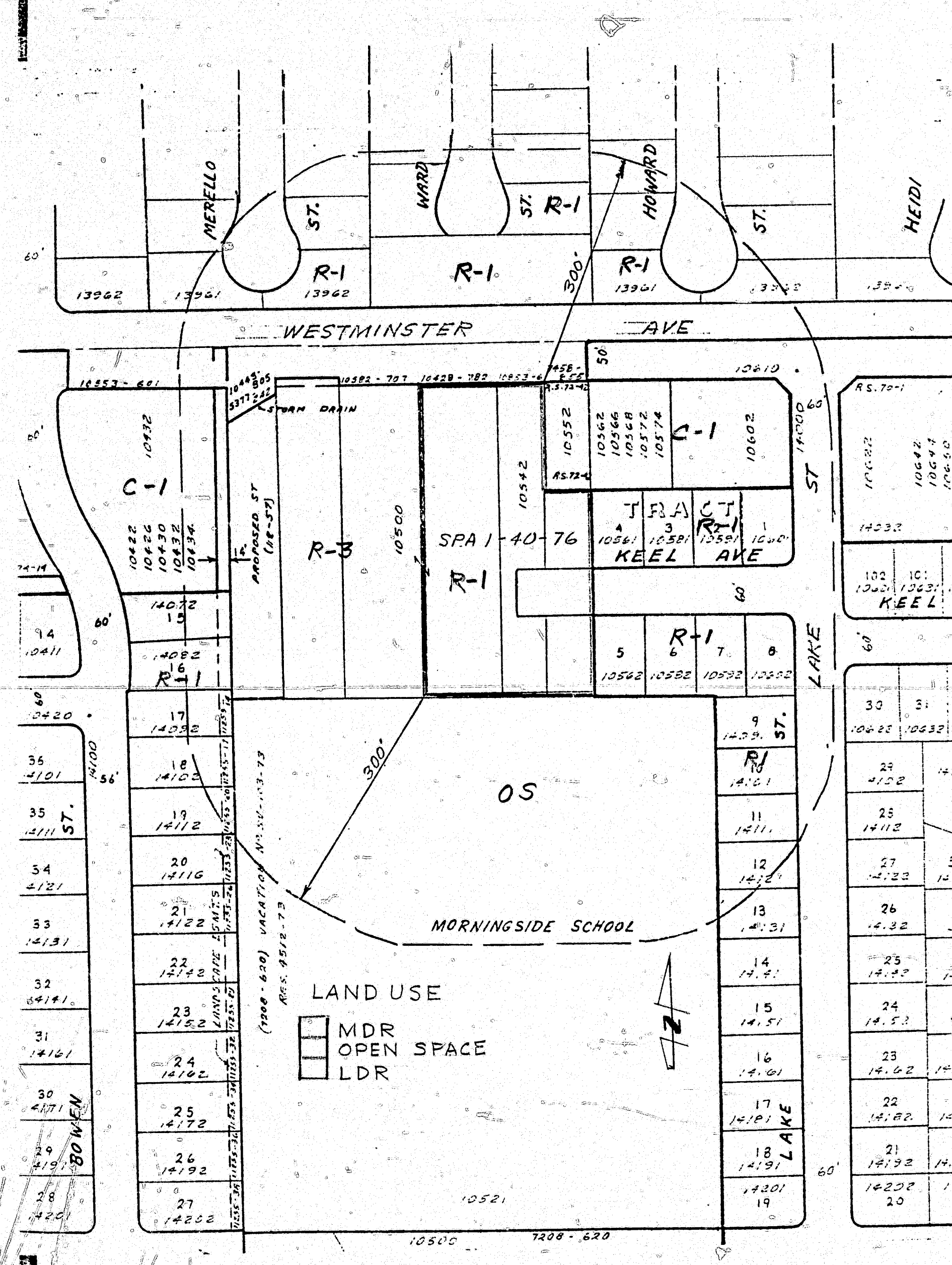
|

019
017



ALL IN A.P. BOOK 99

AREA 14134	
FOR N 1/2 - NE 1/4 - SEC 8, T35S, R10W	
OWNER:	TEL
ADDRESS:	
by SANCO TITLE INS CO.	
825 N. BROADWAY, S. ANA, CA.	
500-217-2100	CRP No.
DATE:	SP ⁿ 14076

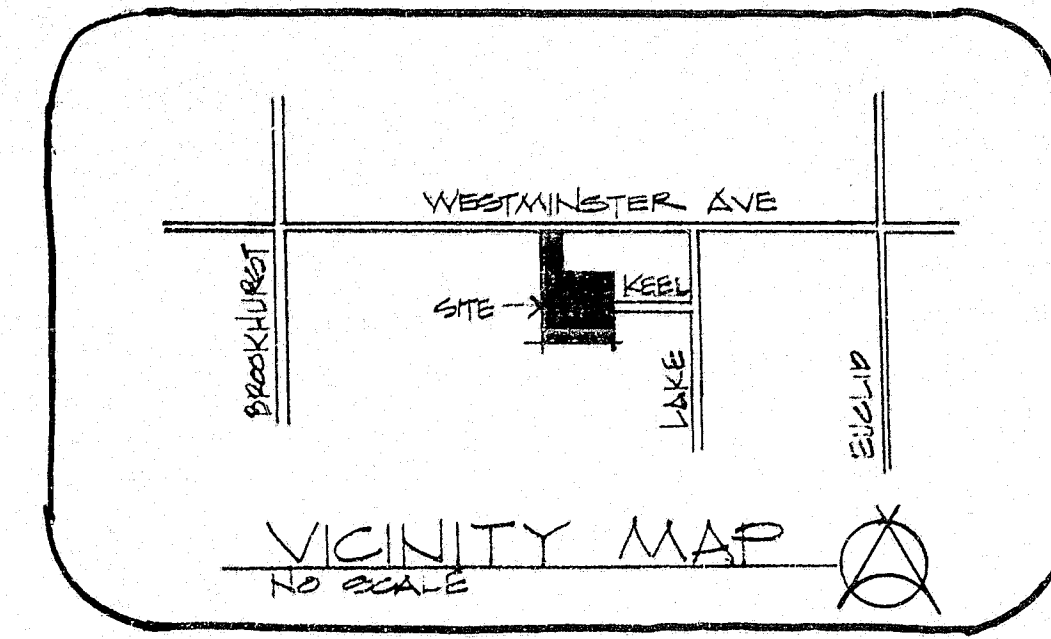


LAND USE
 MDR
 OPEN SPACE
 LDR



ROBIN MEADOWS

A CLAYTON · HYTER PROJECT



TABULATION

UNITS :

- (A) ONE BEDROOM = 763 S.F. = 10 UNITS
- (B) TWO BEDROOM = 920 = 20 UNITS
- TOTAL = 30 UNITS

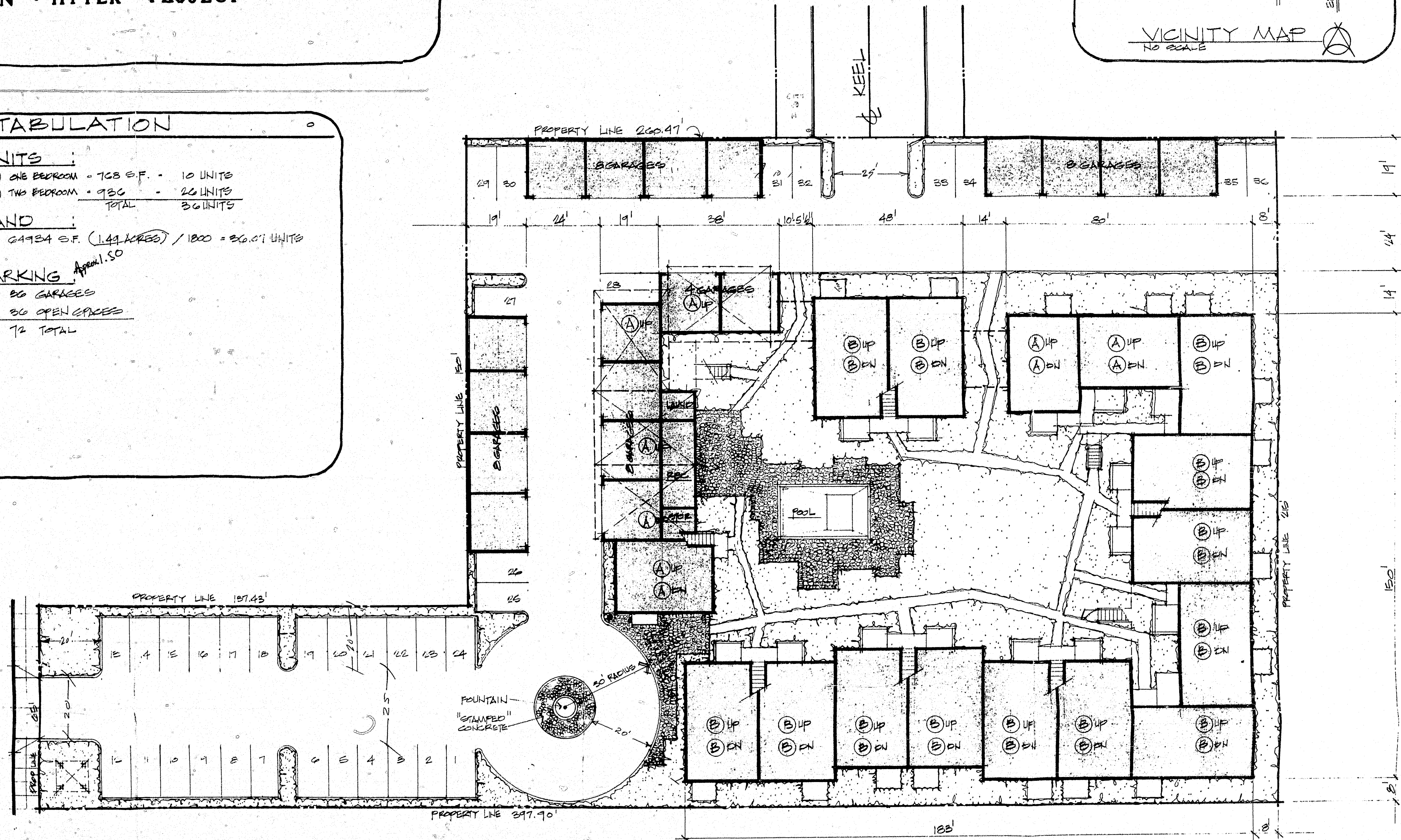
LAND :

24924 S.F. (1.44 ACRES) / 1800 = 26.07 UNITS

PARKING ^{APPROX. 50}

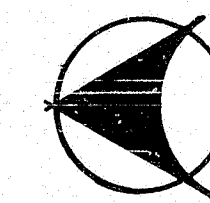
- 20 GARAGES
- 30 OPEN SPACES
- 72 TOTAL

WESTMINSTER



SITE PLAN

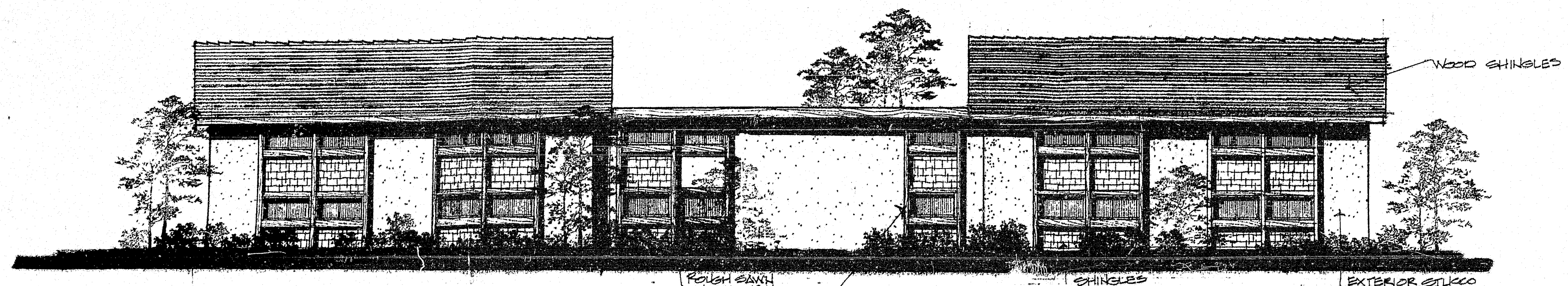
1/4" = 1'-0"



OFFICIAL COPY

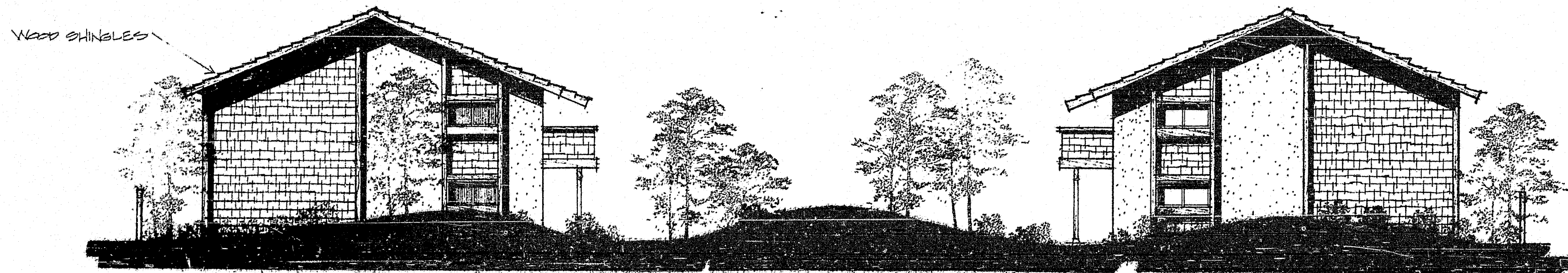
WILLIAM F. REED, AIA
 ARCHITECT · PLANNER
 222 FARMER LANE
 TUBSTIN, CALIFORNIA
 SUITE 202
 92680
 714 / 838-2010

8/14/06

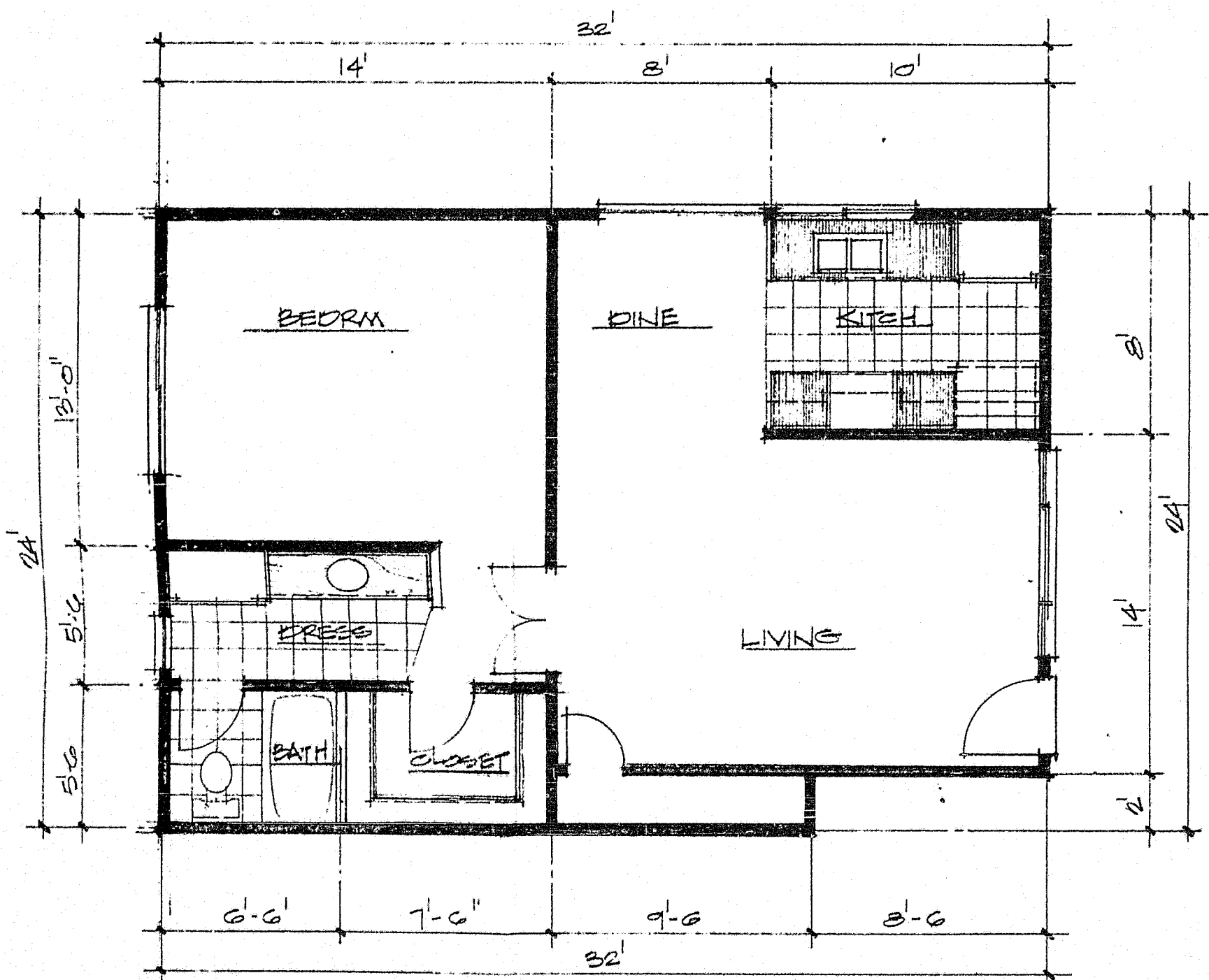


TYPICAL ELEVATION (REAR)
SCALE = 1/8" = 1'-0"

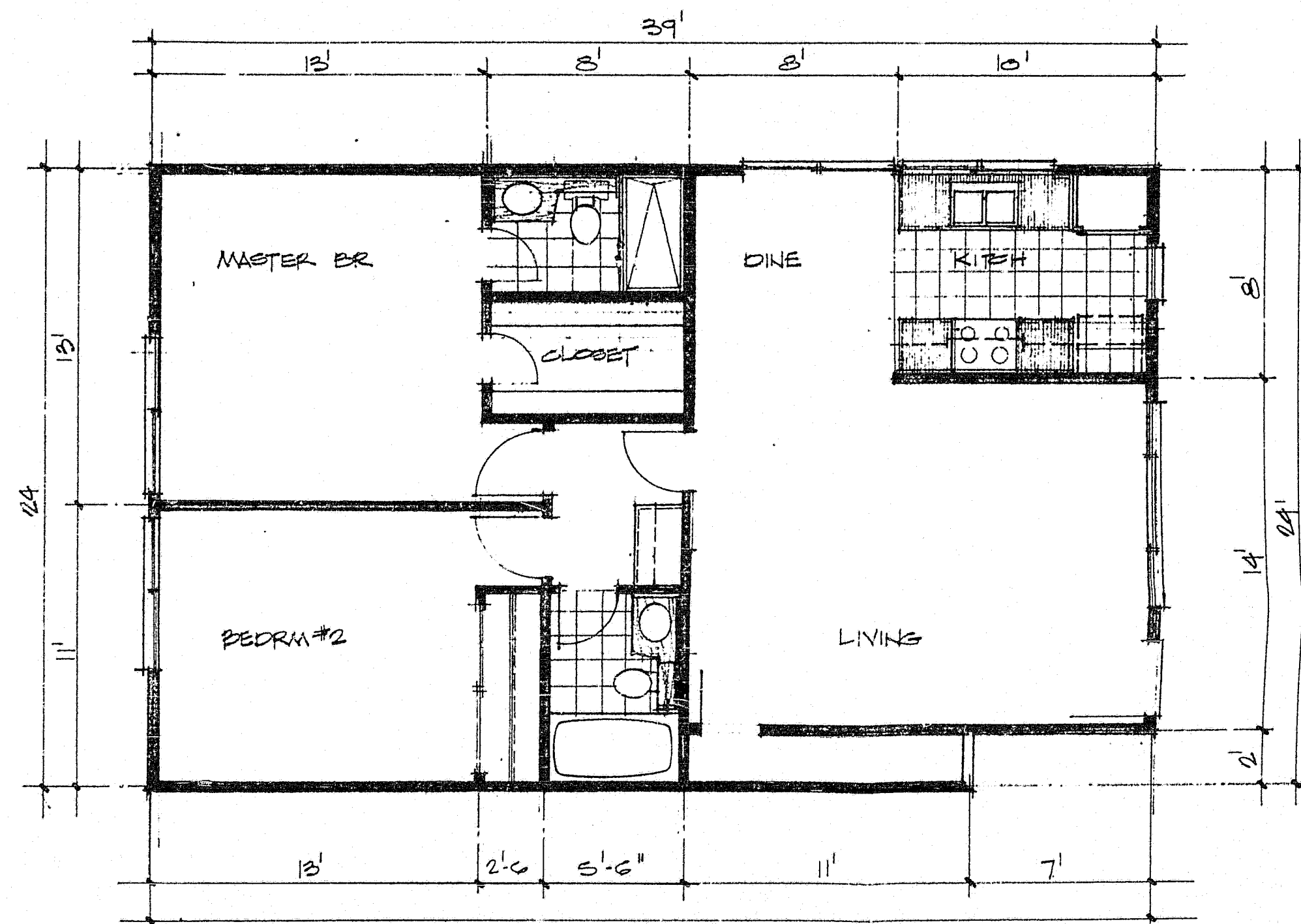
WILLIAM F. REED, AIA
ARCHITECT PLANNER
275 / 424 - 8030
888 FASHION LANE
TUSTIN, CALIFORNIA 92680



SECTION THRU COURT
SCALE = 1/8" = 1'-0"



UNIT "A" • ONE BEDROOM • 768 SF.
SCALE = 1/4" = 1'-0"



UNIT "B" • TWO BEDRM • 920 S.F.
SCALE

SP# 7.1076

2