

T A B U L A T I O N

| | |
|--------------|-------------------------|
| BUILDING #1 | - 10,517 SQ. FT. |
| BUILDING #2 | - 10,315 SQ. FT. |
| TOTAL | - 20,832 SQ. FT. |

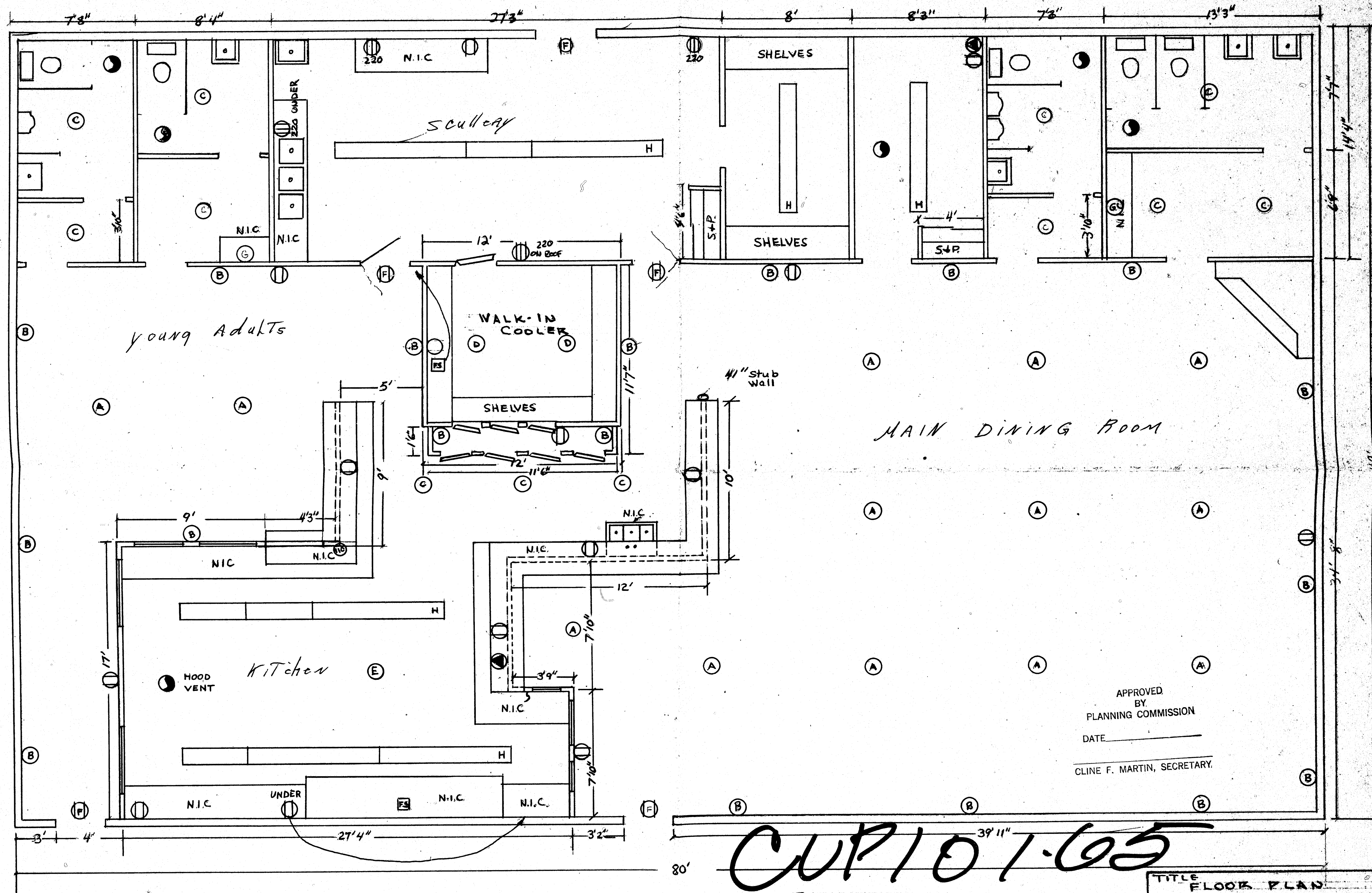
PARKING PROVIDED 113 SPACES

SUPERSEDED

CUP 101-65

P L O T P L A N
PROJECT LOCATION: GORDEN GROVE CALIF.

| | |
|---|----------------|
| TITLE: PLOT PLAN | |
| HASTER SHOPPING CENTER SOUTH EAST CORNER OF CHAPMAN AVE. & HASTER ST. | |
| OWNER: RICHARD C. BOUCHER | |
| PREPARED BY: JAMES SCHULER & ASSOC. 911 E. KATELLA AVE. ANAHEIM, CALIF. 92714 | |
| SCALE: 1" = 30'-0" | DATE: 11/24/64 |
| CASE NO.: | |



APPROVED
BY
PLANNING COMMISSION
DATE _____
CLINE F. MARTIN, SECRETARY.

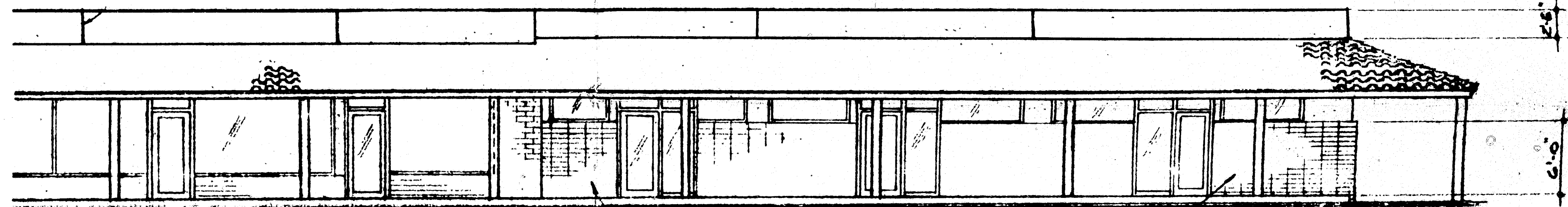
CUP 101-65

LA PIZZA GROTTO
HASTER SQUARE
GARDEN GROVE, CALIF.

CUP 101'65

1/4" = 1'-0"

TITLE
FLOOR PLAN
HASTER SHOPPING CENTER
SOUTHEAST CORNER OF
CHAPMAN AVE. & HASTER ST.



BLD'G. # 2

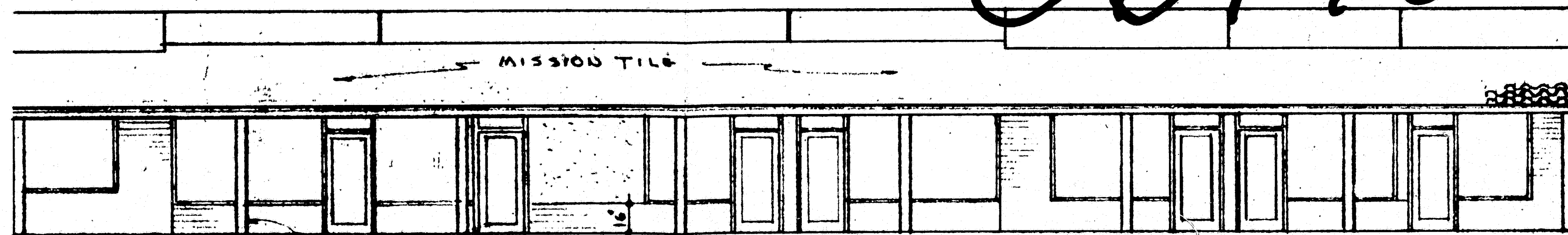
SLUMP STONE VENEER, STACKBOND

APPROVED
BY
PLANNING COMMISSION

DATE _____

CLINE F. MARTIN, SECRETARY

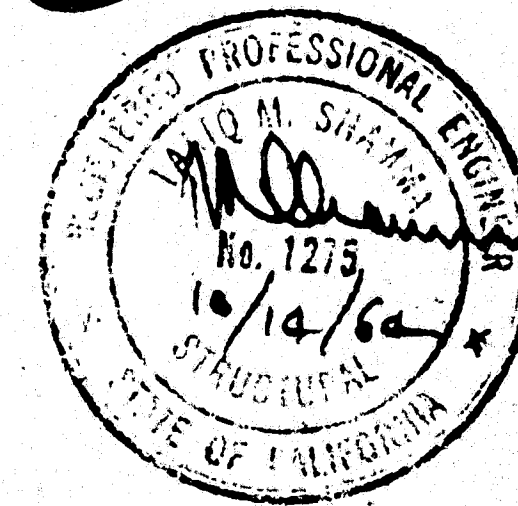
CUP 101-65



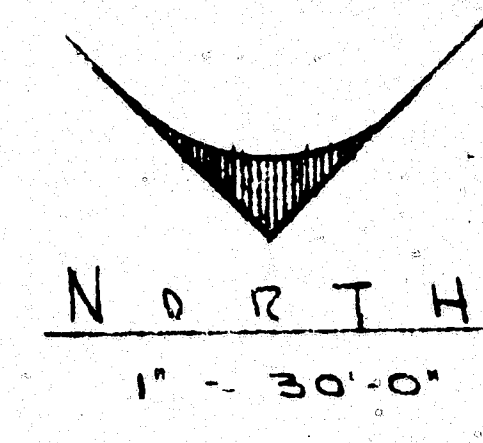
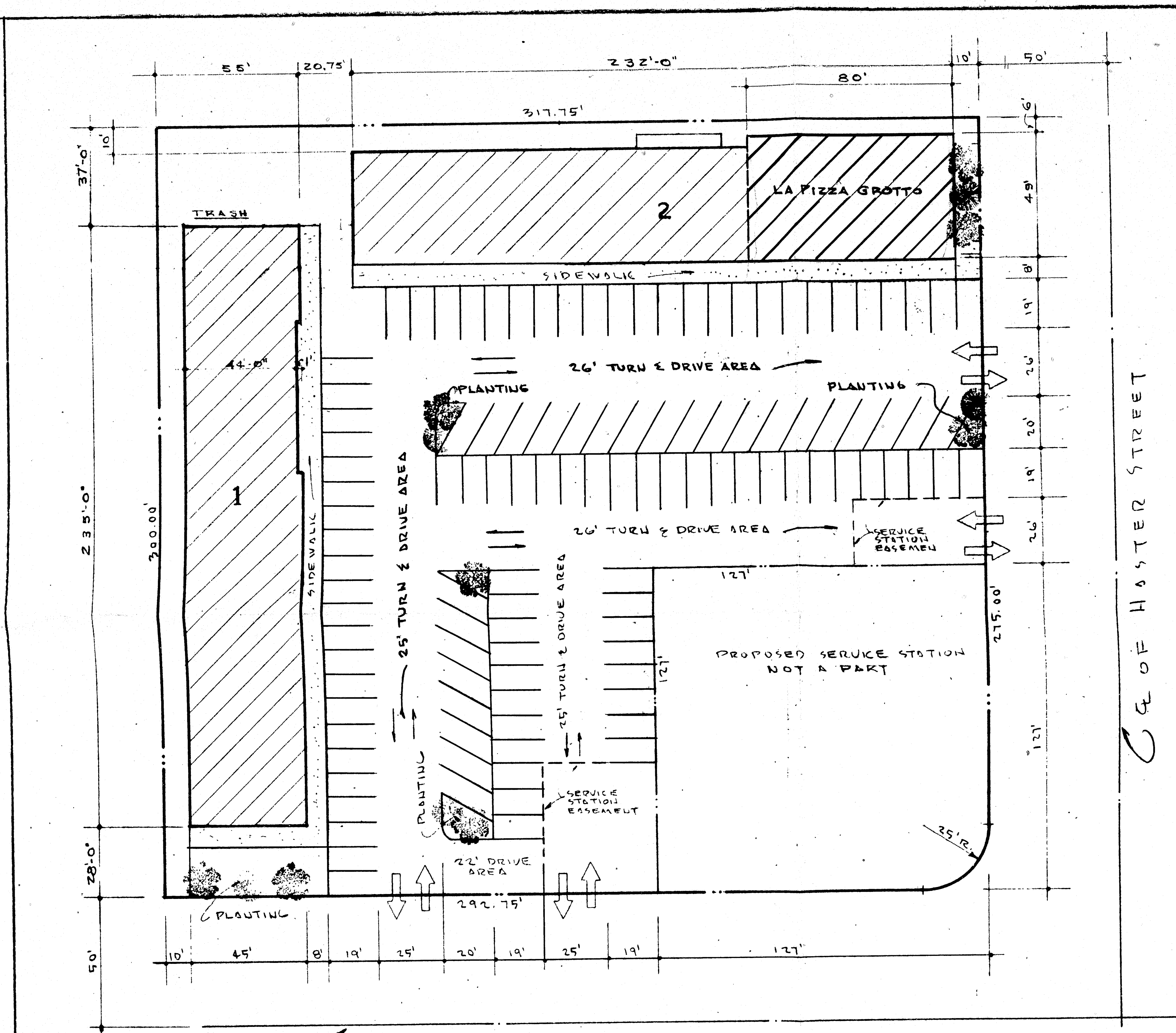
MISSION TILE

VENEER & COLS.

BLD'G. # 1



CUP 101'65



T A B U L A T I O N

| | |
|--------------|-------------------------|
| BUILDING #1 | - 10,517 SQ. FT. |
| BUILDING #2 | - 10,760 SQ. FT. |
| TOTAL | - 21,277 SQ. FT. |

PARKING PROVIDED 113 SPACES

CUP101.65

APPROVED
BY
PLANNING COMMISSION
DATE _____
CLINE F. MARTIN, SECRETARY

TITLE PLOT PLAN
HASTER SHOPPING CENTER
SOUTH EAST CORNER OF
CHAPMAN AVE. & HASTER ST.

CUP 101'65

P L O T P L A N
PROJECT LOCATION GARDEN GROVE CALIF