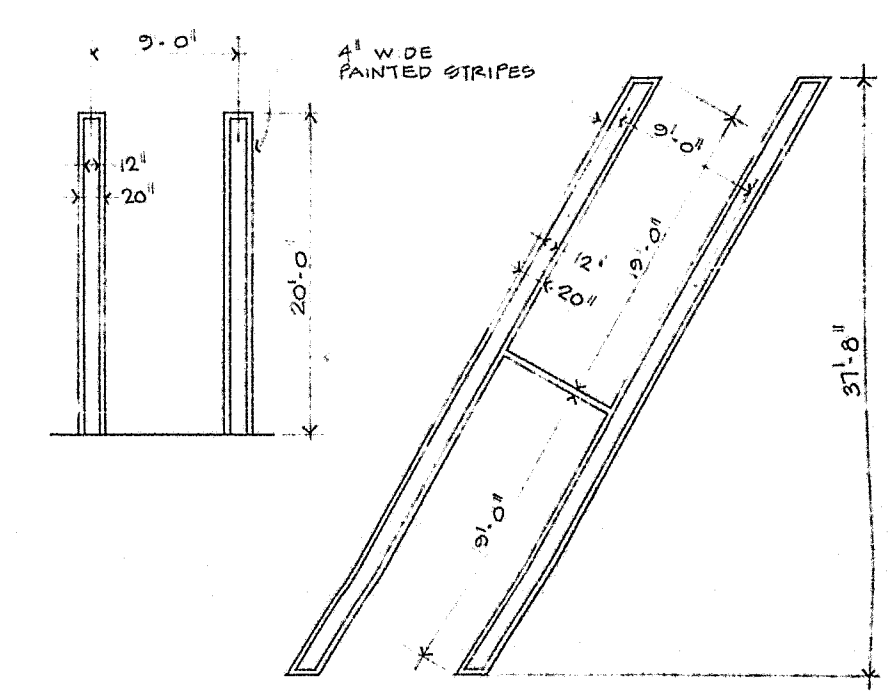
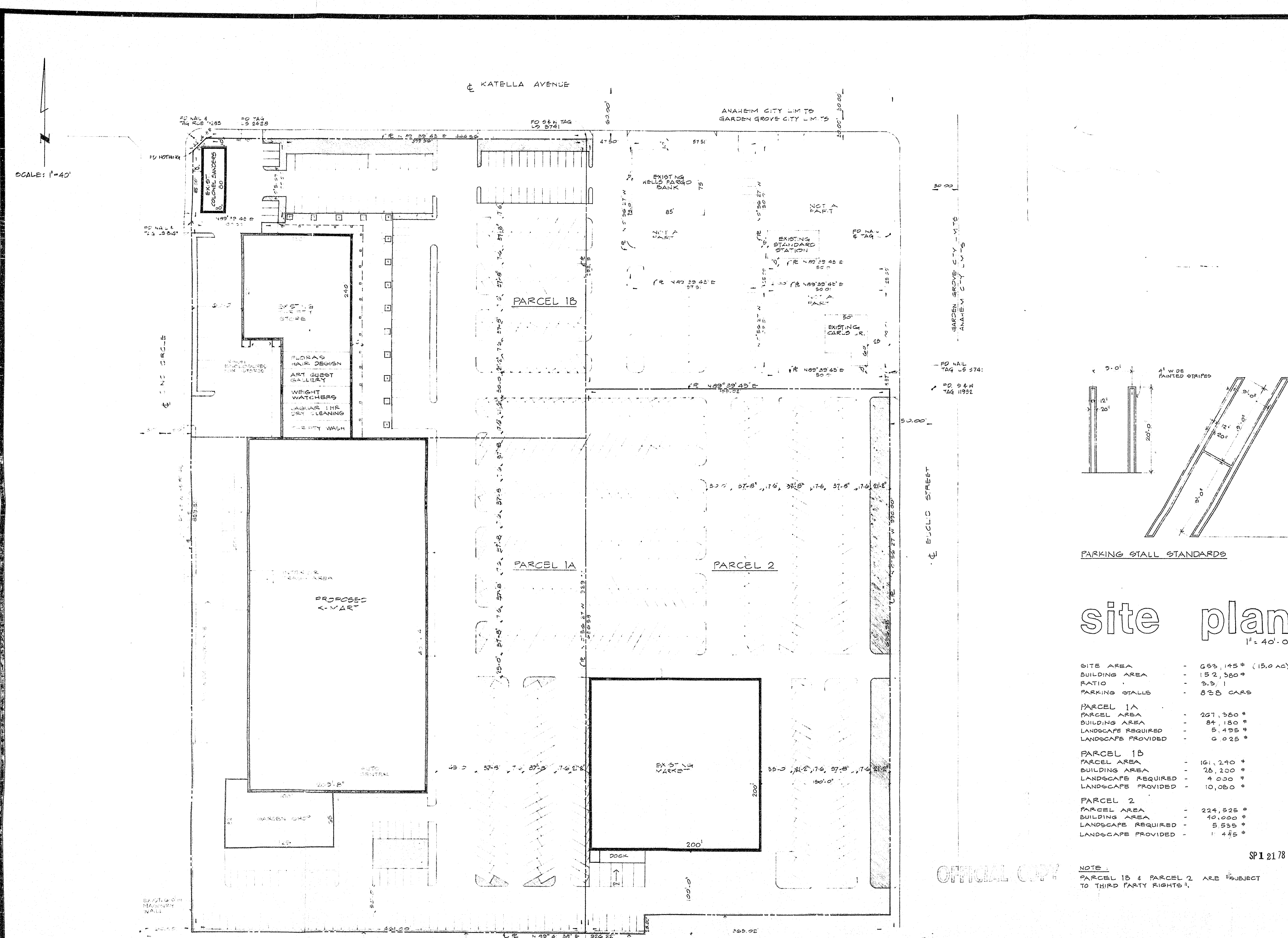


SP-121-78



SP-121-78

4/27/78
Proposed revised
elevation for K-Mart
SP-121-78



site plan
1" = 40' 0"

SITE AREA	-	653,145 * (15.0 AC)
BUILDING AREA	-	152,350 *
RATIO	-	3.3:1
PARKING STALLS	-	825 CARS
PARCEL 1A		
PARCEL AREA	-	227,350 *
BUILDING AREA	-	84,150 *
LANDSCAPE REQUIRED	-	5,435 *
LANDSCAPE PROVIDED	-	0 025 *
PARCEL 1B		
PARCEL AREA	-	161,210 *
BUILDING AREA	-	28,200 *
LANDSCAPE REQUIRED	-	4 000 *
LANDSCAPE PROVIDED	-	10,000 *
PARCEL 2		
PARCEL AREA	-	224,526 *
BUILDING AREA	-	40,000 *
LANDSCAPE REQUIRED	-	5 535 *
LANDSCAPE PROVIDED	-	1 425 *

NOTE:
PARCEL 1B & PARCEL 2 ARE SUBJECT
TO THIRD PARTY RIGHTS.

OFFICIAL COPY

REVISIONS

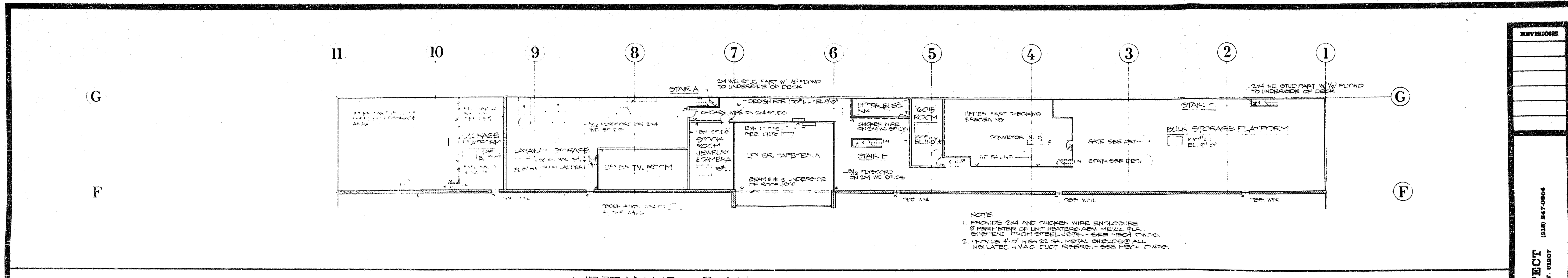
NO.	DATE	BY	REVISION

JOHN K. GRIST / ARCHITECT
2033 247 0844
507 EAST OLSON ROAD SUITE 100
GARDEN GROVE, CALIF. 92707

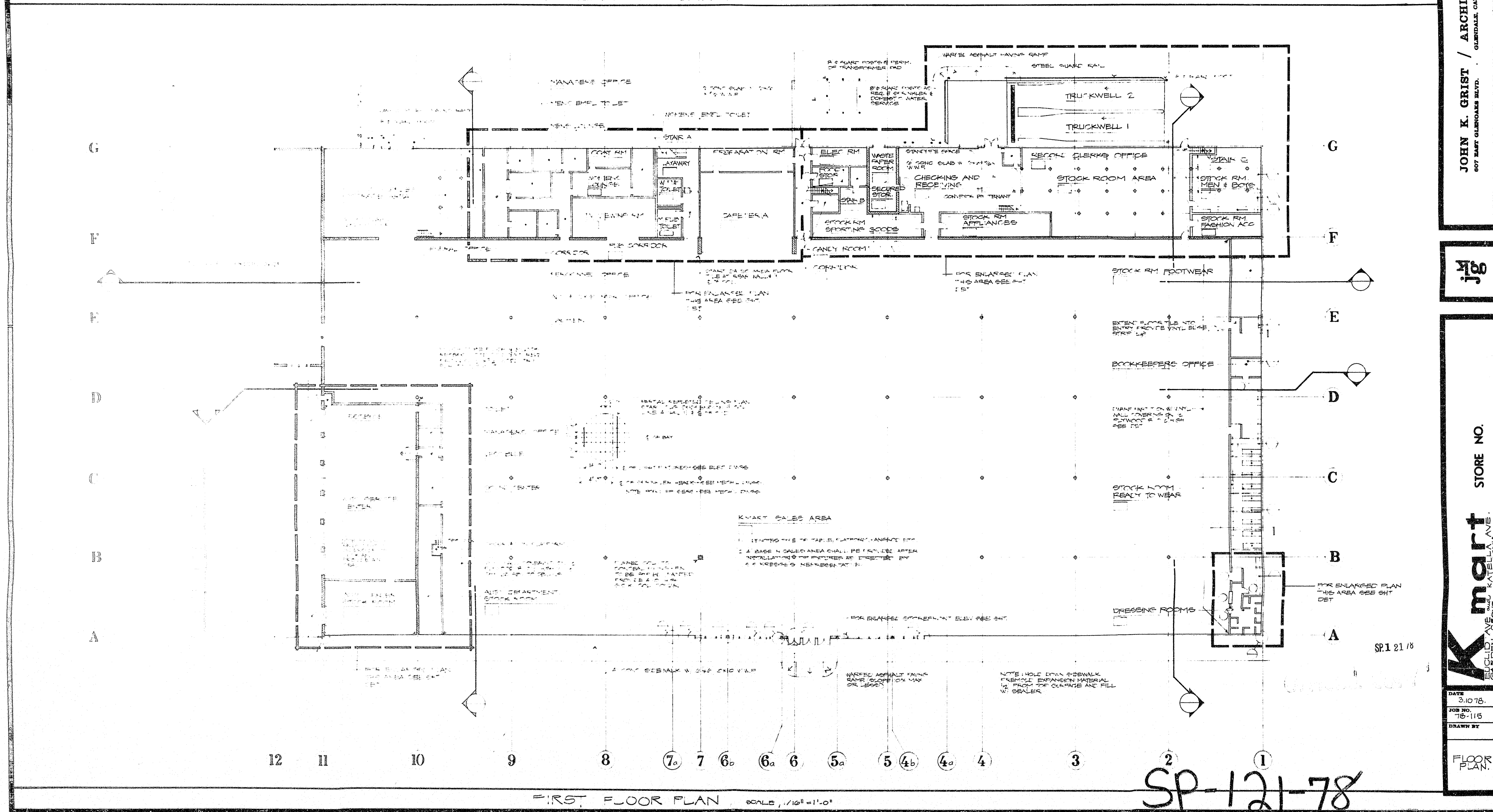
JG
JG
COMMERCIAL DEVELOPMENT FOR
THE STRAND COMPANIES
AT BUILDING AT KATELLA
GARDEN GROVE, CA. (9000)

DATE
JOB NO.
DRAWN BY

SP-121-78



MEZZANINE PLAN SCALE 1/16" = 1'-0"



FIRST FLOOR PLAN SCALE 1/16" = 1'-0"

SP-121-78

REVISIONS

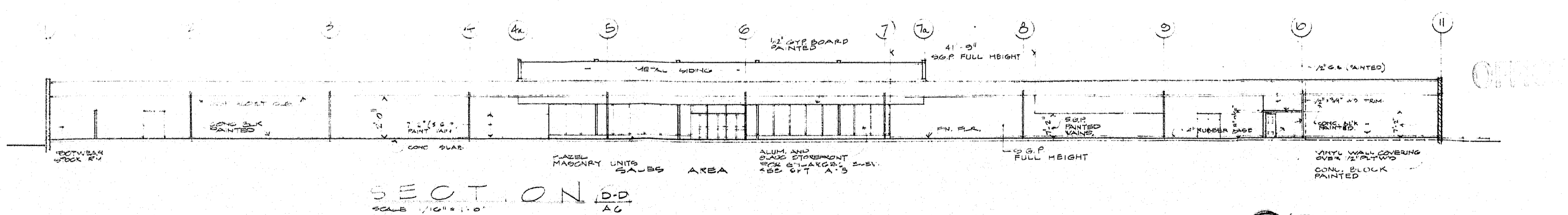
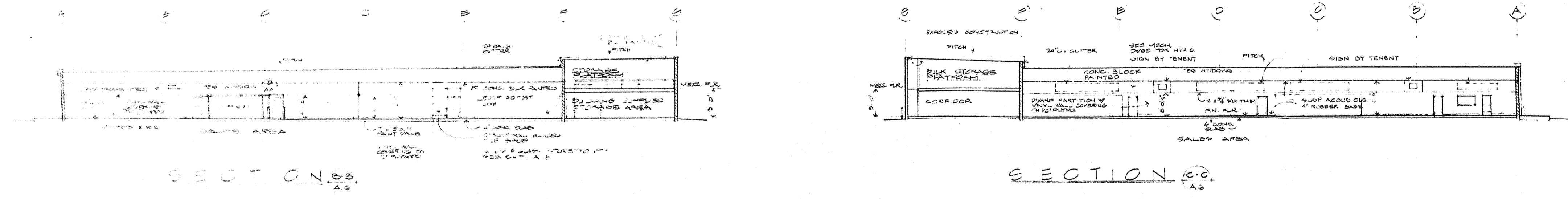
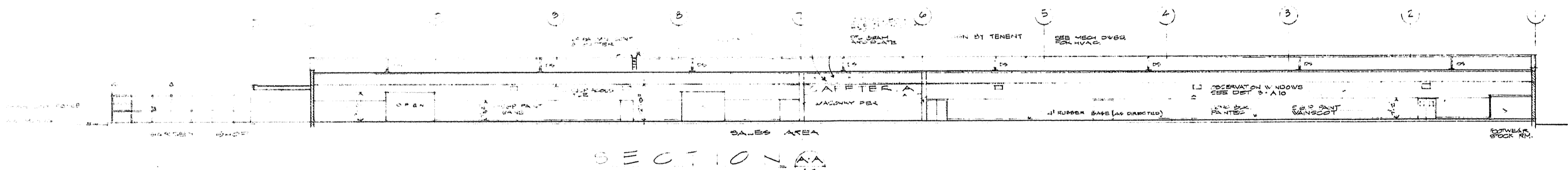
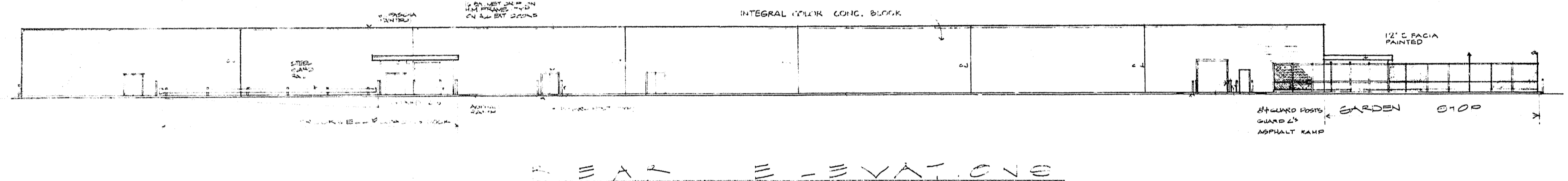
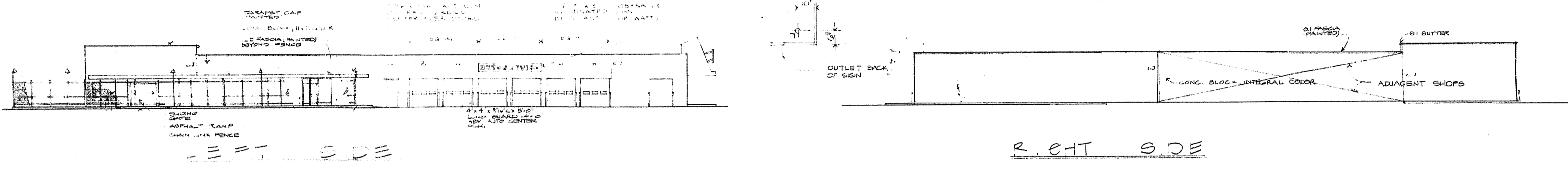
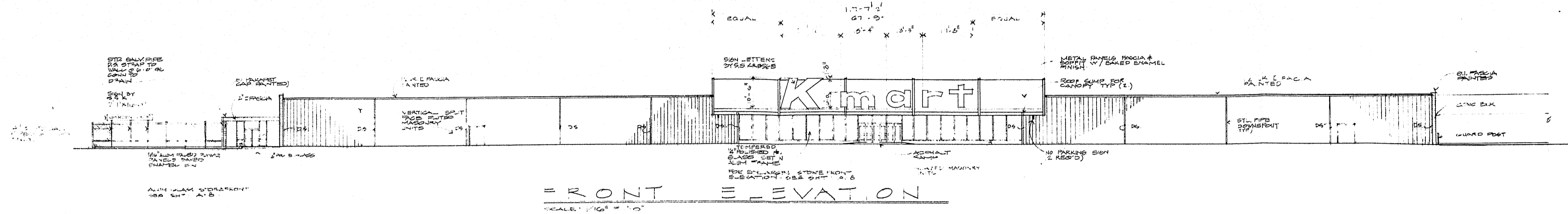
JOHN K. CRIST / ARCHITECT
 607 EAST OLNEY ROAD, SUITE 100
 OMAHA, NE 68104
 (402) 442-0884



Kmart STORE NO. _____
 3500 WEST CENTER AVENUE
 SUITE 100
 OMAHA, NE 68104

DATE: 2/10/78
 JOB NO.: 78-115
 DRAWN BY: _____

FLOOR PLAN



REVISIONS

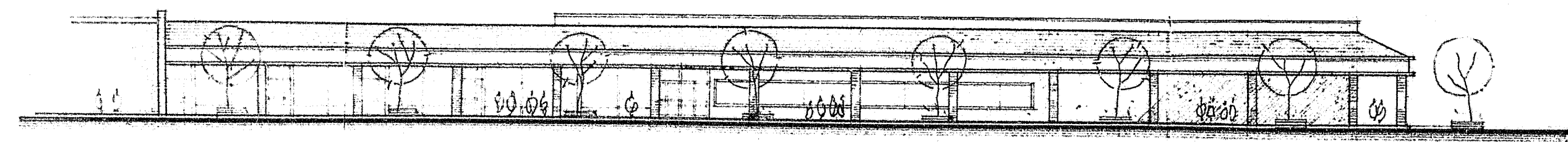
JOHN K. GRIST / ARCHITECT
 607 EAST GARDENS BLVD.
 GARDENA, CALIF. 90247
 (213) 847-0844

JK

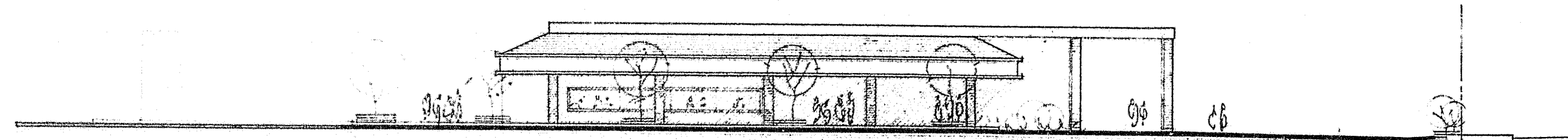
Kmart
 STORE NO. 121-78

DATE: 3/1/78
 JOB NO.: 78-115
 DRAWN BY:
 ELEV.

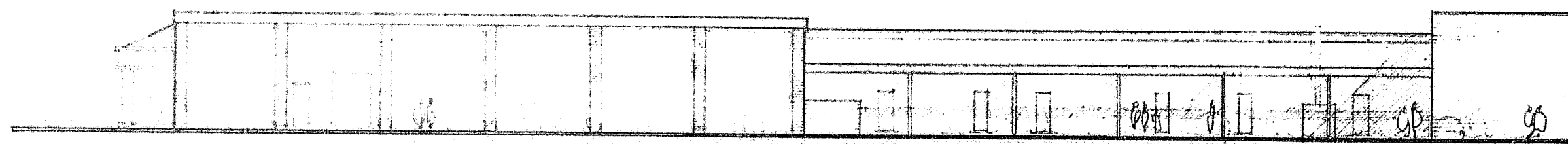
SP-121-78



FRONT ELEVATION (EAST) SCALE, 1/8" = 1'-0"

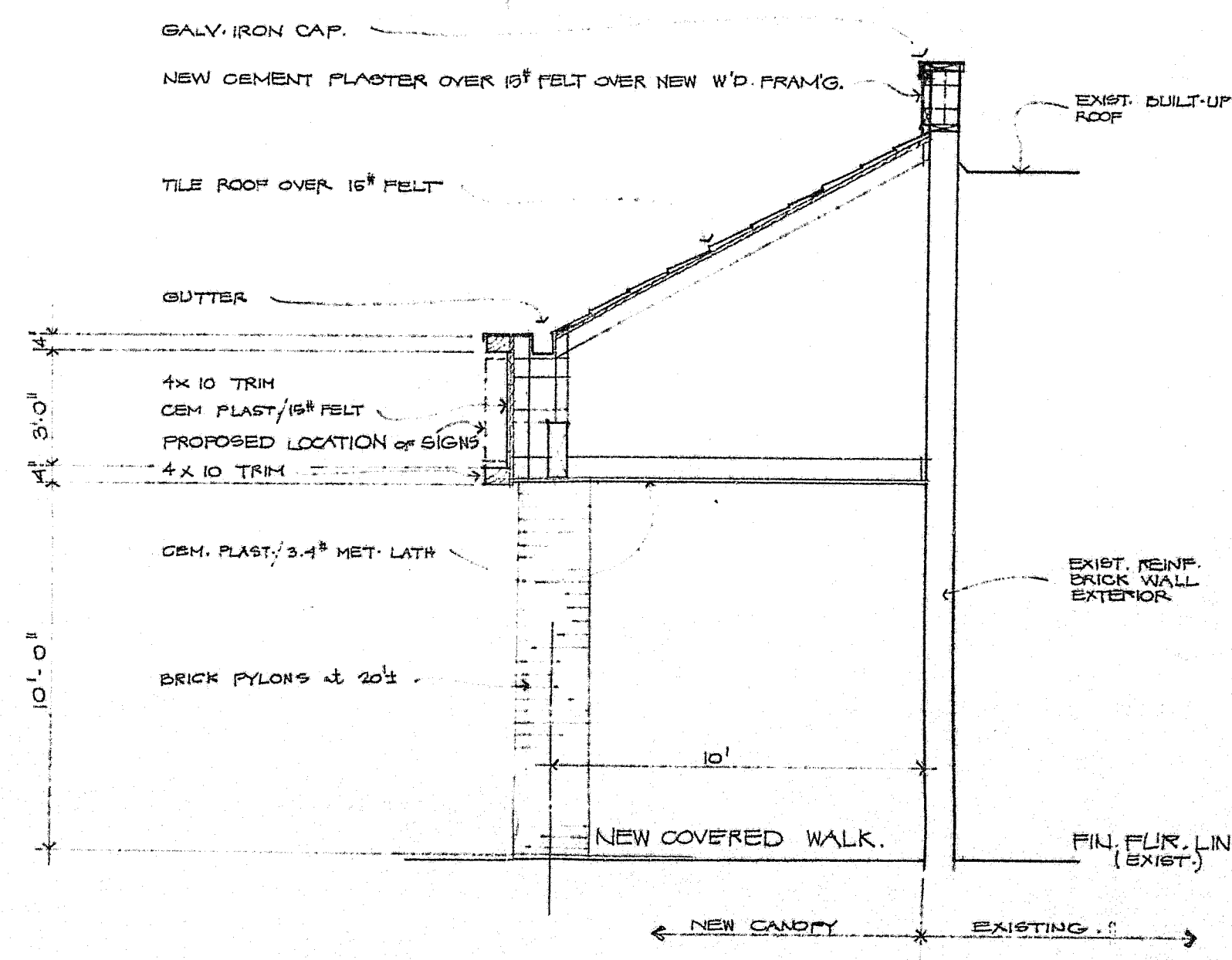


SIDE ELEVATION (SOUTH) SCALE, 1/8" = 1'-0"



REAR ELEVATION (WEST) SCALE, 1/8" = 1'-0"

elevations



section

OFFICIAL COPY

SCALE, 3/8" = 1'-0"

SP 12178

SP-121-78

REVISIONS

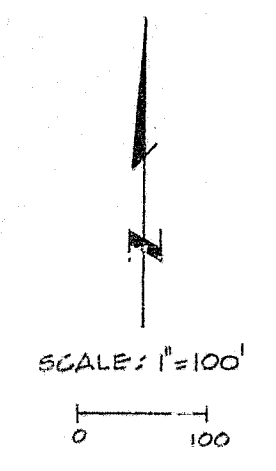
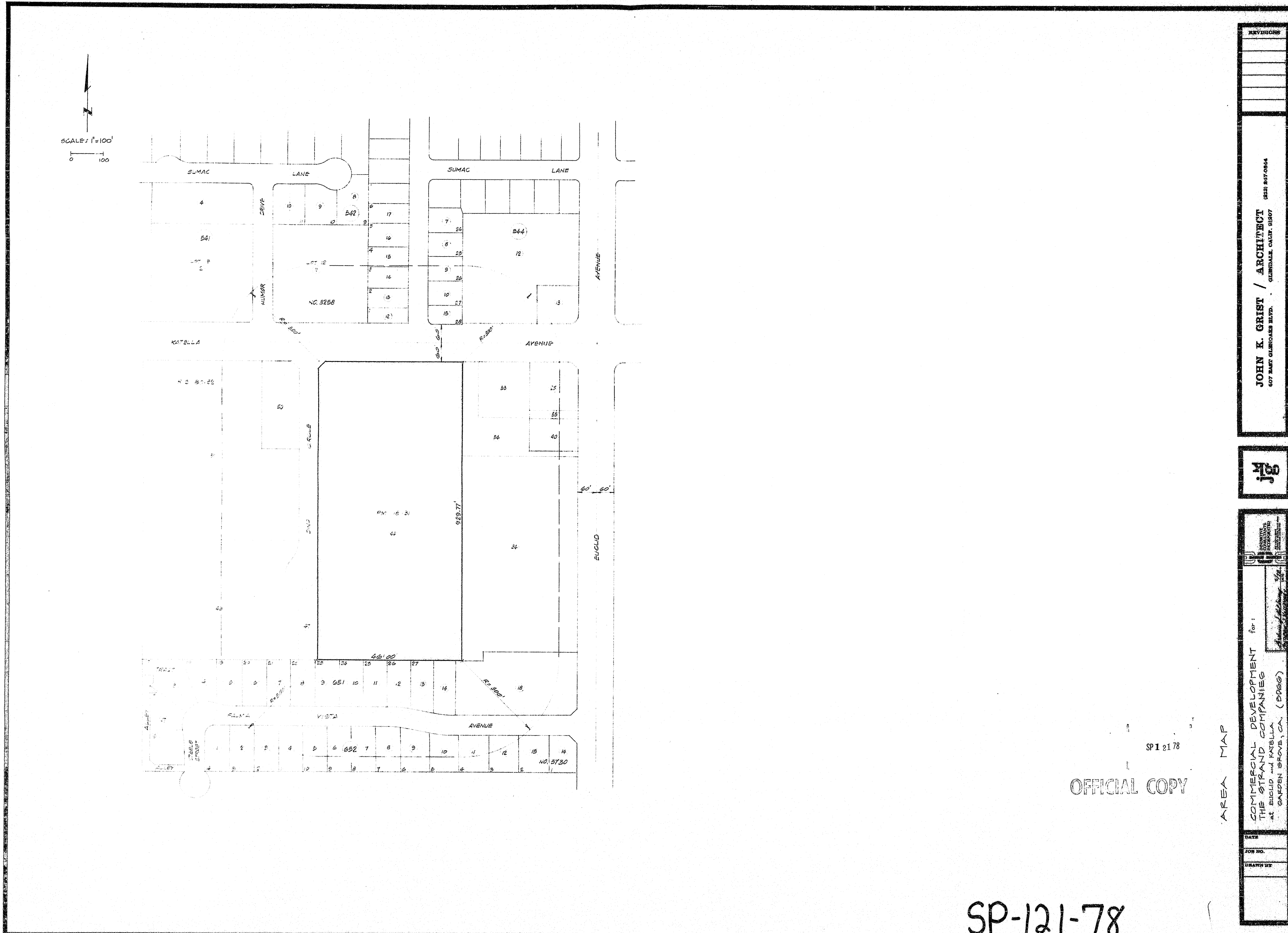
JOHN K. GRIST / ARCHITECT
 607 EAST OLIVEWOOD BLVD. GLENDALE, CALIF. 91204
 (818) 947-0844



COMMERCIAL DEVELOPMENT
 THE STRAND COMPANIES
 12 EUGENE AND KATELLA
 GARDEN GROVE, CALIF. (SP12178)

DATE	BY
7-15-78	JKB

REMOD
 SHOPS
 DRUGSTORE



SP 121 78
 OFFICIAL COPY

SP-121-78

AREA MAP

 JOHN K. CRIST / ARCHITECT <small>607 BAY GLENDALE BLVD. GLENDALE, CALIF. 91207</small>	 THE STRAND COMPANIES <small>42 EUCLID AVE. KATELLA GARDEN GROVE, CA. (92626)</small>
<small>REGISTERED ARCHITECT STATE OF CALIFORNIA No. 12345</small>	<small>REGISTERED ARCHITECT STATE OF CALIFORNIA No. 67890</small>
<small>DATE: _____</small>	<small>JOB NO.: _____</small>
<small>DRAWN BY: _____</small>	<small>FOR: _____</small>