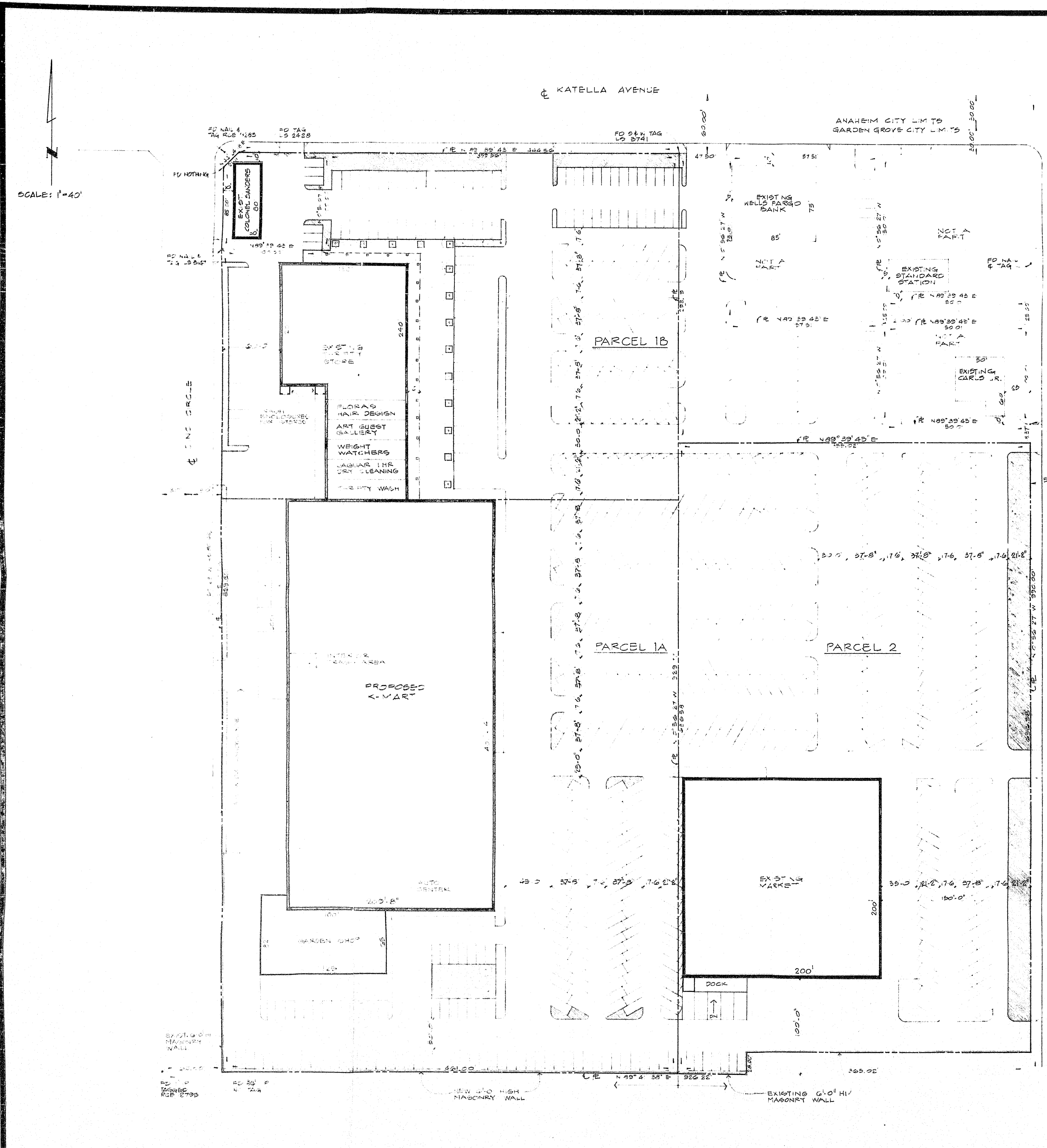


SP-121-78



SP-121-78

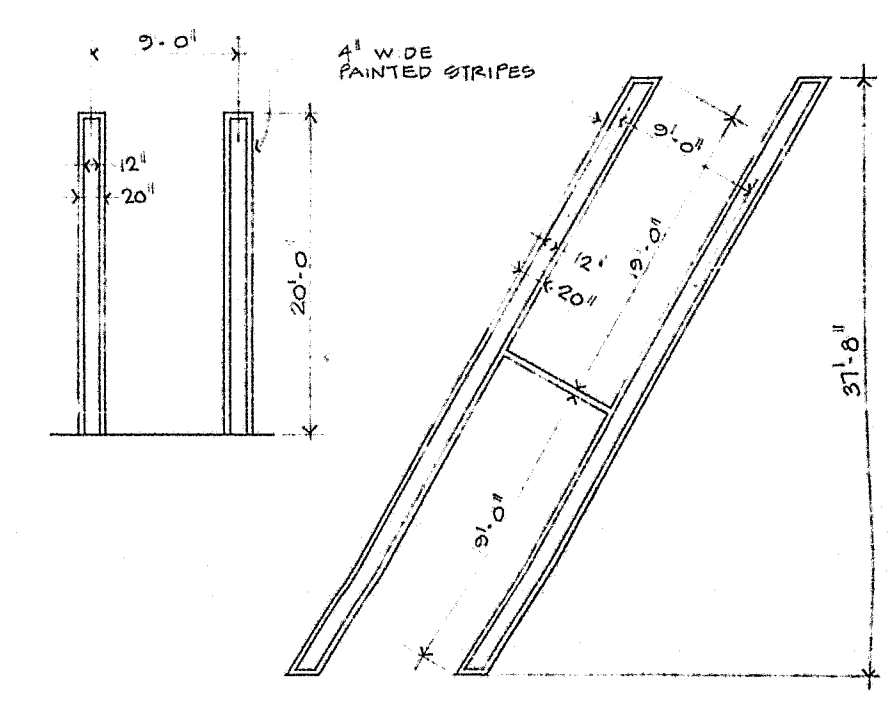
4/27/78
Proposed revised
elevation for K-Mart
SP-121-78



SCALE: 1"=40'

EULO STREET

KATELLA AVENUE



PARKING STALL STANDARDS

site plan

1" = 40.0'

SITE AREA	-	653,145 * (15.0 AC)
BUILDING AREA	-	152,360 *
RATIO	-	2.3:1
PARKING STALLS	-	828 CARS
PARCEL 1A		
PARCEL AREA	-	227,360 *
BUILDING AREA	-	84,150 *
LANDSCAPE REQUIRED	-	5,435 *
LANDSCAPE PROVIDED	-	0,025 *
PARCEL 1B		
PARCEL AREA	-	161,210 *
BUILDING AREA	-	76,200 *
LANDSCAPE REQUIRED	-	4,000 *
LANDSCAPE PROVIDED	-	10,050 *
PARCEL 2		
PARCEL AREA	-	224,526 *
BUILDING AREA	-	90,000 *
LANDSCAPE REQUIRED	-	5,535 *
LANDSCAPE PROVIDED	-	1,445 *

OFFICIAL COPY

NOTE: PARCEL 1B & PARCEL 2 ARE SUBJECT TO THIRD PARTY RIGHTS.

SP-121-78

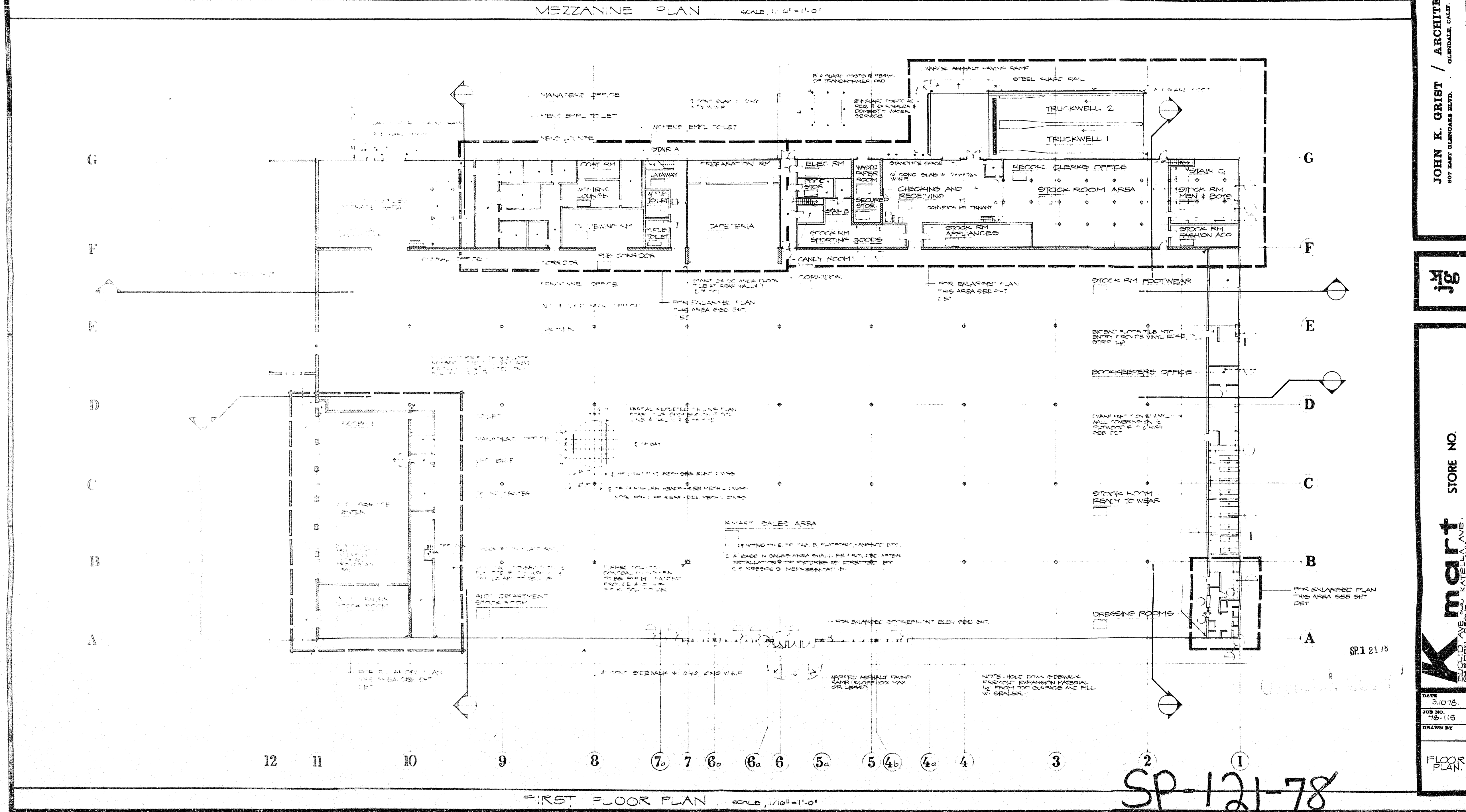
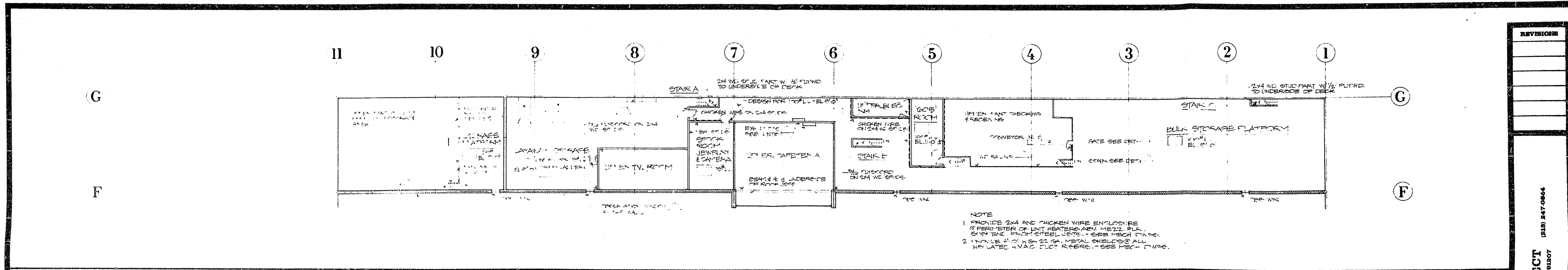
REVISIONS

JOHN K. GRIST / ARCHITECT
 507 EAST OLSON AVE. GARDEN GROVE, CALIF. 92647
 (949) 247-0864

JKG

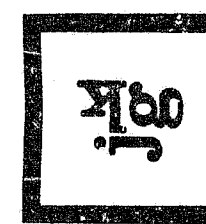
COMMERCIAL DEVELOPMENT
 FOR THE STRAND COMPANIES
 AT BUILDING AT KATELLA
 GARDEN GROVE, CA. (1986)

DATE: _____
 JOB NO.: _____
 DRAWN BY: _____



REVISIONS

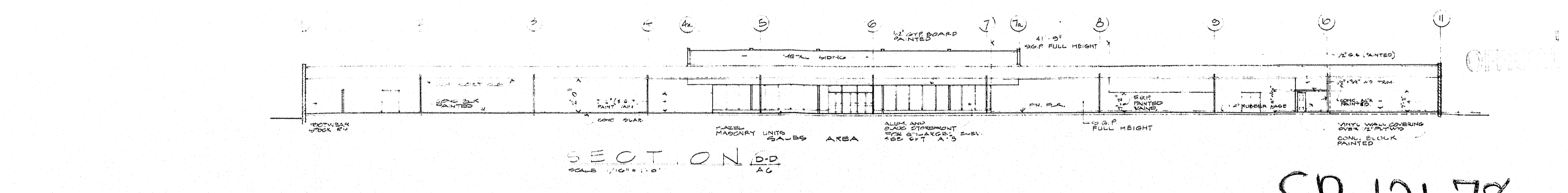
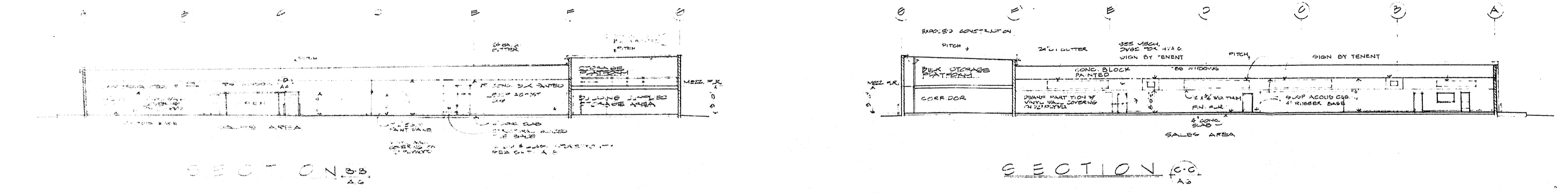
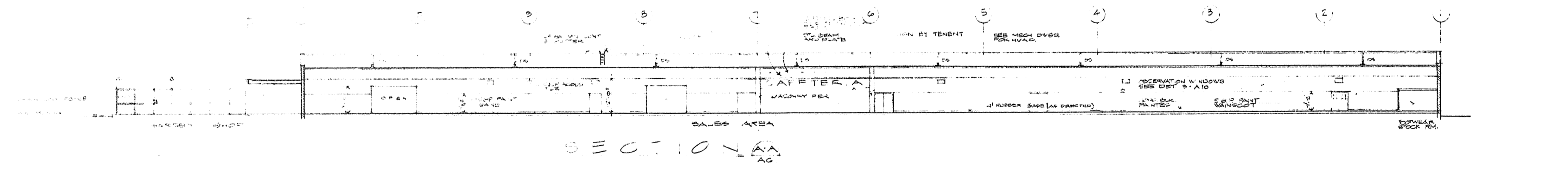
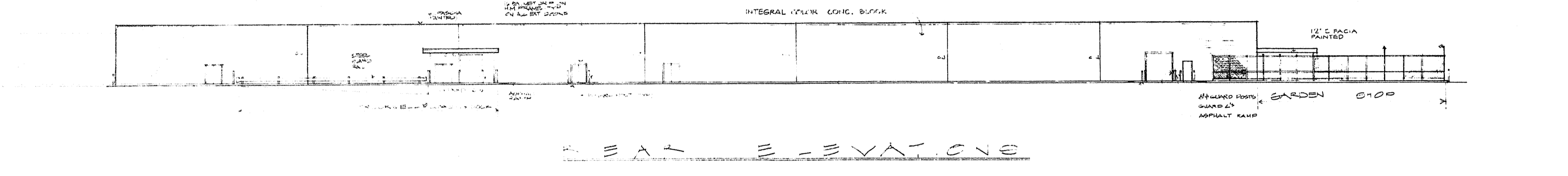
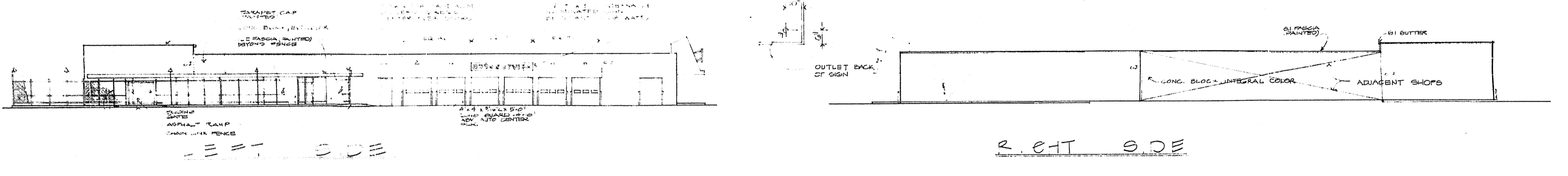
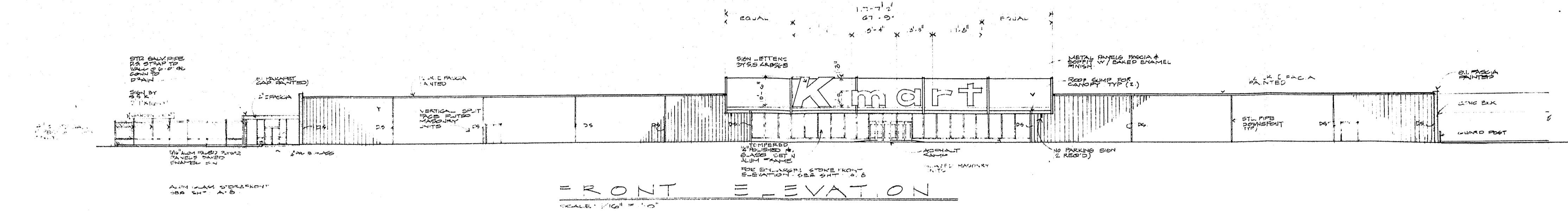
JOHN K. GRIST / ARCHITECT
 607 EAST OLMSTEAD BLVD. OLMSTEAD, CALIF. 94557
 (415) 847-0884



Kmart
 STORE NO. _____
 3000 S. SATTELKAMP AVENUE
 GARDEN GROVE, CALIF. 92643

DATE: 2/10/78
 JOB NO.: 78-115
 DRAWN BY: _____
FLOOR PLAN

SP-121-78



REVISIONS	

JOHN K. GRIST / ARCHITECT
 607 EAST GARDENS BLVD.
 GARDENS, CALIF. 95027
 (415) 847-0844

JK

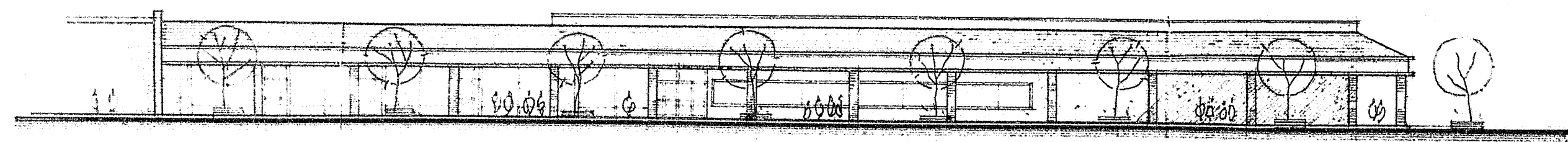
Kmart
 SALES AREA
 CORNER DOOR
 SIGN BY TENANT

STORE NO.

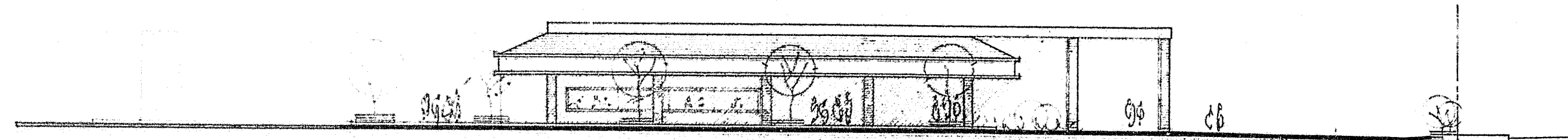
DATE: 5.13.78
 JOB NO.: 75-118
 DRAWN BY: [Signature]

ELEV.

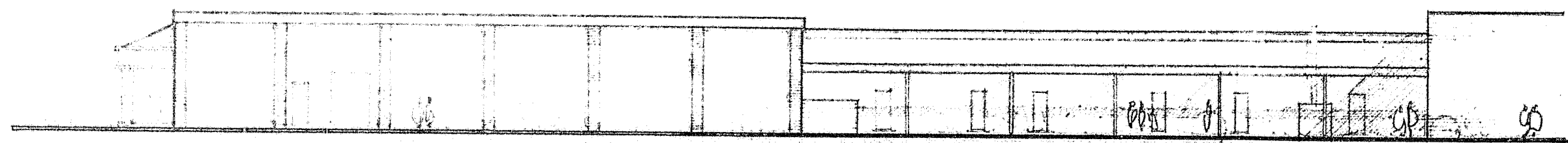
SP-121-78



FRONT ELEVATION (EAST) SCALE, 1/8" = 1'-0"

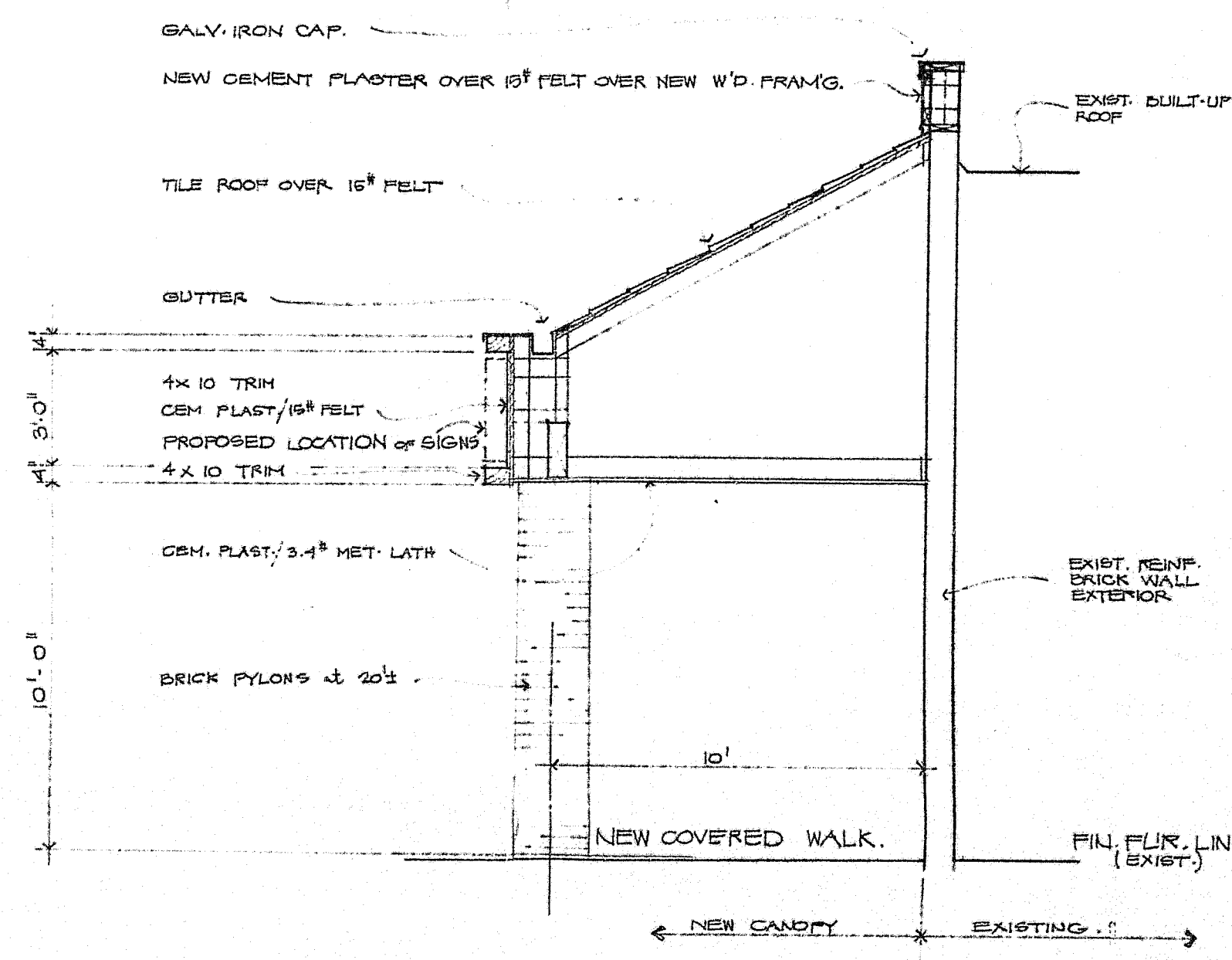


SIDE ELEVATION (SOUTH) SCALE, 1/8" = 1'-0"



REAR ELEVATION (WEST) SCALE, 1/8" = 1'-0"

elevations



section

OFFICIAL COPY

SCALE, 3/8" = 1'-0"

SP 121 78

SP-121-78

REVISIONS

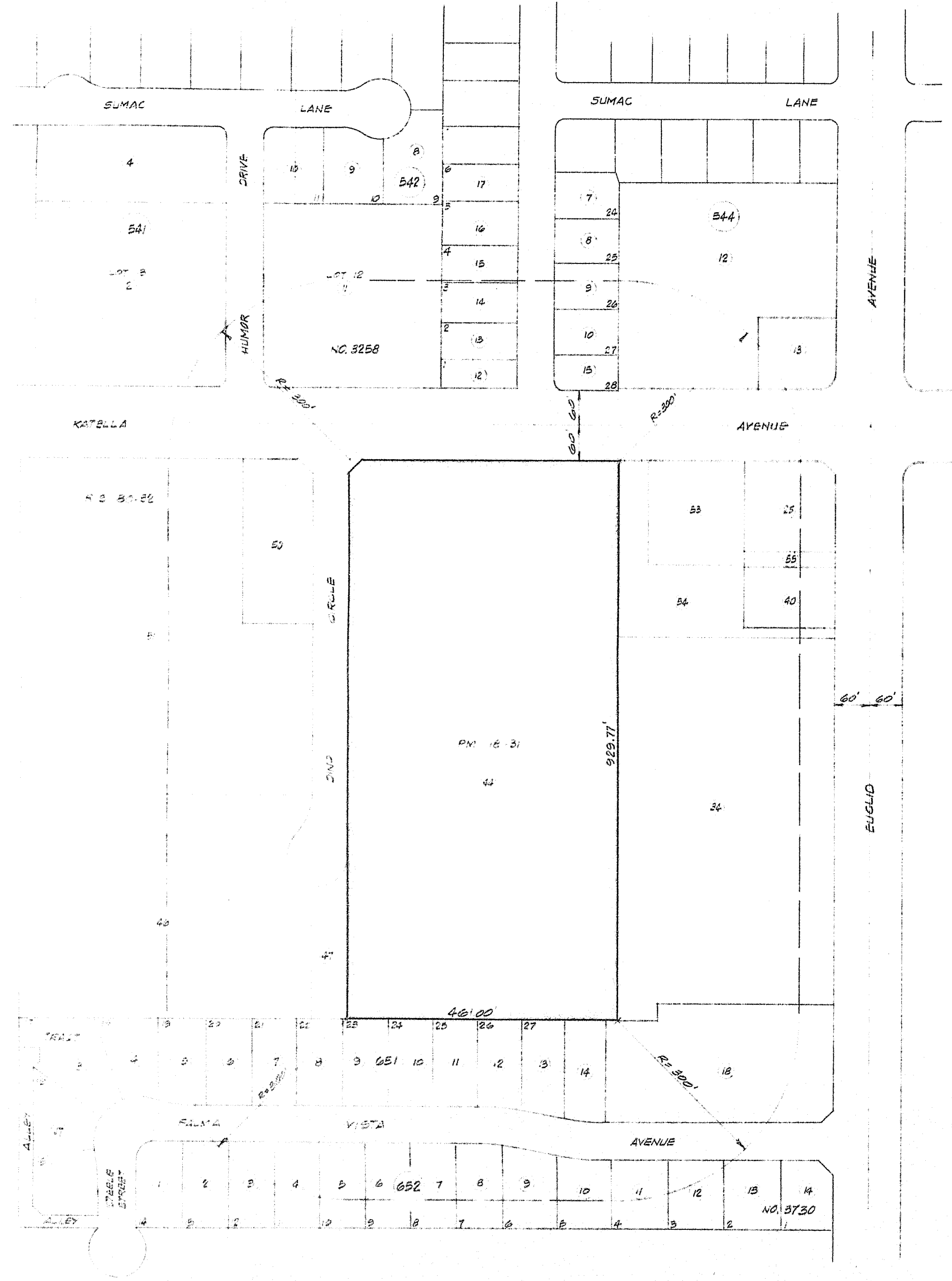
JOHN K. GRIST / ARCHITECT
 607 EAST OLIVEWOOD BLVD. GLENDALE, CALIF. 91204
 (818) 947-0844

JKG

COMMERCIAL DEVELOPMENT
 THE STRAND COMPANIES
 12 EUGENE AND KATELLA
 GARDEN GROVE, CALIF. (SP121)

DATE	7-15-78
PROJECT	78-115
DRAWN BY	
CHECKED BY	
REVISIONS	

SCALE: 1"=100'



SP 121 78

OFFICIAL COPY

AREA MAP

SP-121-78

REVISIONS	
JOHN K. GRIST / ARCHITECT 607 BAY GLENDALE BLVD. GLENDALE, CALIF. 91207 607 BAY GLENDALE BLVD. GLENDALE, CALIF. 91207	
COMMERCIAL DEVELOPMENT for: THE STRAND COMPANIES 44 EUCLID AND KATELLA GARDEN GROVE, CA. (SDG)	
DATE	
JOB NO.	
DRAWN BY	