

TRACT No. 16607

IN THE CITY OF GARDEN GROVE, COUNTY OF ORANGE
STATE OF CALIFORNIA

PIAI ENGINEERING INC., VICTOR PIAI R.C.E. 20327
OCTOBER, 2004

ALL OF TENTATIVE TRACT No. 16607
TOTAL LOTS: ONE (1)
TOTAL ACREAGE: 2.000 AC.
SCALE: 1"=50'
DATE OF SURVEY: OCTOBER, 2004

BASIS OF BEARINGS:

BEARINGS HEREON ARE BASED ON THE BEARING BETWEEN
O.C.S. HORIZONTAL CONTROL STATION C.P.S. No. 3500 AND
STATION G.P.S. No. 4221R1 BEING N34°58'18"E PER RECORDS
ON FILE IN THE OFFICE OF THE ORANGE COUNTY SURVEYOR.

EASEMENT NOTE:

- ① AN EASEMENT FOR PUBLIC UTILITIES & INCIDENTAL PURPOSES IN FAVOR OF PACIFIC BELL A CORPORATION, RECORDED 9-4-86 AS INSTR. No. 86-403712, OFFICIAL RECORDS.
- ② AN EASEMENT FOR PUBLIC UTILITIES & INCIDENTAL PURPOSES IN FAVOR OF SOUTHERN CALIFORNIA EDISON COMPANY, A CORPORATION, RECORDED 5-30-86 AS INSTR. No. 86-224653, OFFICIAL RECORDS.
- ③ AN EASEMENT AFFECTS 2 STRIPS OF LAND, EACH 6 FEET WIDE.
- ④ AN EASEMENT FOR PIPELINE AND INCIDENTAL PURPOSES IN FAVOR OF H.E. YOCKEY AND LILLEY B. YOCKEY; SUCCESSORS AND ASSIGNS, RECORDED 8-15-86 IN BOOK 841 PAGE 157 OFFICIAL RECORDS.
- ⑤ AN EASEMENT FOR STREET AND HIGHWAY AND INCIDENTAL PURPOSES IN FAVOR OF THE CITY OF GARDEN GROVE, A MUNICIPAL CORPORATION, PER DEED RECORDED 12-9-88 AS INSTR. No. 154363 IN BOOK 4509 PAGE 487, OFFICIAL RECORDS.

FD. BRASS CAP MON. IN CONC. WELL
PER TRACT No. 11134, M.M. 490-1-7,
ACCEPTED AS NW COR. W 1/2, NE 1/4,
SECTION 1, T5S, R11W.

DATUM STATEMENT:
COORDINATES SHOWN ARE BASED ON THE CALIFORNIA
COORDINATE SYSTEM (CCS83) ZONE VI, 1983 NAD
(1981.35 EPOCH OCS GPS ADJUSTMENT)

MONUMENT NOTES:
● INDICATES FOUND MONUMENT AS NOTED.
○ INDICATES SET 2" I.P. TAGGED R.C.E. 20327 (FLUSH)
○ INDICATES SET SPIKE & WASHER, R.C.E. 20327.
○ INDICATES SET LEAD & TAG, R.C.E. 20327, SOUTH
FACE OF WALL, 0.2' BELOW TOP OF WALL.

TABLE OF RECORDS

R₁ INDICATES TRACT No. 11134, M.M. 490-1-7

GPS PT. No. 3500
N 2229565.876
E 6037403.473
FD. 2" BRASS CAP STAMPED CALIFORNIA
DIVISION OF HWY.S CAP DOWN 0.7' IN
WELL MONUMENT PER RECORDS ON FILE
IN THE OFFICE OF THE ORANGE COUNTY
SURVEYOR.

GARDEN GROVE BOULEVARD

LOT 1

YOCKEY STREET

NEWLAND STREET

TRASK AVENUE

TRACT No. 11134

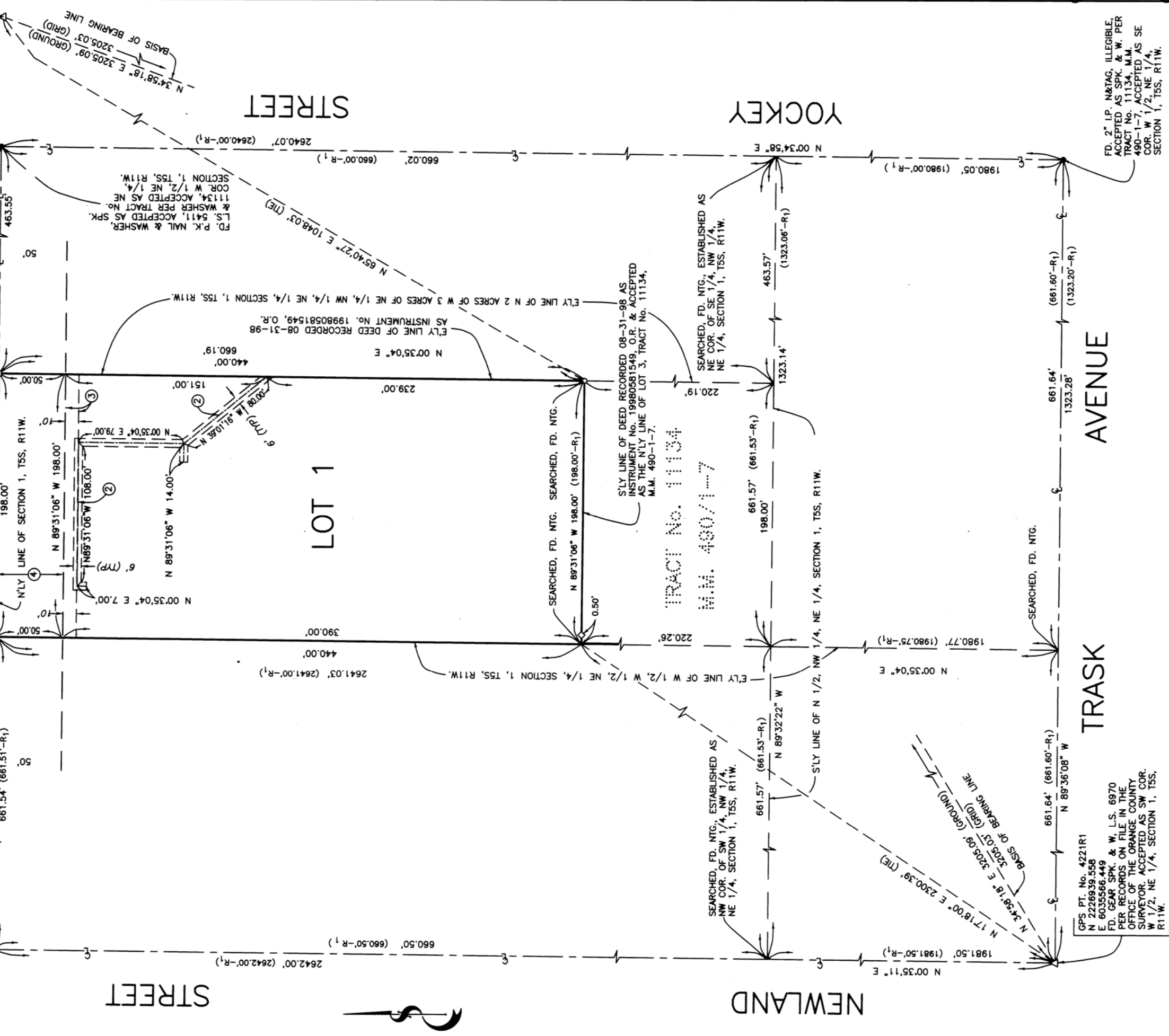
M.M. 490-1-7

SEARCHED, FD. NTG.

SEARCHED, FD. NTG.

SEARCHED, FD. NTG.

SEARCHED, FD. NTG.



GPS PT. No. 4221R1
N 2226939.558
E 6035566.449
FD. GEAR SPK. & W.L.S. 6970
PER RECORDS ON FILE IN THE
OFFICE OF THE ORANGE COUNTY
SURVEYOR. ACCEPTED AS SW COR.
W 1/2, NE 1/4, SECTION 1, T5S,
R11W.

FD. 2" I.P. N&TAG, ILLEGIBLE,
ACCEPTED AS SPK. & W. PER
TRACT No. 11134, M.M.
490-1-7, ACCEPTED AS SE
COR. W 1/2, NE 1/4,
SECTION 1, T5S, R11W.