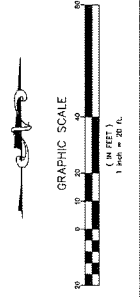


BASIS OF BEARINGS.
 THE COORDINATES ARE BASED ON THE CALIFORNIA COORDINATE SYSTEM
 (CALTRANS) DATA 6 (FOOT FROM HARBOR).

BENCHMARK:
 COUNTY OF CHANCE B.M. #1-88-C4
 REVISION BY CITY OF GARDEN GROVE 11-11-03. EXISTING BENCHMARK LINE
 BEARING IS 111.1000°. THE BENCHMARK IS LOCATED IN THE
 EXISTING CHANCE B.M. #1-88-C4. THE BENCHMARK IS LOCATED
 AT THE INTERSECTION OF HARBOR AND 11TH EASTERN OF THE COURSE
 ELEVATION = 120.032' (NAVD '89 / 2010 AD.)

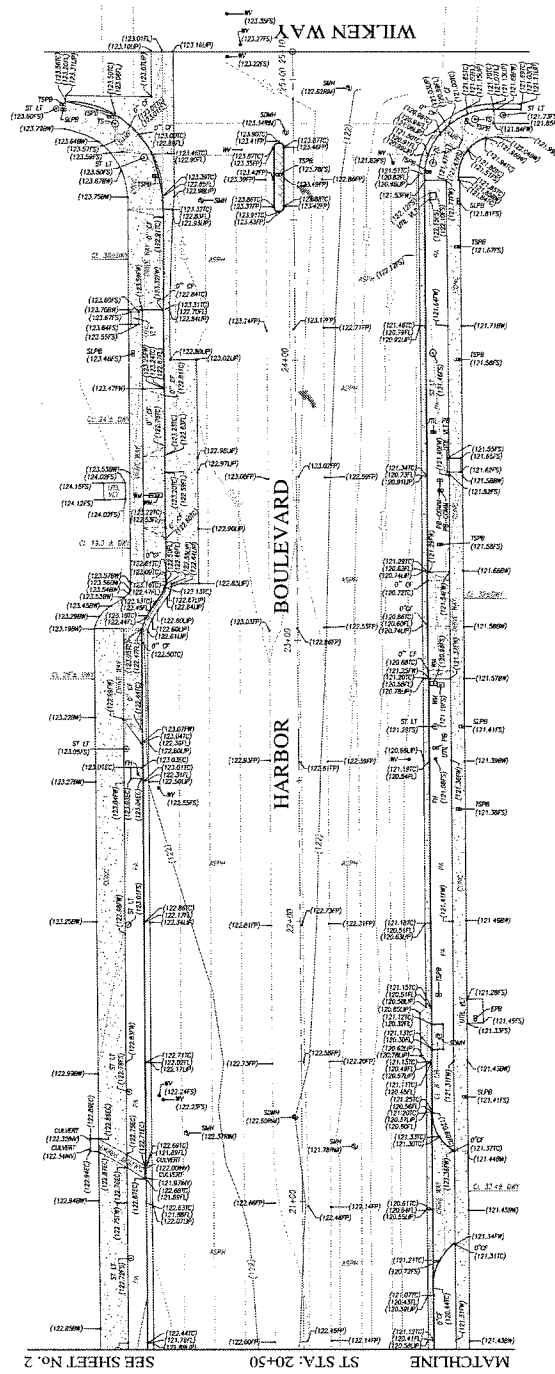
DO NOT SCALE THE DRAWING. USE THE
 SITE DIMENSIONS TO DETERMINE THE
 INTENTION TO GRADE OR EXCAVATE.
 Underground Service Alert
811
 CALL-TOLL-FREE
 THE REPORT DATE BEFORE YOU DIG



City of Garden Grove
 Department of Public Works
G
 MEDIAN INSTALLATION PLANS FOR
HARBOR BOULEVARD
 FROM CHAPMAN AVENUE TO WILKEN WAY

DATE: 01/26/06
 DRAWING NUMBER
A-1813
 SHEET 2 OF 3

DATE: 01/26/06
 DRAWING NUMBER
A-1813
 SHEET 2 OF 3





 811 CALL TOLL FREE

 UNDERGROUND SERVICE ALERT

 THE HOURS ARE BEFORE YOU GO

BASIS OF BEARINGS:

 BEARINGS ARE BASED ON THE NAD 83 GEODETIC COORDINATE SYSTEM

 (NAD 83) STATE PLANE (NAD 83) SYSTEM.

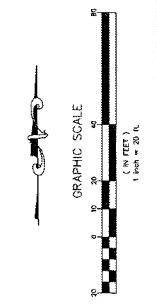
BENCHMARK:


 COUNTY OF ORANGE B.M. # 188-04.

 ESTABLISHED BY THE U.S. GEOLOGICAL SURVEY IN 1918.

 CONSISTENT WITH THE STATE PLANE COORDINATE SYSTEM.

 ELEVATION = 120.032' (NAD 83) (2011 ADJ.)





 City of Garden Grove

 Department of Public Works

MEDIAN INSTALLATION PLANS FOR

HARBOR BOULEVARD

FROM CHAPMAN AVENUE TO WILKEN WAY

DRAWING NUMBER

A-1813

 SHEET 3 OF 3

DATE: 07/17/12