

# WLC

Preliminary Planning and Environmental  
City of Garden Grove  
PROPOSAL FOR ARCHITECTURAL DESIGN SERVICES





DO NOT  
TOW UNDER  
AIRCRAFT

PST-6  
MENZIES

STAIR  
80

# TABLE OF CONTENTS

---

<b>PROPOSAL LETTER</b>	<b>1</b>
<b>BIDDER/CONTRACTOR STATEMENT</b>	<b>3</b>
<b>ORGANIZATION</b>	<b>5</b>
Introduction to WLC	
Firm Profile	
<b>EXPERIENCE</b>	<b>9</b>
Public Safety Experience	
Sustainable Design	
Recently Completed Projects	
Preliminary Layout - Site 2	
<b>KEY PERSONNEL</b>	<b>19</b>
WLC Resumes	
<b>CONSULTANT TEAM</b>	<b>23</b>
Consulting Team	
Consulting Team Resumes	
Organizational Chart	
<b>PROJECT APPROACH</b>	<b>29</b>
Design Team Methodology	
Project Committee	
Key Objectives	
<b>SCOPE OF WORK/FEE</b>	<b>31</b>
Scope of Work	
Fee	
Schedule	
Hourly Rates	
<b>REFERENCES/LETTERS</b>	<b>33</b>

# Proposal Letter

---

**RFP No. S-1177**

**CITY OF GARDEN GROVE**

**PROPOSAL REQUIREMENTS**

**PROPOSAL LETTER/CERTIFICATE OF ACCEPTANCE**

PROPOSER NAME: **WLC Architects, Inc.**

---

SANDRA SEGAWA, PURCHASING AGENT  
CITY OF GARDEN GROVE  
11222 ACACIA PARKWAY  
GARDEN GROVE, CALIFORNIA 92840

In response to the request the City is seeking proposals that include the following for a Replacement Fire Station in Garden Grove.

- 1) Creation of a conceptual site plan with general building footprint, appropriate to each site.
- 2) A planning level analysis of the costs of construction appropriate to each site.
- 3) Recommendations on the environmental (CEQA) review process for the project, including cost estimates for the environmental review analysis appropriate to each site.

We the undersigned hereby declare that we have carefully read and examined the Request for Proposal documents including any plans and specifications, and hereby propose to perform and complete the Work as required in the Contract.

This Contract is not exclusive. The CITY expressly reserves the right to contract for performance of services such as those described herein through other Contractors.

The undersigned agrees to supply the Scope of Work at the costs indicated in its cost proposal if its Proposal is accepted within 120 days from the date specified in the RFP for receipt of proposals.

The undersigned has reviewed the enclosed contract terms and conditions and agrees to accept all terms and conditions of the CITY's contract unless otherwise noted in the proposal response.

If recommended for Contract award, the undersigned agrees to execute a contract which will be prepared by the CITY for execution, within 10 calendar days following Notification of Award. It is understood that the recommendation for contract award will not be placed on the agenda for consideration by the City Council until the CITY has received the executed contract. The CITY will fully execute the contract subject to resolution of Protest filings, if any, and approval by the City Council.

The undersigned will also deliver to the CITY prior to the commencement of Scope of Work the necessary original Certificates of Insurance. If services are authorized to commence prior to the execution of the Contract pursuant to and Notice to Proceed issued by the CITY, pending the execution of the Contract, the services shall be subject to the terms and conditions of the Scope of Work and the Contract.

Incorporated herein and made a part of this Proposal are the Response Data and Proposal Forms required by the Proposal Requirements.

The undersigned acknowledges receipt, understanding and full consideration of the following Addenda to the RFP Documents:

Addenda No. 1

Proposer represents that the following person is authorized to negotiate on its behalf with the CITY in connection with this RFP:

<b>Kelley Needham</b>	<b>Principal</b>	<b>909.987.0909</b>
(Name)	(Title)	(Phone)

The undersigned certifies that it has examined and is fully familiar with all of the provisions of the RFP Documents and is satisfied that they are accurate; that it has carefully checked all the words and figures and all statements made in the Proposal Requirements; that it has satisfied itself with respect to other matters pertaining to the proposal which in any way affect the Work or the cost thereof. The undersigned hereby agrees that the CITY will not be responsible for any errors or omissions in these RFP Documents.

BY: _____	Proposer's Business Address And Telephone/Fax Numbers:
(Signature)	8163 Rochester Avenue, Suite 100
Kelley Needham	Rancho Cucamonga, CA 91730
(Type or Print Name)	
Principal	P: 909.987.0909 F: 909.980.9980
(Title)	
kelley@wlcarchitects.com	
(Email Address)	

# Bidder/Contractor Statement

---

BIDDER/CONTRACTOR STATEMENT  
REGARDING INSURANCE COVERAGE  
**(Submit with IFB/RFP Package)**

This signed document must be included with your bid package in order for your bid/proposal to be considered complete!

BIDDER/CONTRACTOR HEREBY CERTIFIES that he/she has reviewed and understands the insurance coverage requirements specified as in the attached Insurance Requirements Checklist.

Should we/I be awarded the contract, we/I certify that we/I can meet the specified requirements for insurance, including insurance coverage of the subcontractors, and agree to name the **City/Successor Agency/Sanitary District** and other additional insureds as per the agreement for the work specified. And we/I will comply with the provisions of Section 3700 of the Labor Code, which require every employer to be insured against liability for worker's compensation or to undertake self-insurance in accordance with the provisions of that code, before commencing the performance of the work specified.

**WLC Architects, Inc.**

\_\_\_\_\_  
Please Print (Person, Firm, or Corporation)

\_\_\_\_\_  
Signature of Authorized Representative

Kelley Needham, Principal

\_\_\_\_\_  
Please Print (Name & Title of Authorized Representative)

September, 21 2015	909.987.0909	kelley@wlcarchitects.com
Date	Phone Number	Email

Insurance Certificates and Endorsements will also be accepted via email and must be emailed to the following email address only: [sandras@garden-grove.org](mailto:sandras@garden-grove.org). This is the preferred and quickest method of submitting insurance certificates and endorsements.

Insurance Certificates and Endorsements can also be mailed to:

City of Garden Grove  
Attention: Sandra Segawa:  
Purchasing Division  
11222 Acacia Parkway  
Garden Grove, CA 92840

NOTE: All insurance certificates and endorsements must be received by the City of Garden Grove Purchasing Division within ten (10) City working days of the original request or the City reserves the right to proceed with the next lowest responsible bidder or the next highest scoring proposer in the process.

FIRE STATION 37  
TUSTIN, CA

FIRE STATION No. 37  
ORANGE COUNTY FIRE AUTHORITY

15



# Organization

ESTABLISHED IN 1974 | BASED IN RANCHO CUCAMONGA, CA



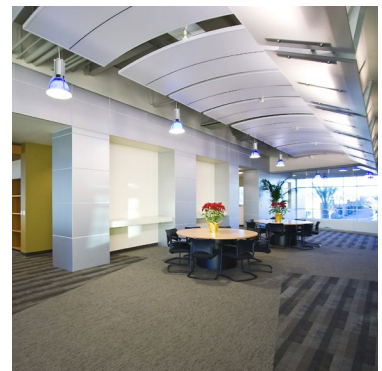
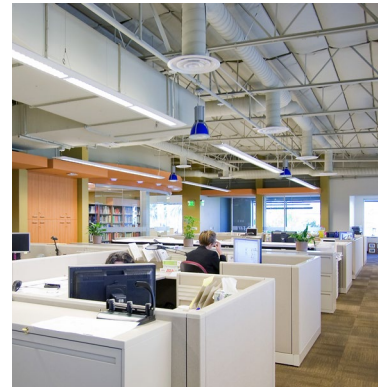
## A. INTRODUCTION TO WLC

WLC Architects, Inc. is an 86 person architectural firm located in Rancho Cucamonga, California. The firm was started in 1974 and was originally known as Wolff/Lang/Christopher Architects. Over time, the firm came to be known simply as WLC. There are currently nine principals in the firm and we now have additional offices in Folsom, Berkeley, and Carlsbad, California. Our work is divided for the most part into educational and public works projects. Since we completed our first public safety facility over 30 years ago, we have strived to become experts in the areas of

fire, police, and essential service facilities. We have designed over 100 public safety facilities, each of which is specifically tailored to the unique requirements of the Fire Department and the communities they serve. As department needs have changed, so has WLC. We have expanded our expertise to include drill towers and training facilities, vehicle maintenance, dispatch centers, and emergency operations centers. WLC is proud to be considered one of the leaders in the design of essential service facilities.

## B. FIRM PROFILE

Our staff consists of nine Principal Architects and 18 registered staff Architects along with related project managers, resource coordinators, and support staff. Currently, the annual workload of the firm represents an annual gross of over \$37.0 million in fees which represents over \$500 million of construction. The following summary provides a brief overview of our resources.



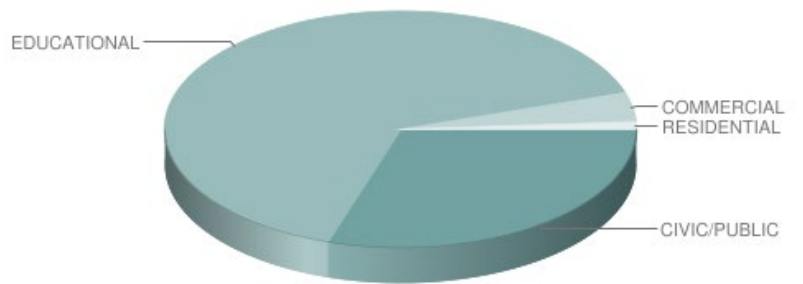




**CALIFORNIA REGISTRATION NUMBERS OF SENIOR PRINCIPALS**

PRINCIPAL	LICENSE	EXPIRATION
George Wiens	C14546	08.31.2017
Robert Hensley	C17256	04.30.2017
James P. DiCamillo	C15937	11.30.2017
Max Medina	C24882	06.30.2017
Kelley Needham	C19064	03.31.2017
Kevin MacQuarrie	C25998	01.31.2017

**TYPE OF CURRENT PROJECTS (COMBINED)**



CIVIC/PUBLIC	30%	EDUCATIONAL	65%
COMMERCIAL	4%	RESIDENTIAL	1%

**PRESENT FIRM SIZE | 86 PERSONNEL**

<b>CATEGORY</b>	<b>MALE</b>	<b>FEMALE</b>
Project Architect	9	0
Registered Staff Architect	13	5
Architectural Project Manager	18	4
Educational Resources	0	1
Technician/Designer	11	4
Technical Support/Accounting	5	14
DSA Coordinator	0	1
Quality Assurance/SpecCoordinator	1	0

**RANCHO CUCAMONGA**

8163 Rochester Avenue, Suite 100  
Rancho Cucamonga, CA 91730  
909.987.0909

**BERKELEY**

2600 Tenth Street, Suite 500  
Berkeley, CA 94710  
510.450.1999

**FOLSOM**

1110 Iron Point Road, Suite 200  
Folsom, CA 95630  
916.355.9922

**CARLSBAD**

1917 Palomar Oaks Way, Suite 110  
Carlsbad, CA 92008  
760.607.3400

**LEGAL NAME OF FIRM**

WLC Architects, Inc.

**TYPE OF OWNERSHIP**

California Corporation

**YEAR ESTABLISHED**

1974

**CAD TYPE**

AutoCAD

**PRIMARY DISCIPLINE, RESOURCE AND SERVICES**

WLC Architects provides complete architectural services, urban and regional planning, and interior design. Structural, civil, electrical, mechanical, acoustical engineering, and landscape architecture are all provided by retention of appropriate consultants highly experienced within the desired disciplines.

**CURRENT WORKLOAD**

The current workload of the staff listed in this Proposal is such that we are in an excellent position to begin your project immediately. The entire project team will remain with your project through completion. Work will be performed in our main office in Rancho Cucamonga.

**FINANCIAL REFERENCES**

Mr. Keith Matthews, Citizens Business Bank. 909.483.4303  
Mr. Scott Maxwell, Swenson Corporation. 909.989.5867  
Joan S. Calnon, Dealey, Renton & Associates. 626.844.3070

**INSURANCE**

A general liability insurance policy with a minimum coverage limit of \$2.0 million is carried by the firm as standard coverage. A professional liability insurance and errors and omissions with minimum coverage limits of \$2.0 million is carried by the firm as standard coverage. WLC shall provide verification of all required insurances.



# Experience

---

With over 40 years of experience, WLC Architects, Inc. is a leader in the field of essential service facilities. Our work has been recognized at state and national levels by the American Institute of Architects, International Association of Fire Chiefs, International Association of Police Chiefs, California Energy Commission, the Environmental Protection Agency, and the California Parks and Recreation Society. We are currently designing or have completed the following projects:

## A. PUBLIC SAFETY EXPERIENCE

### FIRE STATIONS

- Costa Mesa Fire Station 1
- Newport Beach Fire Station 5
- Eastvale Fire Station 2
- Sendero Ranch Fire Station 56
- Fontana Fire Station 73
- USC Fire Station 15
- Malibu Fire Station 71
- San Diego Fire Station 45
- Ontario Fire Station 9
- Vernon Fire Station 4
- Tustin Fire Station 37
- Los Angeles Fire Station 39
- Los Angeles Fire Station 7
- Carlsbad Fire Station 3
- Bonsall Fire Station 5
- Hesperia Fire Station 301
- Mecca Fire Station 40
- Simi Valley Fire Station 47
- Fontana Fire Station 71
- Rialto Fire Station 202
- Cypress Fire Station 17
- Chino Fire Station 7
- Scottsdale Fire Station 8
- San Mateo Fire Station 23
- Stanton Fire Station 46
- Scottsdale Fire Station 1
- LAX - ARFF Station 80
- San Jose Fire Station 2
- Fremont Fire Station 11
- Escondido Fire & Police HQ
- Hesperia Fire Station 305
- Fremont Fire Station 2
- Culver City Fire Station 3
- Indio Fire Station 5
- Fremont Fire Station 6
- Escondido Fire Station 7
- Escondido Fire Station 6
- Yucaipa Fire Station 3
- Cabazon Fire Station 24
- Escondido Fire Station 3
- Carlsbad Fire Station 6
- Houston Fire Station 8
- San Marcos Fire Station 4
- Anaheim Fire Station 11
- Lake Forest Fire Station 19
- American Canyon Fire & Police
- Atwater Fire Station 2/Police
- Fremont Fire Station 8
- Chino Fire Station 63
- Dana Point Fire Station 29
- Fairbanks Headquarters Fire Station
- San Marcos Fire Station 2
- Merced Fire Station 55
- Rancho Cucamonga Fire Station 173
- San Bernardino Fire Station 232
- Norco Fire Station 22
- Gilroy Fire Station 3
- La Quinta Fire Station 93
- Avalon Fire Station 1
- Rancho Cucamonga Fire Station 176
- Temescal Public Safety Facility
- Clovis Police and Fire Admin Bldg.
- Santa Monica Fire Station 2
- Anchorage Headquarters Fire Station 1
- Fontana Fire Station 78
- San Marcos Fire Station 1
- Chino Hills Fire Station 62
- Burbank Fire and Police Facility
- Temecula Fire Station 84
- Riverside Fire Station 12
- Arcadia Fire Station 2
- Fontana Fire Station 77
- Culver City Headquarters Fire Station 1
- Fontana Fire Station 74
- Rancho Cucamonga Fire Station 175
- Glendale Fire Station 25
- Brea Fire Station 3
- Grand Terrace Fire Station 23
- Rialto Headquarters Fire Station 1

## TRAINING FACILITIES

- Fremont Tactical Training Center
- Chino Training Facility/Fire Station 1
- Roy Wilson Training Center/Fire Station 35
- Valley Recruit Training Center/Fire Station 81
- Poway Fire Training Facility
- San Marcos Fire Training Facility
- Dinuba Public Safety Training Facility

## ARFF STATIONS

- Los Angeles International Airport, ARFF Station 80
- John Wayne Airport, ARFF Station 33
- Portland International Airport, ARFF Station 89

## REMODELS/REHABILITATION

- Pasadena Fire Station 39
- Pasadena Fire Station 32
- Anaheim Fire Station 8
- El Cajon Fire Station 7
- Norco Fire Station 21
- Ontario Fire Station 3
- Ontario Fire Station 4
- Ontario Fire Station 5
- Ontario Fire Station 2
- Hesperia Fire Station 304
- Los Angeles Fire Station 89
- Rancho Cucamonga Fire Stations 1,2,4, and 5
- Rancho Cucamonga Maintenance Facility
- North Net Fire Training Center

## LAW ENFORCEMENT

- Clovis Police and Fire Facility
- Burbank Police and Fire Facility
- Manhattan Beach Police and Fire Facility
- San Marcos Sheriff Facility
- Oceanside Police and Records Facility
- Ontario Fire and Police Administrative Facilities
- Ontario Precom and Emergency Operations Center
- County of San Bernardino Trona Sheriff's Substation
- Upland Police Facility
- Monrovia Police Facility



**CHALLENGE THE  
POSSIBILITIES BY  
EXAMINING THE  
OBVIOUS**  
wlc unifying principle No. 2

## B. SUSTAINABLE DESIGN

We believe that sustainable design opportunities abound within the design of your projects. Sustainable architecture and environmental design applications can achieve greater energy efficiency, create rewarding support environments, achieve optimum indoor air quality, and result in premium experiences that respond to the expectations and preferences of today's fire departments.

The impact of past, present, and future developments on the environment, and how they will dramatically affect our future quality of life is a major concern and offers many challenges and opportunities. WLC has completed a variety of demonstration, educational, and interpretive projects that involve the preservation of natural habitats, have become models for energy efficiency, and pioneer recycled building concepts through modernization and adaptive reuse. Along with this experience, WLC brings a stellar team of qualified sustainable design professionals.

Greening the development of public and commercial facilities is not a solution by itself, but it represents tremendous potential. Meaningful accomplishments in energy efficiency, environmental design, and sustainable architecture reward client organizations who see valuable, healthy, and high performing environments. It is our responsibility to identify possible strategies, develop facility concepts, and propose the best alternatives.

WLC is a member of the United States Green Building Council (USGBC), and has participated with the USGBC's Leadership in Energy and Environmental Design (LEED) program on a variety of projects. Twenty-two members of the firm are LEED Certified Green Building Professionals.

In addition to the LEED program, WLC has extensive experience in incorporating the requirements of the California CALGreen Building Code.

PROJECT NAME	LEED LEVEL
Eastvale Fire Station No. 2	Silver
Los Angeles Fire Station No. 7	Silver
Los Angeles Fire Station No. 39	Silver
Cathedral City Fire Station 411	Silver
Chino Fire Station 1	Silver
Chino Training Center	Silver
Chino Fire Station 7	Silver
CSU San Marcos Public Safety Building	Gold
Fontana Fire Station 71	Silver
Fremont Fire Station 2	Silver
Fremont Fire Station 6	Certified
Fremont Fire Station 11	Gold
LAX ARFF Station 80	Gold
Napa County Sheriff	Gold
North Hollywood Fire Station 89	Certified
San Diego Fire Station 45	Silver
San Marcos Fire Station 4	Gold
San Mateo Fire Station 23	Silver
Scottsdale Fire Station 1	Platinum
Scottsdale Fire Station 8	Platinum
Tustin Fire Station 37	Certified
Valley Recruit Training and Fire Station 81	Silver

## C. RECENTLY COMPLETED PROJECTS

The following pages provide some additional information on specific projects recently completed by our firm.

# FIRE STATION 37

Tustin, CA



Fire Station No. 37 is a new facility built by the City of Tustin for the Orange County Fire Authority. The corner site is located in the northeast portion of the city in a predominantly residential area. The station is designed to accommodate eight fire fighters in an individual dormitory setting. Other station features include a two-bay, double-deep apparatus bay, administrative offices, kitchen, dining room, day room, physical training room, and the various support spaces required for a facility of this type. The design of the facility utilizes the administrative areas of the station as a buffer between the areas of the station more typically accessible to the public and those areas dedicated to the day-to-day living activities of the fire fighters. Site features include drive-through access, secured fire fighter parking, hose tower, sand pit, and an above ground fuel station. The station was designed using a combination of plaster and stone veneer in keeping with the architectural style of the area. Sloped roof forms are used in conjunction with parapet areas designed to screen mechanical equipment. The station achieved a Silver LEED rating in keeping with the sustainable goals of the City of Tustin.

**Scope of Work**  
9,667 SF

**Construction Cost**  
\$4,192,000

**Completed**  
March 2014

**WLC Team**  
Kelley Needham, AIA, Principal-in-Charge  
Shih-Jing Yen, Project Architect  
Bernhard Wassink, Sustainability Coordinator

**Contact**  
Mr. Chris Decoursey, Construction Manager  
Orange County Fire Authority  
(714) 573-6473  
chrisdecoursey@ocfa.org

Mr. Steve Chambers, Property Manager  
Orange County Fire Authority  
(714) 573-6471  
stevechambers@ocfa.org

# FIRE STATION 71

Fontana, CA



Fire Station No. 71 is the newest facility built by the City of Fontana for the San Bernardino County Fire Department. One of the unique aspects of the project was that the new station had to be built around and incorporate the original station, which was built in 1921 and had suffered through a number of additions. The site is located adjacent to City Hall and is part of a number of improvements to the overall Civic Center. The new station is designed to accommodate twelve fire fighters in an individual dormitory setting. Other station features include a four-bay, double-deep apparatus room, administrative offices, kitchen, dining room, day room, physical training room, locker room, and the various support spaces required for a facility of this type. The existing station was brought up to current code requirements and was scaled back to the original station layout. The existing station has been redesigned to be operated as a small museum for the City and the Fire Department. Site features for the project include secure fire fighter parking, above ground fuel station, and a covered patio area. The station was designed using a number of details from the original station as well as the overall design objectives of the new Civic Center. The station achieved a Silver LEED rating in keeping with the sustainable goals of the City of Fontana.

## Scope of Work

Fire Station- 15,838 SF  
Museum- 2304 SF  
Storage Building- 160 SF

## Construction Cost

\$6,186,272

## Completed

January 2012

## WLC Team

Kelley Needham, AIA, Principal-in-Charge  
Simon Chang, Project Architect  
Shih-Jing Yen, Project Manager  
Bernhard Wassink, Sustainability Coordinator

## Contact

Ms. Noel Castillo, Senior Engineer  
City of Fontana  
(909)350-7632  
ncastillo@fontana.org

Mr. Terry Welsh, Division Chief (Retired)  
San Bernardino County Fire Department  
(760) 954-7779  
tnkwelsh@verizon.net



# FIRE STATION 46

Stanton, CA



Fire Station No. 46 is a new fire station built by the City of Stanton for the Orange County Fire Authority. The corner site is located in an area of mixed residential and commercial use. The station is designed to accommodate nine fire fighters in an individual dormitory setting. Other station features include a two-bay, double-deep apparatus room, administrative offices, kitchen, dining room, day room, physical training room, shop, and the various support spaces required for a facility of this type. Due to the limited size and unusual configuration of the site, circulation within the station is designed around core work and living spaces in order to maximize daylight opportunities for more traditionally occupied areas. Considerable effort was made to minimize the wasted space which typically occurs in an angular floor plan arrangement. While visitor parking is provided on-site, fire fighter parking is achieved by means of a separate secured area adjacent to the new station. The station was designed using a combination of simulated wood siding and stone veneer in keeping with the architectural style of the adjacent homes. Sloped roof forms are used in conjunction with parapet areas designed to screen mechanical equipment.

**Scope of Work**  
8,658 SF

**Construction Cost**  
\$ 3,750,000

**Completed**  
September 2011

**WLC Team**  
Kelley Needham, Principal-in-Charge  
Simon Chang, Project Architect  
Jeremy Chou, Project Manager

**Contact**  
Mr. Chris Decoursey, Construction Manager  
Orange County Fire Authority  
(714) 573-6473  
chrisdecoursey@ocfa.org

Mr. Steve Chambers, Property Manager  
Orange County Fire Authority  
(714) 573-6471  
stevechambers@ocfa.org

# FIRE STATION 1

Chino, CA



A new fire station and training center for the City of Chino and the Chino Valley Independent Fire District. The project is located on 4 acres in an industrial portion of the City. In addition to a 5-bay, 13,230 SF Fire Station, the project includes a 6,630 SF Classroom/Administration Building and a 3,953 SF, 5-story, pre-manufactured training tower. The Classroom/Administration Building includes administrative offices, shower and locker facilities, break room, and multiple classrooms. The classrooms include both tiered and flat floor layouts for maximum flexibility. State of the art audio/visual systems are integrated throughout the project.

The training tower features a brick veneer exterior, multiple roof configurations, gas-fired simulators, Class A burn areas, and integrated confined space rescue.

Site features include a drafting pit, trench rescue, residential and commercial vent props, vehicle extraction, gas-fired vehicle prop, debris pile, utility pole prop, covered training area, and connections for driving simulators. The site also includes an extensive subterranean confined space prop which is internally lit and terminates in the main room of the training tower.

## Scope of Work

Fire Station - 13,230 SF  
Classroom/Administration Building - 6,630 SF  
Training Tower - 3,953 SF

## Construction Cost

\$ 7,905,727

## Completed

October 2011

## WLC Team

Kelley Needham, AIA, Principal-in-Charge  
Shih-Jing Yen, Project Architect  
Bernhard Wassink, Sustainability Coordinator

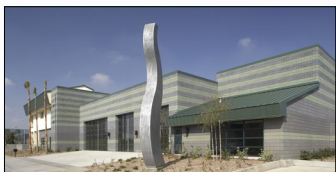
## Contact

Mr. Michael A. Kolling, Project Manager  
City of Chino  
(909) 334-3412  
mkolling@cityofchino.org

Mr. Tim Stewart, Battalion Chief  
Chino Valley Independent Fire District  
(949) 533-3849  
tstewart@chofire.org

# VALLEY RECRUIT TRAINING CENTER

Los Angeles, CA



A new training center for the Los Angeles Fire Department. Completed as part of the City's Fire Bond Program, the project is located on 4.5 acres in the neighborhood of Panorama City. In addition to a 7-bay, 16,547 SF Fire Station, the project includes a 14,116 SF Classroom/Administration Building, a 7-story, 7,771 SF training tower, and an 8,483 SF apparatus storage building. The Classroom/Administration Building includes administrative offices, shower and locker facilities, break room, weight training room, and multiple classrooms. The classrooms include both clean and dirty spaces which provide direct access to a large concrete drill yard.

The training tower includes a number of gas-fired simulators, elevator prop, artificial smoke, Class A burn areas, observation room, fire simulation lighting, standpipe prop, covered roof area, and a sloped ventilation prop. Large site walls are utilized for ladder exercises and multiple store front configurations. The training tower also includes a complete water recovery and recirculating system which allows for a significant cost reduction in the overall use of the facility.

## Scope of Work

Fire Station - 16,547 SF  
Classroom/Administration Building - 14,116 SF  
Apparatus Storage Building - 8,483 SF  
Training Tower - 7,771 SF

## Construction Cost

\$15,115,000

## Completed

January 2007

## WLC Team

Kelley Needham, AIA, Principal-in-Charge  
Simon Chang, Project Manager

## Contact

Mr. Allan Kawaguchi, Bond Program Manager  
City of Los Angeles  
(213) 580-9917  
Allan.Kawaguchi@lacity.org

Mr. Curt Klaftha, Battalion Chief  
Los Angeles Fire Department  
(213) 216-4099  
curt.klaftha@lacity.org

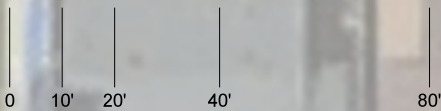


**GARDEN GROVE FIRE STATION No. 6**

**SITE 2: WESTHAVEN PARK**

09/21/2015

SITE AREA: 1.123 AC (NOT INCLUDING ADDITIONAL PARKING AREA OPTION)

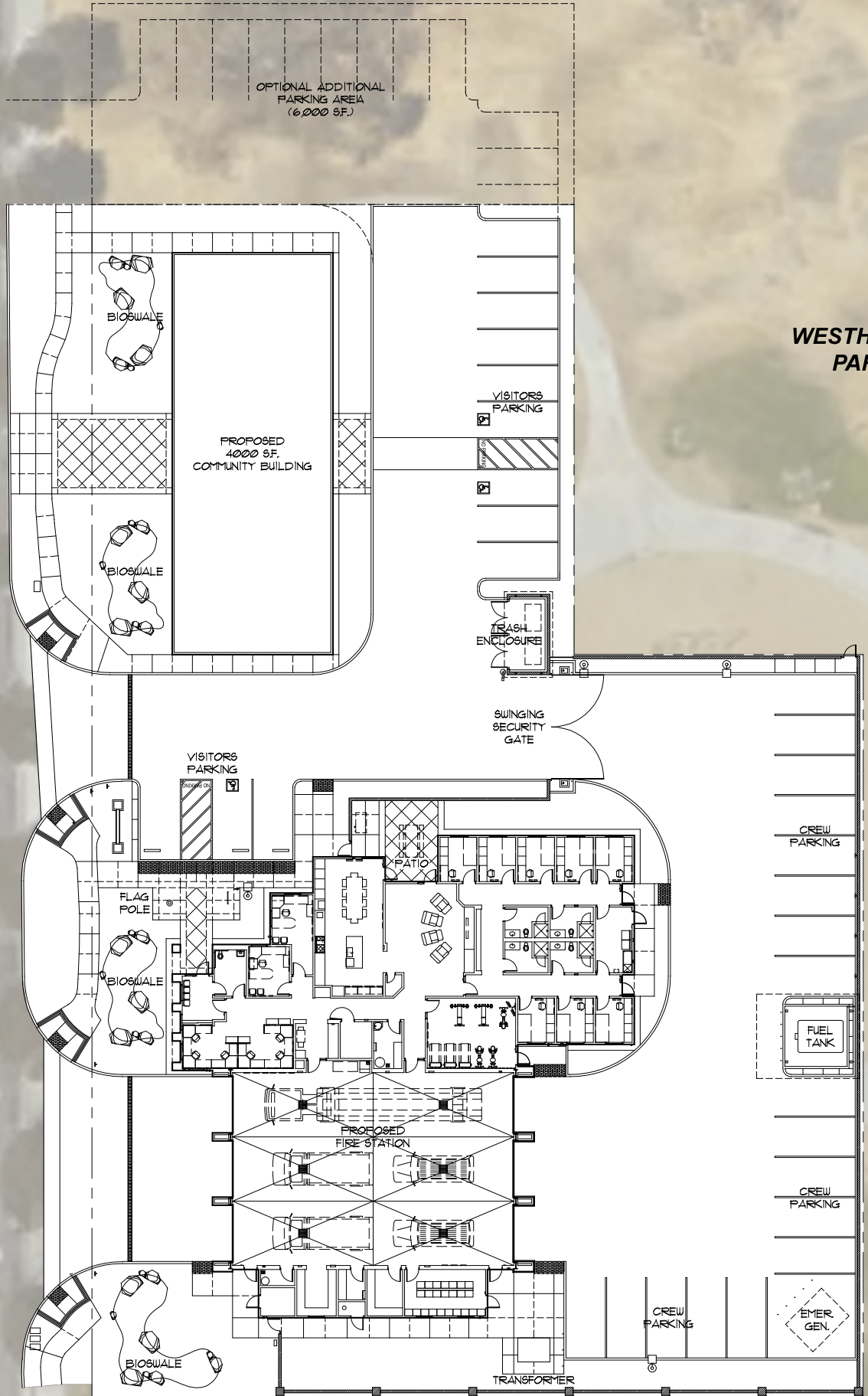


SCALE: 1" = 40'-0"



**WESTHAVEN  
PARK**

**WEST STREET**



# Key Personnel

---

The staff which we propose for the Project Team is highly experienced and well qualified in the planning and design of public safety facilities. Our team members are skilled professionals having extensive experience in the assessment of space needs, site and building analysis, programming, interior design, and organizational management.

## **KELLEY NEEDHAM, Principal-In-Charge**

Mr. Needham is a Principal of the firm and will serve as the Project Architect for all phases of the project.

Mr. Needham will be the main project contact and shall provide the special expertise related to Fire Station design.

Mr. Needham will be working closely with the City and Fire Department staff, as well as coordinating the efforts required of our consulting team.

## **SHIH-JING YEN, Project Manager**

Mr. Yen will serve as Project Manager and will be primarily responsible for the layout and design of the station.

Mr. Yen will also be responsible to ensure all programmatic and code requirements are met. During the design phase, Mr. Yen will be responsible for producing design presentations and other visual communication materials.

Mr. Yen will coordinate the preparation of the final construction documents and provide administrative support throughout the entire construction process.

## **BERNHARD WASSINK, Sustainability Coordinator**

Mr. Wassink will serve as our Sustainability Coordinator for the project. Mr. Wassink has extensive experience with a number of sustainability tracking programs including LEED, CHPS, and the new CALGreen code requirements. During the initial phases of the project, Mr. Wassink will evaluate the project's sustainable potential, establish sustainable goals, and develop a path toward the desired point level. Mr. Wassink will also ensure that the sustainability requirements are incorporated into the construction documents during all design phases.

## **DON RICE, Quality/Cost Assurance**

Mr. Rice has been with the firm since 1988 and serves as our Quality Assurance Coordinator. Mr. Rice oversees the entire office's work in the areas of specifications, cost and quality control. He stays abreast of all recent governmental changes and product updates. Most importantly he updates WLC's Contract Document Checklist. This comprehensive document is used by the design team and our consultants to ensure a thorough review of your project prior to the start of construction.





# Kelley Needham, AIA

Architect, Principal

Mr. Needham joined WLC Architects, Inc. in April 1986. He has brought to the firm a wide variety of experience and expertise in project design and construction document preparation. His architectural education was taught with a strong emphasis on human needs and how to integrate them into the built environment. This emphasis was combined with a methodical and logical design process geared toward the achievement of appropriate design solutions. He has experience in a wide variety of project types but has specialized in the design of both public and essential service facilities.

### EDUCATION

California Polytechnic University, Pomona  
Bachelor of Architecture, 1985

### REGISTRATION

Architect, California - 19064

### PROFESSIONAL AFFILIATIONS

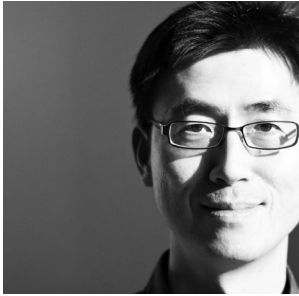
Los Angeles Chapter  
American Institute of Architects

### FIRE STATIONS

- Costa Mesa Fire Station 1
- Newport Beach Fire Station 5
- Eastvale Fire Station 2
- Sendero Ranch Fire Station 56
- Fontana Fire Station 73
- USC Fire Station 15
- Malibu Fire Station 71
- Carlsbad Fire Station 3
- Los Angeles Fire Station 7
- Los Angeles Fire Station 39
- San Diego Fire Station 45
- Bonsall Fire Station 5
- Ontario Fire Station 9
- Vernon Fire Station 4
- Fontana Fire Station 71
- Rialto Fire Station 2
- Scottsdale Fire Station 1
- Scottsdale Fire Station 8
- Stanton Fire Station 46
- Mecca Fire Station 40
- Fremont Fire Station 11
- Simi Valley Fire Station 47
- Cypress Fire Station 17
- Chino Fire Station 7
- Hesperia Fire Station 301
- Hesperia Fire Station 305
- Fremont Fire Station 2
- Escondido Fire and Police
- Indio Fire Station 5
- Culver City Fire Station 3
- Fremont Fire Station 6
- Escondido Fire Station 7
- Escondido Fire Station 6
- Yucaipa Fire Station 3
- Cabazon Fire Station 24
- Escondido Fire Station 3
- Carlsbad Fire Station 6
- Houston Fire Station 8
- San Marcos Fire Station 4
- Lake Forest Fire Station 19
- Fremont Fire Station 8
- Chino Fire Station 63
- Dana Point Fire Station 29
- Fairbanks Headquarters Fire Station
- San Marcos Fire Station 2
- Rancho Cucamonga FS 173
- San Bernardino Fire Station 232
- Norco Fire Station 22
- Temescal Public Safety Facility
- Santa Monica Fire Station 2
- La Quinta Fire Station 93
- Rancho Cucamonga Fire Station 176
- Anchorage Headquarters Fire Station 1
- Fontana Fire Station 78
- San Marcos Fire Station 1
- Chino Hills Fire Station 62
- Burbank Fire and Police Facility
- Temecula Fire Station 84
- Riverside Fire Station 12
- Fontana Fire Station 77
- Fontana Fire Station 74

### ARFF STATIONS

- LAX - ARFF Station 80
- John Wayne Airport - ARFF Station 33
- Portland International Airport - ARFF 89



---

## Shih-Jing Yen

Architect, Project Manager

Shih-Jing Yen joined WLC in 2005. In his role as a Project Architect, Mr. Yen is responsible for the complete delivery of the project from Concept through Occupancy. WLC's Project Architects are intimately involved in all stages of project delivery and actively participate with both the WLC Project Team and the consulting engineers. The Project Architect reports directly to the Principal-in-Charge and works in close coordination with the Project Manager and Design Team members on a daily basis. Mr. Yen is also responsible for overseeing and updating the Project Budget, Schedule, and Scope. Our Project Architects can often be the first line of communication between our Client and the firm.

### EDUCATION

National Taiwan University, Taipei, Taiwan  
Master of Science  
University of Michigan, Ann Arbor, Michigan  
Master of Architecture

### REGISTRATION

LEED™ AP BD+C

### FIRE STATIONS

- Eastvale Fire Station 2
- Fontana Fire Station 73
- Bonsall Fire Station 5
- Ontario Fire Station 9
- Sendero Ranch Fire Station 56
- Tustin Fire Station 37
- Hesperia Fire Station 301
- Hesperia Fire Station 305
- Chino Fire Station 1 and Training Center
- Chino Fire Station 7
- Fontana Fire Station 71
- Rialto Fire Station 202
- Mecca Fire Station 40
- Hesperia Fire Station 304
- Malibu Fire Station 71
- Carlsbad Fire Station 3

### REFERENCES

Mr. Noel Castillo  
City of Fontana  
(909) 350-7632  
ncastillo@fontana.org

Mr. Chris DeCoursey, Construction Manager  
Orange County Fire Authority  
(714) 573-6473  
chrisdecoursey@ocfa.org

Mr. Michael A. Kolling, Project Manager  
City of Chino  
(909) 334-3412  
mkolling@cityofchino.org





## Bernhard Wassink

LEED AP, Sustainability Coordinator

Mr. Wassink joined WLC Architects in 2000 as our Sustainable Design Coordinator.

He has been involved in a variety of projects focusing on project design, design development and construction documents. Mr. Wassink has managed a number of LEED projects and is responsible for LEED training within the firm. His knowledge of LEED is grounded in practical experience that has given him the ability to accurately evaluate a project's potential, establish sustainability goals, fulfill and document program requirements, manage other members of the design team, and guide a LEED application through the process until final certification.

### EDUCATION

Taylor University Upland, IN  
Bachelor of Science, Business Systems,  
Concentrations in Finance & Art, 1998  
California Polytechnic University,  
Pomona, CA  
Master of Architecture  
Concentration Historic Preservation  
2004

### PROFESSIONAL AFFILIATIONS

LEED AP

### FIRE STATIONS

- Eastvale Fire Station 2
- Fontana Fire Station 73
- Tustin Fire Station 37
- Sendero Ranch Fire Station 56
- Los Angeles Fire Station 81
- Los Angeles Fire Station 89
- Ontario Fire Station 9
- Cabazon Fire Station 24
- Yucaipa Fire Station 9
- Escondido Fire Station 3
- Escondido Fire Station 6
- Escondido Fire Station 7
- Houston Fire Station 1
- Anaheim Fire Station 11
- San Diego Fire Station 45
- San Marcos Fire Station 4
- Culver City Fire Station 3
- Fremont Fire Station 6
- Carlsbad Fire Station 6
- Lake Forest Fire Station 19
- Dana Point Fire Station 29
- Fairbanks Headquarters FS
- San Marcos Fire Station 2
- Norco Fire Station 22
- La Quinta Fire Station 93

### ARFF STATIONS

- LAX ARFF Station No. 80

### TRAINING FACILITIES

- Dinuba Public Safety Training Facility
- Fremont Tactical Training Center
- Chino Training Facility
- Roy Wilson Training Center
- Los Angeles Valley Recruit Training Center
- Poway Fire Training Facility
- South Central Recruit Training Center

### REFERENCES

Mr. Greg Woolf, Division Chief (Retired)  
San Marcos Fire Department  
(760) 594-4705  
gwoolf1950@cox.net

Ms. Kathryn Ferrell, CEQA Coordinator  
San Diego Unified School District  
(760) 622-6193  
kferrell@sandi.net

Mr. Terry Welsh, Division Chief (Retired)  
San Bernardino County Fire Department  
(760) 954-7779  
tnkwelsh@verizon.net

# Consultant Team

---

We have selected our proposed consulting team based upon their combined technical expertise and capabilities for performing necessary consulting services on facilities of similar size and scope. Our consultants are not specialty consultants brought in to make up for our own lack of specific project experience. In most cases, we have a long history and close working relationship with each firm. All of our consultants utilize computer-aided design and management systems to interface with our own CAD systems. Specifically, our consulting team will be able to provide services in the following areas:

## A. CONSULTING TEAM

### CIVIL ENGINEERING

MSL Engineering, Inc.  
402 West Arrow Highway, Suite 4  
San Dimas, CA 91773  
(909) 305-2395

MSL Engineering is a nine employee firm specializing in civil engineering, environmental planning, and land surveying. Established in 1996, MSL Engineering has been responsible for most of the civil engineering design on fire facilities completed by WLC. Mark Lamoureux, President of MSL Engineering, has been working with our firm since 1985.

### ENVIRONMENTAL

Chambers Group, Inc.  
5 Hutton Centre Drive, Suite 750  
Santa Ana, CA 92707  
(949) 261-5414

Chambers Group, is a certified DVBE providing environmental consulting services to private businesses, industry and government agencies throughout the western United States. With roots in environmental compliance and natural resources management, Chambers Group works on behalf of its clients to avoid or reduce project impacts to the environment while keeping projects moving forward.

### COST ESTIMATING

Erickson-Hall Construction Company  
500 Corporate Drive  
Escondido, CA 92029  
(760) 796-7700

Erickson-Hall construction company is a recognized leader in the construction of essential service facilities. Established in 1998, they offer a wide range of construction and construction related services. They offer preconstruction, general contracting, cost estimating, design-build and program management. Erickson-Hall has been working with our firm since 2006.





## Mark S. Lamoureux President, MSL Engineering

Mr. Lamoureux is the President and Principal Engineer for MSL Engineering since its establishment in January 1996. MSL Engineering is a civil engineering and land surveying firm specializing in site development for essential service facilities.

Mr. Lamoureux has played an active role in the majority of projects designed by WLC Architects acting as the principal engineer, principal surveyor and project manager. Mr. Lamoureux has extensive experience in the areas of site engineering including grading, drainage, utility design, and CEQA documentation.

### FIRE STATIONS

- Hesperia Fire Station 305
- Bonsall Fire Station 5
- Ontario Fire Station 9
- Vernon Fire Station 4
- Fontana Fire Station 71
- Simi Valley Fire Station 47
- Hesperia Fire Station 301
- Mecca Fire Station 40
- Anaheim Fire Station 11
- Culver City Fire Station 3
- San Marcos Fire Station 4
- Fremont Fire Station 2
- Carlsbad Fire Station 6
- Fremont Fire Station 6
- Fremont Fire Station 8
- San Diego Fire Station 45
- Chino Fire Station 63
- Dana Point Fire Station 29
- Lake Forest Fire Station 19
- San Marcos Fire Station 2
- JWA - ARFF 33
- Norco Fire Station 22
- La Quinta Fire Station 93
- Corona Public Safety Facility
- Santa Monica Fire Station 2
- Fontana Fire Station 78
- Chino Hills Fire Station 62
- Burbank Fire and Police Facility
- Chino Fire Station 1
- Chino Fire Station 7
- Fontana Fire Station 73
- Malibu Fire station 71

### TRAINING FACILITIES

- Fremont Tactical Training Center
- Chino Training Facility/Fire Station 1
- Roy Wilson Training Center/Fire Station 35
- Los Angeles Valley Recruit Training Center
- Poway Fire Training Facility
- San Marcos Fire Training Facility
- South Central Recruit Training Center
- Dinuba Public Safety Training Facility

### REFERENCES

Mr. Paul Koshmider, Director of Construction  
In-N-Out Burger, Inc.  
(626) 813-8213  
pkoshmider@innout.com

Mr. Terry Smith, Senior Engineer  
City of Carlsbad  
(760) 602-2765  
terry.smith@carlsbadca.gov

Mr. David R. Burkett, Project Manager  
City of Hesperia  
(760) 947-1202  
dburkett@cityofhesperia.us

### EDUCATION

California Polytechnic University, Pomona  
Bachelor of Science in Civil Engineering, 1981  
Graduated Magna Cum Laude

### REGISTRATION

State of California Registered Civil Engineer  
No. 38382, 1984  
State of California Professional Land Surveyor  
No. 5794, 1987

### PROFESSIONAL AFFILIATIONS

Life Member, Tau Beta Pi, National  
Engineering Honor Society  
Member, The American Society of  
Civil Engineers  
Corporate Member, The California Land  
Surveyor's Association  
Member, American Congress on  
Surveying and Mapping, NSPS



## John E. Gifford Program Director, Chambers Group

Mr. Gifford has more than 28 years of experience in managing environmental studies and compliance programs. He has experience with coordination and supervision of complex, controversial programs for local municipalities, county governments and federal agencies. Mr. Gifford is a recognized expert in CEQA/NEPA compliance and Program Management. He is the recipient of various awards for excellence from the Department of Defense for his work on critical infrastructure EIR/EIS documents and for strategic environmental planning programs. Mr. Gifford was recognized by the General Services Administration as No.1 in customer service for seven consecutive years. He is the author of various articles covering economic trends, community BRAC environmental approaches, and legal analysis.

### PROJECT EXPERIENCE

- Hacienda at Fairview, County of San Bernardino
- Deep Creek EIR, County of San Bernardino
- Land & Airspace Acquisition Program, US Army
- Soka University, PM/Planning Services
- Marymount College Facilities Expansion Project EIR
- Geothermal Resources Leasing, Bureau of Land Management
- Clean Water Factory Project, EIS/EIR, City of San Bernardino Municipal Water District
- Eagle Canyon Dam EA/EIR, Riverside County Flood Control & Water Conservation District
- Pacific L.A. Marine Terminal SEIS/SEIR, Port of Los Angeles
- PL984 Reclaimed Water Project, U. S. Department of the Interior
- San Jacinto River Use Attainability Study, San Jacinto
- AB3030 Groundwater Basin Management Plan EIR, San Jacinto Groundwater Pumpers Association
- Regional Recharge and Recovery Project (R3), Mojave Water Agency (MWA)
- Whittier Narrows Dam Deviation Study, Water Replenishment District of Southern California

### REFERENCES

- Ruth Villalobos, Chief of Planning  
USACE Los Angeles  
(909) 685-5942  
rvillalobos@rvacorp.com
- Gary Ethridge, President  
G&G Environmental  
(951) 858-1542  
ge@ggcorp.net
- Gerald Shoaf, Esq., Managing Partner  
Redwine & Sherrill  
(951) 684-2520  
gshoaf@redwineandsherrill.com
- Greg Gage, Engineering Manager  
San Bernardino Municipal Water Department  
(909) 384-5386  
Gage\_Gr@sbcity.org

### EDUCATION

- MPA, Public Administration, California State University, Northridge, In progress
- LLB, Law, Western State University College of Law, Fullerton, 1990
- A.S., Biology, Chaffey College, 1989
- A.A., Economics, Chaffey College, 1989

### CERTIFICATES

- "Operation of Wastewater Treatment Plants,"  
University of California, Sacramento
- "Advanced Wastewater Treatment Processes,"  
University of California, Sacramento
- "Pretreatment Inspection,"  
University of California, Sacramento

### PROFESSIONAL AFFILIATIONS

- American Planning Association
- Association of Environmental Professionals  
Planning Commission



## Nathan Complin Project Manager, Erickson-Hall

Nathan Complin joined Erickson-Hall in 1999. His construction industry career spans over 15 years. For the last 10 years, he has been a Senior Manager utilizing the Design-Build and Design-Assist-Build delivery methods to design and construct essential services facilities throughout Southern California. His expertise in directing all preconstruction and construction phase activities, including design, constructability, value engineering, estimating, scheduling, and construction planning and execution. He will assist with establishing and updating the project budget, including cost coding structure, tracking payments, cash flow analysis, cost forecasts and reviewing and approving changes to the budget and project scope. Nathan will work closely with the design team to establish and enforce stringent, project-specific quality and jobsite safety standards. He is a seasoned construction professional offering extensive experience working with owners, end-users and designers as an advocate for design efficiency to ensure the owner's program is maximized within established budget and schedule parameters.

### FIRE STATIONS

- Tustin Fire Station No. 37
- Sendero Fire Station No. 56
- Stanton Fire Station No. 46
- Malibu Fire Station No. 71
- Anaheim Fire Station No. 11
- Terra Lago Fire Station No. 5
- Escondido Fire Station No. 4
- Escondido Fire Station No. 6
- Escondido Fire Station No. 7
- Vista Fire Station No. 1
- Vista Fire Station No. 5
- Vista Fire Station No. 6
- Chula Vista Fire Station No. 2
- Chula Vista Fire Station No. 4
- Chula Vista Fire Station No. 6
- Alpine Fire Station No. 17
- Desert Hot Springs Fire Station
- El Cajon Fire Station No. 8
- Fontana Fire Station No. 79
- La Mesa Fire Station No. 11
- Murrietta Fire Station No. 4
- Rancho Santa Fe Fire Station No. 2
- San Diego Fire Station No. 12
- San Diego Fire Station No. 31

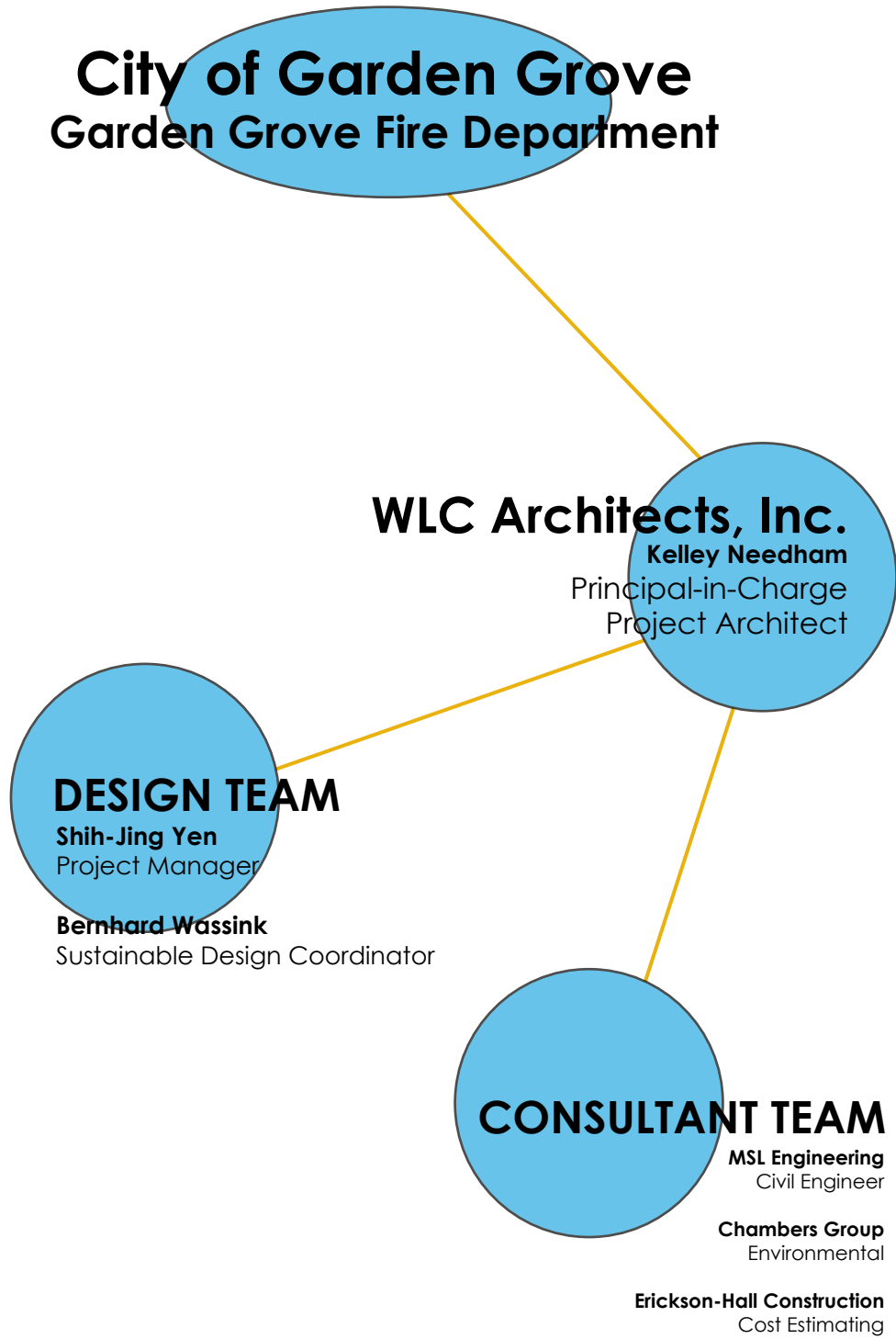
### REFERENCES

- Mr. Chris DeCoursey, Construction Mgr.  
Orange County Fire Authority  
Phone: (714) 573-6473  
Email: [chrisdecoursey@ocfa.org](mailto:chrisdecoursey@ocfa.org)
- Mr. Steve Chambers, Property Manager  
Orange County Fire Authority  
Phone: (714) 573-6471  
Email: [stevechambers@ocfa.org](mailto:stevechambers@ocfa.org)
- Ms. Joyce Masterson, Project Manager  
City of Escondido  
Phone: (760) 839-4621  
Email: [jmasterson@escondido.org](mailto:jmasterson@escondido.org)

### EDUCATION

BS Construction Engineering & Management  
CSU Long Beach, 2002

**B. ORGANIZATIONAL CHART**





# Project Approach

---

## A. DESIGN TEAM METHODOLOGY

Our firm consistently utilizes a Design Team approach for establishing project delivery and control during all phases of planning and design. The primary contact will be our Principal-in-Charge, Kelley Needham, AIA. The Principal-In-Charge will be responsible for coordinating our in-house architectural team and our consultant team. The Team remains with the project from concept through completion. Therefore, continuity of the project participants and of the process is achieved. The Design Team shall produce all necessary reports, studies, drawings, models, renderings, and cost estimates, and shall perform all necessary administrative, management, and coordination services throughout the entire course of the project.

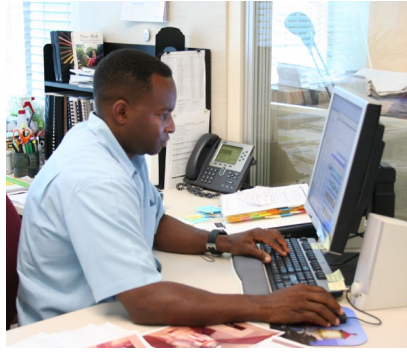
Our organization reflects a commitment towards planning and design in a team approach rather than on an individual basis. We feel that the final product can be substantially improved by a process which reflects many more design alternatives and ideas available for consideration and input. We believe that the success of the project depends upon involving all appropriate parties early on and throughout the planning and design process. It is important that the Fire Department and City Staff provide review and input early on in the conceptual Design Phase of the project. With our Fire Station design experience, it is our job to explore options and alternatives that meet the needs of the program, and to provide design schemes that can be depended upon to be the best possible solutions.

## B. PROJECT COMMITTEE

Our approach to your project depends upon a participatory process with key City and Fire Department staff who are involved within a given consideration of each of the project areas. We recommend that a Project Committee be established with a specific review process to enhance project communications. The exchange of information is critical to the process of planning, design, and construction. Periodic progress and review meetings will be established with milestone presentations and periods for comprehensive review during the entire project process. Beneficial and informal design workshops are also envisioned to explore options and alternatives likely to be discovered in the planning and design process.







**C. KEY OBJECTIVES**

Because of the factors that will influence the overall design of the facility, it is necessary that the Project Team have appropriate resources, expertise, and knowledge to provide the correct methodology to resolve project requirements. More importantly, we perceive that many opportunities and challenges exist in the design of this project. Our approach to the design of your project establishes a well crafted set of work tasks, responsibilities, and products to provide thoughtful solutions that innovate the best possible responses to the Fire Department needs, opportunities, and available resources. We will seek to explore the following objectives in your project:

- 1. Creation of an efficient, functional, and interactive facility responsive to the service objectives of the Fire Department.
- 2. Consolidation of building and site elements to minimize development impacts and to maximize continuity of structural, mechanical, electrical, telecommunications, and site infrastructure components.
- 3. Achievement of a compact plan to establish clear public, staff, and departmental areas in order to maximize functional efficiency, privacy, and security.
- 4. Explore opportunities to use combined passive and active technologies for energy conservation.
- 5. Consider and select appropriate environmental systems, materials, and finishes that achieve work and

living environments while producing a durable, low maintenance facility.

- 6. Prepare alternative design concepts and recognize that value, performance, and image characteristics make significant contributions to team building, retention, and recruitment of valuable personnel.
- 7. Create forward thinking environments that are flexible to ever changing technologies and that anticipate future change and expansion.
- 8. A community oriented, inviting, and friendly design that initiates public confidence and support while reinforcing the caliber of professionalism and camaraderie within the Fire Department.
- 9. A personalized setting to promote gender privacy is essential to eliminating stress and to respond to the individual housing needs of both male and female fire fighters.

**MAINTAIN  
OPEN & CLEAR  
COMMUNICATION**

wlc unifying principle No. 4

# Scope of Work/Fee

---

## A. SCOPE OF WORK

In accordance with the requirements of the RFP, the following is our understanding of the scope of work:

1. Develop a conceptual level site plan and building footprint for each of the 3 sites.
2. Develop a planning level construction cost estimate for each of the 3 sites.
3. Provide analysis and recommendations on the environmental (CEQA) review process anticipated for each of the 3 sites including the expected consulting fees that will be required.

## B. FEE

Our fee for the above referenced scope of work is as follows:

Basic Fee	\$9,000.00
Reimbursable Allowance	500.00
<b>Total Fee</b>	<b>\$9,500.00</b>

## C. SCHEDULE

All work is expected to be completed in 30 days.

## D. HOURLY RATES

Principal	\$210.00
Associate Principal/Director	\$185.00
Associate Coordinator	\$185.00
Senior Project Architect	\$170.00
Senior Project Manager	\$170.00
Project Architect	\$145.00
Project Manager	\$145.00
Technical Level I	\$ 95.00
Technical Level II	\$ 85.00
Technical Support	\$ 75.00





23022

23022 ORANGE COUNTY  
FIRE AUTHORITY  
FIRE STATION NO. 19

# References/Letters

---

The following are some specific references for our firm. WLC takes great pride in not only the facilities we help create but the relationships that develop with many County, City, and Fire Department representatives.

## ORANGE COUNTY FIRE AUTHORITY

Mr. Steve Chambers, Property Manager  
Orange County Fire Authority  
Phone: (714) 573-6471  
Email: stevechambers@ocfa.org

Mr. Chris DeCoursey, Construction Mgr.  
Orange County Fire Authority  
Phone: (714) 573-6473  
Email: chrisdecoursey@ocfa.org

## CITY OF SAN MARCOS

Mr. Todd Newman, Fire Chief (R)  
San Marcos Fire Department  
Phone: (760) 594-4704  
Email: newman62@aol.com

Mr. Brett Vanwey, Fire Chief  
San Marcos Fire Department  
Phone: (760) 594-4700  
Email: bvanwey@san-marcos.net

Mr. Greg Woolf, Division Chief (R)  
San Marcos Fire Department  
Phone: (760) 594-4705  
Email: gwoolf1950@cox.net

## CHINO VALLEY FIRE DISTRICT

Mr. Tim Stewart, Battalion Chief  
Chino Valley Independent Fire District  
Phone: (949) 533-3849  
Email: tstewart@chofire.org

Mr. Luke Nurre, Fire Fighter (R)  
Chino Valley Independent Fire District  
Phone: (909) 907-0166  
Email: lnurre@charter.net

## CITY OF ESCONDIDO

Mr. Mike Lowry, Fire Chief  
Escondido Fire Department  
Phone: (760) 839-5402  
Email: mlowry@escondido.org

Ms. Joyce Masterson, Project Manager  
City of Escondido  
Phone: (760) 839-4621  
Email: jmasterson@escondido.org

## FREMONT FIRE DEPARTMENT

Mr. Mike Avila, Fire Captain  
Fremont Fire Department  
Phone: (925) 683-1802  
Email: mavila1727@yahoo.com

## POWAY FIRE DEPARTMENT

Mr. Jon Canavan, Division Chief  
Poway Fire Department  
Phone: (858) 668-4485  
Email: jcanavan@ci.poway.ca.us

## CITY OF FONTANA

Mr. Noel Castillo, Senior Engineer  
City of Fontana  
Phone: (909) 350-7632  
Email: ncastillo@fontana.org

Mr. Richard Oaxaca, Assistant Engineer  
City of Fontana  
Phone: (909) 350-7600  
Email: roaxaca@fontana.org

## SAN BERNARDINO COUNTY FIRE

Mr. Terry Welsh, Division Chief (R)  
San Bernardino County Fire Department  
Phone: (760) 954-7779  
Email: tnkwelsh@verizon.net

Mr. Rick McClintock, Battalion Chief (R)  
San Bernardino County Fire Department  
Phone: (919) 518-7914  
Email: rmccclintock@sbcfire.org

## CITY OF CARLSBAD

Mr. Terry L. Smith, Senior Civil Engineer  
City of Carlsbad  
Phone: (760) 602-2720  
Email: terry.smith@carlsbadca.gov

## CITY OF HESPERIA

Mr. David R. Burkett, Project Manager  
City of Hesperia  
Phone: (760) 947-1202  
Email: dburkett@cityofhesperia.us

Mr. Scott Priestester, Development Director  
City of Hesperia  
Phone: (760) 947-1901  
Email: spriester@cityofhesperia.us

## COUNTY OF RIVERSIDE

Ms. Anna E. Rodriguez, Project Manager  
County of Riverside, EDA  
Phone: (760) 863-2537  
Email: aarodriguez@rivcoeda.org

Ms. Leah Rodriguez, Project Manager  
County of Riverside, EDA  
Phone: (760) 863-2534  
Email: lmrodriguez@rivcoeda.org

## CITY OF CHINO

Mr. Michael A. Kolling, Project Manager  
City of Chino  
Phone: (909) 464-0768  
Email: mkolling@cityofchino.org

## CITY OF PASADENA

Mr. Dale Torstenbo, Project Manager  
City of Pasadena  
Phone: (626) 744-3971  
Email: dtorstenbo@cityofpasadena.net

## NORTH COUNTY FIRE PROTECTION DISTRICT

Mr. Steve Marovich, Battalion Commander  
North County Fire Protection District  
Phone: (760) 497-2215  
Email: smarovich@ncfire.org

## ONTARIO FIRE DEPARTMENT

Mr. Jim Schiller, Battalion Chief  
Ontario Fire Department  
Phone: (760) 954-8635  
Email: jschille@ci.ontario.ca.us

Mr. Michael Pelletier, Deputy Chief  
Ontario Fire Department  
Phone: (909) 229-3333  
Email: mpelleti@ci.ontario.ca.us

## CARLSBAD FIRE DEPARTMENT

Mr. Mike Lopez, Battalion Chief  
Carlsbad Fire Department  
Phone: (760) 212-2569  
Email: mike.lopez@carlsbadca.gov

Mr. Chris Lawrence, Captain  
Carlsbad Fire Department  
Phone: (760) 415-4679  
Email: christopher.lawrence@carlsbadca.gov

## NEWPORT BEACH

Mr. Jim Boland, Captain  
Newport Beach Fire Department  
Phone: (714) 915-4896  
Email: jboland@nbfd.net

Mr. Mark Vukojevic, Public Works Director  
City of Newport Beach  
Phone: (949) 644-3319  
Email: mvukojevic@newportbeachca.gov

## COSTA MESA

Mr. Tim Vasin,  
Costa Mesa Fire Department  
Phone: (714) 754-5204  
Email: timothy.vasin@costamesaca.gov

## CITY OF ANAHEIM

Mr. Jeff Alario, Deputy Chief  
Anaheim Fire & Police  
Phone: (714) 240-3419  
Email: jalamo@anaheim.net

Mr. Richard Aguirre, Project Manager  
City of Anaheim  
Phone: (714) 765-5052  
Email: raguirre@anaheim.net

## UNIVERSITY OF SOUTHERN CALIFORNIA

Mr. Joe McIntyre, Executive Director  
USC  
Phone: (213) 905-2629  
Email: jmcinty@usc.edu

## CITY OF LOS ANGELES

Mr. Allan Kawaguchi, Bond Program Manager  
City of Los Angeles  
Phone: (213) 580-9917  
Email: Allan.Kawaguchi@lacity.org

Mr. Curt Klaffa, Battalion Chief  
Los Angeles Fire Department  
Phone: (213) 216-4099  
Email: curt.klaffa@lacity.org

## CONTRACTORS

Mr. Nathan Complin, Project Manager  
Erickson-Hall Construction Co.  
Phone: (760) 801-4284  
Email: ncomplin@ericksonhall.com

Mr. Robert Kelley  
Keeton Construction  
Phone: (951) 970-0776  
Email: robert@keetonconstruction.com

Ms. Yvonne Burkhart, Project Manager  
Patterson Builders  
Phone: (714) 336-9411  
Email: yvonne@pattersonbuilders.com

## CAL STATE UNIVERSITY, SAN MARCOS

Mr. Brad Fenton, Director  
CSUSM Planning, Design, Construction  
Phone: (760) 750-4659  
Email: bfenton@csusm.edu

Steve Watters, Project Manager  
CSUSM Planning, Design, Construction  
Phone: (760) 750-4659  
Email: swatters@csusm.edu

## WARNER BROS. STUDIOS

Mr. Richard Gallagher, Fire Chief  
Warner Bros. Studios  
Phone: (818) 954-5640  
Email: richard.gallagher@warnerbros.com



# NORTH COUNTY FIRE PROTECTION DISTRICT

[www.ncfireprotectiondistrict.org](http://www.ncfireprotectiondistrict.org)

330 S. Main Avenue

Fallbrook, California 92028-2938

Phone: (760) 723-2005

Fax: (760) 723-2072

## BOARD OF DIRECTORS

RUTH HARRIS  
WAYNE HOOPER  
KENNETH E. MUNSON  
PAUL SCHADEN  
KATHLEEN THUNER

WILLIAM R. METCALF - Fire Chief/CEO  
[wmetcalf@ncfire.org](mailto:wmetcalf@ncfire.org)  
ROBERT H. JAMES - Counsel  
LOREN A. STEPHEN-PORTER - Board Secretary  
[lstephen@ncfire.org](mailto:lstephen@ncfire.org)

May 28, 2015

To Whom It May Concern:

In 2010, the North County Fire Protection District embarked upon building a new fire station for the first time in 35 years. As a protection district with limited funds, the fire department depends upon paid professionals to assist in unique projects of this type. One of the key components the fire department identified was selecting a strong architect who would assist us in the entire process. After a thorough review of many firms, the fire department selected WLC Architects and the journey began.

The fire department then began the extremely long process of receiving county approval, which in itself was an enormous feat but with the help of WLC, and a few years later, the construction began. WLC assisted in prequalifying contractors, which helped tremendously in streamlining the time frame. WLC Architects was very professional and possesses all the necessary resources to handle the complicated San Diego County procedures. The fire station plan fulfilled not only all our wants and needs, but also surpassed our expectations.

I took over as the project manager for the last two years of the construction process. WLC Architects designed a station that allowed me to keep us completely on budget. WLC and their consultant team answered any and all questions that came up. My job was quite easy thanks to them. During the walk through process, each member of WLC's team spent countless hours keeping the contractor on track to complete the project according to the specifications.

The one person who stood out over everyone else was Kelley Needham, the project architect. Three things are worth mentioning about Kelley. First of all, Kelley is not only a professional but also a true advocate for the fire department. Kelley was the one person I could count on for advice and most uniquely, he was available 24/7. He took the time as if it was his own station! Second, Kelley's knowledge, skills, and abilities are unmatched. Kelley assisted me throughout the process and knew every aspect of the project. Last, but definitely not least, is Kelley's attention to detail. Every meeting was thoroughly documented. This information proved invaluable as the project was closed out with the contractor. Kelley's attention to detail throughout the final walk through was extremely valuable.

The overall process to construct North County Fire Protection District's Station No. 5 took over 5 years. It was a long process with San Diego County and was very labor intensive. The true silver lining in the process was WLC Architects, Kelley Needham, and all the consultants who made the construction of our fire station a complete success. For all these reasons, I highly recommend their services for your future needs. Please feel free to contact me with any questions.

Regards,



Steven Marovich



PROUDLY SERVING THE COMMUNITIES OF FALLBROOK, BONSALE AND RAINBOW



August 6, 2015

Re: Letter of Recommendation  
WLC Architects, Inc.

In the fall of 2011, the University of Southern California found itself in the unusual position of having to build a replacement for Fire Station 15 in the City of Los Angeles. After receiving recommendations from various agencies, including both the City of Los Angeles and the Los Angeles Fire Department, we retained WLC Architects. The project was extremely complex. In addition to our own design requirements, the requirements of the various city agencies, as well as those of the fire department, had to be constantly addressed and incorporated. To make matters worse, the project had a shortened timeframe, and the schedule of a much larger university project depended heavily on the completion of the station. WLC's knowledge, experience, and ability to manage multiple client interests were instrumental in making the project successful. They were always responsive and never lost sight of the best interests of the project and the University. They are a unique combination of professionalism and common sense.

In summary, I would not hesitate to recommend WLC Architects and I look forward to the opportunity to work with them in the future.

Sincerely,

JOE McINTYRE  
Program Director Capital Construction Development  
University of Southern California



# ORANGE COUNTY FIRE AUTHORITY

P.O. Box 57115, Irvine, CA 92619-7115 • 1 Fire Authority Road, Irvine, CA 92602

Jeff Bowman, Fire Chief

(714) 573-6000

[www.ocfa.org](http://www.ocfa.org)

August 20, 2015

WLC Architects  
8163 Rochester Avenue  
Suite 100  
Rancho Cucamonga, CA 91730  
Attn: Kelley Needham

Re: Orange County Fire Station 56, Sendero Ranch

Dear Kelly:

This letter is sent to express my sincere appreciation for the effort and results provided by your team in the design and construction of Orange County Fire Station 56, Sendero Ranch. The station is beautiful. You captured the design motif of the Sendero Master Plan Community perfectly. You captured all of the elements important for a safe, functional, durable facility. It is clear that you and your firm have an appreciation for the many nuance elements of fire station design that can only be mastered by extensive experience. WLC is clearly a master of the "niche" market of fire station design. That the station was designed and constructed on time and within budget is a credit to the quality of your work. It is the finest station we have built to date. It was a pleasure working with your team and I especially appreciate the central role you as a Principal took in our project from project award through the grand opening. Please feel free to offer me as a reference should the opportunity arise. Thank you and I hope we have an opportunity to combine in future projects.

Sincerely,

A handwritten signature in black ink, appearing to read "Steve Chambers".

Steve Chambers  
Property Manager  
Orange County Fire Authority

Serving the Cities of: Aliso Viejo • Buena Park • Cypress • Dana Point • Irvine • Laguna Hills • Laguna Niguel • Laguna Woods • Lake Forest • La Palma  
Los Alamitos • Mission Viejo • Placentia • Rancho Santa Margarita • San Clemente • San Juan Capistrano • Santa Ana • Seal Beach • Stanton • Tustin • Villa Park  
Westminster • Yorba Linda • and Unincorporated Areas of Orange County

**RESIDENTIAL SPRINKLERS AND SMOKE ALARMS SAVE LIVES**



DENNIS R. YATES  
Mayor

EUNICE M. ULLOA  
Mayor Pro Tem



GLENN DUNCAN  
EARL C. ELROD  
TOM HAUGHEY  
Council Members

MATTHEW C. BALLANTYNE  
City Manager

## CITY of CHINO

July 9, 2015

Subject: Letter of Recommendation – WLC Architects – Fire Facility Development

To Whom It May Concern,

Over the years, WLC Architects have completed a wide range of fire facility development projects for the City of Chino and the Chino Valley Fire District. The projects range from master plan designs for proposed facilities to the upgrading of existing facilities, as well as the development of new fire facilities for the City's Fire District. Within the last ten years, WLC Architects have completed the design and construction of Chino Valley Fire District's Fire Station No. 61, including a new Training Center and Drill Tower, Fire Station No. 63, and Fire Station No. 67. The facilities were designed to fit into the surrounding community, meet LEED Silver Certification design standards, reduce energy costs, and minimize Fire District operation and maintenance costs. The completed facilities have received numerous design awards and have been very well received by the Fire District staff, as well as the community.

Any design firm is only as good as the competency of their staff. As a Principal in the firm, Kelley Needham has personally managed each project, ensuring the highest level of customer service is provided to the City. Kelley and his staff's attention to detail has resulted in every project being completed within the project timeframe, and always well within budget. Regardless of the size and/or complexity of the project, WLC has always provided exceptionally competent staff to develop and manage every aspect of the project. WLC's attention to every aspect of the project development and customer service has been demonstrated repeatedly over the years, and is greatly appreciated.

In summary, I would not hesitate in recommending WLC Architects for any type of fire facility related project, and look forward to the opportunity to continue to work with WLC Architects on future projects.

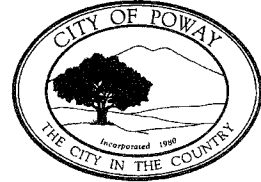
Sincerely,

  
Michael A. Kolling  
Capital Projects Manager, RLA  
City of Chino  
Public Works Engineering Department



# CITY OF POWAY

STEVE VAUS, Mayor  
DAVE GROSCH, Deputy Mayor  
JIM CUNNINGHAM, Councilmember  
BARRY LEONARD, Councilmember  
JOHN MULLIN, Councilmember



July 22, 2015

To Whom It May Concern:

Over the years, I have worked with Kelley Needham and the WLC Architects' studio team on the design of three fire-related projects including one fire station and two fire training tower facilities. The most rewarding of these projects was leading the development of the City of Poway's Fire Training Tower project from design through construction. The \$3.6M project presented several challenges and opportunities for the City of Poway Fire Department and which required an architectural firm that was experienced, open-minded, responsive and team-centric. WLC Architects exceeded each of these requirements resulting in a state-of-the-art facility that met the Fire Department's needs, the City's vision, and the community's wishes, all the while staying within program boundaries and capacities.

Design, construction, financing and the purpose of publicly-funded facilities are increasingly evaluated by elected officials and their constituents to determine need and priority. WLC Architects understood this when selected by the City of Poway to design a new, replacement fire training tower facility that met today's firefighter training needs, using public funding. Most importantly, they delivered on an opportunity to invest in a community with a purpose-focused, environmentally conscious, sustainable infrastructure.

Kelley and his talented team are a pleasure to work with. They are quick to respond and research, pay close attention to details and demonstrate the unique ability to balance client desire with incredible design and creativity. Throughout the process, their team ensured that our team had all the information necessary to make critical project decisions from design through construction.

Kelley Needham and the WLC Architects studio team should be at the top of every client's list.

Sincerely,

A handwritten signature in black ink, appearing to be "JC" followed by a horizontal line.

Jon Canavan  
Division Chief  
Department of Safety Services

City Hall Located at 13325 Civic Center Drive  
Mailing Address: P.O. Box 789, Poway, California 92074-0789  
[www.poway.org](http://www.poway.org)



April 1, 2014

Kelley Needham  
WLC Architects  
8163 Rochester Avenue, Suite 100  
Rancho Cucamonga, CA 91730

**RE: Letter of Reference**

To Whom It May Concern:

WLC Architects has provided architectural and construction administrative services to the City of San Marcos for a variety of projects over the past 16 years. During this time, WLC was retained for the design of three fire stations, one sheriff's facility, a police station, and a regional emergency services training facility. Our most recent project with them, Fire Station 4, received a LEED rating of Gold, which was directly attributed to WLC Architects' vast experience and knowledge in building design and LEED planning. All of the above projects were delivered at or under budget and with minimal change orders.

Mr. Needham and his staff are extremely professional, have outstanding customer service, and provide a product and service of the highest quality. They are very adept at managing complex projects and have extensive resources at their disposal to get a project completed successfully. Having worked with various architects over the years, I believe WLC is sensitive to the needs and desires of their client while at the same time providing sound direction to assure a successful project.

I highly recommend WLC Architects for any agency's architectural needs. If you should have any questions or need additional information, please do not hesitate to contact me.

Sincerely,

A handwritten signature in black ink, appearing to read "Todd Newman", with a long horizontal flourish extending to the right.

Todd Newman  
Fire Chief



Joyce Masterson  
Director of Economic Development and  
Community Relations  
201 North Broadway, Escondido, CA 92025  
Phone: 760-839-4621 Fax: 760-739-7003

September 25, 2013

To Whom It May Concern:

I am pleased to write this letter of recommendation for WLC Architects.

The City of Escondido engaged the services of WLC Architects to design the 116,000 square foot joint Police and Fire Headquarters, a three-story building with ample public and employee parking. It provides operational and administrative space for the following functions: Police patrol, investigations, juvenile crime, domestic violence, community-oriented policing, communications and 911 emergency response services, crime lab, computer-aided dispatch center, emergency operations center, short-term custody of prisoners, and community meeting space. The Fire Department area includes administrative and training spaces, fire prevention services, paramedic services management, and community education areas. The building opened in May 2010.

Thanks to WLC's creativity and professionalism, Escondido now enjoys a striking state-of-the-art facility that is functional yet comfortable. They provided excellent service and guidance throughout the project from the planning phase right through to the grand opening. They were always patient, flexible, and sensitive to our unique needs, including budget constraints.

It was a pleasure to work with WLC and I highly recommend them.

Sincerely,

A handwritten signature in blue ink that reads "Joyce Masterson".

Joyce Masterson  
Director of Economic Development and Community Relations

Sam Abed, Mayor

Olga Diaz, Deputy Mayor

Ed Gallo

Michael Morasco

John Masson



CITY OF STANTON FIRE STATION  
ORANGE COUNTY FIRE AUTHORITY NO. 46

7871

7871

NO PARKING  
FIRE DEPARTMENT USE ONLY  
7871

NO ENTRY





# WLC

## WLC Architects, Inc.

### SOUTHERN CALIFORNIA

8163 Rochester Ave., Suite 100  
Rancho Cucamonga, CA, 91730  
909.987.0909

### SACRAMENTO

1110 Iron Point Road, Suite 200  
Folsom, CA 95630  
916.355.9922

### BAY AREA

2600 Tenth Street, Suite 500  
Berkeley, CA 94710  
510.450.1999

### SAN DIEGO

1917 Palomar Oaks Way, Suite 110  
Carlsbad, CA 92008  
760.700.0908