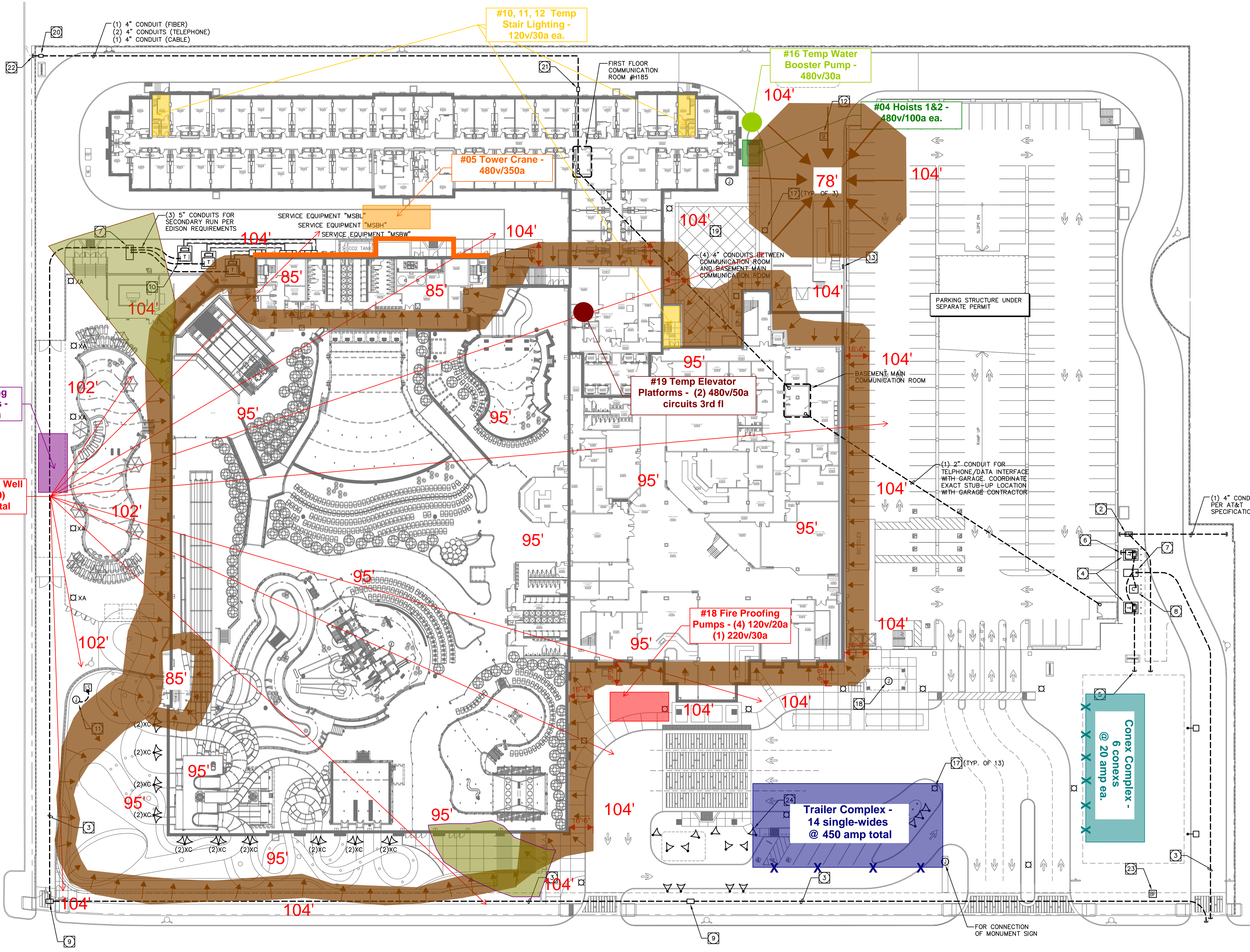


- KEYNOTES:**
- (1) 4" CONDUIT FOR TELEPHONE/DATA SERVICE TO PARKING GARAGE AND RESTAURANT PAD PER AT&T SPECIFICATIONS.
 - 3'-0" X 5'-0" CONCRETE PULL BOX PER AT&T SPECIFICATIONS.
 - (2) 5" CONDUIT FOR PRIMARY FEED PER EDISON SPECIFICATIONS.
 - PROVIDE 8'-0" X 10'-0" TRANSFORMER SLAB WITH BOX BELOW PER EDISON SPECIFICATIONS.
 - STUB (3) 4" CONDUIT TO WITHIN 5 FEET OF RESTAURANT PAD FOR EXTENSION BY RESTAURANT CONTRACTOR.
 - STUB (2) 4" CONDUIT TO WITHIN 5 FEET OF PARKING STRUCTURE FOR EXTENSION BY PARKING GARAGE CONTRACTOR.
 - 5'-0" X 10'-0" SWITCHPAD PER EDISON SPECIFICATIONS. MAINTAIN A MINIMUM OF 6'-0" BETWEEN SWITCHPAD AND TRANSFORMER PAD. PROVIDE (1) 5" CONDUIT PER EDISON SPECIFICATION BETWEEN SWITCHPAD AND TRANSFORMERS AND BETWEEN SWITCHPAD AND CAPACITOR PAD.
 - PROVIDE 6'-0" X 6'-0" CAPACITOR PAD PER EDISON SPECIFICATIONS.
 - PROVIDE 3'-0" X 5'-0" CONCRETE MANHOLE PER EDISON SPECIFICATIONS.
 - PROVIDE 10'-0" X 12'-0" TRANSFORMER SLAB WITH BOX BELOW PER EDISON SPECIFICATIONS.
 - PROVIDE EMERGENCY 480V FEEDER TO SEWAGE LIFT STATION FROM ELECTRIC ROOM W019.
 - PROVIDE EMERGENCY 480V FEEDER TO SEWAGE EJECTOR PUMP FROM ELECTRIC ROOM H184.
 - PROVIDE 100A, 480V FEEDER FROM ELECTRIC ROOM H005 FOR COMPACTOR AND BAILER CONTROL PANEL.
 - PROVIDE 150W METAL HALIDE, TYPE III DISTRIBUTION SHOE BOX TYPE FIXTURE MOUNTED ON A 15'-0" HIGH STEEL POLE.
 - PROVIDE 150W METAL HALIDE, TYPE IV DISTRIBUTION SHOE BOX TYPE FIXTURE MOUNTED ON A 15'-0" HIGH STEEL POLE.
 - PROVIDE 150W METAL HALIDE, TYPE III DISTRIBUTION SHOE BOX TYPE FIXTURE MOUNTED ON A 20'-0" HIGH STEEL POLE.
 - PROVIDE 150W METAL HALIDE AREA LIGHTING FIXTURE EQUAL TO STERNBERG #1521F-CFG-ROSH MOUNTED ON A 15' HIGH SQUARE WOOD POLE #PH1-15-PV-S-46-BKT.
 - PROVIDE 120V CIRCUIT FOR CONNECTION OF LIGHTING AT BUS STOP. PROVIDE FOR CONNECTION OF THREE VANDAL RESISTANT EQUAL TO KENALL #MLH12-46-T-MW-CP-2-32-EB/1.
 - PROVIDE ALLOWANCE FOR SPECIALTY LIGHTING AND POWER AT WEDDING LAWN.
 - PROVIDE 3'-0" X 2'-0" CONCRETE PULL BOX WITH TRAFFIC RATED COVER PER AT&T SPECIFICATIONS.
 - PROVIDE 3'-0" X 2'-0" CONCRETE PULL BOX WITH CONCRETE COVER PER AT&T SPECIFICATIONS.
 - STUB CONDUIT UNDER NEW WALL AND CAP PRIOR TO PROPERTY LINE FOR EXTENSION TO POLE BY AT&T.
 - PROVIDE A 208V-1Ø CONNECTION TO IRRIGATION PUMP SYSTEM. VERIFY EXACT LOCATION.
 - CONTRACTOR TO PROVIDE A \$500.00 ALLOWANCE PER FIXTURE FOR FLOOD LIGHTING FIXTURES TO ILLUMINATE THE WOLF ROCK SCULPTURE.

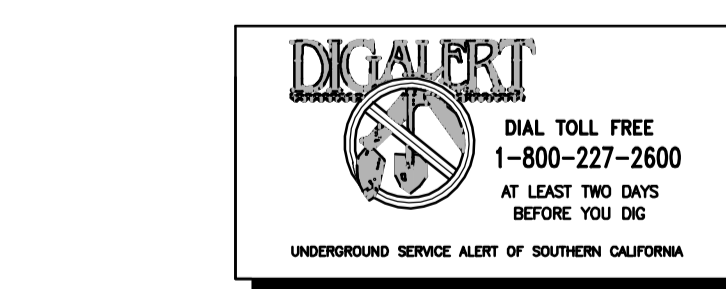


Temp Power Logistics Plan

12/6/13

1 OVERALL ELECTRICAL SITE PLAN
E1.0 SCALE: 1" = 30'-0"

CONTRACTOR TO PROVIDE AN ALLOWANCE OF \$30,000 FOR ADDITIONAL BUILDING MOUNTED LIGHTING NOT INDICATED IN PLANS.



UTILITY CONTACTS

ELECTRIC: SOUTHERN CALIFORNIA EDISON DANNY DAVISSON 1241 SOUTH GRAND AVENUE SANTA ANA, CA 92705 PHONE: (714) 973-5455	TELEPHONE: AT & T: STEVE BESNEATTE 3939 E. CORONADO STREET ANAHEIM, CA 92807 (714) 237-6075
--	--

NOTE: ALL UTILITY INFORMATION SHOWN IS PRELIMINARY - CONTRACTOR IS TO VERIFY ALL PROVISIONS, P.O.C. LOCATION, CONDUIT ONLY INFRASTRUCTURE, SPECS, ETC. PRIOR TO BID & PRIOR TO ANY COMMENCEMENT OF WORK WITH UTILITY COMPANY DRAWINGS AND REPRESENTATIVE.

ELECTRICAL SITE PLAN

DATE	REVISIONS	DATE	REVISIONS
08-23-2013	DESIGN BASE PROGRESS SET		
09-23-2013	PHASE I GMP		
12-06-2013	ADDENDUM E		

PA / PM: M. GILCHRIST
DRAWN BY: D. CAIN
JOB NO.: IVR10-0065-02

SHEET
E1.0