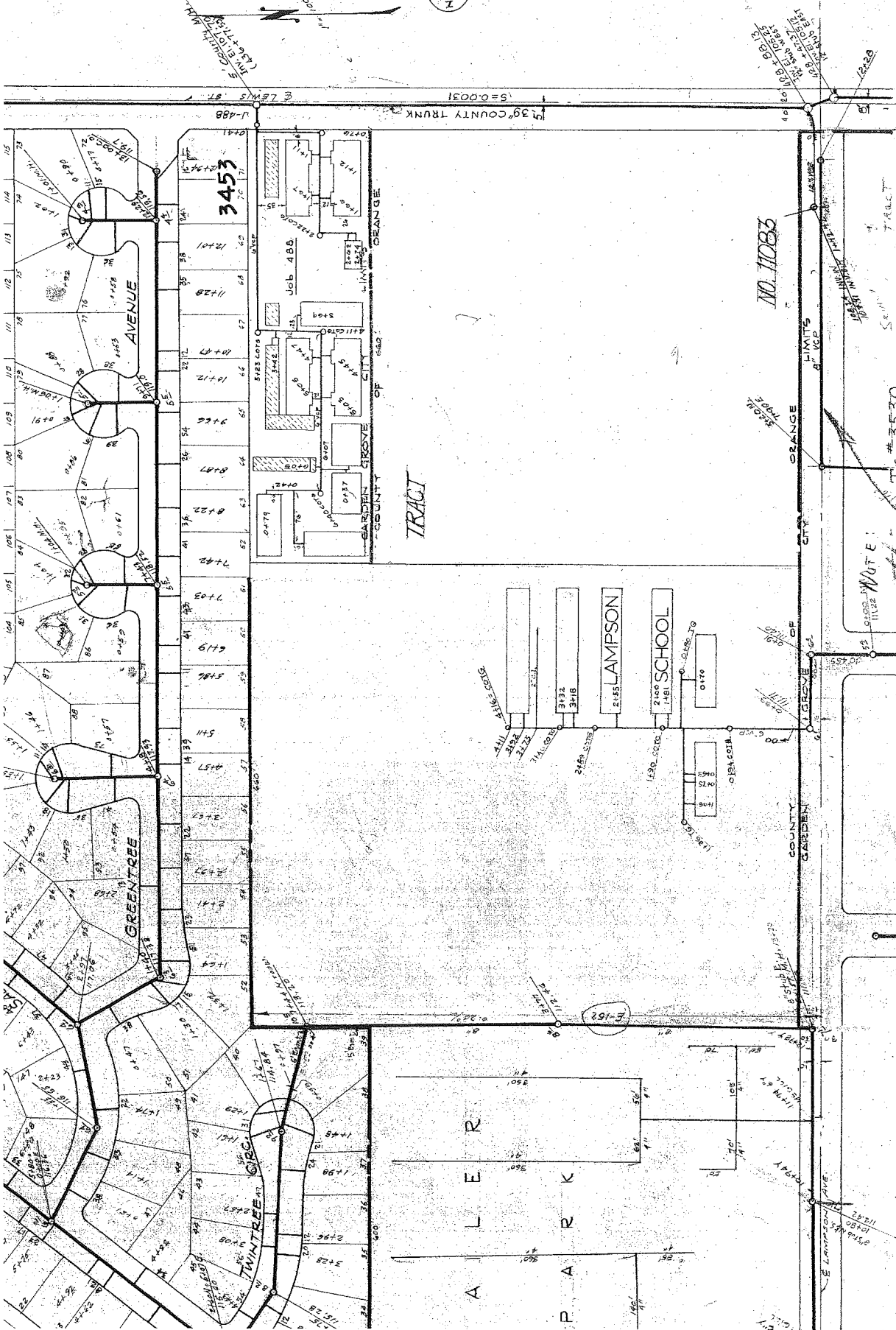


1819



3453

Job 488

LAMPSON

SCHOOL

NO. 11083

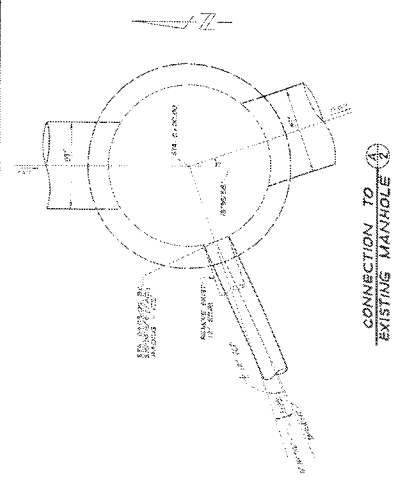
Tr. #3530

NOTE:
Home on
south of Q

A L E R

P A R K

NAKER



WATER SYSTEM CONSTRUCTION NOTES:

ITEM	DESCRIPTION OF WORK	QUANTITY	UNIT
1.	CONST. 8" V.C.P. CLASS 150	2078	L.F.
2.	CONST. VULCANIZED FIBRE REINFORCED PLASTIC PER CITY OF GARDEN GROVE STD. PLAN B-710. APPROX 6' WALK.	7	EA.
3.	8" HD HD G.C. W/ ANCHOR BLDG PER STD. PLAN B-710.	9	EA.
4.	8" HD HD G.C. W/ ANCHOR BLDG PER STD. PLAN B-710.	9	EA.
5.	8" CAST IRON MANHOLE PER STD. PLAN B-710.	4	EA.
6.	CONST. 4" POLYETHYLENE GLASS FIBRE REINFORCED PLASTIC PER CITY OF GARDEN GROVE STD. PLAN B-710.	9	EA.
7.	CONST. 4" POLYETHYLENE GLASS FIBRE REINFORCED PLASTIC PER STD. PLAN B-710.	3	EA.
8.	CONST. 4" POLYETHYLENE GLASS FIBRE REINFORCED PLASTIC PER STD. PLAN B-710.	7	EA.
9.	CONST. 4" POLYETHYLENE GLASS FIBRE REINFORCED PLASTIC PER STD. PLAN B-710.	7	EA.
10.	CONST. 4" POLYETHYLENE GLASS FIBRE REINFORCED PLASTIC PER STD. PLAN B-710.	4	EA.
11.	CONST. 4" POLYETHYLENE GLASS FIBRE REINFORCED PLASTIC PER STD. PLAN B-710.	6	EA.
12.	CONST. 4" POLYETHYLENE GLASS FIBRE REINFORCED PLASTIC PER STD. PLAN B-710.	12	EA.

SANITARY SEWER CONSTRUCTION NOTES:

ITEM	DESCRIPTION OF WORK	QUANTITY
20.	CONST. 4" V.C.P. LATERAL	819
21.	CONST. 8" V.C.P.	475
22.	CONST. 8" V.C.P.	2,855
23.	CONST. CLEANOUT PER CITY OF GARDEN GROVE STD. PLAN B-710.	5
24.	CONST. CLEANOUT PER CITY OF GARDEN GROVE STD. PLAN B-710.	3
25.	CONST. MANHOLE PER GARDEN GROVE SANITARY DISTRICT STD. PLAN B-710.	1
26.	CONST. MANHOLE PER GARDEN GROVE SANITARY DISTRICT STD. PLAN B-710.	100
27.	CONST. MANHOLE PER GARDEN GROVE SANITARY DISTRICT STD. PLAN B-710.	1

NOTE: ANY WORK NOT COVERED BY THE CONSTRUCTION NOTES ON SHEET 1 SHALL BE INSTALLED PER THE CITY SPECIFICATIONS FOR THE GARDEN GROVE CODE.

WATER SYSTEM CONSTRUCTION NOTES: PHASING

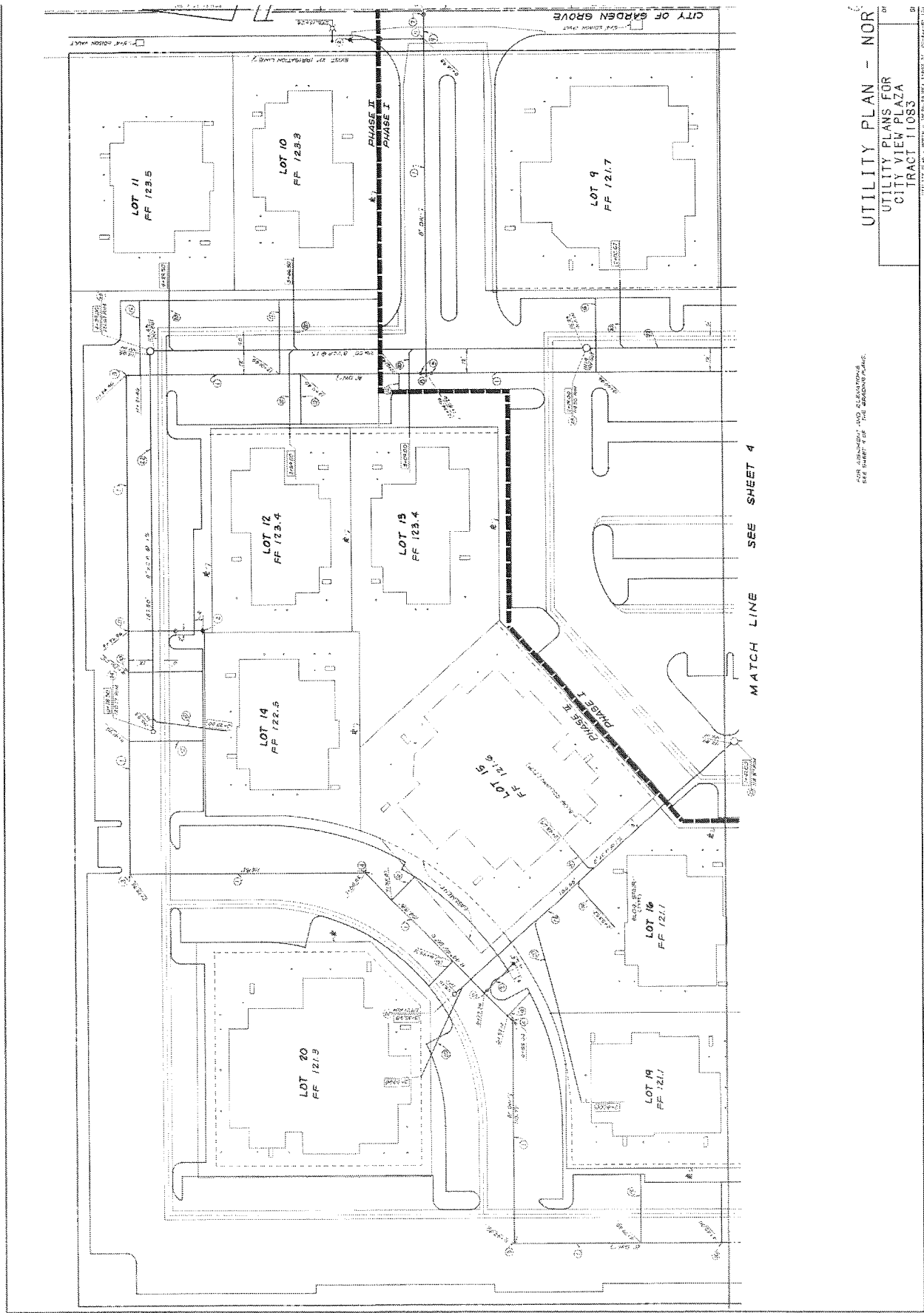
ITEM	DESCRIPTION OF WORK	PHASE 1	PHASE 2
1.	CONST. 8" V.C.P. CLASS 150	2078 L.F.	2078 L.F.
2.	CONST. VULCANIZED FIBRE REINFORCED PLASTIC PER CITY OF GARDEN GROVE STD. PLAN B-710. APPROX 6' WALK.	7 EA.	7 EA.
3.	8" HD HD G.C. W/ ANCHOR BLDG PER STD. PLAN B-710.	2 EA.	2 EA.
4.	8" HD HD G.C. W/ ANCHOR BLDG PER STD. PLAN B-710.	2 EA.	2 EA.
5.	8" CAST IRON MANHOLE PER STD. PLAN B-710.	4 EA.	4 EA.
6.	CONST. 4" POLYETHYLENE GLASS FIBRE REINFORCED PLASTIC PER CITY OF GARDEN GROVE STD. PLAN B-710.	9 EA.	9 EA.
7.	CONST. 4" POLYETHYLENE GLASS FIBRE REINFORCED PLASTIC PER STD. PLAN B-710.	3 EA.	3 EA.
8.	CONST. 4" POLYETHYLENE GLASS FIBRE REINFORCED PLASTIC PER STD. PLAN B-710.	7 EA.	7 EA.
9.	CONST. 4" POLYETHYLENE GLASS FIBRE REINFORCED PLASTIC PER STD. PLAN B-710.	7 EA.	7 EA.
10.	CONST. 4" POLYETHYLENE GLASS FIBRE REINFORCED PLASTIC PER STD. PLAN B-710.	4 EA.	4 EA.
11.	CONST. 4" POLYETHYLENE GLASS FIBRE REINFORCED PLASTIC PER STD. PLAN B-710.	6 EA.	6 EA.
12.	CONST. 4" POLYETHYLENE GLASS FIBRE REINFORCED PLASTIC PER STD. PLAN B-710.	12 EA.	12 EA.

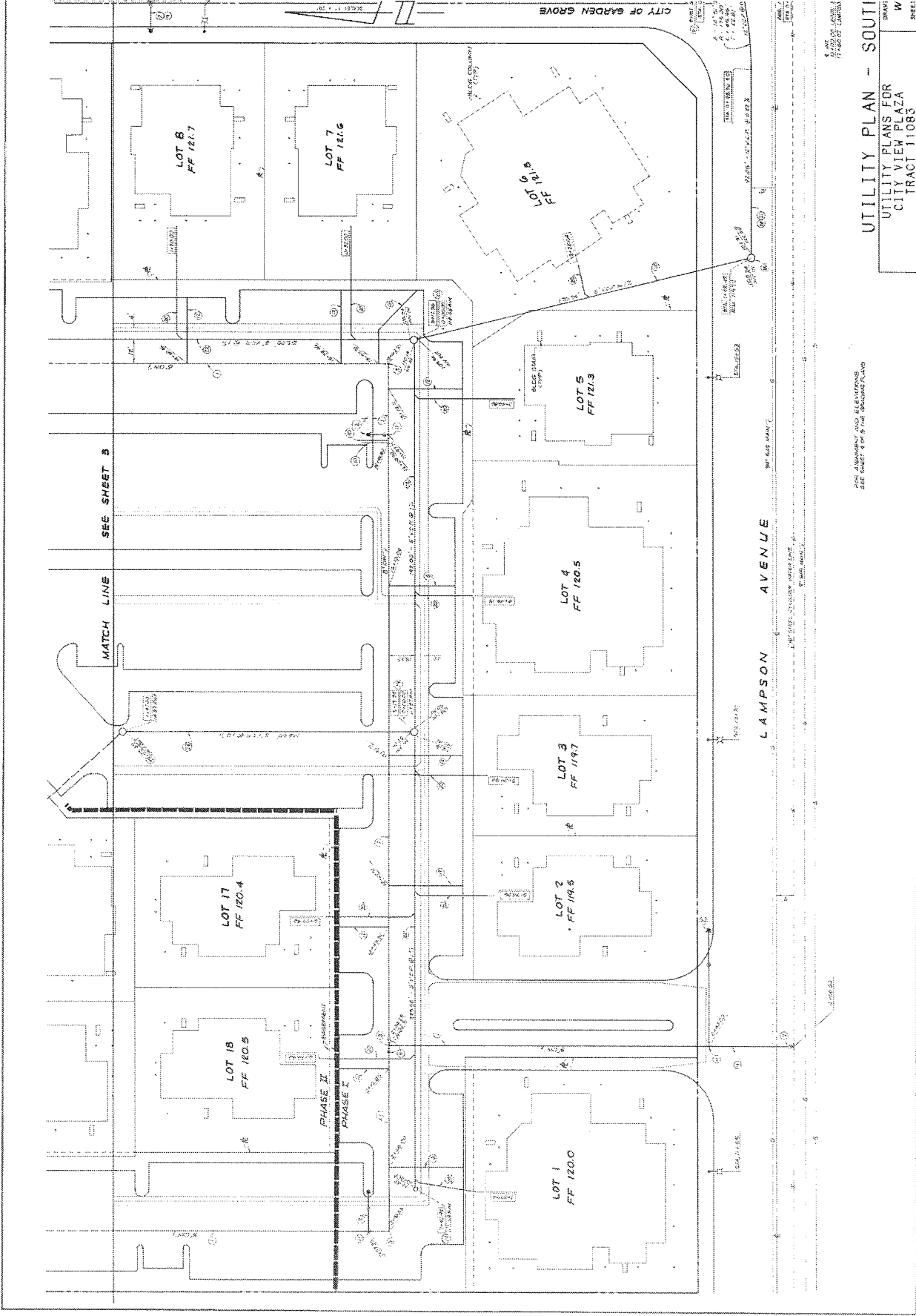
SANITARY SEWER CONSTRUCTION NOTES:

ITEM	DESCRIPTION OF WORK	PHASE 1	PHASE 2
20.	CONST. 4" V.C.P. LATERAL	819 L.F.	819 L.F.
21.	CONST. 8" V.C.P.	475 L.F.	475 L.F.
22.	CONST. 8" V.C.P.	2,855 L.F.	2,855 L.F.
23.	CONST. CLEANOUT PER CITY OF GARDEN GROVE STD. PLAN B-710.	5	5
24.	CONST. CLEANOUT PER CITY OF GARDEN GROVE STD. PLAN B-710.	3	3
25.	CONST. MANHOLE PER GARDEN GROVE SANITARY DISTRICT STD. PLAN B-710.	1	1
26.	CONST. MANHOLE PER GARDEN GROVE SANITARY DISTRICT STD. PLAN B-710.	100	100
27.	CONST. MANHOLE PER GARDEN GROVE SANITARY DISTRICT STD. PLAN B-710.	1	1

UTILITY PLANS FOR
CITY VIEW PLAZA
TRACT 11083

DATE: 05/02/05 11:11 AM





FOR ALIGNMENT AND ELEVATIONS
SEE SHEET 4 OF 5 FOR FOUNDATION

UTILITY PLAN - SOUTH
 UTILITY PLANS FOR
 CITY VIEW PLAZA
 TRACT 11083

CITY PLAN - SOUTH - SHEET 4 OF 5